

Converting Colors

Decimal(5188888)

Have a look what the booklet for
Decimal(5188888) contains.

Decimal(5188888)	3
<i>Conversions</i>	4
<i>Details</i>	6
<i>Harmonies</i>	11
<i>Previews</i>	23
<i>Color Blindness Simulation</i>	26
<i>CSS Examples</i>	29

Color

Decimal(5188888)

Conversions

Conversions Part 1

Format	Color
Hex	4F2D18
RGB	79, 45, 24
RGB Percent	31%, 18%, 9%
CMY	0.6902, 0.8235, 0.9059
CMYK	0.00, 0.43, 0.70, 0.69
HSL	23°, 53%, 20%
HSV	23°, 70%, 31%
XYZ	4.3277, 3.6050, 1.3319
YIQ	52.7720, 27.0050, 0.6770

Conversions

Conversions Part 2

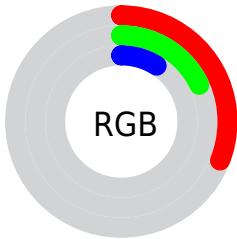
Format	Color
RYB	79, 58, 24
Decimal	5188888
CIELab	22.32, 13.37, 19.99
CIELCh	22, 24.047, 56.219
Yxy	3.6050, 0.4671, 0.3891
Android (android.graphics.Color)	4283378968 (0xFF4F2D18)
YUV	52.7720, -14.1846, 23.0020
Hunter-Lab	18.9868, 7.4590, 9.1317

Details

The Decimal color **5188888** is a dark color, and the websafe version is hex **663333**. A complement of this color would be **1587791**, and the grayscale version is **3487029**.

A 20% lighter version of the original color is **8608580**, and **2097152** is the 20% darker color. If you saturate the color by 10%, you get **5187600**, and if you desaturate by 10%, it is **5190176**.

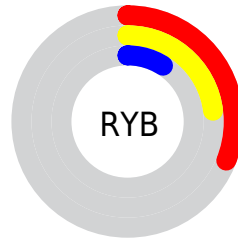
Distribution



Red (31%)

Green (18%)

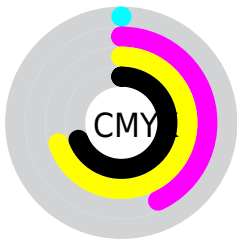
Blue (9%)



Red (31%)

Yellow (23%)

Blue (9%)

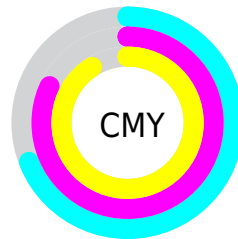


Cyan (0%)

Magenta (43%)

Yellow (70%)

Black (69%)



Cyan (69%)

Magenta (82%)

Yellow (91%)

Brightness & Saturation Gradients

These gradients show how the Decimal color 5188888 changes by changing the brightness by 10 percent. The first figure shows a shift by +10% for each color and the second figure -10%.

Similar to the brightness gradients but the following saturation gradients show a change of the Decimal color 5188888 by changing the saturation by 10% instead.

■ 5188888

■ 5188888

■ 16777212

■ 3610624

■ 8608580

■ 2097152

■ 10384475

■ 0

■ 12225908

■ 14067854

■ 15975336

■ 16768963

■ 16776415

■ 5188888

■ 5188888

■ 5187600

■ 5190176

■ 5186312

■ 5191464

■ 5185024

■ 5192752

■ 5194040

■ 5195072

■ 5196359

■ 5197647

■ 5198935

■ 5200223

Harmonies

Analogous

The Analogous color harmony consists of three colors that are next to each other on the color wheel.



5646119



5188888



4338704

Triad

The Triadic color harmony groups three colors that are evenly spaced from another and form a triangle on the color wheel.



5188888



15922



3355221

Complementary

The Complementary color scheme is a pair of colors which are on the opposite of each other on the color wheel.



5188888



1587791

Split Complementary

Split-complementary colors differ from the complementary color scheme. The scheme consists of three colors, the original color and two neighbors of the complement color.



604249



5188888



15941

Square

The Square scheme is like the rectangle color scheme, but the four colors are evenly spaced on the color wheel.



5188888



1719329



15443



4795209

Rectangle

The Rectangle color scheme consists of four colors that form a rectangle on the color wheel.



5188888



3553041



15443



2634840

Sweetspot

The Sweet Spot groups the original color and five complimentary colors.



5188888



6707537



5183547



3353382



11776947



3355443

Same Dimension

The Same Dimension uses a secret algorithm to generate beautiful new colors.



5188888



6697232



5195800



2499618



6694656



15095808

Inverse Universe

The Inverse Universe completely reimagines the original color for something new.



1587791



1066342



1580879



2237734



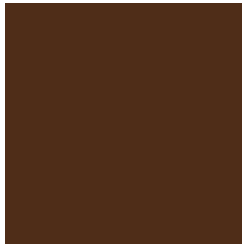
16230



36582

Previews

White Background



This preview shows how the Decimal color 5188888 looks on a white background.

Color Contrast Check

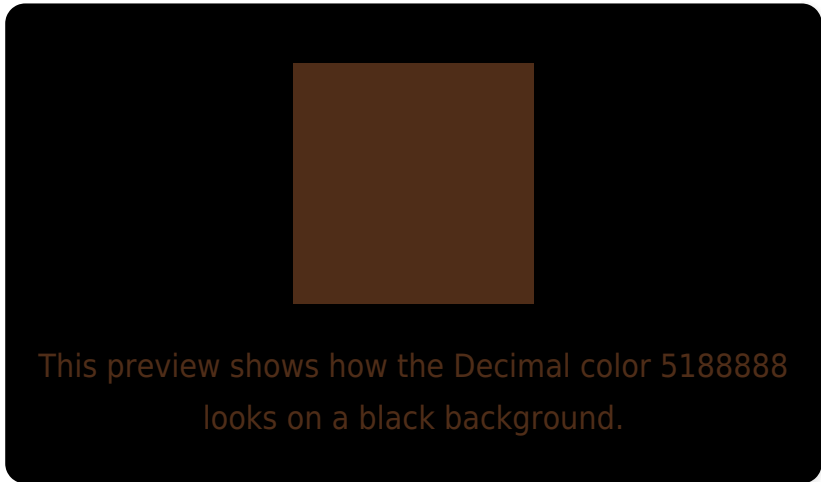
Large Text (above 18pt) WCAG AA ✓ Pass

Any Text WCAG AA ✓ Pass

Large Text (above 18pt) WCAG AAA ✓ Pass

Any Text WCAG AAA ✓ Pass

Black Background



Color Contrast Check

Large Text (above 18pt) WCAG AA × Fail

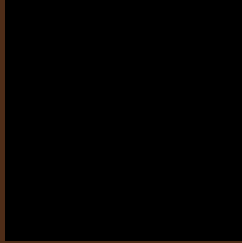
Any Text WCAG AA × Fail

Large Text (above 18pt) WCAG AAA × Fail

Any Text WCAG AAA × Fail

If you want to check with other color combinations, try the [Color Contrast Checker](#).

Decimal 5188888 Background



This preview shows how black text looks on a background with the Decimal color 5188888.

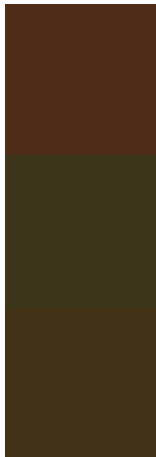


This preview shows how white text looks on a background with the Decimal color 5188888.

Color Blindness Simulation

Color vision deficiency is a very complex topic, and I could not describe the different causes any better than Wikipedia does, so if you want to learn more, you should check out their [article about color blindness](#).

Dichromacy

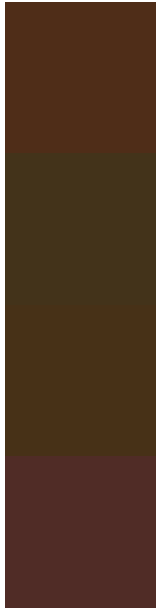


Original Color
5188888

Protanopia
3946011

Deuteranopia
4403990

Trichromacy



Original Color
5188888

Protanomaly
4403994

Deuteranomaly
4665623

Tritanomaly
5254182

Monochromacy



Original Color
5188888

Achromatopsia
3487029

Achromatomaly
4076074

CSS Examples

Text

The CSS property to change the color of the text to Decimal 5188888 is called "color". The color property can be set on classes, ids or directly on the HTML element.

This example shows how text in the color #4F2D18 looks like.

```
.text, #text, p{  
    color:#4F2D18  
}
```

If you want to add a text shadow in that color use the text-shadow property, you can generate a text shadow directly with our [CSS Text Shadow Generator](#).

Here you see how black text with a 4 pixel #4F2D18 colored shadow looks like.

```
.shadow{ text-shadow: 4px 4px 2px #4F2D18
}
```

Border

The CSS property to change the border of an element to Decimal 5188888 is called "border". The border property can be set on classes, ids or directly on the HTML element.

This example shows the color as border, it can be applied via the CSS property "border" or "border-color".

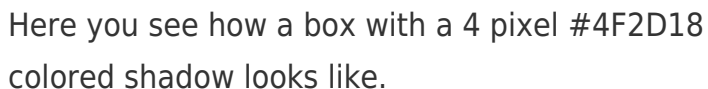
```
.border, #border, table{ border:4px solid
#4F2D18 }
```

If only the border color should be changed use the property `border-color`.

```
.border{ border-color:#4F2D18 }
```

If you want to add a box shadow in that color use:

Here you see how a box with a 4 pixel #4F2D18 colored shadow looks like.



```
.boxshadow{ -moz-box-shadow:4px 4px 4px  
4px #4F2D18; -webkit-box-shadow:4px 4px  
4px 4px #4F2D18; box-shadow:4px 4px 4px  
4px #4F2D18 }
```

Background

The CSS property to change the background color of an element to Decimal 5188888 is called "background". The background property can be set on classes, ids or directly on the HTML element.

```
.background, #background, body{  
background:#4F2D18 }
```

If only the background color should be changed can be used:

```
.background{ background-color:#4F2D18 }
```

This example shows the color as background, it is applied via the CSS property "background".

To optimize and compress your CSS code, you can use our [online CSS compressor and optimizer](#) based on csstidy. If you want to create a linear or radial gradient as background or border, check our [CSS Gradient Generator](#).

Hey! You found this booklet interesting? Support Converting Colors with the new Membership Option!

The pro membership hides all ads, plus gives you double the colors in the color bucket, and more awesome pro features!

[Learn more, Memberships starting at \\$2.50/m!](#)

**Follow me
on Twitter!**

@ConvertingColor