

# Converting Colors

Decimal(5190460)

Have a look what the booklet for  
Decimal(5190460) contains.

<b>Decimal(5190460)</b> .....	3
<i><b>Conversions</b></i> .....	4
<i><b>Details</b></i> .....	6
<i><b>Harmonies</b></i> .....	11
<i><b>Previews</b></i> .....	23
<i><b>Color Blindness Simulation</b></i> .....	26
<i><b>CSS Examples</b></i> .....	29

**Color**

**Decimal(5190460)**

# Conversions

## Conversions Part 1

Format	Color
Hex	4F333C
RGB	79, 51, 60
RGB Percent	31%, 20%, 24%
CMY	0.6902, 0.8000, 0.7647
CMYK	0.00, 0.35, 0.24, 0.69
HSL	341°, 22%, 25%
HSV	341°, 35%, 31%
XYZ	5.2239, 4.3562, 4.8405
YIQ	60.3980, 13.7990, 8.7350

# Conversions

## Conversions Part 2

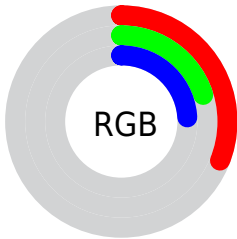
<b>Format</b>	<b>Color</b>
<b>R<sub>YB</sub></b>	79, 51, 60
Decimal	5190460
CIE Lab	24.82, 14.17, -0.48
CIE LCh	25, 14.182, 358.068
Yxy	4.3562, 0.3623, 0.3021
Android (android.graphics.Color)	4283380540 (0xFF4F333C)
YUV	60.3980, -0.1962, 16.3140
Hunter-Lab	20.8714, 8.1516, 0.8596

# Details

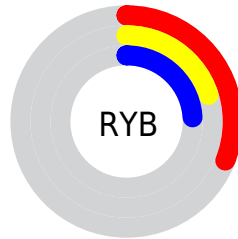
The Decimal color **5190460** is a dark color, and the websafe version is hex **663333**. A complement of this color would be **3362630**, and the grayscale version is **3947580**.

A 20% lighter version of the original color is **8479339**, and **2230034** is the 20% darker color. If you saturate the color by 10%, you get **5188407**, and if you desaturate by 10%, it is **5192513**.

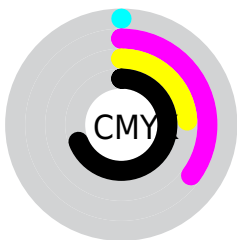
# Distribution



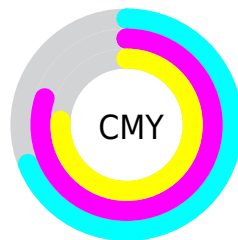
- Red (31%)
- Green (20%)
- Blue (24%)



- Red (31%)
- Yellow (20%)
- Blue (24%)



- Cyan (0%)
- Magenta (35%)
- Yellow (24%)
- Black (69%)



- Cyan (69%)
- Magenta (80%)
- Yellow (76%)

# Brightness & Saturation Gradients

These gradients show how the Decimal color 5190460 changes by changing the brightness by 10 percent. The first figure shows a shift by +10% for each color and the second figure -10%.

Similar to the brightness gradients but the following saturation gradients show a change of the Decimal color 5190460 by changing the saturation by 10% instead.



■ 5190460

■ 5190460

16777215

■ 3677734

■ 8479339

■ 2230034

■ 10189700

■ 0

■ 11965855

■ 13807545

■ 15649749

■ 16771057

■ 5190460

■ 5190460

■ 5188407

■ 5192513

■ 5186353

■ 5194567

■ 5184300

■ 5196620

■ 5182247

■ 5198673

■ 5180449

■ 5200727

■ 5178396

■ 5202524

■ 5177369

■ 5204578

■ 5206631

■ 5208684

# Harmonies

## Analogous

The Analogous color harmony consists of three colors that are next to each other on the color wheel.



4732230



5190460



5256241

# Triad

The Triadic color harmony groups three colors that are evenly spaced from another and form a triangle on the color wheel.



5190460



3685672



1982285

# Complementary

The Complementary color scheme is a pair of colors which are on the opposite of each other on the color wheel.



5190460



3362630

# Split Complementary

Split-complementary colors differ from the complementary color scheme. The scheme consists of three colors, the original color and two neighbors of the complement color.



1655109



5190460



2834479

# Square

The Square scheme is like the rectangle color scheme, but the four colors are evenly spaced on the color wheel.



5190460



4405798



2113850



2899024

# Rectangle

The Rectangle color scheme consists of four colors that form a rectangle on the color wheel.



5190460



5125419



2113850



1785930



# Sweetspot

The Sweet Spot groups the original color and five complimentary colors.



5190460



6708062



4600655



3353647



11776947



3355443



# Same Dimension

The Same Dimension uses a secret algorithm to generate beautiful new colors.



5190460



6699592



5191731



2499108



6684705



15073354



# Inverse Universe

The Inverse Universe completely reimagines the original color for something new.



5190460



6699592



3361359



2499108



6684705

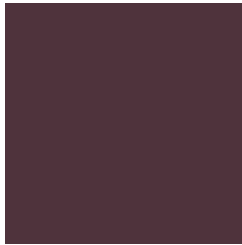


15073354



# Previews

## White Background



This preview shows how the Decimal color 5190460 looks on a white background.

## Color Contrast Check

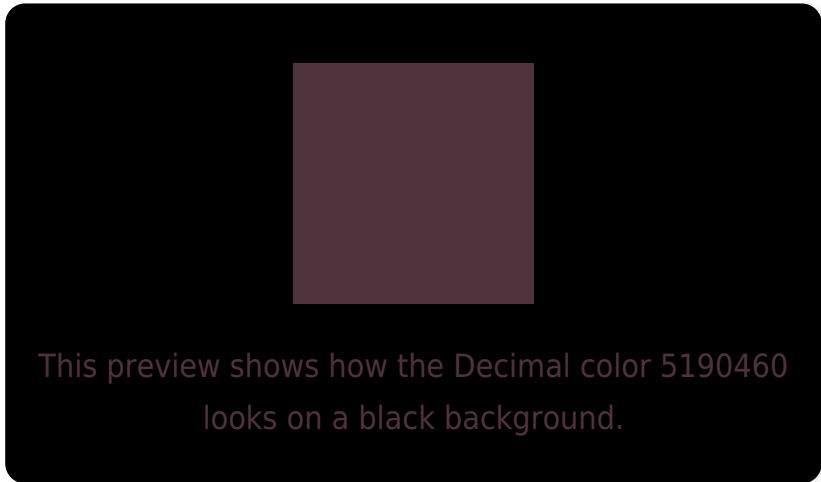
Large Text (above 18pt) WCAG AA ✓ Pass

Any Text WCAG AA ✓ Pass

Large Text (above 18pt) WCAG AAA ✓ Pass

Any Text WCAG AAA ✓ Pass

# Black Background



## Color Contrast Check

Large Text (above 18pt) WCAG AA × Fail

Any Text WCAG AA × Fail

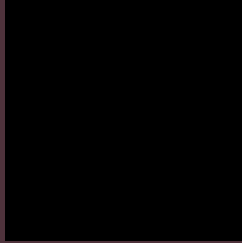
Large Text (above 18pt) WCAG AAA × Fail

Any Text WCAG AAA × Fail

If you want to check with other color combinations, try the [Color Contrast Checker](#).



## Decimal 5190460 Background



This preview shows how black text looks on a background with the Decimal color 5190460.



This preview shows how white text looks on a background with the Decimal color 5190460.

# Color Blindness Simulation

Color vision deficiency is a very complex topic, and I could not describe the different causes any better than Wikipedia does, so if you want to learn more, you should check out their [article about color blindness](#).

## Dichromacy



**Original Color**

5190460

**Protanopia**

3881793

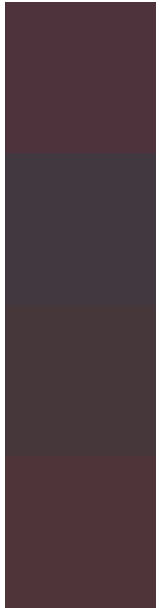
**Deuteranopia**

4274491



**Tritanopia**  
5190712

# Trichromacy



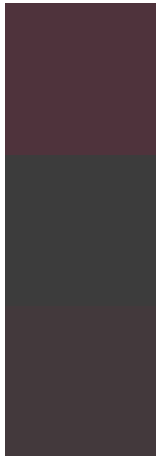
**Original Color**  
5190460

**Protanomaly**  
4339775

**Deuteranomaly**  
4601659

**Tritanomaly**  
5190713

# Monochromacy



**Original Color**  
5190460

**Achromatopsia**  
3947580

**Achromatomaly**  
4405564

# CSS Examples

## Text

The CSS property to change the color of the text to Decimal 5190460 is called "color". The color property can be set on classes, ids or directly on the HTML element.

This example shows how text in the color #4F333C looks like.

```
.text, #text, p{  
    color:#4F333C  
}
```

If you want to add a text shadow in that color use the text-shadow property, you can generate a text shadow directly with our [CSS Text Shadow Generator](#).

Here you see how black text with a 4 pixel #4F333C colored shadow looks like.

```
.shadow{ text-shadow: 4px 4px 2px #4F333C
}
```

## Border

The CSS property to change the border of an element to Decimal 5190460 is called "border". The border property can be set on classes, ids or directly on the HTML element.

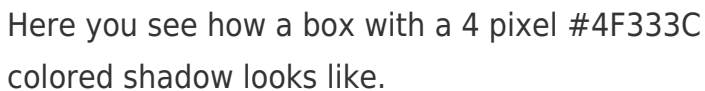
This example shows the color as border, it can be applied via the CSS property "border" or "border-color".

```
.border, #border, table{ border:4px solid
#4F333C }
```

If only the border color should be changed use the property `border-color`.

```
.border{ border-color:#4F333C }
```

If you want to add a box shadow in that color use:



Here you see how a box with a 4 pixel #4F333C colored shadow looks like.

```
.boxshadow{ -moz-box-shadow:4px 4px 4px  
4px #4F333C; -webkit-box-shadow:4px 4px  
4px 4px #4F333C; box-shadow:4px 4px 4px  
4px #4F333C }
```

# Background

The CSS property to change the background color of an element to Decimal 5190460 is called "background". The background property can be set on classes, ids or directly on the HTML element.

```
.background, #background, body{  
background:#4F333C }
```

If only the background color should be changed can be used:

```
.background{ background-color:#4F333C }
```

This example shows the color as background, it is applied via the CSS property "background".

To optimize and compress your CSS code, you can use our [online CSS compressor and optimizer](#) based on csstidy. If you want to create a linear or radial gradient as background or border, check our [CSS Gradient Generator](#).



Hey! You found this booklet interesting? Support Converting Colors with the new Membership Option!

The pro membership hides all ads, plus gives you double the colors in the color bucket, and more awesome pro features!

**[Learn more, Memberships starting at \\$2.50/m!](#)**

**Follow me  
on Twitter!**

@ConvertingColor