

# Converting Colors

Decimal(5256765)

Have a look what the booklet for  
Decimal(5256765) contains.

<b>Decimal(5256765)</b> .....	3
<i><b>Conversions</b></i> .....	4
<i><b>Details</b></i> .....	6
<i><b>Harmonies</b></i> .....	11
<i><b>Previews</b></i> .....	23
<i><b>Color Blindness Simulation</b></i> .....	26
<i><b>CSS Examples</b></i> .....	29

**Color**

**Decimal(5256765)**

# Conversions

## Conversions Part 1

Format	Color
Hex	50363D
RGB	80, 54, 61
RGB Percent	31%, 21%, 24%
CMY	0.6863, 0.7882, 0.7608
CMYK	0.00, 0.32, 0.24, 0.69
HSL	344°, 19%, 26%
HSV	344°, 32%, 31%
XYZ	5.4697, 4.6807, 5.0301
YIQ	62.5720, 13.2490, 7.6890

# Conversions

## Conversions Part 2

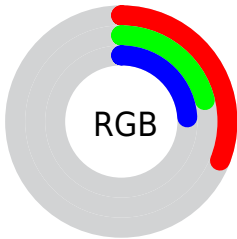
<b>Format</b>	<b>Color</b>
<b>RYB</b>	80, 54, 61
Decimal	5256765
CIELab	25.81, 12.85, 0.31
CIELCh	26, 12.849, 1.403
Yxy	4.6807, 0.3603, 0.3083
Android (android.graphics.Color)	4283446845 (0xFF50363D)
YUV	62.5720, -0.7750, 15.2844
Hunter-Lab	21.6350, 7.2670, 1.3598

# Details

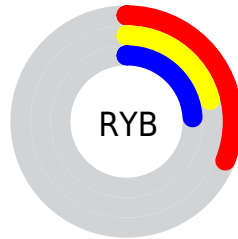
The Decimal color **5256765** is a dark color, and the websafe version is hex **333333**. A complement of this color would be **3559497**, and the grayscale version is **4144959**.

A 20% lighter version of the original color is **8545644**, and **2296595** is the 20% darker color. If you saturate the color by 10%, you get **5254711**, and if you desaturate by 10%, it is **5258819**.

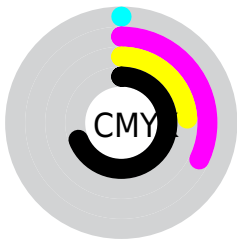
# Distribution



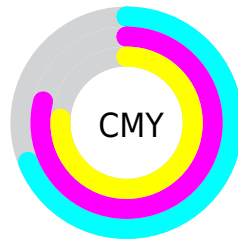
- Red (31%)
- Green (21%)
- Blue (24%)



- Red (31%)
- Yellow (21%)
- Blue (24%)



- Cyan (0%)
- Magenta (32%)
- Yellow (24%)
- Black (69%)



- Cyan (69%)
- Magenta (79%)
- Yellow (76%)

# Brightness & Saturation Gradients

These gradients show how the Decimal color 5256765 changes by changing the brightness by 10 percent. The first figure shows a shift by +10% for each color and the second figure -10%.

Similar to the brightness gradients but the following saturation gradients show a change of the Decimal color 5256765 by changing the saturation by 10% instead.



■ 5256765

■ 5256765

16777215

■ 3743783

■ 8545644

■ 2296595

■ 10256006

■ 0

■ 12032160

■ 13874107

■ 15716054

■ 16772083

■ 5256765

■ 5256765

■ 5254711

■ 5258819

■ 5252657

■ 5260873

■ 5250603

■ 5262927

■ 5248550

■ 5264980

■ 5246496

■ 5267034

■ 5244442

■ 5269088

■ 5242902

■ 5271142

■ 5273196

■ 5275250

# Harmonies

## Analogous

The Analogous color harmony consists of three colors that are next to each other on the color wheel.



4863815



5256765



5257011

# Triad

The Triadic color harmony groups three colors that are evenly spaced from another and form a triangle on the color wheel.



5256765



3751980



2441550

# Complementary

The Complementary color scheme is a pair of colors which are on the opposite of each other on the color wheel.



5256765



3559497

# Split Complementary

Split-complementary colors differ from the complementary color scheme. The scheme consists of three colors, the original color and two neighbors of the complement color.



2114119



5256765



3031603

# Square

The Square scheme is like the rectangle color scheme, but the four colors are evenly spaced on the color wheel.



5256765



4472106



2376509



3292752

# Rectangle

The Rectangle color scheme consists of four colors that form a rectangle on the color wheel.



5256765



5126190



2376509



2244940



# Sweetspot

The Sweet Spot groups the original color and five complimentary colors.



5256765



6905441



4798032



3551025



11908533



3552822



# Same Dimension

The Same Dimension uses a secret algorithm to generate beautiful new colors.



5256765



6897739



5258294



2696486



6881308



15204414



# Inverse Universe

The Inverse Universe completely reimagines the original color for something new.



5256765



6897739



3557968



2696486



6881308

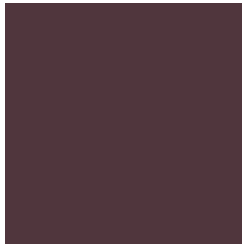


15204414



# Previews

## White Background



This preview shows how the Decimal color 5256765 looks on a white background.

## Color Contrast Check

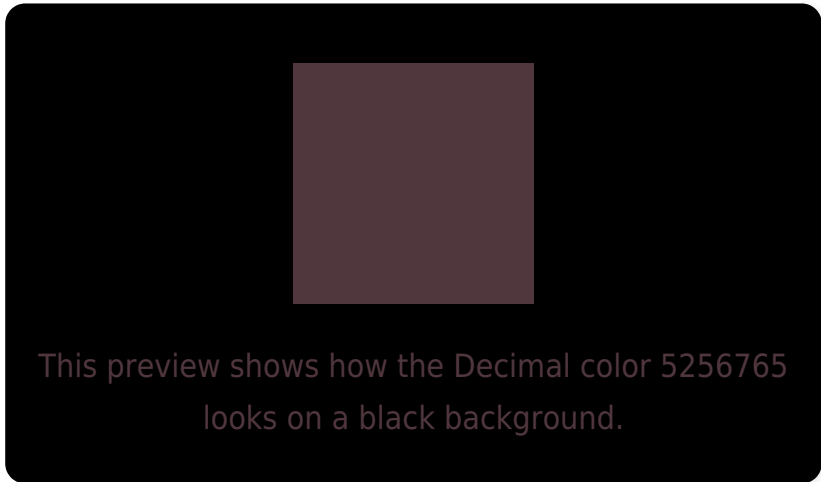
Large Text (above 18pt) WCAG AA ✓ Pass

Any Text WCAG AA ✓ Pass

Large Text (above 18pt) WCAG AAA ✓ Pass

Any Text WCAG AAA ✓ Pass

# Black Background



## Color Contrast Check

Large Text (above 18pt) WCAG AA × Fail

Any Text WCAG AA × Fail

Large Text (above 18pt) WCAG AAA × Fail

Any Text WCAG AAA × Fail

If you want to check with other color combinations, try the [Color Contrast Checker](#).



## Decimal 5256765 Background



This preview shows how black text looks on a background with the Decimal color 5256765.



This preview shows how white text looks on a background with the Decimal color 5256765.

# Color Blindness Simulation

Color vision deficiency is a very complex topic, and I could not describe the different causes any better than Wikipedia does, so if you want to learn more, you should check out their [article about color blindness](#).


## Dichromacy



**Original Color**  
5256765

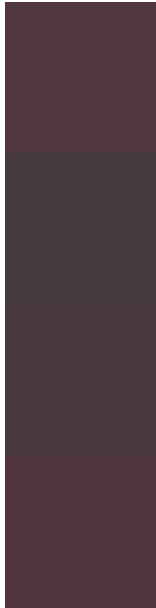
**Protanopia**  
4013377

**Deuteranopia**  
4471612



**Tritanopia**  
5256763

# Trichromacy



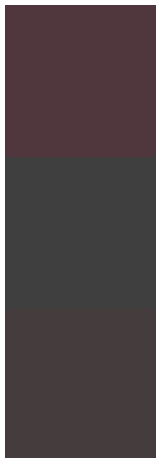
**Original Color**  
5256765

**Protanomaly**  
4471360

**Deuteranomaly**  
4733244

**Tritanomaly**  
5256764

# Monochromacy



**Original Color**  
5256765

**Achromatopsia**  
4144959

**Achromatomaly**  
4537406

# CSS Examples

## Text

The CSS property to change the color of the text to Decimal 5256765 is called "color". The color property can be set on classes, ids or directly on the HTML element.

This example shows how text in the color #50363D looks like.

```
.text, #text, p{  
    color:#50363D  
}
```

If you want to add a text shadow in that color use the text-shadow property, you can generate a text shadow directly with our [CSS Text Shadow Generator](#).

Here you see how black text with a 4 pixel #50363D colored shadow looks like.

```
.shadow{ text-shadow: 4px 4px 2px #50363D
}
```

## Border

The CSS property to change the border of an element to Decimal 5256765 is called "border". The border property can be set on classes, ids or directly on the HTML element.

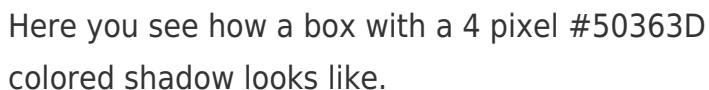
This example shows the color as border, it can be applied via the CSS property "border" or "border-color".

```
.border, #border, table{ border:4px solid
#50363D }
```

If only the border color should be changed use the property `border-color`.

```
.border{ border-color:#50363D }
```

If you want to add a box shadow in that color use:



Here you see how a box with a 4 pixel #50363D colored shadow looks like.

```
.boxshadow{ -moz-box-shadow:4px 4px 4px  
4px #50363D; -webkit-box-shadow:4px 4px  
4px 4px #50363D; box-shadow:4px 4px 4px  
4px #50363D }
```

# Background

The CSS property to change the background color of an element to Decimal 5256765 is called "background". The background property can be set on classes, ids or directly on the HTML element.

```
.background, #background, body{  
background:#50363D }
```

If only the background color should be changed can be used:

```
.background{ background-color:#50363D }
```

This example shows the color as background, it is applied via the CSS property "background".

To optimize and compress your CSS code, you can use our [online CSS compressor and optimizer](#) based on csstidy. If you want to create a linear or radial gradient as background or border, check our [CSS Gradient Generator](#).



Hey! You found this booklet interesting? Support Converting Colors with the new Membership Option!

The pro membership hides all ads, plus gives you double the colors in the color bucket, and more awesome pro features!

**[Learn more, Memberships starting at \\$2.50/m!](#)**

**Follow me  
on Twitter!**

@ConvertingColor