

# Converting Colors

Decimal(5318170)

Have a look what the booklet for  
Decimal(5318170) contains.

<b>Decimal(5318170)</b> .....	3
<i><b>Conversions</b></i> .....	4
<i><b>Details</b></i> .....	6
<i><b>Harmonies</b></i> .....	11
<i><b>Previews</b></i> .....	23
<i><b>Color Blindness Simulation</b></i> .....	26
<i><b>CSS Examples</b></i> .....	29

**Color**

**Decimal(5318170)**

# Conversions

## Conversions Part 1

Format	Color
Hex	51261A
RGB	81, 38, 26
RGB Percent	32%, 15%, 10%
CMY	0.6824, 0.8510, 0.8980
CMYK	0.00, 0.53, 0.68, 0.68
HSL	13°, 51%, 21%
HSV	13°, 68%, 32%
XYZ	4.2729, 3.2101, 1.3717
YIQ	49.4890, 29.4800, 5.3840

# Conversions

## Conversions Part 2

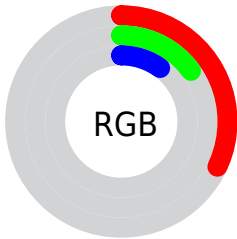
Format	Color
<b>RYB</b>	81, 41, 26
Decimal	5318170
CIELab	20.87, 18.88, 17.03
CIElCh	21, 25.422, 42.047
Yxy	3.2101, 0.4826, 0.3625
Android (android.graphics.Color)	4283508250 (0xFF51261A)
YUV	49.4890, -11.5801, 27.6351
Hunter-Lab	17.9169, 11.2151, 8.0026

# Details

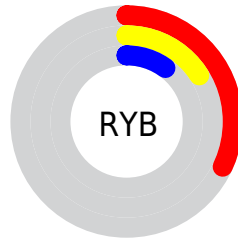
The Decimal color **5318170** is a dark color, and the websafe version is hex **663333**. A complement of this color would be **1721681**, and the grayscale version is **3289650**.

A 20% lighter version of the original color is **8737861**, and **2293760** is the 20% darker color. If you saturate the color by 10%, you get **5316626**, and if you desaturate by 10%, it is **5319714**.

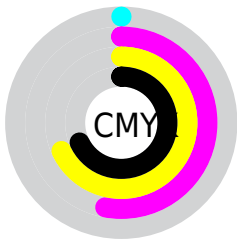
# Distribution



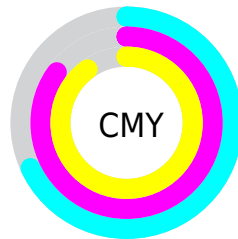
- Red (32%)
- Green (15%)
- Blue (10%)



- Red (32%)
- Yellow (16%)
- Blue (10%)



- Cyan (0%)
- Magenta (53%)
- Yellow (68%)
- Black (68%)



- Cyan (68%)
- Magenta (85%)
- Yellow (90%)

# Brightness & Saturation Gradients

These gradients show how the Decimal color 5318170 changes by changing the brightness by 10 percent. The first figure shows a shift by +10% for each color and the second figure -10%.

Similar to the brightness gradients but the following saturation gradients show a change of the Decimal color 5318170 by changing the saturation by 10% instead.



■ 5318170

■ 5318170

16777214

■ 3739648

■ 8737861

■ 2293760

■ 10579037

■ 0

■ 12420726

■ 14262415

■ 16169898

■ 16766917

■ 16774369

■ 5318170

■ 5318170

■ 5316626

■ 5319714

■ 5314826

■ 5321514

■ 5313282

■ 5323058

■ 5313024

■ 5324602

■ 5326402

■ 5327947

■ 5329491

■ 5331291

■ 5332835

# Harmonies

## Analogous

The Analogous color harmony consists of three colors that are next to each other on the color wheel.



5579307



5318170



4599053

# Triad

The Triadic color harmony groups three colors that are evenly spaced from another and form a triangle on the color wheel.



5318170



15142



1978967

# Complementary

The Complementary color scheme is a pair of colors which are on the opposite of each other on the color wheel.



5318170



1721681

# Split Complementary

Split-complementary colors differ from the complementary color scheme. The scheme consists of three colors, the original color and two neighbors of the complement color.



14166



5318170



15161

# Square

The Square scheme is like the rectangle color scheme, but the four colors are evenly spaced on the color wheel.



5318170



2177045



14923



4008526

# Rectangle

The Rectangle color scheme consists of four colors that form a rectangle on the color wheel.



5318170



3879434



14923



734296



# Sweetspot

The Sweet Spot groups the original color and five complimentary colors.



5318170



6903892



5315141



3550249



11908533



3552822



# Same Dimension

The Same Dimension uses a secret algorithm to generate beautiful new colors.



5318170



6891028



5325082



2696741



6887168



15217408



# Inverse Universe

The Inverse Universe completely reimagines the original color for something new.



1721681



1332841



1714769



2435113



21097

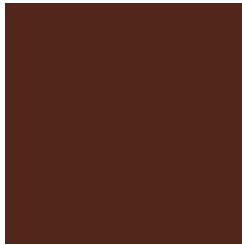


46568



# Previews

## White Background



This preview shows how the Decimal color 5318170 looks on a white background.

## Color Contrast Check

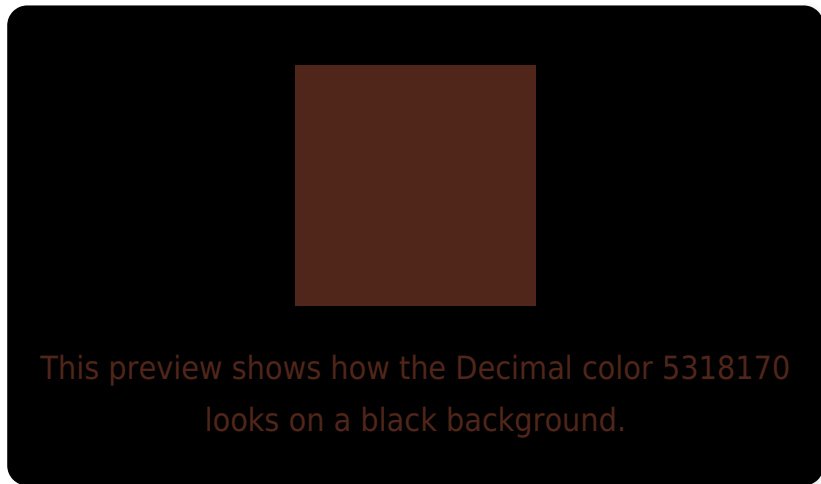
Large Text (above 18pt) WCAG AA ✓ Pass

Any Text WCAG AA ✓ Pass

Large Text (above 18pt) WCAG AAA ✓ Pass

Any Text WCAG AAA ✓ Pass

# Black Background



## Color Contrast Check

Large Text (above 18pt) WCAG AA × Fail

Any Text WCAG AA × Fail

Large Text (above 18pt) WCAG AAA × Fail

Any Text WCAG AAA × Fail

If you want to check with other color combinations, try the [Color Contrast Checker](#).



## Decimal 5318170 Background



This preview shows how black text looks on a background with the Decimal color 5318170.

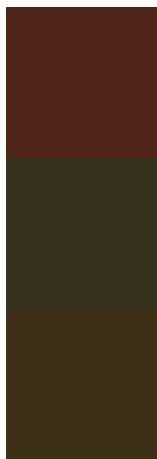


This preview shows how white text looks on a background with the Decimal color 5318170.

# Color Blindness Simulation

Color vision deficiency is a very complex topic, and I could not describe the different causes any better than Wikipedia does, so if you want to learn more, you should check out their [article about color blindness](#).

## Dichromacy



**Original Color**  
5318170

**Protanopia**  
3683103

**Deuteranopia**  
4141336



**Tritanopia**  
5383207

# Trichromacy



**Original Color**

5318170

**Protanomaly**

4271645

**Deuteranomaly**

4599065

**Tritanomaly**

5383458

# Monochromacy



**Original Color**

5318170

**Achromatopsia**

3223857

**Achromatomaly**

4009257

# CSS Examples

## Text

The CSS property to change the color of the text to Decimal 5318170 is called "color". The color property can be set on classes, ids or directly on the HTML element.

This example shows how text in the color #51261A looks like.

```
.text, #text, p{  
    color:#51261A  
}
```

If you want to add a text shadow in that color use the text-shadow property, you can generate a text shadow directly with our [CSS Text Shadow Generator](#).

Here you see how black text with a 4 pixel #51261A colored shadow looks like.

```
.shadow{ text-shadow: 4px 4px 2px #51261A
}
```

## Border

The CSS property to change the border of an element to Decimal 5318170 is called "border". The border property can be set on classes, ids or directly on the HTML element.

This example shows the color as border, it can be applied via the CSS property "border" or "border-color".

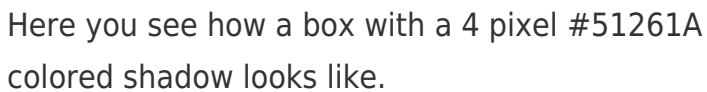
```
.border, #border, table{ border:4px solid
#51261A }
```

If only the border color should be changed use the property `border-color`.

```
.border{ border-color:#51261A }
```

If you want to add a box shadow in that color use:

Here you see how a box with a 4 pixel #51261A colored shadow looks like.



```
.boxshadow{ -moz-box-shadow:4px 4px 4px  
4px #51261A; -webkit-box-shadow:4px 4px  
4px 4px #51261A; box-shadow:4px 4px 4px  
4px #51261A }
```

# Background

The CSS property to change the background color of an element to Decimal 5318170 is called "background". The background property can be set on classes, ids or directly on the HTML element.

```
.background, #background, body{  
background:#51261A }
```

If only the background color should be changed can be used:

```
.background{ background-color:#51261A }
```

This example shows the color as background, it is applied via the CSS property "background".

To optimize and compress your CSS code, you can use our [online CSS compressor and optimizer](#) based on csstidy. If you want to create a linear or radial gradient as background or border, check our [CSS Gradient Generator](#).



Hey! You found this booklet interesting? Support Converting Colors with the new Membership Option!

The pro membership hides all ads, plus gives you double the colors in the color bucket, and more awesome pro features!

**[Learn more, Memberships starting at \\$2.50/m!](#)**

**Follow me  
on Twitter!**

@ConvertingColor