

Converting Colors

Decimal(5320747)

Have a look what the booklet for
Decimal(5320747) contains.

Decimal(5320747)	3
<i>Conversions</i>	4
<i>Details</i>	6
<i>Harmonies</i>	11
<i>Previews</i>	23
<i>Color Blindness Simulation</i>	26
<i>CSS Examples</i>	29

Color

Decimal(5320747)

Conversions

Conversions Part 1

Format	Color
Hex	51302B
RGB	81, 48, 43
RGB Percent	32%, 19%, 17%
CMY	0.6824, 0.8118, 0.8314
CMYK	0.00, 0.41, 0.47, 0.68
HSL	8°, 31%, 24%
HSV	8°, 47%, 32%
XYZ	4.8863, 4.0377, 2.8073
YIQ	57.2970, 21.2730, 5.4410

Conversions

Conversions Part 2

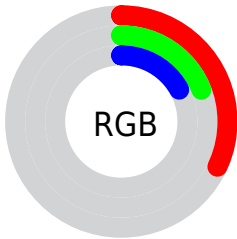
Format	Color
R_{YB}	81, 49, 43
Decimal	5320747
CIE _{Lab}	23.80, 14.38, 9.53
CIE _{LCh}	24, 17.254, 33.522
Yxy	4.0377, 0.4165, 0.3442
Android (android.graphics.Color)	4283510827 (0xFF51302B)
YUV	57.2970, -7.0484, 20.7875
Hunter-Lab	20.0939, 8.2424, 5.7824

Details

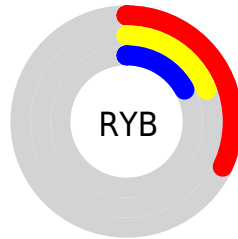
The Decimal color **5320747** is a dark color, and the websafe version is hex **663333**. A complement of this color would be **2837585**, and the grayscale version is **3750201**.

A 20% lighter version of the original color is **8674904**, and **2359808** is the 20% darker color. If you saturate the color by 10%, you get **5318947**, and if you desaturate by 10%, it is **5322547**.

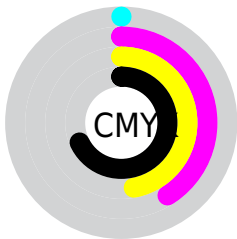
Distribution



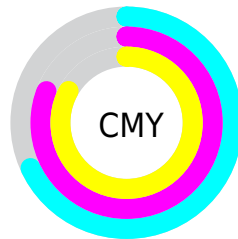
- Red (32%)
- Green (19%)
- Blue (17%)



- Red (32%)
- Yellow (19%)
- Blue (17%)



- Cyan (0%)
- Magenta (41%)
- Yellow (47%)
- Black (68%)



- Cyan (68%)
- Magenta (81%)
- Yellow (83%)

Brightness & Saturation Gradients

These gradients show how the Decimal color 5320747 changes by changing the brightness by 10 percent. The first figure shows a shift by +10% for each color and the second figure -10%.

Similar to the brightness gradients but the following saturation gradients show a change of the Decimal color 5320747 by changing the saturation by 10% instead.

■ 5320747

■ 5320747

16777215

■ 3742487

■ 8674904

■ 2359808

■ 10450801

■ 0

■ 12226954

■ 14068901

■ 15976384

■ 16770011

■ 16777208

■ 5320747

■ 5320747

■ 5318947

■ 5322547

■ 5317147

■ 5324347

■ 5315347

■ 5326147

■ 5313547

■ 5327947

■ 5311747

■ 5329748

■ 5311232

■ 5331548

■ 5333348

■ 5335148

■ 5336948

Harmonies

Analogous

The Analogous color harmony consists of three colors that are next to each other on the color wheel.



5320504



5320747



4928546

Triad

The Triadic color harmony groups three colors that are evenly spaced from another and form a triangle on the color wheel.



5320747



2244397



2701650

Complementary

The Complementary color scheme is a pair of colors which are on the opposite of each other on the color wheel.



5320747



2837585

Split Complementary

Split-complementary colors differ from the complementary color scheme. The scheme consists of three colors, the original color and two neighbors of the complement color.



1195343



5320747



1130554

Square

The Square scheme is like the rectangle color scheme, but the four colors are evenly spaced on the color wheel.



5320747



3292195



278342



3945806

Rectangle

The Rectangle color scheme consists of four colors that form a rectangle on the color wheel.



5320747



4470559



278342



2177874

Sweetspot

The Sweet Spot groups the original color and five complimentary colors.



5320747



6904922



5319501



3550764



11908533



3552822

Same Dimension

The Same Dimension uses a secret algorithm to generate beautiful new colors.



5320747



6895150



5325355



2696485



6884864



15212288

Inverse Universe

The Inverse Universe completely reimagines the original color for something new.



2837585



3039593



2832977



2435113



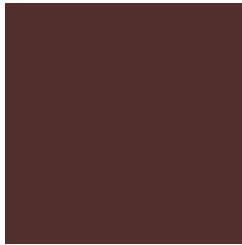
23401



51944

Previews

White Background



This preview shows how the Decimal color 5320747 looks on a white background.

Color Contrast Check

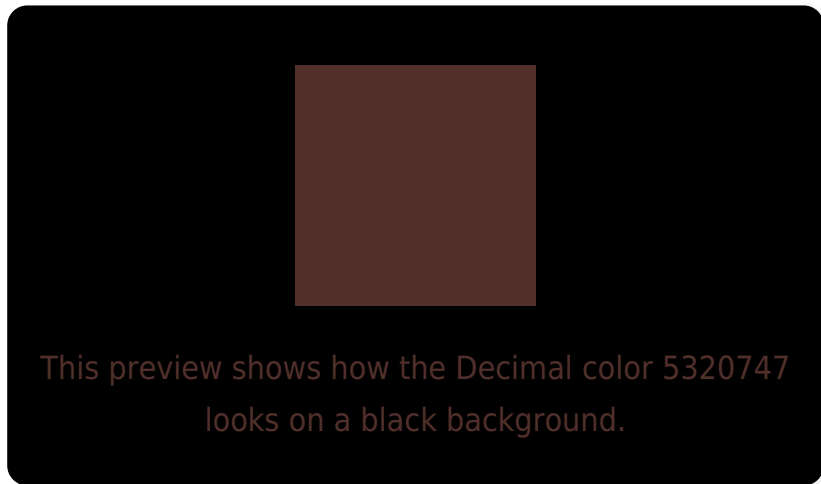
Large Text (above 18pt) WCAG AA ✓ Pass

Any Text WCAG AA ✓ Pass

Large Text (above 18pt) WCAG AAA ✓ Pass

Any Text WCAG AAA ✓ Pass

Black Background



Color Contrast Check

Large Text (above 18pt) WCAG AA × Fail

Any Text WCAG AA × Fail

Large Text (above 18pt) WCAG AAA × Fail

Any Text WCAG AAA × Fail

If you want to check with other color combinations, try the [Color Contrast Checker](#).

Decimal 5320747 Background



This preview shows how black text looks on a background with the Decimal color 5320747.

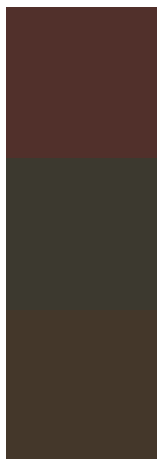


This preview shows how white text looks on a background with the Decimal color 5320747.

Color Blindness Simulation

Color vision deficiency is a very complex topic, and I could not describe the different causes any better than Wikipedia does, so if you want to learn more, you should check out their [article about color blindness](#).

Dichromacy



Original Color
5320747

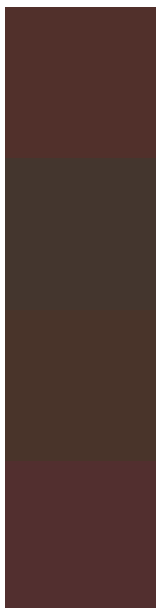
Protanopia
3946799

Deuteranopia
4470570



Tritanopia
5386034

Trichromacy



Original Color

5320747

Protanomaly

4470318

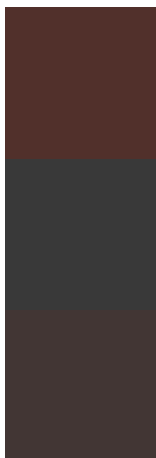
Deuteranomaly

4797482

Tritanomaly

5386031

Monochromacy



Original Color

5320747

Achromatopsia

3750201

Achromatomaly

4339252

CSS Examples

Text

The CSS property to change the color of the text to Decimal 5320747 is called "color". The color property can be set on classes, ids or directly on the HTML element.

This example shows how text in the color #51302B looks like.

```
.text, #text, p{  
    color:#51302B  
}
```

If you want to add a text shadow in that color use the text-shadow property, you can generate a text shadow directly with our [CSS Text Shadow Generator](#).

Here you see how black text with a 4 pixel #51302B colored shadow looks like.

```
.shadow{ text-shadow: 4px 4px 2px #51302B
}
```

Border

The CSS property to change the border of an element to Decimal 5320747 is called "border". The border property can be set on classes, ids or directly on the HTML element.

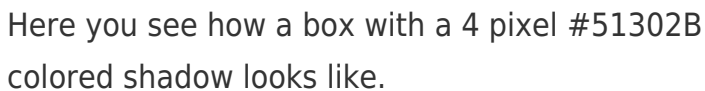
This example shows the color as border, it can be applied via the CSS property "border" or "border-color".

```
.border, #border, table{ border:4px solid
#51302B }
```

If only the border color should be changed use the property `border-color`.

```
.border{ border-color:#51302B }
```

If you want to add a box shadow in that color use:



Here you see how a box with a 4 pixel #51302B colored shadow looks like.

```
.boxshadow{ -moz-box-shadow:4px 4px 4px  
4px #51302B; -webkit-box-shadow:4px 4px  
4px 4px #51302B; box-shadow:4px 4px 4px  
4px #51302B }
```

Background

The CSS property to change the background color of an element to Decimal 5320747 is called "background". The background property can be set on classes, ids or directly on the HTML element.

```
.background, #background, body{  
background:#51302B }
```

If only the background color should be changed can be used:

```
.background{ background-color:#51302B }
```

This example shows the color as background, it is applied via the CSS property "background".

To optimize and compress your CSS code, you can use our [online CSS compressor and optimizer](#) based on csstidy. If you want to create a linear or radial gradient as background or border, check our [CSS Gradient Generator](#).

Hey! You found this booklet interesting? Support Converting Colors with the new Membership Option!

The pro membership hides all ads, plus gives you double the colors in the color bucket, and more awesome pro features!

[Learn more, Memberships starting at \\$2.50/m!](#)

**Follow me
on Twitter!**

@ConvertingColor