

Converting Colors

Decimal(5582384)

Have a look what the booklet for
Decimal(5582384) contains.

Decimal(5582384)	3
<i>Conversions</i>	4
<i>Details</i>	6
<i>Harmonies</i>	11
<i>Previews</i>	23
<i>Color Blindness Simulation</i>	26
<i>CSS Examples</i>	29

Color

Decimal(5582384)

Conversions

Conversions Part 1

Format	Color
Hex	552E30
RGB	85, 46, 48
RGB Percent	33%, 18%, 19%
CMY	0.6667, 0.8196, 0.8118
CMYK	0.00, 0.46, 0.44, 0.67
HSL	357°, 30%, 26%
HSV	357°, 46%, 33%
XYZ	5.2568, 4.0987, 3.3104
YIQ	57.8890, 22.6020, 8.8900

Conversions

Conversions Part 2

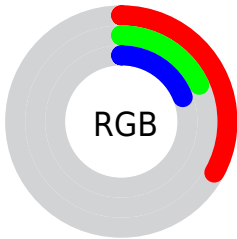
Format	Color
R_{YB}	85, 46, 48
Decimal	5582384
CIE _{Lab}	24.00, 18.11, 6.54
CIE _{LCh}	24, 19.252, 19.844
Yxy	4.0987, 0.4150, 0.3236
Android (android.graphics.Color)	4283772464 (0xFF552E30)
YUV	57.8890, -4.8753, 23.7763
Hunter-Lab	20.2452, 10.9196, 4.4769

Details

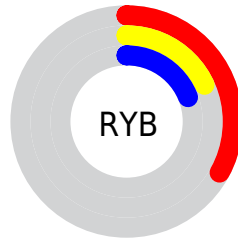
The Decimal color **5582384** is a dark color, and the websafe version is hex **663333**. A complement of this color would be **3036499**, and the grayscale version is **3815994**.

A 20% lighter version of the original color is **8936798**, and **2621440** is the 20% darker color. If you saturate the color by 10%, you get **5580072**, and if you desaturate by 10%, it is **5584440**.

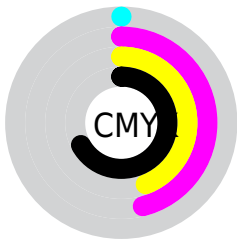
Distribution



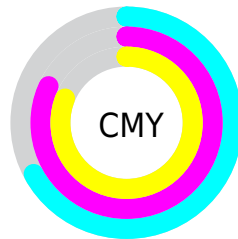
- Red (33%)
- Green (18%)
- Blue (19%)



- Red (33%)
- Yellow (18%)
- Blue (19%)



- Cyan (0%)
- Magenta (46%)
- Yellow (44%)
- Black (67%)



- Cyan (67%)
- Magenta (82%)
- Yellow (81%)

Brightness & Saturation Gradients

These gradients show how the Decimal color 5582384 changes by changing the brightness by 10 percent. The first figure shows a shift by +10% for each color and the second figure -10%.

Similar to the brightness gradients but the following saturation gradients show a change of the Decimal color 5582384 by changing the saturation by 10% instead.

■ 5582384

■ 5582384

16777215

■ 4003867

■ 8936798

■ 2621440

■ 10712695

■ 0

■ 12554128

■ 14396075

■ 16303558

■ 16769506

16776959

■ 5582384

■ 5582384

■ 5580072

■ 5584440

■ 5578016

■ 5586752

■ 5575704

■ 5588808

■ 5573648

■ 5591120

■ 5571592

■ 5593176

■ 5570564

■ 5595488

■ 5597544

■ 5599857

■ 5601913

Harmonies

Analogous

The Analogous color harmony consists of three colors that are next to each other on the color wheel.



5385791



5582384



5320996

Triad

The Triadic color harmony groups three colors that are evenly spaced from another and form a triangle on the color wheel.



5582384



2637606



1653845

Complementary

The Complementary color scheme is a pair of colors which are on the opposite of each other on the color wheel.



5582384



3036499

Split Complementary

Split-complementary colors differ from the complementary color scheme. The scheme consists of three colors, the original color and two neighbors of the complement color.



16207



5582384



1327155

Square

The Square scheme is like the rectangle color scheme, but the four colors are evenly spaced on the color wheel.



5582384



3750685



16706



3356500

Rectangle

The Rectangle color scheme consists of four colors that form a rectangle on the color wheel.



5582384



4928798



16706



933204

Sweetspot

The Sweet Spot groups the original color and five complimentary colors.



5582384



7233119



5385813



3682095



12105912



3684408

Same Dimension

The Same Dimension uses a secret algorithm to generate beautiful new colors.



5582384



7221556



5586734



2828071



7012357



15400972

Inverse Universe

The Inverse Universe completely reimagines the original color for something new.



5582384



7221556



3032149



2828071



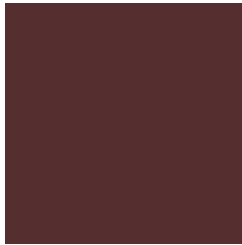
7012357



15400972

Previews

White Background



This preview shows how the Decimal color 5582384 looks on a white background.

Color Contrast Check

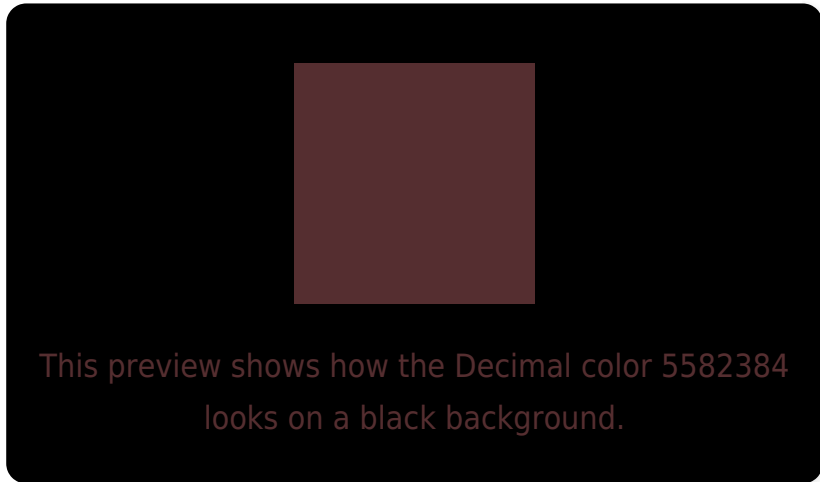
Large Text (above 18pt) WCAG AA ✓ Pass

Any Text WCAG AA ✓ Pass

Large Text (above 18pt) WCAG AAA ✓ Pass

Any Text WCAG AAA ✓ Pass

Black Background



Color Contrast Check

Large Text (above 18pt) WCAG AA × Fail

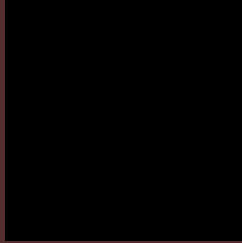
Any Text WCAG AA × Fail

Large Text (above 18pt) WCAG AAA × Fail

Any Text WCAG AAA × Fail

If you want to check with other color combinations, try the [Color Contrast Checker](#).

Decimal 5582384 Background



This preview shows how black text looks on a background with the Decimal color 5582384.



This preview shows how white text looks on a background with the Decimal color 5582384.

Color Blindness Simulation

Color vision deficiency is a very complex topic, and I could not describe the different causes any better than Wikipedia does, so if you want to learn more, you should check out their [article about color blindness](#).


Dichromacy



Original Color
5582384

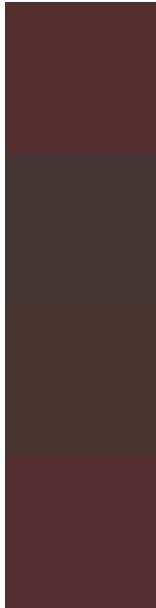
Protanopia
3946806

Deuteranopia
4405038



Tritanopia
5582385

Trichromacy



Original Color

5582384

Protanomaly

4535604

Deuteranomaly

4863023

Tritanomaly

5582385

Monochromacy



Original Color

5582384

Achromatopsia

3815994

Achromatomaly

4470326

CSS Examples

Text

The CSS property to change the color of the text to Decimal 552384 is called "color". The color property can be set on classes, ids or directly on the HTML element.

This example shows how text in the color #552E30 looks like.

```
.text, #text, p{  
  color:#552E30  
}
```

If you want to add a text shadow in that color use the text-shadow property, you can generate a text shadow directly with our [CSS Text Shadow Generator](#).

Here you see how black text with a 4 pixel #552E30 colored shadow looks like.

```
.shadow{ text-shadow: 4px 4px 2px #552E30
}
```

Border

The CSS property to change the border of an element to Decimal 5582384 is called "border". The border property can be set on classes, ids or directly on the HTML element.

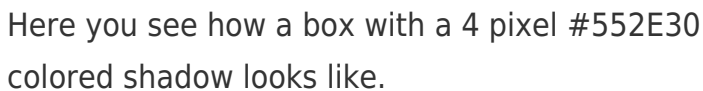
This example shows the color as border, it can be applied via the CSS property "border" or "border-color".

```
.border, #border, table{ border:4px solid
#552E30 }
```

If only the border color should be changed use the property `border-color`.

```
.border{ border-color:#552E30 }
```

If you want to add a box shadow in that color use:



Here you see how a box with a 4 pixel #552E30 colored shadow looks like.

```
.boxshadow{ -moz-box-shadow:4px 4px 4px  
4px #552E30; -webkit-box-shadow:4px 4px  
4px 4px #552E30; box-shadow:4px 4px 4px  
4px #552E30 }
```

Background

The CSS property to change the background color of an element to Decimal 5582384 is called "background". The background property can be set on classes, ids or directly on the HTML element.

```
.background, #background, body{  
background:#552E30 }
```

If only the background color should be changed can be used:

```
.background{ background-color:#552E30 }
```

This example shows the color as background, it is applied via the CSS property "background".

To optimize and compress your CSS code, you can use our [online CSS compressor and optimizer](#) based on csstidy. If you want to create a linear or radial gradient as background or border, check our [CSS Gradient Generator](#).

Hey! You found this booklet interesting? Support Converting Colors with the new Membership Option!

The pro membership hides all ads, plus gives you double the colors in the color bucket, and more awesome pro features!

[Learn more, Memberships starting at \\$2.50/m!](#)

**Follow me
on Twitter!**

@ConvertingColor