

# Converting Colors

Decimal(5648955)

Have a look what the booklet for  
Decimal(5648955) contains.

<b>Decimal(5648955)</b> .....	3
<i><b>Conversions</b></i> .....	4
<i><b>Details</b></i> .....	6
<i><b>Harmonies</b></i> .....	11
<i><b>Previews</b></i> .....	23
<i><b>Color Blindness Simulation</b></i> .....	26
<i><b>CSS Examples</b></i> .....	29

**Color**

**Decimal(5648955)**

# Conversions

## Conversions Part 1

<b>Format</b>	<b>Color</b>
Hex	56323B
RGB	86, 50, 59
RGB Percent	34%, 20%, 23%
CMY	0.6627, 0.8039, 0.7686
CMYK	0.00, 0.42, 0.31, 0.66
HSL	345°, 26%, 27%
HSV	345°, 42%, 34%
XYZ	5.7678, 4.5754, 4.7168
YIQ	61.7900, 18.5670, 10.4310

# Conversions

## Conversions Part 2

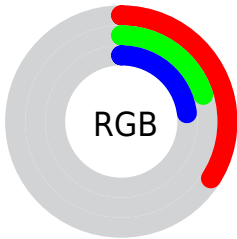
<b>Format</b>	<b>Color</b>
<b>RYB</b>	86, 50, 59
Decimal	5648955
CIELab	25.49, 17.65, 1.29
CIElCh	25, 17.698, 4.185
Yxy	4.5754, 0.3830, 0.3038
Android (android.graphics.Color)	4283839035 (0xFF56323B)
YUV	61.7900, -1.3755, 21.2322
Hunter-Lab	21.3902, 10.6989, 1.8989

# Details

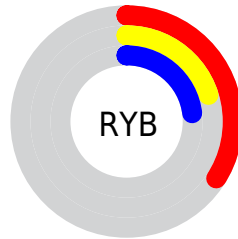
The Decimal color **5648955** is a dark color, and the websafe version is hex **663333**. A complement of this color would be **3298893**, and the grayscale version is **4079166**.

A 20% lighter version of the original color is **9003370**, and **2622992** is the 20% darker color. If you saturate the color by 10%, you get **5646645**, and if you desaturate by 10%, it is **5651265**.

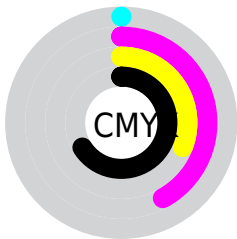
# Distribution



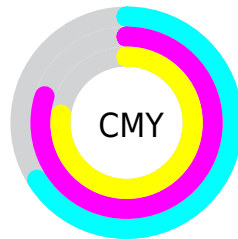
- Red (34%)
- Green (20%)
- Blue (23%)



- Red (34%)
- Yellow (20%)
- Blue (23%)



- Cyan (0%)
- Magenta (42%)
- Yellow (31%)
- Black (66%)



- Cyan (66%)
- Magenta (80%)
- Yellow (77%)

# Brightness & Saturation Gradients

These gradients show how the Decimal color 5648955 changes by changing the brightness by 10 percent. The first figure shows a shift by +10% for each color and the second figure -10%.

Similar to the brightness gradients but the following saturation gradients show a change of the Decimal color 5648955 by changing the saturation by 10% instead.



■ 5648955

■ 5648955

16777215

■ 4070437

■ 9003370

■ 2622992

■ 10779267

■ 0

■ 12555421

■ 14397368

■ 16304852

■ 16770800

■ 5648955

■ 5648955

■ 5646645

■ 5651265

■ 5644590

■ 5653320

■ 5642280

■ 5655630

■ 5640225

■ 5657685

■ 5637915

■ 5659995

■ 5636118

■ 5662306

■ 5664360

■ 5666671

■ 5668725

# Harmonies

## Analogous

The Analogous color harmony consists of three colors that are next to each other on the color wheel.



5190728



5648955



5649454

# Triad

The Triadic color harmony groups three colors that are evenly spaced from another and form a triangle on the color wheel.



5648955



3489830



1392980

# Complementary

The Complementary color scheme is a pair of colors which are on the opposite of each other on the color wheel.



5648955



3298893

# Split Complementary

Split-complementary colors differ from the complementary color scheme. The scheme consists of three colors, the original color and two neighbors of the complement color.



475979



5648955



2442032

# Square

The Square scheme is like the rectangle color scheme, but the four colors are evenly spaced on the color wheel.



5648955



4406305



1262654



2899287

# Rectangle

The Rectangle color scheme consists of four colors that form a rectangle on the color wheel.



5648955



5387815



1262654



934482



# Sweetspot

The Sweet Spot groups the original color and five complimentary colors.



5648955



7365221



5059158



3682097



12105912



3684408



# Same Dimension

The Same Dimension uses a secret algorithm to generate beautiful new colors.



5648955



7354438



5651250



2828072



7012379



15401019



# Inverse Universe

The Inverse Universe completely reimagines the original color for something new.



5648955



7354438



3296598



2828072



7012379

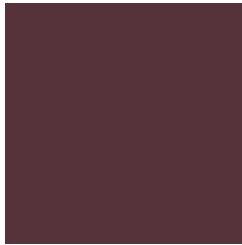


15401019



# Previews

## White Background



This preview shows how the Decimal color 5648955 looks on a white background.

## Color Contrast Check

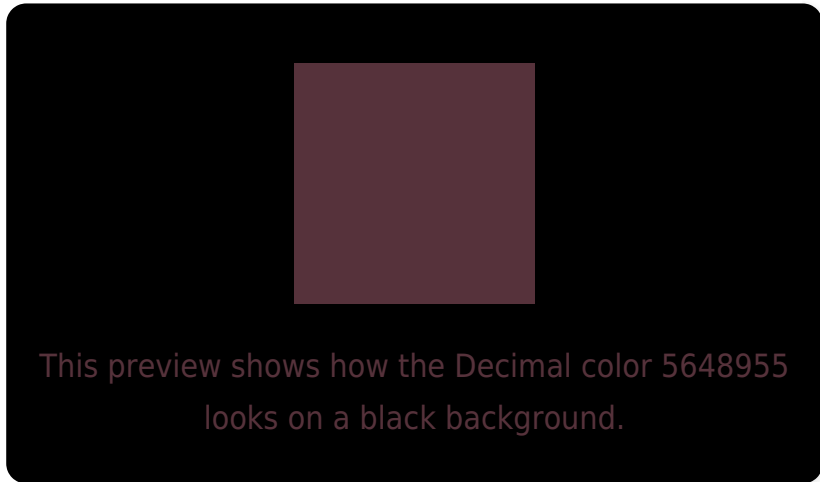
Large Text (above 18pt) WCAG AA ✓ Pass

Any Text WCAG AA ✓ Pass

Large Text (above 18pt) WCAG AAA ✓ Pass

Any Text WCAG AAA ✓ Pass

# Black Background



## Color Contrast Check

Large Text (above 18pt) WCAG AA × Fail

Any Text WCAG AA × Fail

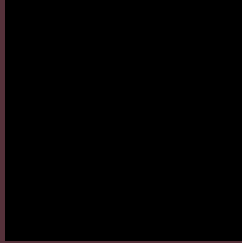
Large Text (above 18pt) WCAG AAA × Fail

Any Text WCAG AAA × Fail

If you want to check with other color combinations, try the [Color Contrast Checker](#).



## Decimal 5648955 Background



This preview shows how black text looks on a background with the Decimal color 5648955.



This preview shows how white text looks on a background with the Decimal color 5648955.

# Color Blindness Simulation

Color vision deficiency is a very complex topic, and I could not describe the different causes any better than Wikipedia does, so if you want to learn more, you should check out their [article about color blindness](#).

## Dichromacy



**Original Color**

5648955

**Protanopia**

4013121

**Deuteranopia**

4471609



**Tritanopia**  
5649207

# Trichromacy



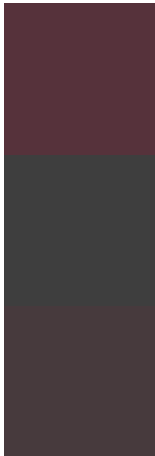
**Original Color**  
5648955

**Protanomaly**  
4601919

**Deuteranomaly**  
4929594

**Tritanomaly**  
5649208

# Monochromacy



**Original Color**  
5648955

**Achromatopsia**  
4079166

**Achromatomaly**  
4667965

# CSS Examples

## Text

The CSS property to change the color of the text to Decimal 5648955 is called "color". The color property can be set on classes, ids or directly on the HTML element.

This example shows how text in the color #56323B looks like.

```
.text, #text, p{  
    color:#56323B  
}
```

If you want to add a text shadow in that color use the text-shadow property, you can generate a text shadow directly with our [CSS Text Shadow Generator](#).

Here you see how black text with a 4 pixel #56323B colored shadow looks like.

```
.shadow{ text-shadow: 4px 4px 2px #56323B
}
```

## Border

The CSS property to change the border of an element to Decimal 5648955 is called "border". The border property can be set on classes, ids or directly on the HTML element.

This example shows the color as border, it can be applied via the CSS property "border" or "border-color".

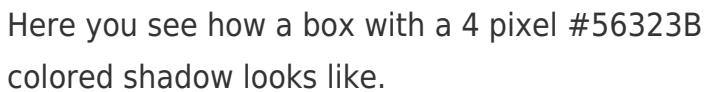
```
.border, #border, table{ border:4px solid
#56323B }
```

If only the border color should be changed use the property `border-color`.

```
.border{ border-color:#56323B }
```

If you want to add a box shadow in that color use:

Here you see how a box with a 4 pixel #56323B colored shadow looks like.

A rectangular box with a dark red border and a dark red shadow. The box is white with a thin dark red border on the top and left sides, and a thicker dark red shadow on the bottom and right sides.

```
.boxshadow{ -moz-box-shadow:4px 4px 4px  
4px #56323B; -webkit-box-shadow:4px 4px  
4px 4px #56323B; box-shadow:4px 4px 4px  
4px #56323B }
```

# Background

The CSS property to change the background color of an element to Decimal 5648955 is called "background". The background property can be set on classes, ids or directly on the HTML element.

```
.background, #background, body{  
background:#56323B }
```

If only the background color should be changed can be used:

```
.background{ background-color:#56323B }
```

This example shows the color as background, it is applied via the CSS property "background".

To optimize and compress your CSS code, you can use our [online CSS compressor and optimizer](#) based on csstidy. If you want to create a linear or radial gradient as background or border, check our [CSS Gradient Generator](#).



# Hey! You found this booklet interesting? Support Converting Colors with the new Membership Option!

The pro membership hides all ads, plus gives you double the colors in the color bucket, and more awesome pro features!

**[Learn more, Memberships starting at \\$2.50/m!](#)**

**Follow me  
on Twitter!**

@ConvertingColor