

Converting Colors

Decimal(5721930)

Have a look what the booklet for
Decimal(5721930) contains.

Decimal(5721930)	3
<i>Conversions</i>	4
<i>Details</i>	6
<i>Harmonies</i>	11
<i>Previews</i>	23
<i>Color Blindness Simulation</i>	26
<i>CSS Examples</i>	29

Color

Decimal(5721930)

Conversions

Conversions Part 1

Format	Color
Hex	574F4A
RGB	87, 79, 74
RGB Percent	34%, 31%, 29%
CMY	0.6588, 0.6902, 0.7098
CMYK	0.00, 0.09, 0.15, 0.66
HSL	23°, 8%, 32%
HSV	23°, 15%, 34%
XYZ	7.9625, 8.1126, 7.6248
YIQ	80.8220, 6.3730, 0.1410

Conversions

Conversions Part 2

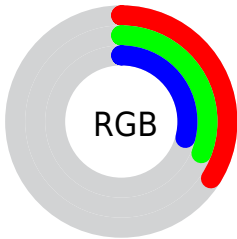
Format	Color
RYB	87, 82, 74
Decimal	5721930
CIELab	34.22, 2.33, 4.14
CIELCh	34, 4.754, 60.650
Yxy	8.1126, 0.3360, 0.3423
Android (android.graphics.Color)	4283912010 (0xFF574F4A)
YUV	80.8220, -3.3632, 5.4181
Hunter-Lab	28.4827, 0.0561, 4.0660

Details

The Decimal color **5721930** is a dark color, and the websafe version is hex **666666**. A complement of this color would be **4870743**, and the grayscale version is **5329233**.

A 20% lighter version of the original color is **9011323**, and **2761502** is the 20% darker color. If you saturate the color by 10%, you get **5720641**, and if you desaturate by 10%, it is **5723219**.

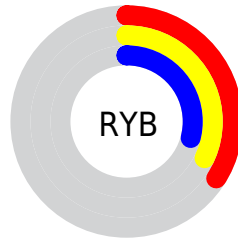
Distribution



Red (34%)

Green (31%)

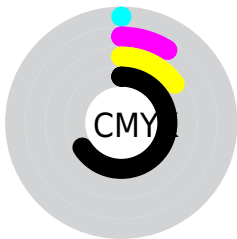
Blue (29%)



Red (34%)

Yellow (32%)

Blue (29%)

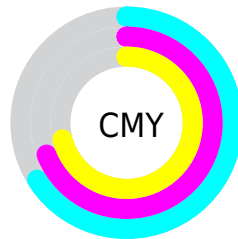


Cyan (0%)

Magenta (9%)

Yellow (15%)

Black (66%)



Cyan (66%)

Magenta (69%)

Yellow (71%)

Brightness & Saturation Gradients

These gradients show how the Decimal color 5721930 changes by changing the brightness by 10 percent. The first figure shows a shift by +10% for each color and the second figure -10%.

Similar to the brightness gradients but the following saturation gradients show a change of the Decimal color 5721930 by changing the saturation by 10% instead.

■ 5721930

■ 5721930

16777215

■ 4208691

■ 9011323

■ 2761502

■ 10721940

■ 1445125

■ 12498351

■ 0

■ 14340298

■ 16248294

■ 5721930

■ 5721930

■ 5720641

■ 5723219

■ 5719097

■ 5724763

■ 5717808

■ 5726052

■ 5716519

■ 5727341

■ 5714975

■ 5728886

■ 5713686

■ 5730174

■ 5712397

■ 5731463

■ 5710852

■ 5733008

■ 5710080

■ 5734296

Harmonies

Analogous

The Analogous color harmony consists of three colors that are next to each other on the color wheel.



5852749



5721930



5525577

Triad

The Triadic color harmony groups three colors that are evenly spaced from another and form a triangle on the color wheel.



5721930



4739920



5328727

Complementary

The Complementary color scheme is a pair of colors which are on the opposite of each other on the color wheel.



5721930



4870743

Split Complementary

Split-complementary colors differ from the complementary color scheme. The scheme consists of three colors, the original color and two neighbors of the complement color.



5067096



5721930



4674388

Square

The Square scheme is like the rectangle color scheme, but the four colors are evenly spaced on the color wheel.



5721930



4936269



4805207



5656148

Rectangle

The Rectangle color scheme consists of four colors that form a rectangle on the color wheel.



5721930



5329225



4805207



5263447

Sweetspot

The Sweet Spot groups the original color and five complimentary colors.



5721930



7368044



5720658



3683893



12105912



3684408

Same Dimension

The Same Dimension uses a secret algorithm to generate beautiful new colors.



5721930



7365724



5723466



2828583



7022848



15424000

Inverse Universe

The Inverse Universe completely reimagines the original color for something new.



4870743



6056048



4869207



2566699



17003



37099

Previews

White Background



This preview shows how the Decimal color 5721930 looks on a white background.

Color Contrast Check

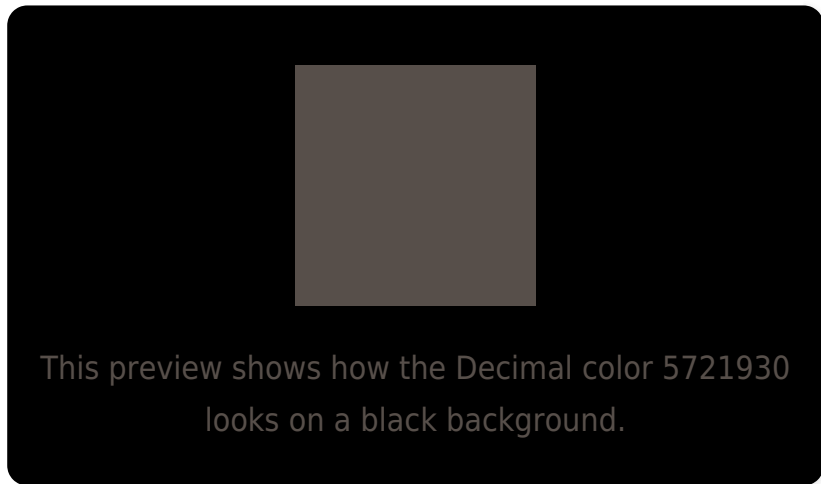
Large Text (above 18pt) WCAG AA ✓ Pass

Any Text WCAG AA ✓ Pass

Large Text (above 18pt) WCAG AAA ✓ Pass

Any Text WCAG AAA ✓ Pass

Black Background



Color Contrast Check

Large Text (above 18pt) WCAG AA × Fail

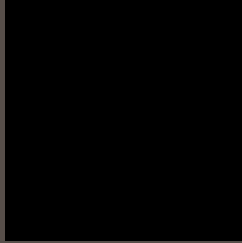
Any Text WCAG AA × Fail

Large Text (above 18pt) WCAG AAA × Fail

Any Text WCAG AAA × Fail

If you want to check with other color combinations, try the [Color Contrast Checker](#).

Decimal 5721930 Background



This preview shows how black text looks on a background with the Decimal color 5721930.



This preview shows how white text looks on a background with the Decimal color 5721930.

Color Blindness Simulation

Color vision deficiency is a very complex topic, and I could not describe the different causes any better than Wikipedia does, so if you want to learn more, you should check out their [article about color blindness](#).

Dichromacy



Original Color
5721930

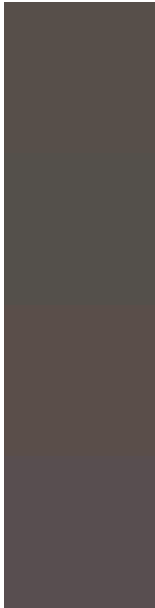
Protanopia
5460043

Deuteranopia
5983818



Tritanopia
5787220

Trichromacy



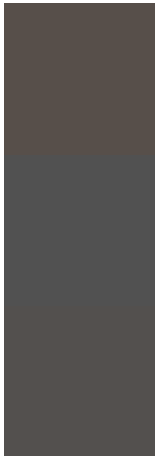
Original Color
5721930

Protanomaly
5525579

Deuteranomaly
5918282

Tritanomaly
5787216

Monochromacy



Original Color
5721930

Achromatopsia
5329233

Achromatomaly
5460046

CSS Examples

Text

The CSS property to change the color of the text to Decimal 5721930 is called "color". The color property can be set on classes, ids or directly on the HTML element.

This example shows how text in the color #574F4A looks like.

```
.text, #text, p{  
    color:#574F4A  
}
```

If you want to add a text shadow in that color use the text-shadow property, you can generate a text shadow directly with our [CSS Text Shadow Generator](#).

Here you see how black text with a 4 pixel #574F4A colored shadow looks like.

```
.shadow{ text-shadow: 4px 4px 2px #574F4A
}
```

Border

The CSS property to change the border of an element to Decimal 5721930 is called "border". The border property can be set on classes, ids or directly on the HTML element.

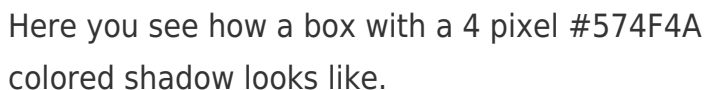
This example shows the color as border, it can be applied via the CSS property "border" or "border-color".

```
.border, #border, table{ border:4px solid
#574F4A }
```

If only the border color should be changed use the property `border-color`.

```
.border{ border-color:#574F4A }
```

If you want to add a box shadow in that color use:



Here you see how a box with a 4 pixel #574F4A colored shadow looks like.

```
.boxshadow{ -moz-box-shadow:4px 4px 4px  
4px #574F4A; -webkit-box-shadow:4px 4px  
4px 4px #574F4A; box-shadow:4px 4px 4px  
4px #574F4A }
```

Background

The CSS property to change the background color of an element to Decimal 5721930 is called "background". The background property can be set on classes, ids or directly on the HTML element.

```
.background, #background, body{  
background:#574F4A }
```

If only the background color should be changed can be used:

```
.background{ background-color:#574F4A }
```

This example shows the color as background, it is applied via the CSS property "background".

To optimize and compress your CSS code, you can use our [online CSS compressor and optimizer](#) based on csstidy. If you want to create a linear or radial gradient as background or border, check our [CSS Gradient Generator](#).

Hey! You found this booklet interesting? Support Converting Colors with the new Membership Option!

The pro membership hides all ads, plus gives you double the colors in the color bucket, and more awesome pro features!

[Learn more, Memberships starting at \\$2.50/m!](#)

**Follow me
on Twitter!**

@ConvertingColor