

Converting Colors

Decimal(6374985)

Have a look what the booklet for
Decimal(6374985) contains.

| | |
|--|----|
| Decimal(6374985) | 3 |
| <i>Conversions</i> | 4 |
| <i>Details</i> | 6 |
| <i>Harmonies</i> | 11 |
| <i>Previews</i> | 23 |
| <i>Color Blindness Simulation</i> | 26 |
| <i>CSS Examples</i> | 29 |

Color

Decimal(6374985)

Conversions

Conversions Part 1

| Format | Color |
|-------------|--------------------------|
| Hex | 614649 |
| RGB | 97, 70, 73 |
| RGB Percent | 38%, 27%, 29% |
| CMY | 0.6196, 0.7255, 0.7137 |
| CMYK | 0.00, 0.28, 0.25, 0.62 |
| HSL | 353°, 16%, 33% |
| HSV | 353°, 28%, 38% |
| XYZ | 8.3225, 7.4027, 7.2936 |
| YIQ | 78.4150, 15.1290, 6.6570 |

Conversions

Conversions Part 2

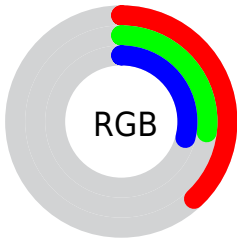
| Format | Color |
|-------------------------------------|------------------------------|
| RYB | 97, 70, 73 |
| Decimal | 6374985 |
| CIELab | 32.71, 12.09, 2.75 |
| CIELCh | 33, 12.395, 12.828 |
| Yxy | 7.4027, 0.3616, 0.3216 |
| Android (android.graphics.Color) | 4284565065 (0xFF614649) |
| YUV | 78.4150, -2.6696, 16.2990 |
| Hunter-Lab | 27.2080, 6.9866, 3.1519 |

Details

The Decimal color **6374985** is a dark color, and the websafe version is hex **663333**. A complement of this color would be **4612446**, and the grayscale version is **5131854**.

A 20% lighter version of the original color is **9729657**, and **3283486** is the 20% darker color. If you saturate the color by 10%, you get **6372416**, and if you desaturate by 10%, it is **6377554**.

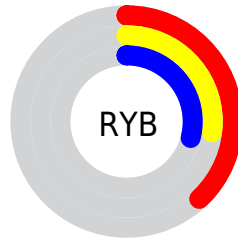
Distribution



Red (38%)

Green (27%)

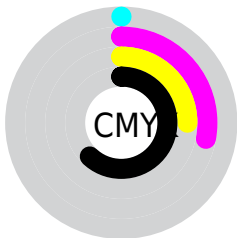
Blue (29%)



Red (38%)

Yellow (27%)

Blue (29%)

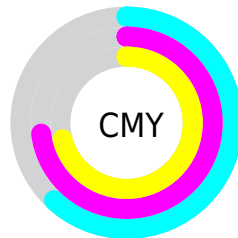


Cyan (0%)

Magenta (28%)

Yellow (25%)

Black (62%)



Cyan (62%)

Magenta (73%)

Yellow (71%)

Brightness & Saturation Gradients

These gradients show how the Decimal color 6374985 changes by changing the brightness by 10 percent. The first figure shows a shift by +10% for each color and the second figure -10%.

Similar to the brightness gradients but the following saturation gradients show a change of the Decimal color 6374985 by changing the saturation by 10% instead.

6374985

6374985

16777215

4796211

9729657

3283486

11505811

2031620

13347758

0

15189705

16769765

6374985

6374985

6372416

6377554

6370104

6379866

■ 6367535

■ 6382435

■ 6364967

■ 6385003

■ 6362654

■ 6387572

■ 6360085

■ 6389885

■ 6357517

■ 6392453

■ 6357003

■ 6395022

■ 6397335

Harmonies

Analogous

The Analogous color harmony consists of three colors that are next to each other on the color wheel.



6113107



6374985



6309696

Triad

The Triadic color harmony groups three colors that are evenly spaced from another and form a triangle on the color wheel.



6374985



4542526



3821407

Complementary

The Complementary color scheme is a pair of colors which are on the opposite of each other on the color wheel.



6374985



4612446

Split Complementary

Split-complementary colors differ from the complementary color scheme. The scheme consists of three colors, the original color and two neighbors of the complement color.



3297882



6374985



3822151

Square

The Square scheme is like the rectangle color scheme, but the four colors are evenly spaced on the color wheel.



6374985



5262906



3363665



4672608

Rectangle

The Rectangle color scheme consists of four colors that form a rectangle on the color wheel.



6374985



6048060



3363665



3625054

Sweetspot

The Sweet Spot groups the original color and five complimentary colors.



6374985



8221556



6178401



4208954



12566463



4210752

Same Dimension

The Same Dimension uses a secret algorithm to generate beautiful new colors.



6374985



8213592



6377542



3157036



7340044



15728667

Inverse Universe

The Inverse Universe completely reimagines the original color for something new.



6374985



8213592



4609889



3157036



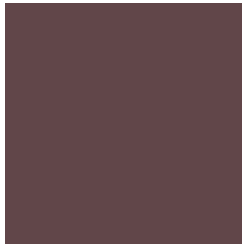
7340044



15728667

Previews

White Background



This preview shows how the Decimal color 6374985 looks on a white background.

Color Contrast Check

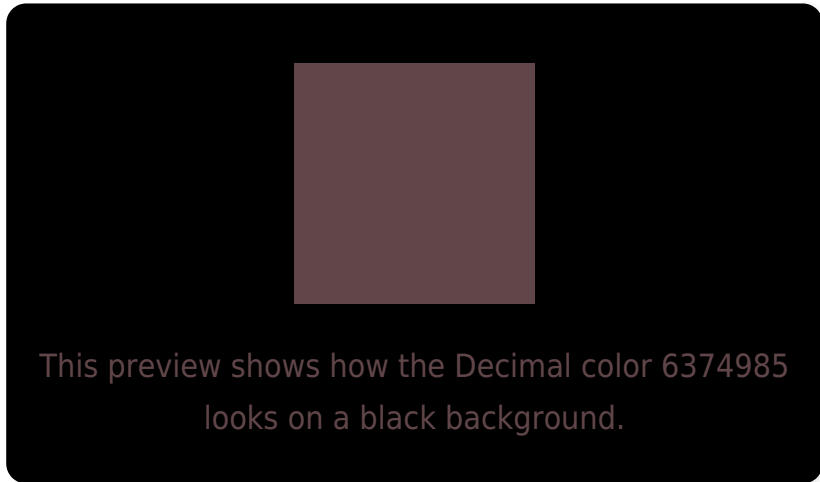
Large Text (above 18pt) WCAG AA ✓ Pass

Any Text WCAG AA ✓ Pass

Large Text (above 18pt) WCAG AAA ✓ Pass

Any Text WCAG AAA ✓ Pass

Black Background



Color Contrast Check

Large Text (above 18pt) WCAG AA × Fail

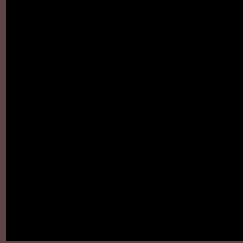
Any Text WCAG AA × Fail

Large Text (above 18pt) WCAG AAA × Fail

Any Text WCAG AAA × Fail

If you want to check with other color combinations, try the [Color Contrast Checker](#).

Decimal 6374985 Background



This preview shows how black text looks on a background with the Decimal color 6374985.

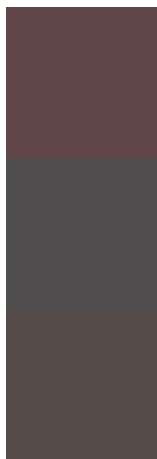


This preview shows how white text looks on a background with the Decimal color 6374985.

Color Blindness Simulation

Color vision deficiency is a very complex topic, and I could not describe the different causes any better than Wikipedia does, so if you want to learn more, you should check out their [article about color blindness](#).

Dichromacy



Original Color

6374985

Protanopia

5197133

Deuteranopia

5655112



Tritanopia
6374987

Trichromacy



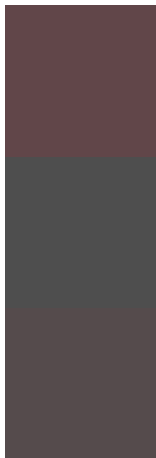
Original Color
6374985

Protanomaly
5655116

Deuteranomaly
5917000

Tritanomaly
6374986

Monochromacy



Original Color
6374985

Achromatopsia
5131854

Achromatomaly
5589836

CSS Examples

Text

The CSS property to change the color of the text to Decimal 6374985 is called "color". The color property can be set on classes, ids or directly on the HTML element.

This example shows how text in the color #614649 looks like.

```
.text, #text, p{  
    color:#614649  
}
```

If you want to add a text shadow in that color use the text-shadow property, you can generate a text shadow directly with our [CSS Text Shadow Generator](#).

Here you see how black text with a 4 pixel #614649 colored shadow looks like.

```
.shadow{ text-shadow: 4px 4px 2px #614649
}
```

Border

The CSS property to change the border of an element to Decimal 6374985 is called "border". The border property can be set on classes, ids or directly on the HTML element.

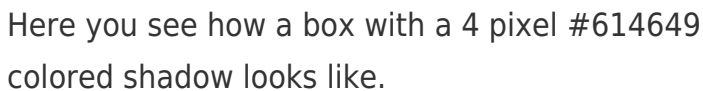
This example shows the color as border, it can be applied via the CSS property "border" or "border-color".

```
.border, #border, table{ border:4px solid
#614649 }
```

If only the border color should be changed use the property `border-color`.

```
.border{ border-color:#614649 }
```

If you want to add a box shadow in that color use:



Here you see how a box with a 4 pixel #614649 colored shadow looks like.

```
.boxshadow{ -moz-box-shadow:4px 4px 4px  
4px #614649; -webkit-box-shadow:4px 4px  
4px 4px #614649; box-shadow:4px 4px 4px  
4px #614649 }
```

Background

The CSS property to change the background color of an element to Decimal 6374985 is called "background". The background property can be set on classes, ids or directly on the HTML element.

```
.background, #background, body{  
background:#614649 }
```

If only the background color should be changed can be used:

```
.background{ background-color:#614649 }
```

This example shows the color as background, it is applied via the CSS property "background".

To optimize and compress your CSS code, you can use our [online CSS compressor and optimizer](#) based on csstidy. If you want to create a linear or radial gradient as background or border, check our [CSS Gradient Generator](#).

Hey! You found this booklet interesting? Support Converting Colors with the new Membership Option!

The pro membership hides all ads, plus gives you double the colors in the color bucket, and more awesome pro features!

[Learn more, Memberships starting at \\$2.50/m!](#)

**Follow me
on Twitter!**

@ConvertingColor