

# Converting Colors

Decimal(6766920)

Have a look what the booklet for  
Decimal(6766920) contains.

<b>Decimal(6766920)</b> .....	3
<b><i>Conversions</i></b> .....	4
<b><i>Details</i></b> .....	6
<b><i>Harmonies</i></b> .....	11
<b><i>Previews</i></b> .....	23
<b><i>Color Blindness Simulation</i></b> .....	26
<b><i>CSS Examples</i></b> .....	29

**Color**

**Decimal(6766920)**

# Conversions

## Conversions Part 1

<b>Format</b>	<b>Color</b>
Hex	674148
RGB	103, 65, 72
RGB Percent	40%, 25%, 28%
CMY	0.5961, 0.7451, 0.7176
CMYK	0.00, 0.37, 0.30, 0.60
HSL	349°, 23%, 33%
HSV	349°, 37%, 40%
XYZ	8.6535, 7.1320, 7.0514
YIQ	77.1600, 20.4010, 10.2330

# Conversions

## Conversions Part 2

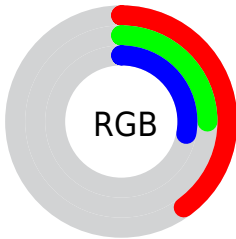
<b>Format</b>	<b>Color</b>
<b>R<sub>YB</sub></b>	103, 65, 72
Decimal	6766920
CIE Lab	32.11, 17.58, 2.62
CIE LCh	32, 17.777, 8.491
Yxy	7.1320, 0.3789, 0.3123
Android (android.graphics.Color)	4284957000 (0xFF674148)
YUV	77.1600, -2.5439, 22.6617
Hunter-Lab	26.7059, 11.1041, 3.0392

# Details

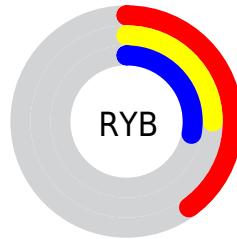
The Decimal color **6766920** is a dark color, and the websafe version is hex **663333**. A complement of this color would be **4286304**, and the grayscale version is **5066061**.

A 20% lighter version of the original color is **10187128**, and **3544349** is the 20% darker color. If you saturate the color by 10%, you get **6764352**, and if you desaturate by 10%, it is **6769488**.

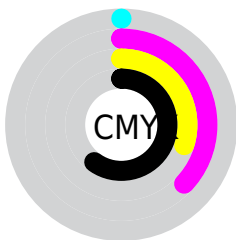
# Distribution



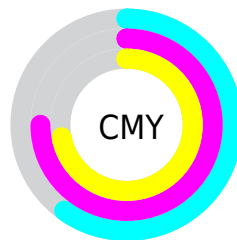
- Red (40%)
- Green (25%)
- Blue (28%)



- Red (40%)
- Yellow (25%)
- Blue (28%)



- Cyan (0%)
- Magenta (37%)
- Yellow (30%)
- Black (60%)



- Cyan (60%)
- Magenta (75%)
- Yellow (72%)

# Brightness & Saturation Gradients

These gradients show how the Decimal color 6766920 changes by changing the brightness by 10 percent. The first figure shows a shift by +10% for each color and the second figure -10%.

Similar to the brightness gradients but the following saturation gradients show a change of the Decimal color 6766920 by changing the saturation by 10% instead.





6766920



6766920

16777215



5122610



10187128



3544349



11963282



2293762



13804973



0



15712712



16768484



16775679



6766920



6766920



6764352



6769488

6761527

6772313

6758959

6774881

6756390

6777450

6753566

6780274

6750998

6782842

6750227

6785411

6787979

6790804

# Harmonies

## Analogous

The Analogous color harmony consists of three colors that are next to each other on the color wheel.



6373974



6766920



6701883

# Triad

The Triadic color harmony groups three colors that are evenly spaced from another and form a triangle on the color wheel.



6766920



4345909



2773093

# Complementary

The Complementary color scheme is a pair of colors which are on the opposite of each other on the color wheel.



6766920



4286304

# Split Complementary

Split-complementary colors differ from the complementary color scheme. The scheme consists of three colors, the original color and two neighbors of the complement color.



1921628



6766920



3232321

# Square

The Square scheme is like the rectangle color scheme, but the four colors are evenly spaced on the color wheel.



6766920



5327920



2249551



4148327

# Rectangle

The Rectangle color scheme consists of four colors that form a rectangle on the color wheel.



6766920



6374964



2249551



2380131



# Sweetspot

The Sweet Spot groups the original color and five complimentary colors.



6766920



8878203



6242663



4537406



12895428



4539717



# Same Dimension

The Same Dimension uses a secret algorithm to generate beautiful new colors.



6766920



8866903



6769729



3354159



7536661



15859757



# Inverse Universe

The Inverse Universe completely reimagines the original color for something new.



6766920



8866903



4283495



3354159



7536661

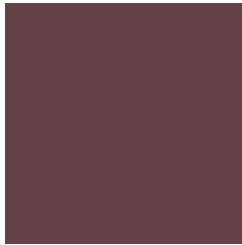


15859757



# Previews

## White Background



This preview shows how the Decimal color 6766920 looks on a white background.

## Color Contrast Check

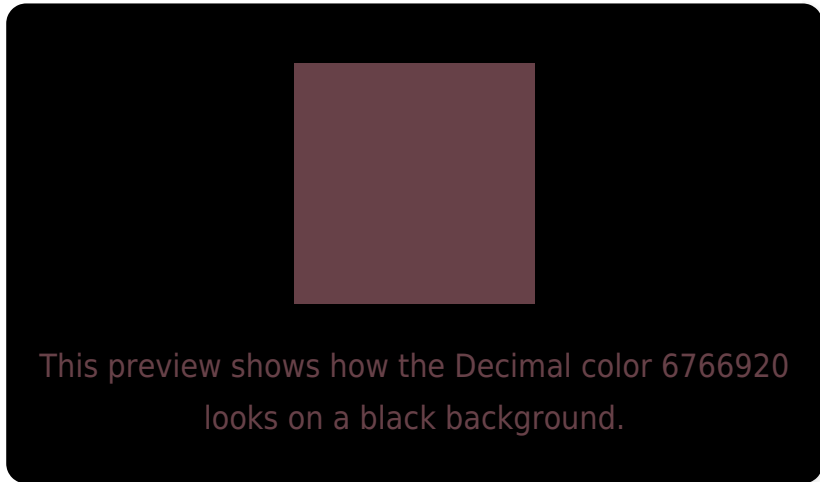
Large Text (above 18pt) WCAG AA ✓ Pass

Any Text WCAG AA ✓ Pass

Large Text (above 18pt) WCAG AAA ✓ Pass

Any Text WCAG AAA ✓ Pass

# Black Background



## Color Contrast Check

Large Text (above 18pt) WCAG AA × Fail

Any Text WCAG AA × Fail

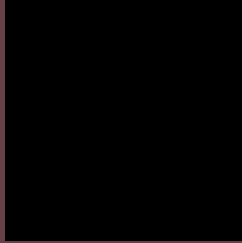
Large Text (above 18pt) WCAG AAA × Fail

Any Text WCAG AAA × Fail

If you want to check with other color combinations, try the [Color Contrast Checker](#).



## Decimal 6766920 Background



This preview shows how black text looks on a background with the Decimal color 6766920.



This preview shows how white text looks on a background with the Decimal color 6766920.

# Color Blindness Simulation

Color vision deficiency is a very complex topic, and I could not describe the different causes any better than Wikipedia does, so if you want to learn more, you should check out their [article about color blindness](#).


## Dichromacy



**Original Color**  
6766920

**Protanopia**  
5065550

**Deuteranopia**  
5589319



**Tritanopia**  
6766918

# Trichromacy



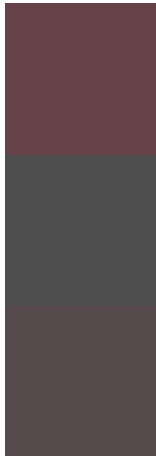
**Original Color**  
6766920

**Protanomaly**  
5654348

**Deuteranomaly**  
6047303

**Tritanomaly**  
6766919

# Monochromacy



**Original Color**  
6766920

**Achromatopsia**  
5066061

**Achromatomaly**  
5654859

# CSS Examples

## Text

The CSS property to change the color of the text to Decimal 6766920 is called "color". The color property can be set on classes, ids or directly on the HTML element.

This example shows how text in the color #674148 looks like.

```
.text, #text, p{  
    color:#674148  
}
```

If you want to add a text shadow in that color use the text-shadow property, you can generate a text shadow directly with our [CSS Text Shadow Generator](#).

Here you see how black text with a 4 pixel #674148 colored shadow looks like.

```
.shadow{ text-shadow: 4px 4px 2px #674148
}
```

## Border

The CSS property to change the border of an element to Decimal 6766920 is called "border". The border property can be set on classes, ids or directly on the HTML element.

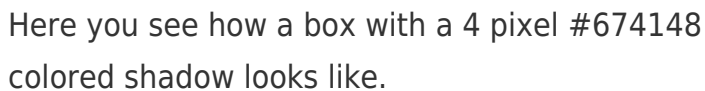
This example shows the color as border, it can be applied via the CSS property "border" or "border-color".

```
.border, #border, table{ border:4px solid
#674148 }
```

If only the border color should be changed use the property `border-color`.

```
.border{ border-color:#674148 }
```

If you want to add a box shadow in that color use:



Here you see how a box with a 4 pixel #674148 colored shadow looks like.

```
.boxshadow{ -moz-box-shadow:4px 4px 4px  
4px #674148; -webkit-box-shadow:4px 4px  
4px 4px #674148; box-shadow:4px 4px 4px  
4px #674148 }
```

# Background

The CSS property to change the background color of an element to Decimal 6766920 is called "background". The background property can be set on classes, ids or directly on the HTML element.

```
.background, #background, body{  
background:#674148 }
```

If only the background color should be changed can be used:

```
.background{ background-color:#674148 }
```

This example shows the color as background, it is applied via the CSS property "background".

To optimize and compress your CSS code, you can use our [online CSS compressor and optimizer](#) based on csstidy. If you want to create a linear or radial gradient as background or border, check our [CSS Gradient Generator](#).



Hey! You found this booklet interesting? Support Converting Colors with the new Membership Option!

The pro membership hides all ads, plus gives you double the colors in the color bucket, and more awesome pro features!

**[Learn more, Memberships starting at \\$2.50/m!](#)**

**Follow me  
on Twitter!**

@ConvertingColor