

Converting Colors

Decimal(6767947)

Have a look what the booklet for
Decimal(6767947) contains.

Decimal(6767947)	3
<i>Conversions</i>	4
<i>Details</i>	6
<i>Harmonies</i>	11
<i>Previews</i>	23
<i>Color Blindness Simulation</i>	26
<i>CSS Examples</i>	29

Color

Decimal(6767947)

Conversions

Conversions Part 1

Format	Color
Hex	67454B
RGB	103, 69, 75
RGB Percent	40%, 27%, 29%
CMY	0.5961, 0.7294, 0.7059
CMYK	0.00, 0.33, 0.27, 0.60
HSL	349°, 20%, 34%
HSV	349°, 33%, 40%
XYZ	8.9916, 7.6478, 7.6589
YIQ	79.8500, 18.3380, 9.0740

Conversions

Conversions Part 2

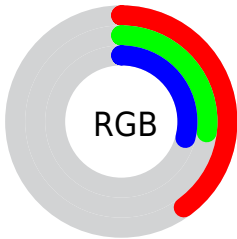
Format	Color
R_{YB}	103, 69, 75
Decimal	6767947
CIE Lab	33.24, 15.59, 2.33
CIE LCh	33, 15.766, 8.516
Yxy	7.6478, 0.3701, 0.3147
Android (android.graphics.Color)	4284958027 (0xFF67454B)
YUV	79.8500, -2.3910, 20.3026
Hunter-Lab	27.6547, 9.6418, 2.9381

Details

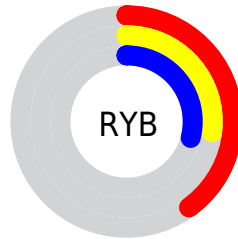
The Decimal color **6767947** is a dark color, and the websafe version is hex **663333**. A complement of this color would be **4548449**, and the grayscale version is **5263440**.

A 20% lighter version of the original color is **10188412**, and **3610911** is the 20% darker color. If you saturate the color by 10%, you get **6765379**, and if you desaturate by 10%, it is **6770515**.

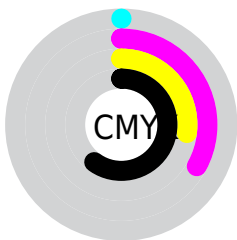
Distribution



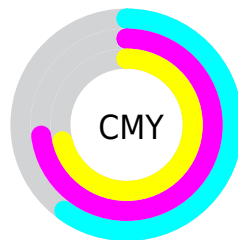
- Red (40%)
- Green (27%)
- Blue (29%)



- Red (40%)
- Yellow (27%)
- Blue (29%)



- Cyan (0%)
- Magenta (33%)
- Yellow (27%)
- Black (60%)



- Cyan (60%)
- Magenta (73%)
- Yellow (71%)

Brightness & Saturation Gradients

These gradients show how the Decimal color 6767947 changes by changing the brightness by 10 percent. The first figure shows a shift by +10% for each color and the second figure -10%.

Similar to the brightness gradients but the following saturation gradients show a change of the Decimal color 6767947 by changing the saturation by 10% instead.



6767947



6767947

16777215



5123636



10188412



3610911



11964309



2293767



13806256



0



15648204



16769512

16776959



6767947



6767947



6765379



6770515

6762554

6773340

6759986

6775908

6757417

6778477

6754593

6781301

6752024

6783870

6750226

6786438

6789007

6791831

Harmonies

Analogous

The Analogous color harmony consists of three colors that are next to each other on the color wheel.



6375000



6767947



6702911

Triad

The Triadic color harmony groups three colors that are evenly spaced from another and form a triangle on the color wheel.



6767947



4608570



3297893

Complementary

The Complementary color scheme is a pair of colors which are on the opposite of each other on the color wheel.



6767947



4548449

Split Complementary

Split-complementary colors differ from the complementary color scheme. The scheme consists of three colors, the original color and two neighbors of the complement color.



2643037



6767947



3626053

Square

The Square scheme is like the rectangle color scheme, but the four colors are evenly spaced on the color wheel.



6767947



5525301



2905425



4476519

Rectangle

The Rectangle color scheme consists of four colors that form a rectangle on the color wheel.



6767947



6441273



2905425



3036003

Sweetspot

The Sweet Spot groups the original color and five complimentary colors.



6767947



8878716



6374759



4537662



12895428



4539717

Same Dimension

The Same Dimension uses a secret algorithm to generate beautiful new colors.



6767947



8868187



6770757



3354159



7536660



15859755

Inverse Universe

The Inverse Universe completely reimagines the original color for something new.



6767947



8868187



4545639



3354159



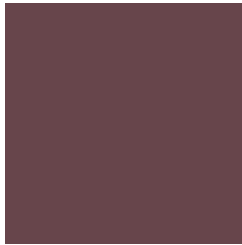
7536660



15859755

Previews

White Background



This preview shows how the Decimal color 6767947 looks on a white background.

Color Contrast Check

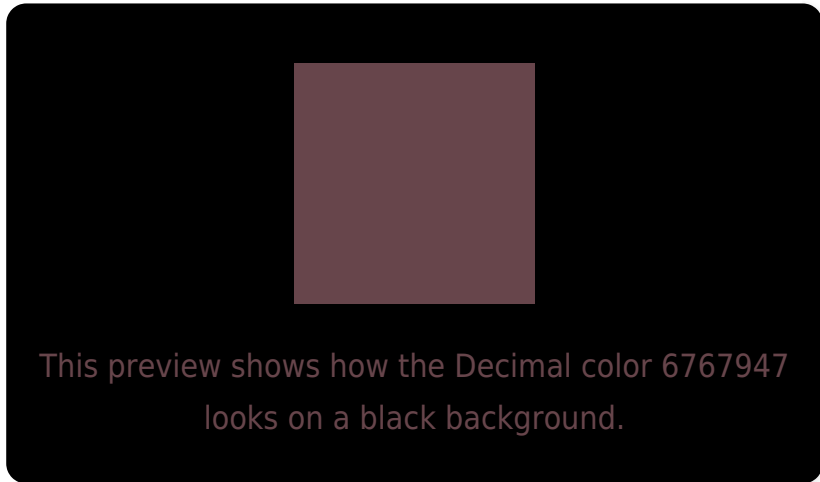
Large Text (above 18pt) WCAG AA ✓ Pass

Any Text WCAG AA ✓ Pass

Large Text (above 18pt) WCAG AAA ✓ Pass

Any Text WCAG AAA ✓ Pass

Black Background



Color Contrast Check

Large Text (above 18pt) WCAG AA × Fail

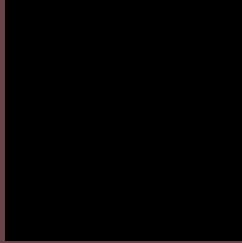
Any Text WCAG AA × Fail

Large Text (above 18pt) WCAG AAA × Fail

Any Text WCAG AAA × Fail

If you want to check with other color combinations, try the [Color Contrast Checker](#).

Decimal 6767947 Background



This preview shows how black text looks on a background with the Decimal color 6767947.



This preview shows how white text looks on a background with the Decimal color 6767947.

Color Blindness Simulation

Color vision deficiency is a very complex topic, and I could not describe the different causes any better than Wikipedia does, so if you want to learn more, you should check out their [article about color blindness](#).

Dichromacy



Original Color
6767947

Protanopia
5197392

Deuteranopia
5786698



Tritanopia
6767946

Trichromacy



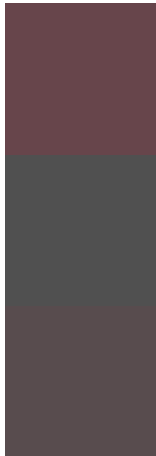
Original Color
6767947

Protanomaly
5786446

Deuteranomaly
6113610

Tritanomaly
6767946

Monochromacy



Original Color
6767947

Achromatopsia
5263440

Achromatomaly
5786702

CSS Examples

Text

The CSS property to change the color of the text to Decimal 6767947 is called "color". The color property can be set on classes, ids or directly on the HTML element.

This example shows how text in the color #67454B looks like.

```
.text, #text, p{  
    color:#67454B  
}
```

If you want to add a text shadow in that color use the text-shadow property, you can generate a text shadow directly with our [CSS Text Shadow Generator](#).

Here you see how black text with a 4 pixel #67454B colored shadow looks like.

```
.shadow{ text-shadow: 4px 4px 2px #67454B
}
```

Border

The CSS property to change the border of an element to Decimal 6767947 is called "border". The border property can be set on classes, ids or directly on the HTML element.

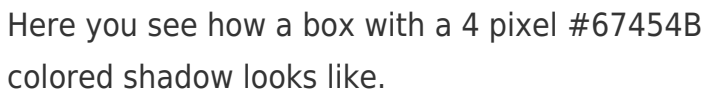
This example shows the color as border, it can be applied via the CSS property "border" or "border-color".

```
.border, #border, table{ border:4px solid
#67454B }
```

If only the border color should be changed use the property `border-color`.

```
.border{ border-color:#67454B }
```

If you want to add a box shadow in that color use:



Here you see how a box with a 4 pixel #67454B colored shadow looks like.

```
.boxshadow{ -moz-box-shadow:4px 4px 4px  
4px #67454B; -webkit-box-shadow:4px 4px  
4px 4px #67454B; box-shadow:4px 4px 4px  
4px #67454B }
```

Background

The CSS property to change the background color of an element to Decimal 6767947 is called "background". The background property can be set on classes, ids or directly on the HTML element.

```
.background, #background, body{  
background:#67454B }
```

If only the background color should be changed can be used:

```
.background{ background-color:#67454B }
```

This example shows the color as background, it is applied via the CSS property "background".

To optimize and compress your CSS code, you can use our [online CSS compressor and optimizer](#) based on csstidy. If you want to create a linear or radial gradient as background or border, check our [CSS Gradient Generator](#).

Hey! You found this booklet interesting? Support Converting Colors with the new Membership Option!

The pro membership hides all ads, plus gives you double the colors in the color bucket, and more awesome pro features!

[Learn more, Memberships starting at \\$2.50/m!](#)

**Follow me
on Twitter!**

@ConvertingColor