

Converting Colors

Decimal(6768722)

Have a look what the booklet for
Decimal(6768722) contains.

Decimal(6768722)	3
<i>Conversions</i>	4
<i>Details</i>	6
<i>Harmonies</i>	11
<i>Previews</i>	23
<i>Color Blindness Simulation</i>	26
<i>CSS Examples</i>	29

Color

Decimal(6768722)

Conversions

Conversions Part 1

Format	Color
Hex	674852
RGB	103, 72, 82
RGB Percent	40%, 28%, 32%
CMY	0.5961, 0.7176, 0.6784
CMYK	0.00, 0.30, 0.20, 0.60
HSL	341°, 18%, 34%
HSV	341°, 30%, 40%
XYZ	9.4339, 8.1275, 9.0542
YIQ	82.4090, 15.2660, 9.6820

Conversions

Conversions Part 2

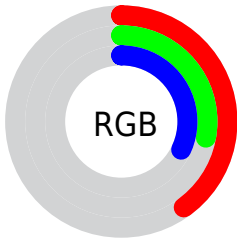
Format	Color
R_{YB}	103, 72, 82
Decimal	6768722
CIE Lab	34.25, 14.92, -0.66
CIE LCh	34, 14.934, 357.456
Yxy	8.1275, 0.3544, 0.3054
Android (android.graphics.Color)	4284958802 (0xFF674852)
YUV	82.4090, -0.2016, 18.0583
Hunter-Lab	28.5088, 9.1774, 1.1260

Details

The Decimal color **6768722** is a dark color, and the websafe version is hex **663333**. A complement of this color would be **4745053**, and the grayscale version is **5395026**.

A 20% lighter version of the original color is **10189187**, and **3611685** is the 20% darker color. If you saturate the color by 10%, you get **6766155**, and if you desaturate by 10%, it is **6771289**.

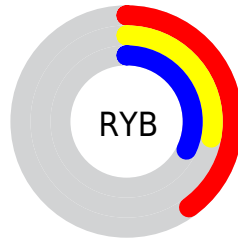
Distribution



Red (40%)

Green (28%)

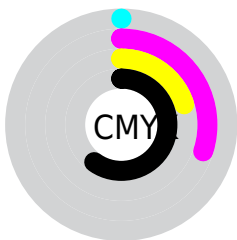
Blue (32%)



Red (40%)

Yellow (28%)

Blue (32%)

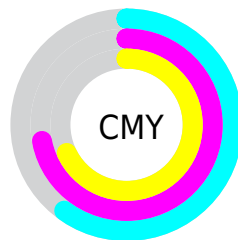


Cyan (0%)

Magenta (30%)

Yellow (20%)

Black (60%)



Cyan (60%)

Magenta (72%)

Yellow (68%)

Brightness & Saturation Gradients

These gradients show how the Decimal color 6768722 changes by changing the brightness by 10 percent. The first figure shows a shift by +10% for each color and the second figure -10%.

Similar to the brightness gradients but the following saturation gradients show a change of the Decimal color 6768722 by changing the saturation by 10% instead.

6768722

6768722

16777215

5189947

10189187

3611685

11965341

2229265

13741496

0

15649236

16770544

6768722

6768722

6766155

6771289

6763332

6774112

6760765

6776679

6758198

6779246

6755631

6782069

6752808

6784636

6750241

6787203

6789770

6792593

Harmonies

Analogous

The Analogous color harmony consists of three colors that are next to each other on the color wheel.



6244957



6768722



6834502

Triad

The Triadic color harmony groups three colors that are evenly spaced from another and form a triangle on the color wheel.



6768722



5133115



3298660

Complementary

The Complementary color scheme is a pair of colors which are on the opposite of each other on the color wheel.



6768722



4745053

Split Complementary

Split-complementary colors differ from the complementary color scheme. The scheme consists of three colors, the original color and two neighbors of the complement color.



2971483



6768722



4216387

Square

The Square scheme is like the rectangle color scheme, but the four colors are evenly spaced on the color wheel.



6768722



5918521



3430223



4215400

Rectangle

The Rectangle color scheme consists of four colors that form a rectangle on the color wheel.



6768722



6703680



3430223



3102306

Sweetspot

The Sweet Spot groups the original color and five complimentary colors.



6768722



8878975



6113383



4537664



12895428



4539717

Same Dimension

The Same Dimension uses a secret algorithm to generate beautiful new colors.



6768722



8869478



6769992



3354160



7536677



15859790

Inverse Universe

The Inverse Universe completely reimagines the original color for something new.



6768722



8869478



4743783



3354160



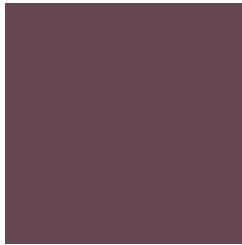
7536677



15859790

Previews

White Background



This preview shows how the Decimal color 6768722 looks on a white background.

Color Contrast Check

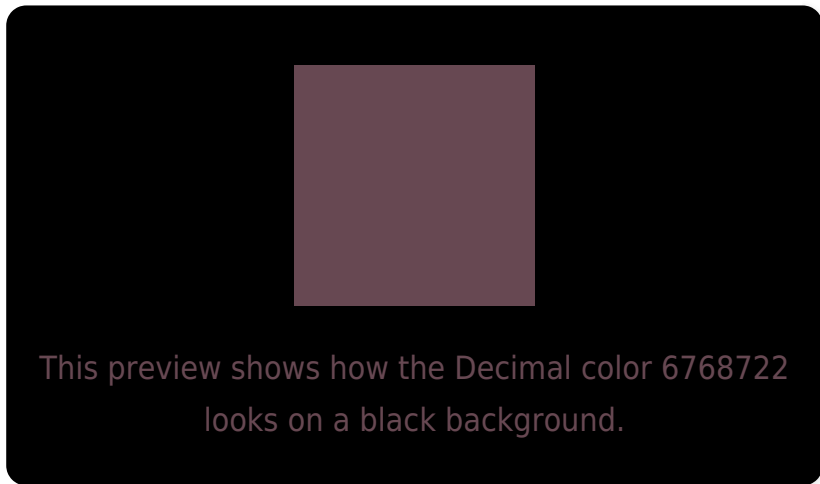
Large Text (above 18pt) WCAG AA ✓ Pass

Any Text WCAG AA ✓ Pass

Large Text (above 18pt) WCAG AAA ✓ Pass

Any Text WCAG AAA ✓ Pass

Black Background



Color Contrast Check

Large Text (above 18pt) WCAG AA × Fail

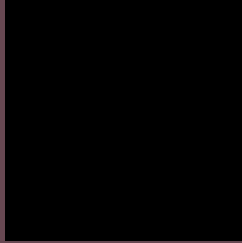
Any Text WCAG AA × Fail

Large Text (above 18pt) WCAG AAA × Fail

Any Text WCAG AAA × Fail

If you want to check with other color combinations, try the [Color Contrast Checker](#).

Decimal 6768722 Background



This preview shows how black text looks on a background with the Decimal color 6768722.



This preview shows how white text looks on a background with the Decimal color 6768722.

Color Blindness Simulation

Color vision deficiency is a very complex topic, and I could not describe the different causes any better than Wikipedia does, so if you want to learn more, you should check out their [article about color blindness](#).


Dichromacy



Original Color
6768722

Protanopia
5263447

Deuteranopia
5787217



Tritanopia
6768974

Trichromacy



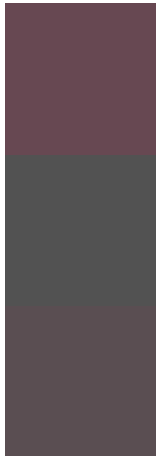
Original Color
6768722

Protanomaly
5786965

Deuteranomaly
6114385

Tritanomaly
6768975

Monochromacy



Original Color
6768722

Achromatopsia
5395026

Achromatomaly
5918290

CSS Examples

Text

The CSS property to change the color of the text to Decimal 6768722 is called "color". The color property can be set on classes, ids or directly on the HTML element.

This example shows how text in the color #674852 looks like.

```
.text, #text, p{  
  color:#674852  
}
```

If you want to add a text shadow in that color use the text-shadow property, you can generate a text shadow directly with our [CSS Text Shadow Generator](#).

Here you see how black text with a 4 pixel #674852 colored shadow looks like.

```
.shadow{ text-shadow: 4px 4px 2px #674852
}
```

Border

The CSS property to change the border of an element to Decimal 6768722 is called "border". The border property can be set on classes, ids or directly on the HTML element.

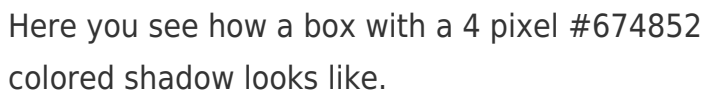
This example shows the color as border, it can be applied via the CSS property "border" or "border-color".

```
.border, #border, table{ border:4px solid
#674852 }
```

If only the border color should be changed use the property `border-color`.

```
.border{ border-color:#674852 }
```

If you want to add a box shadow in that color use:



Here you see how a box with a 4 pixel #674852 colored shadow looks like.

```
.boxshadow{ -moz-box-shadow:4px 4px 4px  
4px #674852; -webkit-box-shadow:4px 4px  
4px 4px #674852; box-shadow:4px 4px 4px  
4px #674852 }
```

Background

The CSS property to change the background color of an element to Decimal 6768722 is called "background". The background property can be set on classes, ids or directly on the HTML element.

```
.background, #background, body{  
background:#674852 }
```

If only the background color should be changed can be used:

```
.background{ background-color:#674852 }
```

This example shows the color as background, it is applied via the CSS property "background".

To optimize and compress your CSS code, you can use our [online CSS compressor and optimizer](#) based on csstidy. If you want to create a linear or radial gradient as background or border, check our [CSS Gradient Generator](#).

Hey! You found this booklet interesting? Support Converting Colors with the new Membership Option!

The pro membership hides all ads, plus gives you double the colors in the color bucket, and more awesome pro features!

[Learn more, Memberships starting at \\$2.50/m!](#)

**Follow me
on Twitter!**

@ConvertingColor