

Converting Colors

Decimal(6965590)

Have a look what the booklet for
Decimal(6965590) contains.

Decimal(6965590)	3
<i>Conversions</i>	4
<i>Details</i>	6
<i>Harmonies</i>	11
<i>Previews</i>	23
<i>Color Blindness Simulation</i>	26
<i>CSS Examples</i>	29

Color

Decimal(6965590)

Conversions

Conversions Part 1

Format	Color
Hex	6A4956
RGB	106, 73, 86
RGB Percent	42%, 29%, 34%
CMY	0.5843, 0.7137, 0.6627
CMYK	0.00, 0.31, 0.19, 0.58
HSL	336°, 18%, 35%
HSV	336°, 31%, 42%
XYZ	10.0061, 8.5011, 9.9176
YIQ	84.3490, 15.4950, 11.0390

Conversions

Conversions Part 2

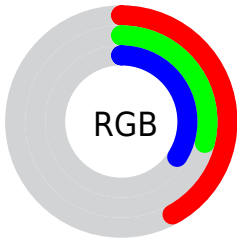
Format	Color
RYB	106, 73, 86
Decimal	6965590
CIELab	35.01, 16.24, -2.05
CIELCh	35, 16.368, 352.818
Yxy	8.5011, 0.3520, 0.2991
Android (android.graphics.Color)	4285155670 (0xFF6A4956)
YUV	84.3490, 0.8139, 18.9879
Hunter-Lab	29.1567, 10.2341, 0.2423

Details

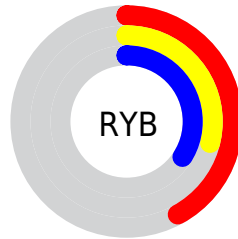
The Decimal color **6965590** is a dark color, and the websafe version is hex **663333**. A complement of this color would be **4811357**, and the grayscale version is **5526612**.

A 20% lighter version of the original color is **10386056**, and **3808553** is the 20% darker color. If you saturate the color by 10%, you get **6962768**, and if you desaturate by 10%, it is **6968412**.

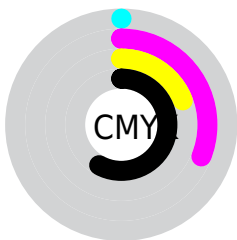
Distribution



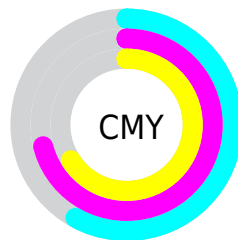
- Red (42%)
- Green (29%)
- Blue (34%)



- Red (42%)
- Yellow (29%)
- Blue (34%)



- Cyan (0%)
- Magenta (31%)
- Yellow (19%)
- Black (58%)



- Cyan (58%)
- Magenta (71%)
- Yellow (66%)

Brightness & Saturation Gradients

These gradients show how the Decimal color 6965590 changes by changing the brightness by 10 percent. The first figure shows a shift by +10% for each color and the second figure -10%.

Similar to the brightness gradients but the following saturation gradients show a change of the Decimal color 6965590 by changing the saturation by 10% instead.



6965590



6965590

16777215



5321279



10386056



3808553



12162210



2360853



14004157



0



15846105



16770805



6965590



6965590



6962768



6968412



6960201



6970979

6957379

6973801

6954812

6976368

6951990

6979190

6949167

6982013

6946858

6984579

6987401

6989968

Harmonies

Analogous

The Analogous color harmony consists of three colors that are next to each other on the color wheel.



6311010



6965590



7162185

Triad

The Triadic color harmony groups three colors that are evenly spaced from another and form a triangle on the color wheel.



6965590



5330234



3037287

Complementary

The Complementary color scheme is a pair of colors which are on the opposite of each other on the color wheel.



6965590



4811357

Split Complementary

Split-complementary colors differ from the complementary color scheme. The scheme consists of three colors, the original color and two neighbors of the complement color.



2840924



6965590



4347970

Square

The Square scheme is like the rectangle color scheme, but the four colors are evenly spaced on the color wheel.



6965590



6246457



3430735



4019308

Rectangle

The Rectangle color scheme consists of four colors that form a rectangle on the color wheel.



6965590



7031617



3430735



2840932

Sweetspot

The Sweet Spot groups the original color and five complimentary colors.



6965590



9076098



6113642



4537664



12895428



4539717

Same Dimension

The Same Dimension uses a secret algorithm to generate beautiful new colors.



6965590



9066347



6966345



3551282



7667758



16056416

Inverse Universe

The Inverse Universe completely reimagines the original color for something new.



6965590



9066347



4810602



3551282



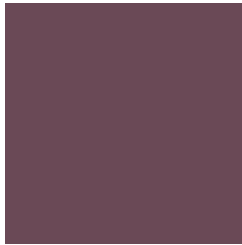
7667758



16056416

Previews

White Background



This preview shows how the Decimal color 6965590 looks on a white background.

Color Contrast Check

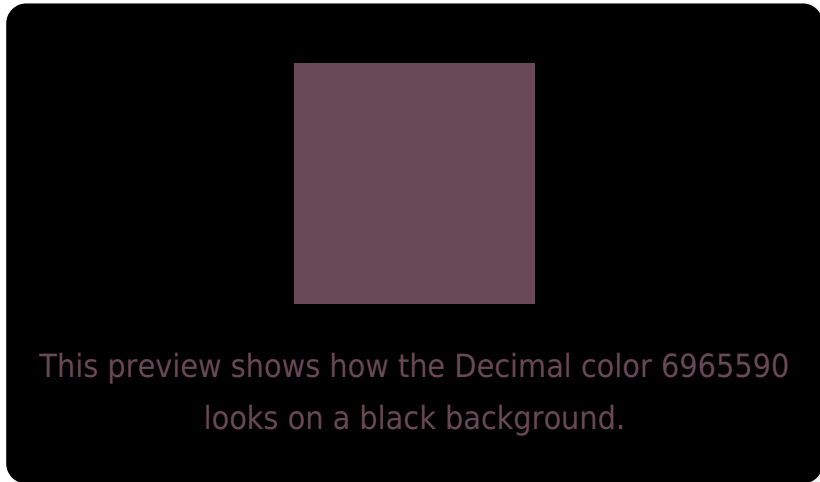
Large Text (above 18pt) WCAG AA ✓ Pass

Any Text WCAG AA ✓ Pass

Large Text (above 18pt) WCAG AAA ✓ Pass

Any Text WCAG AAA ✓ Pass

Black Background



Color Contrast Check

Large Text (above 18pt) WCAG AA × Fail

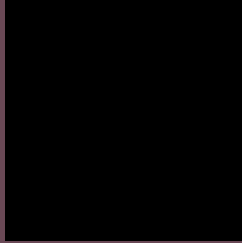
Any Text WCAG AA × Fail

Large Text (above 18pt) WCAG AAA × Fail

Any Text WCAG AAA × Fail

If you want to check with other color combinations, try the [Color Contrast Checker](#).

Decimal 6965590 Background



This preview shows how black text looks on a background with the Decimal color 6965590.



This preview shows how white text looks on a background with the Decimal color 6965590.

Color Blindness Simulation

Color vision deficiency is a very complex topic, and I could not describe the different causes any better than Wikipedia does, so if you want to learn more, you should check out their [article about color blindness](#).

Dichromacy



Original Color
6965590

Protanopia
5329500

Deuteranopia
5918805



Tritanopia
6900304

Trichromacy



Original Color

6965590

Protanomaly

5918554

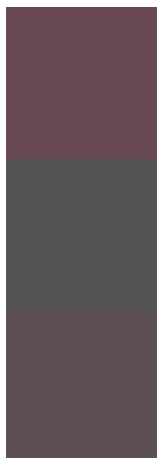
Deuteranomaly

6311253

Tritanomaly

6900306

Monochromacy



Original Color

6965590

Achromatopsia

5526612

Achromatomaly

6049877

CSS Examples

Text

The CSS property to change the color of the text to Decimal 6965590 is called "color". The color property can be set on classes, ids or directly on the HTML element.

This example shows how text in the color #6A4956 looks like.

```
.text, #text, p{  
    color:#6A4956  
}
```

If you want to add a text shadow in that color use the text-shadow property, you can generate a text shadow directly with our [CSS Text Shadow Generator](#).

Here you see how black text with a 4 pixel #6A4956 colored shadow looks like.

```
.shadow{ text-shadow: 4px 4px 2px #6A4956
}
```

Border

The CSS property to change the border of an element to Decimal 6965590 is called "border". The border property can be set on classes, ids or directly on the HTML element.

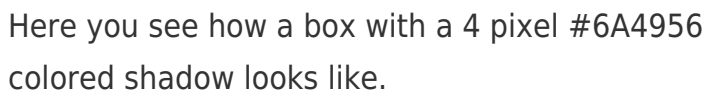
This example shows the color as border, it can be applied via the CSS property "border" or "border-color".

```
.border, #border, table{ border:4px solid
#6A4956 }
```

If only the border color should be changed use the property `border-color`.

```
.border{ border-color:#6A4956 }
```

If you want to add a box shadow in that color use:



Here you see how a box with a 4 pixel #6A4956 colored shadow looks like.

```
.boxshadow{ -moz-box-shadow:4px 4px 4px  
4px #6A4956; -webkit-box-shadow:4px 4px  
4px 4px #6A4956; box-shadow:4px 4px 4px  
4px #6A4956 }
```

Background

The CSS property to change the background color of an element to Decimal 6965590 is called "background". The background property can be set on classes, ids or directly on the HTML element.

```
.background, #background, body{  
background:#6A4956 }
```

If only the background color should be changed can be used:

```
.background{ background-color:#6A4956 }
```

This example shows the color as background, it is applied via the CSS property "background".

To optimize and compress your CSS code, you can use our [online CSS compressor and optimizer](#) based on csstidy. If you want to create a linear or radial gradient as background or border, check our [CSS Gradient Generator](#).

Hey! You found this booklet interesting? Support Converting Colors with the new Membership Option!

The pro membership hides all ads, plus gives you double the colors in the color bucket, and more awesome pro features!

[Learn more, Memberships starting at \\$2.50/m!](#)

**Follow me
on Twitter!**

@ConvertingColor