

Converting Colors

Decimal(7294287)

Have a look what the booklet for
Decimal(7294287) contains.

| | |
|--|----|
| Decimal(7294287) | 3 |
| <i>Conversions</i> | 4 |
| <i>Details</i> | 6 |
| <i>Harmonies</i> | 11 |
| <i>Previews</i> | 23 |
| <i>Color Blindness Simulation</i> | 26 |
| <i>CSS Examples</i> | 29 |

Color

Decimal(7294287)

Conversions

Conversions Part 1

| Format | Color |
|-------------|--------------------------|
| Hex | 6F4D4F |
| RGB | 111, 77, 79 |
| RGB Percent | 44%, 30%, 31% |
| CMY | 0.5647, 0.6980, 0.6902 |
| CMYK | 0.00, 0.31, 0.29, 0.56 |
| HSL | 356°, 18%, 37% |
| HSV | 356°, 31%, 44% |
| XYZ | 10.6207, 9.2518, 8.6231 |
| YIQ | 87.3940, 19.6220, 7.8300 |

Conversions

Conversions Part 2

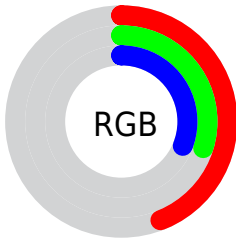
| Format | Color |
|-------------------------------------|------------------------------|
| R_{YB} | 111, 77, 79 |
| Decimal | 7294287 |
| CIE Lab | 36.46, 14.69, 4.57 |
| CIE LCh | 36, 15.382, 17.277 |
| Yxy | 9.2518, 0.3727, 0.3247 |
| Android (android.graphics.Color) | 4285484367 (0xFF6F4D4F) |
| YUV | 87.3940, -4.1382, 20.7025 |
| Hunter-Lab | 30.4167, 9.0981, 4.4830 |

Details

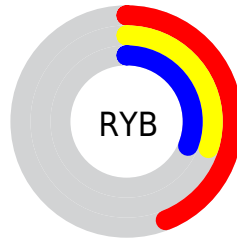
The Decimal color **7294287** is a dark color, and the websafe version is hex **663333**. A complement of this color would be **5074797**, and the grayscale version is **5723991**.

A 20% lighter version of the original color is **10780288**, and **4071459** is the 20% darker color. If you saturate the color by 10%, you get **7291461**, and if you desaturate by 10%, it is **7297113**.

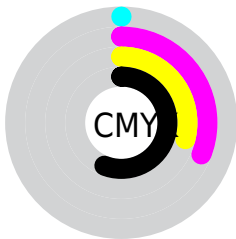
Distribution



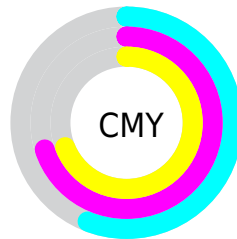
- Red (44%)
- Green (30%)
- Blue (31%)



- Red (44%)
- Yellow (30%)
- Blue (31%)



- Cyan (0%)
- Magenta (31%)
- Yellow (29%)
- Black (56%)



- Cyan (56%)
- Magenta (70%)
- Yellow (69%)

Brightness & Saturation Gradients

These gradients show how the Decimal color 7294287 changes by changing the brightness by 10 percent. The first figure shows a shift by +10% for each color and the second figure -10%.

Similar to the brightness gradients but the following saturation gradients show a change of the Decimal color 7294287 by changing the saturation by 10% instead.



7294287



7294287

16777215



5649976



10780288



4071459



12556442



2624269



14398389



0



16306128



16772077



7294287



7294287



7291461



7297113



7288634



7299940

■ 7285808

■ 7302766

■ 7282981

■ 7305593

■ 7280155

■ 7308675

■ 7277072

■ 7311502

■ 7274503

■ 7314328

■ 7317155

■ 7319981

Harmonies

Analogous

The Analogous color harmony consists of three colors that are next to each other on the color wheel.



7032156



7294287



7098180

Triad

The Triadic color harmony groups three colors that are evenly spaced from another and form a triangle on the color wheel.



7294287



4807237



4217198

Complementary

The Complementary color scheme is a pair of colors which are on the opposite of each other on the color wheel.



7294287



5074797

Split Complementary

Split-complementary colors differ from the complementary color scheme. The scheme consists of three colors, the original color and two neighbors of the complement color.



3365735



7294287



3955792

Square

The Square scheme is like the rectangle color scheme, but the four colors are evenly spaced on the color wheel.



7294287



5723966



3366237



5330029

Rectangle

The Rectangle color scheme consists of four colors that form a rectangle on the color wheel.



7294287



6771263



3366237



3889772

Sweetspot

The Sweet Spot groups the original color and five complimentary colors.



7294287



9536645



7163247



4866626



13224393



4868682

Same Dimension

The Same Dimension uses a secret algorithm to generate beautiful new colors.



7294287



9526367



7298125



3682867



7864327



16187407

Inverse Universe

The Inverse Universe completely reimagines the original color for something new.



7294287



9526367



5070959



3682867



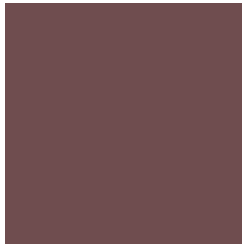
7864327



16187407

Previews

White Background



This preview shows how the Decimal color 7294287 looks on a white background.

Color Contrast Check

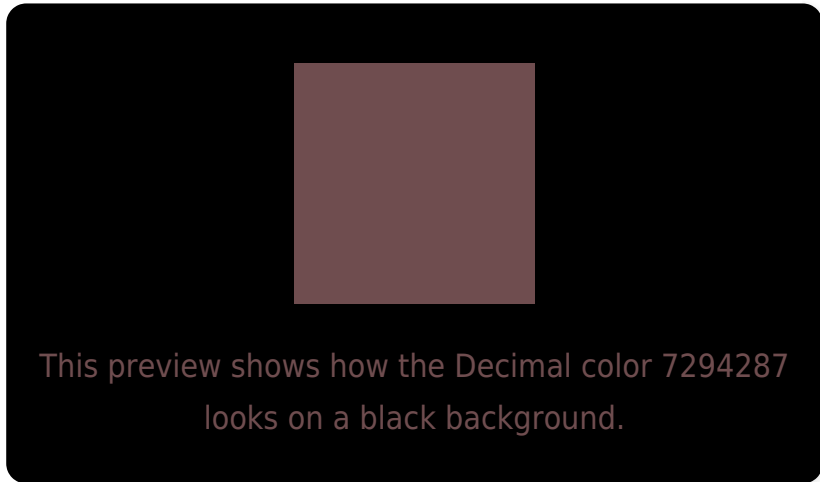
Large Text (above 18pt) WCAG AA ✓ Pass

Any Text WCAG AA ✓ Pass

Large Text (above 18pt) WCAG AAA ✓ Pass

Any Text WCAG AAA ✓ Pass

Black Background



Color Contrast Check

Large Text (above 18pt) WCAG AA × Fail

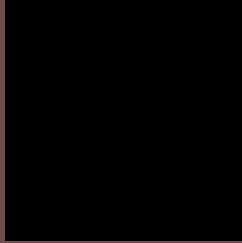
Any Text WCAG AA × Fail

Large Text (above 18pt) WCAG AAA × Fail

Any Text WCAG AAA × Fail

If you want to check with other color combinations, try the [Color Contrast Checker](#).

Decimal 7294287 Background



This preview shows how black text looks on a background with the Decimal color 7294287.



This preview shows how white text looks on a background with the Decimal color 7294287.

Color Blindness Simulation

Color vision deficiency is a very complex topic, and I could not describe the different causes any better than Wikipedia does, so if you want to learn more, you should check out their [article about color blindness](#).

Dichromacy



Original Color

7294287

Protanopia

5789268

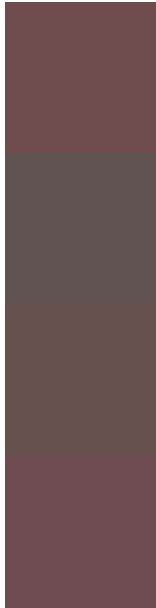
Deuteranopia

6378318



Tritanopia
7294034

Trichromacy



Original Color

7294287

Protanomaly

6312786

Deuteranomaly

6705486

Tritanomaly

7294033

Monochromacy



Original Color

7294287

Achromatopsia

5723991

Achromatomaly

6312788

CSS Examples

Text

The CSS property to change the color of the text to Decimal 7294287 is called "color". The color property can be set on classes, ids or directly on the HTML element.

This example shows how text in the color #6F4D4F looks like.

```
.text, #text, p{  
  color:#6F4D4F  
}
```

If you want to add a text shadow in that color use the text-shadow property, you can generate a text shadow directly with our [CSS Text Shadow Generator](#).

Here you see how black text with a 4 pixel #6F4D4F colored shadow looks like.

```
.shadow{ text-shadow: 4px 4px 2px #6F4D4F
}
```

Border

The CSS property to change the border of an element to Decimal 7294287 is called "border". The border property can be set on classes, ids or directly on the HTML element.

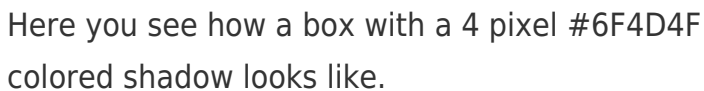
This example shows the color as border, it can be applied via the CSS property "border" or "border-color".

```
.border, #border, table{ border:4px solid
#6F4D4F }
```

If only the border color should be changed use the property `border-color`.

```
.border{ border-color:#6F4D4F }
```

If you want to add a box shadow in that color use:



Here you see how a box with a 4 pixel #6F4D4F colored shadow looks like.

```
.boxshadow{ -moz-box-shadow:4px 4px 4px  
4px #6F4D4F; -webkit-box-shadow:4px 4px  
4px 4px #6F4D4F; box-shadow:4px 4px 4px  
4px #6F4D4F }
```

Background

The CSS property to change the background color of an element to Decimal 7294287 is called "background". The background property can be set on classes, ids or directly on the HTML element.

```
.background, #background, body{  
background:#6F4D4F }
```

If only the background color should be changed can be used:

```
.background{ background-color:#6F4D4F }
```

This example shows the color as background, it is applied via the CSS property "background".

To optimize and compress your CSS code, you can use our [online CSS compressor and optimizer](#) based on csstidy. If you want to create a linear or radial gradient as background or border, check our [CSS Gradient Generator](#).

Hey! You found this booklet interesting? Support Converting Colors with the new Membership Option!

The pro membership hides all ads, plus gives you double the colors in the color bucket, and more awesome pro features!

[Learn more, Memberships starting at \\$2.50/m!](#)

**Follow me
on Twitter!**

@ConvertingColor