

# Converting Colors

Decimal(7954511)

Have a look what the booklet for  
Decimal(7954511) contains.

<b>Decimal(7954511)</b> .....	3
<b><i>Conversions</i></b> .....	4
<b><i>Details</i></b> .....	6
<b><i>Harmonies</i></b> .....	11
<b><i>Previews</i></b> .....	23
<b><i>Color Blindness Simulation</i></b> .....	26
<b><i>CSS Examples</i></b> .....	29

# Color

**Decimal(7954511)**

# Conversions

## Conversions Part 1

<b>Format</b>	<b>Color</b>
Hex	79604F
RGB	121, 96, 79
RGB Percent	47%, 38%, 31%
CMY	0.5255, 0.6235, 0.6902
CMYK	0.00, 0.21, 0.35, 0.53
HSL	24°, 21%, 39%
HSV	24°, 35%, 47%
XYZ	13.4793, 12.9952, 9.1950
YIQ	101.5370, 20.3570, 0.0130

# Conversions

## Conversions Part 2

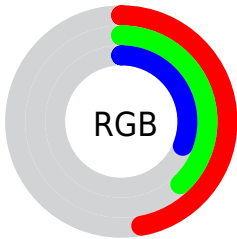
<b>Format</b>	<b>Color</b>
<b>R<sub>YB</sub></b>	121, 108, 79
Decimal	7954511
CIE Lab	42.76, 7.48, 13.56
CIE LCh	43, 15.486, 61.098
Yxy	12.9952, 0.3779, 0.3643
Android (android.graphics.Color)	4286144591 (0xFF79604F)
YUV	101.5370, -11.1107, 17.0691
Hunter-Lab	36.0489, 3.6588, 10.1110

# Details

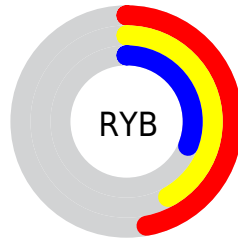
The Decimal color **7954511** is a dark color, and the websafe version is hex **996666**. A complement of this color would be **5204089**, and the grayscale version is **6710886**.

A 20% lighter version of the original color is **11441024**, and **4665890** is the 20% darker color. If you saturate the color by 10%, you get **7952707**, and if you desaturate by 10%, it is **7956315**.

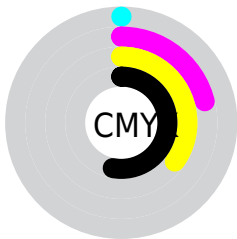
# Distribution



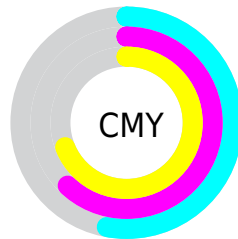
- Red (47%)
- Green (38%)
- Blue (31%)



- Red (47%)
- Yellow (42%)
- Blue (31%)



- Cyan (0%)
- Magenta (21%)
- Yellow (35%)
- Black (53%)



- Cyan (53%)
- Magenta (62%)
- Yellow (69%)

# Brightness & Saturation Gradients

These gradients show how the Decimal color 7954511 changes by changing the brightness by 10 percent. The first figure shows a shift by +10% for each color and the second figure -10%.

Similar to the brightness gradients but the following saturation gradients show a change of the Decimal color 7954511 by changing the saturation by 10% instead.



 7954511

 7954511

16777215

 6309944

 11441024

 4665890

 13282714

 3153165

 15124661

 1704960

 16770513

 0

 16777197

 7954511

 7954511

 7952707

 7956315

 7950903

 7958119

■ 7948843

■ 7960179

■ 7947039

■ 7961983

■ 7945235

■ 7963787

■ 7943430

■ 7965592

■ 7942400

■ 7967396

■ 7969456

■ 7971260

# Harmonies

## Analogous

The Analogous color harmony consists of three colors that are next to each other on the color wheel.



8346968



7954511



7234635

# Triad

The Triadic color harmony groups three colors that are evenly spaced from another and form a triangle on the color wheel.



7954511



4549733



6840955

# Complementary

The Complementary color scheme is a pair of colors which are on the opposite of each other on the color wheel.



7954511



5204089

# Split Complementary

Split-complementary colors differ from the complementary color scheme. The scheme consists of three colors, the original color and two neighbors of the complement color.



5662334



7954511



4287602

# Square

The Square scheme is like the rectangle color scheme, but the four colors are evenly spaced on the color wheel.



7954511



5401432



4680315



7757426

# Rectangle

The Rectangle color scheme consists of four colors that form a rectangle on the color wheel.



7954511



6645581



4680315



6447997



# Sweetspot

The Sweet Spot groups the original color and five complimentary colors.



7954511



10392974



7950184



5196102



13619151



5197647



# Same Dimension

The Same Dimension uses a secret algorithm to generate beautiful new colors.



7954511



10385244



7959887



4012599



8205056



16541184



# Inverse Universe

The Inverse Universe completely reimagines the original color for something new.



5204089



6063006



5198713



3619645



19069

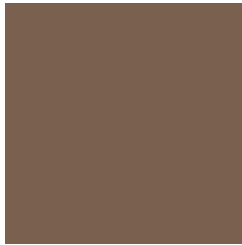


38652



# Previews

## White Background



This preview shows how the Decimal color 7954511 looks on a white background.

## Color Contrast Check

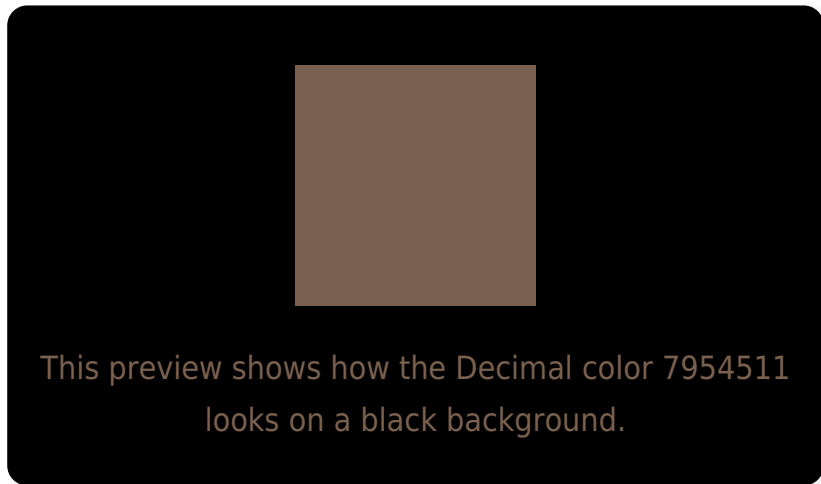
Large Text (above 18pt) WCAG AA ✓ Pass

Any Text WCAG AA ✓ Pass

Large Text (above 18pt) WCAG AAA ✓ Pass

Any Text WCAG AAA × Fail

# Black Background



## Color Contrast Check

Large Text (above 18pt) WCAG AA ✓ Pass

Any Text WCAG AA × Fail

Large Text (above 18pt) WCAG AAA × Fail

Any Text WCAG AAA × Fail

If you want to check with other color combinations, try the [Color Contrast Checker](#).



## Decimal 7954511 Background



This preview shows how black text looks on a background with the Decimal color 7954511.



This preview shows how white text looks on a background with the Decimal color 7954511.

# Color Blindness Simulation

Color vision deficiency is a very complex topic, and I could not describe the different causes any better than Wikipedia does, so if you want to learn more, you should check out their [article about color blindness](#).


## Dichromacy



**Original Color**  
7954511

**Protanopia**  
7038289

**Deuteranopia**  
7758159



**Tritanopia**  
8084836

# Trichromacy



**Original Color**  
7954511

**Protanomaly**  
7365456

**Deuteranomaly**  
7823695

**Tritanomaly**  
8019548

# Monochromacy



**Original Color**  
7954511

**Achromatopsia**  
6710886

**Achromatomaly**  
7169118

# CSS Examples

## Text

The CSS property to change the color of the text to Decimal 7954511 is called "color". The color property can be set on classes, ids or directly on the HTML element.

This example shows how text in the color #79604F looks like.

```
.text, #text, p{  
    color:#79604F  
}
```

If you want to add a text shadow in that color use the text-shadow property, you can generate a text shadow directly with our [CSS Text Shadow Generator](#).

Here you see how black text with a 4 pixel #79604F colored shadow looks like.

```
.shadow{ text-shadow: 4px 4px 2px #79604F
}
```

## Border

The CSS property to change the border of an element to Decimal 7954511 is called "border". The border property can be set on classes, ids or directly on the HTML element.

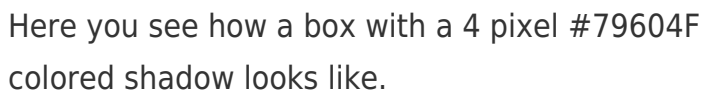
This example shows the color as border, it can be applied via the CSS property "border" or "border-color".

```
.border, #border, table{ border:4px solid
#79604F }
```

If only the border color should be changed use the property `border-color`.

```
.border{ border-color:#79604F }
```

If you want to add a box shadow in that color use:



Here you see how a box with a 4 pixel #79604F colored shadow looks like.

```
.boxshadow{ -moz-box-shadow:4px 4px 4px  
4px #79604F; -webkit-box-shadow:4px 4px  
4px 4px #79604F; box-shadow:4px 4px 4px  
4px #79604F }
```

# Background

The CSS property to change the background color of an element to Decimal 7954511 is called "background". The background property can be set on classes, ids or directly on the HTML element.

```
.background, #background, body{  
background:#79604F }
```

If only the background color should be changed can be used:

```
.background{ background-color:#79604F }
```

This example shows the color as background, it is applied via the CSS property "background".

To optimize and compress your CSS code, you can use our [online CSS compressor and optimizer](#) based on csstidy. If you want to create a linear or radial gradient as background or border, check our [CSS Gradient Generator](#).



Hey! You found this booklet interesting? Support Converting Colors with the new Membership Option!

The pro membership hides all ads, plus gives you double the colors in the color bucket, and more awesome pro features!

**[Learn more, Memberships starting at \\$2.50/m!](#)**

**Follow me  
on Twitter!**

@ConvertingColor