

Converting Colors

Decimal(8019551)

Have a look what the booklet for
Decimal(8019551) contains.

Decimal(8019551)	3
<i>Conversions</i>	4
<i>Details</i>	6
<i>Harmonies</i>	11
<i>Previews</i>	23
<i>Color Blindness Simulation</i>	26
<i>CSS Examples</i>	29

Color

Decimal(8019551)

Conversions

Conversions Part 1

Format	Color
Hex	7A5E5F
RGB	122, 94, 95
RGB Percent	48%, 37%, 37%
CMY	0.5216, 0.6314, 0.6275
CMYK	0.00, 0.23, 0.22, 0.52
HSL	358°, 13%, 42%
HSV	358°, 23%, 48%
XYZ	14.0943, 12.9692, 12.5869
YIQ	102.4860, 16.3670, 6.2470

Conversions

Conversions Part 2

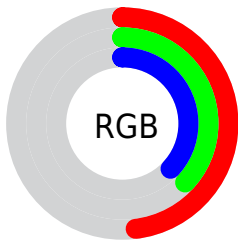
Format	Color
R_{YB}	122, 94, 95
Decimal	8019551
CIE _{Lab}	42.72, 11.56, 3.81
CIE _{LCh}	43, 12.171, 18.232
Yxy	12.9692, 0.3555, 0.3271
Android (android.graphics.Color)	4286209631 (0xFF7A5E5F)
YUV	102.4860, -3.6906, 17.1138
Hunter-Lab	36.0128, 6.8371, 4.4863

Details

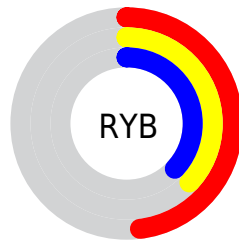
The Decimal color **8019551** is a dark color, and the websafe version is hex **996666**. A complement of this color would be **6191737**, and the grayscale version is **6776679**.

A 20% lighter version of the original color is **11505809**, and **4796465** is the 20% darker color. If you saturate the color by 10%, you get **8016467**, and if you desaturate by 10%, it is **8022635**.

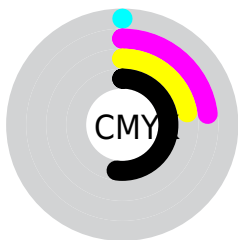
Distribution



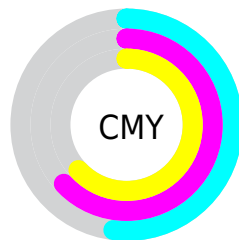
- Red (48%)
- Green (37%)
- Blue (37%)



- Red (48%)
- Yellow (37%)
- Blue (37%)



- Cyan (0%)
- Magenta (23%)
- Yellow (22%)
- Black (52%)



- Cyan (52%)
- Magenta (63%)
- Yellow (63%)

Brightness & Saturation Gradients

These gradients show how the Decimal color 8019551 changes by changing the brightness by 10 percent. The first figure shows a shift by +10% for each color and the second figure -10%.

Similar to the brightness gradients but the following saturation gradients show a change of the Decimal color 8019551 by changing the saturation by 10% instead.

8019551

8019551

16777215

6374983

11505809

4796465

13282220

3218204

15189703

2031873

16769763

0

8019551

8019551

8016467

8022635

8013383

8025719

8010044

8029058

8006960

8032142

8003876

8035226

8000792

8038310

7997709

8041393

7995396

8044733

8047817

Harmonies

Analogous

The Analogous color harmony consists of three colors that are next to each other on the color wheel.



7822953



8019551



7888982

Triad

The Triadic color harmony groups three colors that are evenly spaced from another and form a triangle on the color wheel.



8019551



5990743



5597048

Complementary

The Complementary color scheme is a pair of colors which are on the opposite of each other on the color wheel.



8019551



6191737

Split Complementary

Split-complementary colors differ from the complementary color scheme. The scheme consists of three colors, the original color and two neighbors of the complement color.



5007731



8019551



5270112

Square

The Square scheme is like the rectangle color scheme, but the four colors are evenly spaced on the color wheel.



8019551



6710866



4877163



6448248

Rectangle

The Rectangle color scheme consists of four colors that form a rectangle on the color wheel.



8019551



7561810



4877163



5335159

Sweetspot

The Sweet Spot groups the original color and five complimentary colors.



8019551



10392467



7954042



5196105



13619151



5197647

Same Dimension

The Same Dimension uses a secret algorithm to generate beautiful new colors.



8019551



10383987



8022878



4011831



8192004



16515081

Inverse Universe

The Inverse Universe completely reimagines the original color for something new.



8019551



10383987



6188410



4011831



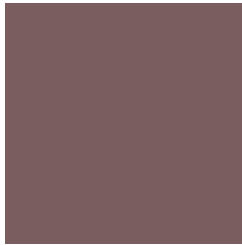
8192004



16515081

Previews

White Background



This preview shows how the Decimal color 8019551 looks on a white background.

Color Contrast Check

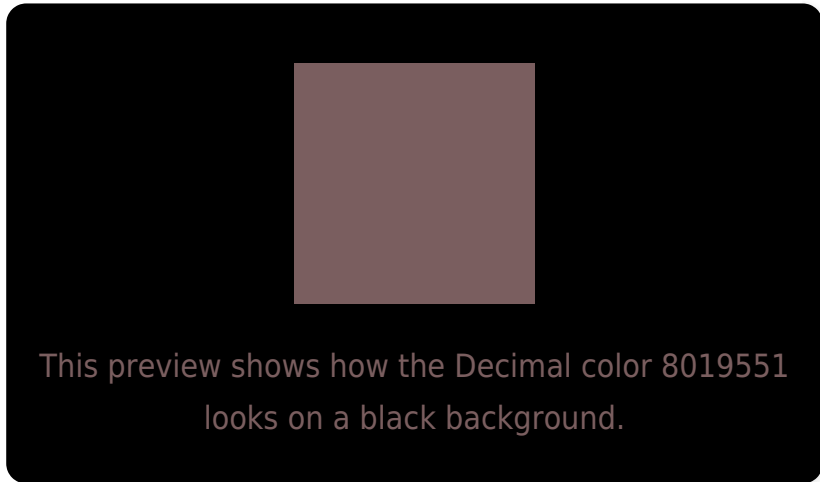
Large Text (above 18pt) WCAG AA ✓ Pass

Any Text WCAG AA ✓ Pass

Large Text (above 18pt) WCAG AAA ✓ Pass

Any Text WCAG AAA × Fail

Black Background



Color Contrast Check

Large Text (above 18pt) WCAG AA ✓ Pass

Any Text WCAG AA × Fail

Large Text (above 18pt) WCAG AAA × Fail

Any Text WCAG AAA × Fail

If you want to check with other color combinations, try the [Color Contrast Checker](#).

Decimal 8019551 Background



This preview shows how black text looks on a background with the Decimal color 8019551.

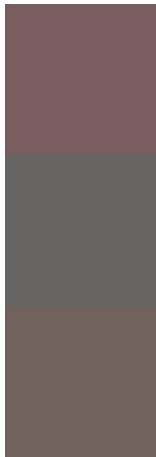


This preview shows how white text looks on a background with the Decimal color 8019551.

Color Blindness Simulation

Color vision deficiency is a very complex topic, and I could not describe the different causes any better than Wikipedia does, so if you want to learn more, you should check out their [article about color blindness](#).


Dichromacy



Original Color
8019551

Protanopia
6776163

Deuteranopia
7430750



Tritanopia
8084836

Trichromacy



Original Color
8019551

Protanomaly
7234146

Deuteranomaly
7627102

Tritanomaly
8084834

Monochromacy



Original Color
8019551

Achromatopsia
6710886

Achromatomaly
7168867

CSS Examples

Text

The CSS property to change the color of the text to Decimal 8019551 is called "color". The color property can be set on classes, ids or directly on the HTML element.

This example shows how text in the color #7A5E5F looks like.

```
.text, #text, p{  
    color:#7A5E5F  
}
```

If you want to add a text shadow in that color use the text-shadow property, you can generate a text shadow directly with our [CSS Text Shadow Generator](#).

Here you see how black text with a 4 pixel #7A5E5F colored shadow looks like.

```
.shadow{ text-shadow: 4px 4px 2px #7A5E5F
}
```

Border

The CSS property to change the border of an element to Decimal 8019551 is called "border". The border property can be set on classes, ids or directly on the HTML element.

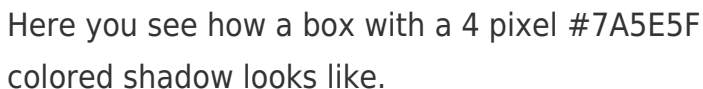
This example shows the color as border, it can be applied via the CSS property "border" or "border-color".

```
.border, #border, table{ border:4px solid
#7A5E5F }
```

If only the border color should be changed use the property `border-color`.

```
.border{ border-color:#7A5E5F }
```

If you want to add a box shadow in that color use:



Here you see how a box with a 4 pixel #7A5E5F colored shadow looks like.

```
.boxshadow{ -moz-box-shadow:4px 4px 4px  
4px #7A5E5F; -webkit-box-shadow:4px 4px  
4px 4px #7A5E5F; box-shadow:4px 4px 4px  
4px #7A5E5F }
```

Background

The CSS property to change the background color of an element to Decimal 8019551 is called "background". The background property can be set on classes, ids or directly on the HTML element.

```
.background, #background, body{  
background:#7A5E5F }
```

If only the background color should be changed can be used:

```
.background{ background-color:#7A5E5F }
```

This example shows the color as background, it is applied via the CSS property "background".

To optimize and compress your CSS code, you can use our [online CSS compressor and optimizer](#) based on csstidy. If you want to create a linear or radial gradient as background or border, check our [CSS Gradient Generator](#).

Hey! You found this booklet interesting? Support Converting Colors with the new Membership Option!

The pro membership hides all ads, plus gives you double the colors in the color bucket, and more awesome pro features!

[Learn more, Memberships starting at \\$2.50/m!](#)

**Follow me
on Twitter!**

@ConvertingColor