

# Converting Colors

Decimal(8021331)

Have a look what the booklet for  
Decimal(8021331) contains.

<b>Decimal(8021331)</b> .....	3
<i><b>Conversions</b></i> .....	4
<i><b>Details</b></i> .....	6
<i><b>Harmonies</b></i> .....	11
<i><b>Previews</b></i> .....	23
<i><b>Color Blindness Simulation</b></i> .....	26
<i><b>CSS Examples</b></i> .....	29

**Color**

**Decimal(8021331)**

# Conversions

## Conversions Part 1

<b>Format</b>	<b>Color</b>
Hex	7A6553
RGB	122, 101, 83
RGB Percent	48%, 40%, 33%
CMY	0.5216, 0.6039, 0.6745
CMYK	0.00, 0.17, 0.32, 0.52
HSL	28°, 19%, 40%
HSV	28°, 32%, 48%
XYZ	14.2411, 14.0695, 10.1487
YIQ	105.2270, 18.2940, -1.1460

# Conversions

## Conversions Part 2

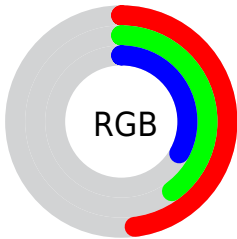
<b>Format</b>	<b>Color</b>
<b>R<sub>YB</sub></b>	122, 116, 83
Decimal	8021331
CIE <sub>Lab</sub>	44.33, 5.51, 13.34
CIE <sub>LCh</sub>	44, 14.435, 67.552
Yxy	14.0695, 0.3703, 0.3658
Android (android.graphics.Color)	4286211411 (0xFF7A6553)
YUV	105.2270, -10.9579, 14.7099
Hunter-Lab	37.5093, 2.1294, 10.2147

# Details

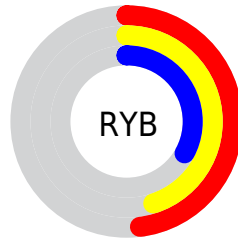
The Decimal color **8021331** is a dark color, and the websafe version is hex **666666**. A complement of this color would be **5466234**, and the grayscale version is **6908265**.

A 20% lighter version of the original color is **11507845**, and **4732454** is the 20% darker color. If you saturate the color by 10%, you get **8019527**, and if you desaturate by 10%, it is **8023135**.

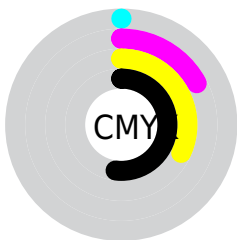
# Distribution



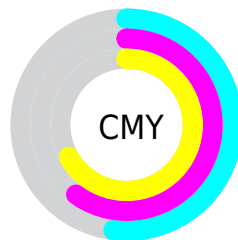
- Red (48%)
- Green (40%)
- Blue (33%)



- Red (48%)
- Yellow (45%)
- Blue (33%)



- Cyan (0%)
- Magenta (17%)
- Yellow (32%)
- Black (52%)



- Cyan (52%)
- Magenta (60%)
- Yellow (67%)

# Brightness & Saturation Gradients

These gradients show how the Decimal color 8021331 changes by changing the brightness by 10 percent. The first figure shows a shift by +10% for each color and the second figure -10%.

Similar to the brightness gradients but the following saturation gradients show a change of the Decimal color 8021331 by changing the saturation by 10% instead.





8021331



8021331

16777215



6376764



11507845



4732454



13349791



3219730



15191738



1837824



16771797



0



16777202



8021331



8021331



8019527



8023135



8017979



8024683

■ 8016174

■ 8026488

■ 8014626

■ 8028036

■ 8012822

■ 8029840

■ 8011274

■ 8031388

■ 8009728

■ 8033192

■ 8034997

■ 8036545

# Harmonies

## Analogous

The Analogous color harmony consists of three colors that are next to each other on the color wheel.



8479323



8021331



7301457

# Triad

The Triadic color harmony groups three colors that are evenly spaced from another and form a triangle on the color wheel.



8021331



4878444



7300476

# Complementary

The Complementary color scheme is a pair of colors which are on the opposite of each other on the color wheel.



8021331



5466234

# Split Complementary

Split-complementary colors differ from the complementary color scheme. The scheme consists of three colors, the original color and two neighbors of the complement color.



6252928



8021331



4747127

# Square

The Square scheme is like the rectangle color scheme, but the four colors are evenly spaced on the color wheel.



8021331



5533535



5270911



8085874

# Rectangle

The Rectangle color scheme consists of four colors that form a rectangle on the color wheel.



8021331



6712147



5270911



6973054



# Sweetspot

The Sweet Spot groups the original color and five complimentary colors.



8021331



10393230



8016744



5196358



13619151



5197647



# Same Dimension

The Same Dimension uses a secret algorithm to generate beautiful new colors.



8021331



10387042



8026195



4012599



8206848



16545024



# Inverse Universe

The Inverse Universe completely reimagines the original color for something new.



5466234



6455966



5461370



3619389



17277

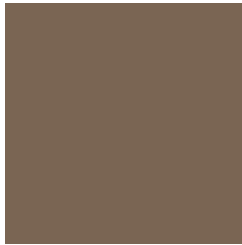


35068



# Previews

## White Background



This preview shows how the Decimal color 8021331 looks on a white background.

## Color Contrast Check

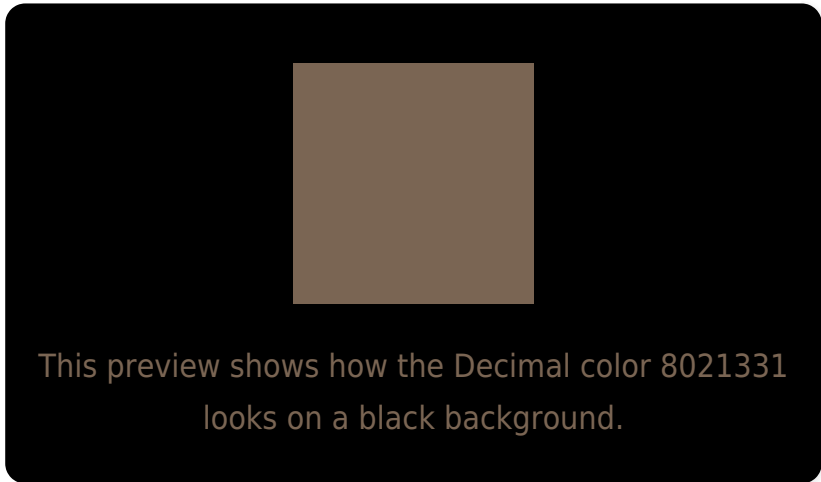
Large Text (above 18pt) WCAG AA ✓ Pass

Any Text WCAG AA ✓ Pass

Large Text (above 18pt) WCAG AAA ✓ Pass

Any Text WCAG AAA × Fail

# Black Background



## Color Contrast Check

Large Text (above 18pt) WCAG AA ✓ Pass

Any Text WCAG AA × Fail

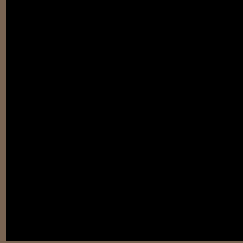
Large Text (above 18pt) WCAG AAA × Fail

Any Text WCAG AAA × Fail

If you want to check with other color combinations, try the [Color Contrast Checker](#).



## Decimal 8021331 Background



This preview shows how black text looks on a background with the Decimal color 8021331.



This preview shows how white text looks on a background with the Decimal color 8021331.

# Color Blindness Simulation

Color vision deficiency is a very complex topic, and I could not describe the different causes any better than Wikipedia does, so if you want to learn more, you should check out their [article about color blindness](#).


## Dichromacy



**Original Color**  
8021331

**Protanopia**  
7301461

**Deuteranopia**  
8086867



**Tritanopia**  
8151657

# Trichromacy



**Original Color**  
8021331

**Protanomaly**  
7563348

**Deuteranomaly**  
8086867

**Tritanomaly**  
8086369

# Monochromacy



**Original Color**  
8021331

**Achromatopsia**  
6908265

**Achromatomaly**  
7301217

# CSS Examples

## Text

The CSS property to change the color of the text to Decimal 8021331 is called "color". The color property can be set on classes, ids or directly on the HTML element.

This example shows how text in the color #7A6553 looks like.

```
.text, #text, p{  
    color:#7A6553  
}
```

If you want to add a text shadow in that color use the text-shadow property, you can generate a text shadow directly with our [CSS Text Shadow Generator](#).

Here you see how black text with a 4 pixel #7A6553 colored shadow looks like.

```
.shadow{ text-shadow: 4px 4px 2px #7A6553
}
```

## Border

The CSS property to change the border of an element to Decimal 8021331 is called "border". The border property can be set on classes, ids or directly on the HTML element.

This example shows the color as border, it can be applied via the CSS property "border" or "border-color".

```
.border, #border, table{ border:4px solid
#7A6553 }
```

If only the border color should be changed use the property `border-color`.

```
.border{ border-color:#7A6553 }
```

If you want to add a box shadow in that color use:

Here you see how a box with a 4 pixel #7A6553 colored shadow looks like.

```
.boxshadow{ -moz-box-shadow:4px 4px 4px  
4px #7A6553; -webkit-box-shadow:4px 4px  
4px 4px #7A6553; box-shadow:4px 4px 4px  
4px #7A6553 }
```

# Background

The CSS property to change the background color of an element to Decimal 8021331 is called "background". The background property can be set on classes, ids or directly on the HTML element.

```
.background, #background, body{  
background:#7A6553 }
```

If only the background color should be changed can be used:

```
.background{ background-color:#7A6553 }
```

This example shows the color as background, it is applied via the CSS property "background".

To optimize and compress your CSS code, you can use our [online CSS compressor and optimizer](#) based on csstidy. If you want to create a linear or radial gradient as background or border, check our [CSS Gradient Generator](#).



Hey! You found this booklet interesting? Support Converting Colors with the new Membership Option!

The pro membership hides all ads, plus gives you double the colors in the color bucket, and more awesome pro features!

**[Learn more, Memberships starting at \\$2.50/m!](#)**

**Follow me  
on Twitter!**

@ConvertingColor