

# Converting Colors

Decimal(8213852)

Have a look what the booklet for  
Decimal(8213852) contains.

<b>Decimal(8213852)</b> .....	3
<i><b>Conversions</b></i> .....	4
<i><b>Details</b></i> .....	6
<i><b>Harmonies</b></i> .....	11
<i><b>Previews</b></i> .....	23
<i><b>Color Blindness Simulation</b></i> .....	26
<i><b>CSS Examples</b></i> .....	29

# Color

**Decimal(8213852)**

# Conversions

## Conversions Part 1

Format	Color
Hex	7D555C
RGB	125, 85, 92
RGB Percent	49%, 33%, 36%
CMY	0.5098, 0.6667, 0.6392
CMYK	0.00, 0.32, 0.26, 0.51
HSL	350°, 19%, 41%
HSV	350°, 32%, 49%
XYZ	13.6377, 11.6297, 11.6512
YIQ	97.7580, 21.5930, 10.6570

# Conversions

## Conversions Part 2

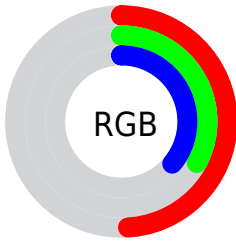
<b>Format</b>	<b>Color</b>
<b>R<sub>YB</sub></b>	125, 85, 92
Decimal	8213852
CIE <sub>Lab</sub>	40.62, 17.70, 2.67
CIE <sub>LCh</sub>	41, 17.903, 8.583
Yxy	11.6297, 0.3694, 0.3150
Android (android.graphics.Color)	4286403932 (0xFF7D555C)
YUV	97.7580, -2.8387, 23.8912
Hunter-Lab	34.1023, 11.7041, 3.6150

# Details

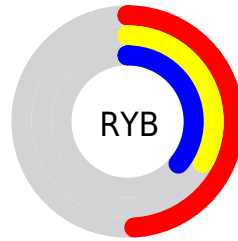
The Decimal color **8213852** is a dark color, and the websafe version is hex **996666**. A complement of this color would be **5602678**, and the grayscale version is **6447714**.

A 20% lighter version of the original color is **11765646**, and **4925230** is the 20% darker color. If you saturate the color by 10%, you get **8210770**, and if you desaturate by 10%, it is **8217190**.

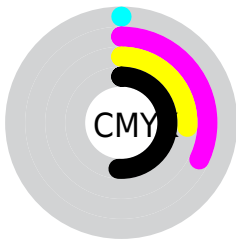
# Distribution



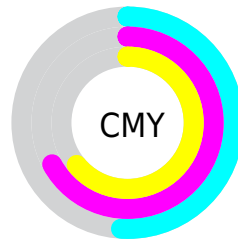
- Red (49%)
- Green (33%)
- Blue (36%)



- Red (49%)
- Yellow (33%)
- Blue (36%)



- Cyan (0%)
- Magenta (32%)
- Yellow (26%)
- Black (51%)



- Cyan (51%)
- Magenta (67%)
- Yellow (64%)

# Brightness & Saturation Gradients

These gradients show how the Decimal color 8213852 changes by changing the brightness by 10 percent. The first figure shows a shift by +10% for each color and the second figure -10%.

Similar to the brightness gradients but the following saturation gradients show a change of the Decimal color 8213852 by changing the saturation by 10% instead.



8213852

8213852

16777215

6503749

11765646

4925230

13541801

3346970

15449540

2162688

16767200

0

16774652

8213852

8213852

8210770

8217190

8207431

8220273

8204349

8223355

8201011

8226693

8197928

8229776

8194590

8233114

8192022

8236196

8239535

8242873

# Harmonies

## Analogous

The Analogous color harmony consists of three colors that are next to each other on the color wheel.



7755371



8213852



8148814

# Triad

The Triadic color harmony groups three colors that are evenly spaced from another and form a triangle on the color wheel.



8213852



5661769



4154491

# Complementary

The Complementary color scheme is a pair of colors which are on the opposite of each other on the color wheel.



8213852



5602678

# Split Complementary

Split-complementary colors differ from the complementary color scheme. The scheme consists of three colors, the original color and two neighbors of the complement color.



3434353



8213852



4548437

# Square

The Square scheme is like the rectangle color scheme, but the four colors are evenly spaced on the color wheel.



8213852



6709315



3631204



5464188

# Rectangle

The Rectangle color scheme consists of four colors that form a rectangle on the color wheel.



8213852



7821895



3631204



3827064



# Sweetspot

The Sweet Spot groups the original color and five complimentary colors.



8213852



10720150



7755133



5392458



13750737



5395026



# Same Dimension

The Same Dimension uses a secret algorithm to generate beautiful new colors.



8213852



10708336



8217173



4208954



8388630



0



# Inverse Universe

The Inverse Universe completely reimagines the original color for something new.



8213852



10708336



5599357



4208954



8388630

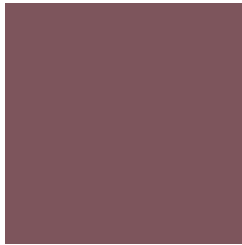


0



# Previews

## White Background



This preview shows how the Decimal color 8213852 looks on a white background.

## Color Contrast Check

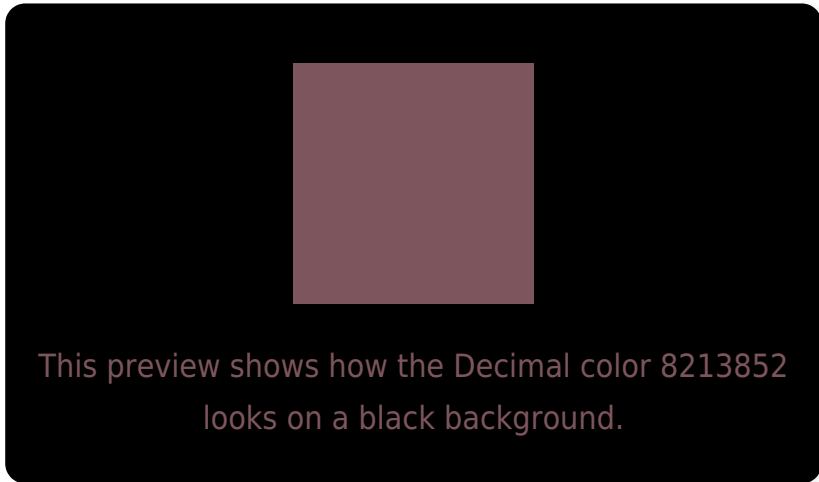
Large Text (above 18pt) WCAG AA ✓ Pass

Any Text WCAG AA ✓ Pass

Large Text (above 18pt) WCAG AAA ✓ Pass

Any Text WCAG AAA × Fail

# Black Background



## Color Contrast Check

Large Text (above 18pt) WCAG AA ✓ Pass

Any Text WCAG AA × Fail

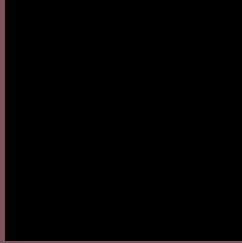
Large Text (above 18pt) WCAG AAA × Fail

Any Text WCAG AAA × Fail

If you want to check with other color combinations, try the [Color Contrast Checker](#).



## Decimal 8213852 Background



This preview shows how black text looks on a background with the Decimal color 8213852.



This preview shows how white text looks on a background with the Decimal color 8213852.

# Color Blindness Simulation

Color vision deficiency is a very complex topic, and I could not describe the different causes any better than Wikipedia does, so if you want to learn more, you should check out their [article about color blindness](#).

## Dichromacy



**Original Color**  
8213852

**Protanopia**  
6381666

**Deuteranopia**  
7036251



# Trichromacy



**Original Color**  
8213852

**Protanomaly**  
7036000

**Deuteranomaly**  
7494235

**Tritanomaly**  
8213852

# Monochromacy



**Original Color**  
8213852

**Achromatopsia**  
6447714

**Achromatomaly**  
7101792

# CSS Examples

## Text

The CSS property to change the color of the text to Decimal 8213852 is called "color". The color property can be set on classes, ids or directly on the HTML element.

This example shows how text in the color #7D555C looks like.

```
.text, #text, p{  
  color:#7D555C  
}
```

If you want to add a text shadow in that color use the text-shadow property, you can generate a text shadow directly with our [CSS Text Shadow Generator](#).

Here you see how black text with a 4 pixel #7D555C colored shadow looks like.

```
.shadow{ text-shadow: 4px 4px 2px #7D555C
}
```

## Border

The CSS property to change the border of an element to Decimal 8213852 is called "border". The border property can be set on classes, ids or directly on the HTML element.

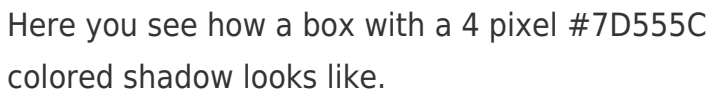
This example shows the color as border, it can be applied via the CSS property "border" or "border-color".

```
.border, #border, table{ border:4px solid
#7D555C }
```

If only the border color should be changed use the property `border-color`.

```
.border{ border-color:#7D555C }
```

If you want to add a box shadow in that color use:



Here you see how a box with a 4 pixel #7D555C colored shadow looks like.

```
.boxshadow{ -moz-box-shadow:4px 4px 4px  
4px #7D555C; -webkit-box-shadow:4px 4px  
4px 4px #7D555C; box-shadow:4px 4px 4px  
4px #7D555C }
```

# Background

The CSS property to change the background color of an element to Decimal 8213852 is called "background". The background property can be set on classes, ids or directly on the HTML element.

```
.background, #background, body{  
background:#7D555C }
```

If only the background color should be changed can be used:

```
.background{ background-color:#7D555C }
```

This example shows the color as background, it is applied via the CSS property "background".

To optimize and compress your CSS code, you can use our [online CSS compressor and optimizer](#) based on csstidy. If you want to create a linear or radial gradient as background or border, check our [CSS Gradient Generator](#).



Hey! You found this booklet interesting? Support Converting Colors with the new Membership Option!

The pro membership hides all ads, plus gives you double the colors in the color bucket, and more awesome pro features!

**[Learn more, Memberships starting at \\$2.50/m!](#)**

**Follow me  
on Twitter!**

@ConvertingColor