

# Converting Colors

Decimal(8340807)

Have a look what the booklet for  
Decimal(8340807) contains.

<b>Decimal(8340807)</b> .....	3
<b><i>Conversions</i></b> .....	4
<b><i>Details</i></b> .....	6
<b><i>Harmonies</i></b> .....	11
<b><i>Previews</i></b> .....	23
<b><i>Color Blindness Simulation</i></b> .....	26
<b><i>CSS Examples</i></b> .....	29

**Color**

**Decimal(8340807)**

# Conversions

## Conversions Part 1

<b>Format</b>	<b>Color</b>
Hex	7F4547
RGB	127, 69, 71
RGB Percent	50%, 27%, 28%
CMY	0.5020, 0.7294, 0.7216
CMYK	0.00, 0.46, 0.44, 0.50
HSL	358°, 30%, 38%
HSV	358°, 46%, 50%
XYZ	12.0178, 9.2232, 7.1081
YIQ	86.5700, 33.9260, 12.9180

# Conversions

## Conversions Part 2

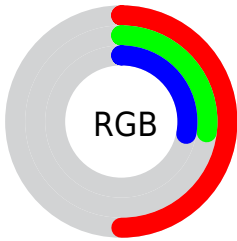
<b>Format</b>	<b>Color</b>
<a href="#">RYB</a>	<a href="#">127, 69, 71</a>
Decimal	<a href="#">8340807</a>
CIELab	<a href="#">36.41, 25.05, 9.83</a>
CIELCh	<a href="#">36, 26.910, 21.431</a>
Yxy	<a href="#">9.2232, 0.4239, 0.3253</a>
Android (android.graphics.Color)	<a href="#">4286530887 (0xFF7F4547)</a>
YUV	<a href="#">86.5700, -7.6760, 35.4571</a>
Hunter-Lab	<a href="#">30.3697, 17.4887, 7.3819</a>

# Details

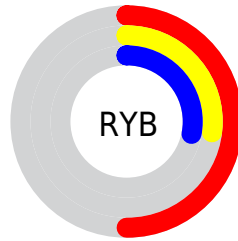
The Decimal color **8340807** is a dark color, and the websafe version is hex **663333**. A complement of this color would be **4554621**, and the grayscale version is **5723991**.

A 20% lighter version of the original color is **11957879**, and **4921116** is the 20% darker color. If you saturate the color by 10%, you get **8337467**, and if you desaturate by 10%, it is **8344147**.

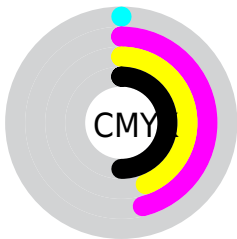
# Distribution



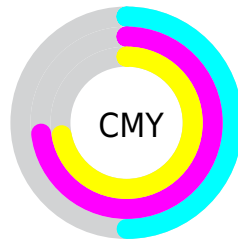
- Red (50%)
- Green (27%)
- Blue (28%)



- Red (50%)
- Yellow (27%)
- Blue (28%)



- Cyan (0%)
- Magenta (46%)
- Yellow (44%)
- Black (50%)



- Cyan (50%)
- Magenta (73%)
- Yellow (72%)

# Brightness & Saturation Gradients

These gradients show how the Decimal color 8340807 changes by changing the brightness by 10 percent. The first figure shows a shift by +10% for each color and the second figure -10%.

Similar to the brightness gradients but the following saturation gradients show a change of the Decimal color 8340807 by changing the saturation by 10% instead.





8340807



8340807

16777215



6630961



11957879



4921116



13799569



3342337



15707051



1376256



16762823



0



16770019



8340807



8340807



8337467



8344147



8334382



8347232

8331042

8350572

8327702

8353912

8324362

8356996

8323076

8360337

8363677

8367017

8370101

# Harmonies

## Analogous

The Analogous color harmony consists of three colors that are next to each other on the color wheel.



8078685



8340807



7883573

# Triad

The Triadic color harmony groups three colors that are evenly spaced from another and form a triangle on the color wheel.



8340807



3890746



2448000

# Complementary

The Complementary color scheme is a pair of colors which are on the opposite of each other on the color wheel.



8340807



4554621

# Split Complementary

Split-complementary colors differ from the complementary color scheme. The scheme consists of three colors, the original color and two neighbors of the complement color.



24439



8340807



1663310

# Square

The Square scheme is like the rectangle color scheme, but the four colors are evenly spaced on the color wheel.



8340807



5527852



24933



5132926

# Rectangle

The Rectangle color scheme consists of four colors that form a rectangle on the color wheel.



8340807



7229485



24933



1137790



# Sweetspot

The Sweet Spot groups the original color and five complimentary colors.



8340807



10915727



8144255



5523014



13948116



5526612



# Same Dimension

The Same Dimension uses a secret algorithm to generate beautiful new colors.



8340807



10898254



8347461



4208954



8388612



0



# Inverse Universe

The Inverse Universe completely reimagines the original color for something new.



8340807



10898254



4547967



4208954



8388612

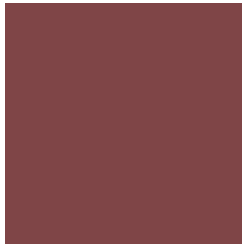


0



# Previews

## White Background



This preview shows how the Decimal color 8340807 looks on a white background.

## Color Contrast Check

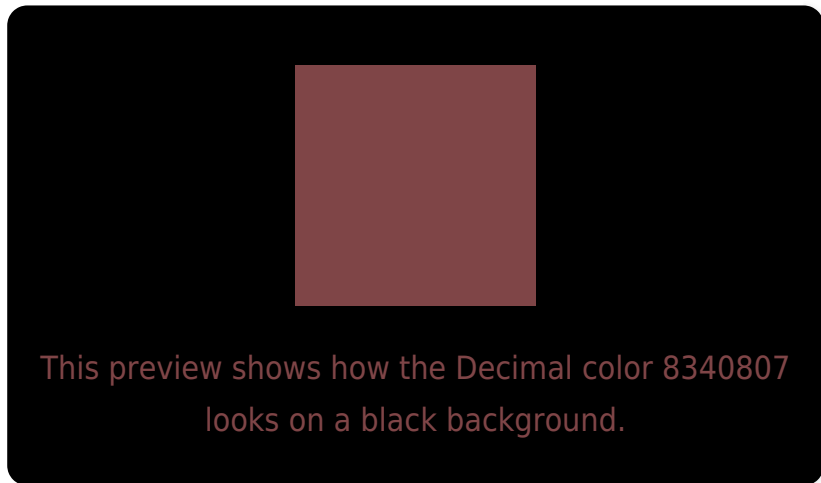
Large Text (above 18pt) WCAG AA ✓ Pass

Any Text WCAG AA ✓ Pass

Large Text (above 18pt) WCAG AAA ✓ Pass

Any Text WCAG AAA ✓ Pass

# Black Background



## Color Contrast Check

Large Text (above 18pt) WCAG AA × Fail

Any Text WCAG AA × Fail

Large Text (above 18pt) WCAG AAA × Fail

Any Text WCAG AAA × Fail

If you want to check with other color combinations, try the [Color Contrast Checker](#).



## Decimal 8340807 Background



This preview shows how black text looks on a background with the Decimal color 8340807.



This preview shows how white text looks on a background with the Decimal color 8340807.

# Color Blindness Simulation

Color vision deficiency is a very complex topic, and I could not describe the different causes any better than Wikipedia does, so if you want to learn more, you should check out their [article about color blindness](#).


## Dichromacy



**Original Color**  
8340807

**Protanopia**  
5854799

**Deuteranopia**  
6574917



**Tritanopia**  
8340810

# Trichromacy



**Original Color**

8340807

**Protanomaly**

6770764

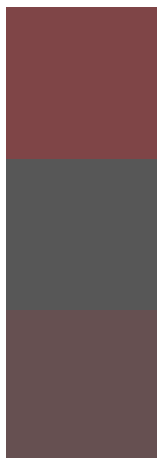
**Deuteranomaly**

7228998

**Tritanomaly**

8340809

# Monochromacy



**Original Color**

8340807

**Achromatopsia**

5723991

**Achromatomaly**

6705233

# CSS Examples

## Text

The CSS property to change the color of the text to Decimal 8340807 is called "color". The color property can be set on classes, ids or directly on the HTML element.

This example shows how text in the color #7F4547 looks like.

```
.text, #text, p{  
  color:#7F4547  
}
```

If you want to add a text shadow in that color use the text-shadow property, you can generate a text shadow directly with our [CSS Text Shadow Generator](#).

Here you see how black text with a 4 pixel #7F4547 colored shadow looks like.

```
.shadow{ text-shadow: 4px 4px 2px #7F4547
}
```

## Border

The CSS property to change the border of an element to Decimal 8340807 is called "border". The border property can be set on classes, ids or directly on the HTML element.

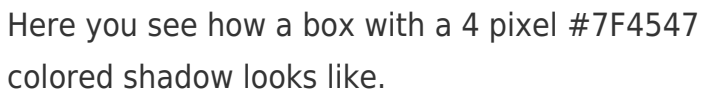
This example shows the color as border, it can be applied via the CSS property "border" or "border-color".

```
.border, #border, table{ border:4px solid
#7F4547 }
```

If only the border color should be changed use the property `border-color`.

```
.border{ border-color:#7F4547 }
```

If you want to add a box shadow in that color use:



Here you see how a box with a 4 pixel #7F4547 colored shadow looks like.

```
.boxshadow{ -moz-box-shadow:4px 4px 4px  
4px #7F4547; -webkit-box-shadow:4px 4px  
4px 4px #7F4547; box-shadow:4px 4px 4px  
4px #7F4547 }
```

# Background

The CSS property to change the background color of an element to Decimal 8340807 is called "background". The background property can be set on classes, ids or directly on the HTML element.

```
.background, #background, body{  
background:#7F4547 }
```

If only the background color should be changed can be used:

```
.background{ background-color:#7F4547 }
```

This example shows the color as background, it is applied via the CSS property "background".

To optimize and compress your CSS code, you can use our [online CSS compressor and optimizer](#) based on csstidy. If you want to create a linear or radial gradient as background or border, check our [CSS Gradient Generator](#).



Hey! You found this booklet interesting? Support Converting Colors with the new Membership Option!

The pro membership hides all ads, plus gives you double the colors in the color bucket, and more awesome pro features!

**[Learn more, Memberships starting at \\$2.50/m!](#)**

**Follow me  
on Twitter!**

@ConvertingColor