

# Converting Colors

Decimal(9071704)

Have a look what the booklet for  
Decimal(9071704) contains.

<b>Decimal(9071704)</b> .....	3
<b><i>Conversions</i></b> .....	4
<b><i>Details</i></b> .....	6
<b><i>Harmonies</i></b> .....	11
<b><i>Previews</i></b> .....	23
<b><i>Color Blindness Simulation</i></b> .....	26
<b><i>CSS Examples</i></b> .....	29

**Color**

**Decimal(9071704)**

# Conversions

## Conversions Part 1

<b>Format</b>	<b>Color</b>
Hex	8A6C58
RGB	138, 108, 88
RGB Percent	54%, 42%, 35%
CMY	0.4588, 0.5765, 0.6549
CMYK	0.00, 0.22, 0.36, 0.46
HSL	24°, 22%, 44%
HSV	24°, 36%, 54%
XYZ	17.6052, 16.8330, 11.5537
YIQ	114.6900, 24.3000, 0.1400

# Conversions

## Conversions Part 2

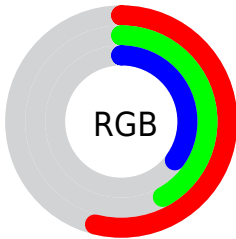
<b>Format</b>	<b>Color</b>
<b>R<sub>YB</sub></b>	138, 121, 88
Decimal	9071704
CIE <sub>Lab</sub>	48.05, 8.94, 15.74
CIE <sub>LCh</sub>	48, 18.107, 60.398
Yxy	16.8330, 0.3828, 0.3660
Android (android.graphics.Color)	4287261784 (0xFF8A6C58)
YUV	114.6900, -13.1582, 20.4429
Hunter-Lab	41.0280, 4.7959, 12.0232

# Details

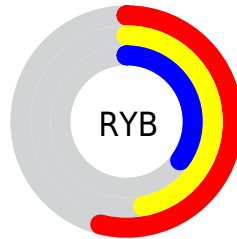
The Decimal color **9071704** is a dark color, and the websafe version is hex **996666**. A complement of this color would be **5797514**, and the grayscale version is **7566195**.

A 20% lighter version of the original color is **12623754**, and **5717290** is the 20% darker color. If you saturate the color by 10%, you get **9069642**, and if you desaturate by 10%, it is **9073766**.

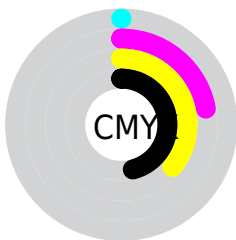
# Distribution



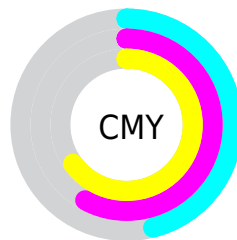
- Red (54%)
- Green (42%)
- Blue (35%)



- Red (54%)
- Yellow (47%)
- Blue (35%)



- Cyan (0%)
- Magenta (22%)
- Yellow (36%)
- Black (46%)



- Cyan (46%)
- Magenta (58%)
- Yellow (65%)

# Brightness & Saturation Gradients

These gradients show how the Decimal color 9071704 changes by changing the brightness by 10 percent. The first figure shows a shift by +10% for each color and the second figure -10%.

Similar to the brightness gradients but the following saturation gradients show a change of the Decimal color 9071704 by changing the saturation by 10% instead.



 9071704

 9071704

16777215

 7361601

 12623754

 5717290

 14531236

 4073238

 16438975

 2626048

 16774107

 65536

 16777208

 0

 9071704

 9071704

 9069642

 9073766

 9067324

 9076084

■ 9065263

■ 9078145

■ 9063201

■ 9080207

■ 9061139

■ 9082269

■ 9058821

■ 9084587

■ 9058048

■ 9086649

■ 9088710

■ 9091028

# Harmonies

## Analogous

The Analogous color harmony consists of three colors that are next to each other on the color wheel.



9529443



9071704



8221012

# Triad

The Triadic color harmony groups three colors that are evenly spaced from another and form a triangle on the color wheel.



9071704



5012338



7696012

# Complementary

The Complementary color scheme is a pair of colors which are on the opposite of each other on the color wheel.



9071704



5797514

# Split Complementary

Split-complementary colors differ from the complementary color scheme. The scheme consists of three colors, the original color and two neighbors of the complement color.



6321040



9071704



4618881

# Square

The Square scheme is like the rectangle color scheme, but the four colors are evenly spaced on the color wheel.



9071704



5994851



5077132



8808833

# Rectangle

The Rectangle color scheme consists of four colors that form a rectangle on the color wheel.



9071704



7500885



5077132



7237775



# Sweetspot

The Sweet Spot groups the original color and five complimentary colors.



9071704



11773855



9066614



5853774



14277081



5855577



# Same Dimension

The Same Dimension uses a secret algorithm to generate beautiful new colors.



9071704



11764838



9078104



4538686



8729856



328192



# Inverse Universe

The Inverse Universe completely reimagines the original color for something new.



5797514



6722739



5791114



4080197



20613

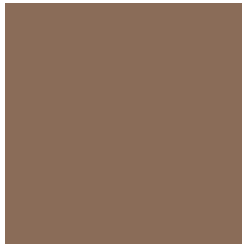


773



# Previews

## White Background



This preview shows how the Decimal color 9071704 looks on a white background.

## Color Contrast Check

Large Text (above 18pt) WCAG AA ✓ Pass

Any Text WCAG AA ✓ Pass

Large Text (above 18pt) WCAG AAA ✓ Pass

Any Text WCAG AAA × Fail

# Black Background



This preview shows how the Decimal color 9071704 looks on a black background.

## Color Contrast Check

Large Text (above 18pt) WCAG AA ✓ Pass

Any Text WCAG AA × Fail

Large Text (above 18pt) WCAG AAA × Fail

Any Text WCAG AAA × Fail

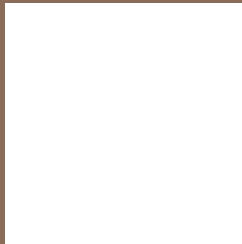
If you want to check with other color combinations, try the [Color Contrast Checker](#).



## Decimal 9071704 Background



This preview shows how black text looks on a background with the Decimal color 9071704.



This preview shows how white text looks on a background with the Decimal color 9071704.

# Color Blindness Simulation

Color vision deficiency is a very complex topic, and I could not describe the different causes any better than Wikipedia does, so if you want to learn more, you should check out their [article about color blindness](#).


## Dichromacy



**Original Color**  
9071704

**Protanopia**  
7959131

**Deuteranopia**  
8810072



**Tritanopia**  
9267569

# Trichromacy



**Original Color**  
9071704

**Protanomaly**  
8351834

**Deuteranomaly**  
8875352

**Tritanomaly**  
9202280

# Monochromacy



**Original Color**  
9071704

**Achromatopsia**  
7566195

**Achromatomaly**  
8089705

# CSS Examples

## Text

The CSS property to change the color of the text to Decimal 9071704 is called "color". The color property can be set on classes, ids or directly on the HTML element.

This example shows how text in the color #8A6C58 looks like.

```
.text, #text, p{  
    color:#8A6C58  
}
```

If you want to add a text shadow in that color use the text-shadow property, you can generate a text shadow directly with our [CSS Text Shadow Generator](#).

Here you see how black text with a 4 pixel #8A6C58 colored shadow looks like.

```
.shadow{ text-shadow: 4px 4px 2px #8A6C58  
}
```

## Border

The CSS property to change the border of an element to Decimal 9071704 is called "border". The border property can be set on classes, ids or directly on the HTML element.

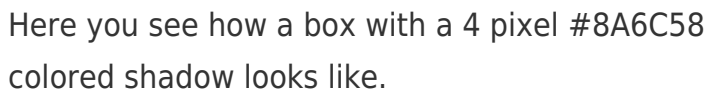
This example shows the color as border, it can be applied via the CSS property "border" or "border-color".

```
.border, #border, table{ border:4px solid  
#8A6C58 }
```

If only the border color should be changed use the property `border-color`.

```
.border{ border-color:#8A6C58 }
```

If you want to add a box shadow in that color use:



Here you see how a box with a 4 pixel #8A6C58 colored shadow looks like.

```
.boxshadow{ -moz-box-shadow:4px 4px 4px  
4px #8A6C58; -webkit-box-shadow:4px 4px  
4px 4px #8A6C58; box-shadow:4px 4px 4px  
4px #8A6C58 }
```

# Background

The CSS property to change the background color of an element to Decimal 9071704 is called "background". The background property can be set on classes, ids or directly on the HTML element.

```
.background, #background, body{  
background:#8A6C58 }
```

If only the background color should be changed can be used:

```
.background{ background-color:#8A6C58 }
```

This example shows the color as background, it is applied via the CSS property "background".

To optimize and compress your CSS code, you can use our [online CSS compressor and optimizer](#) based on csstidy. If you want to create a linear or radial gradient as background or border, check our [CSS Gradient Generator](#).



Hey! You found this booklet interesting? Support Converting Colors with the new Membership Option!

The pro membership hides all ads, plus gives you double the colors in the color bucket, and more awesome pro features!

**[Learn more, Memberships starting at \\$2.50/m!](#)**

**Follow me  
on Twitter!**

@ConvertingColor