

# Converting Colors

Decimal(9333842)

Have a look what the booklet for  
Decimal(9333842) contains.

<b>Decimal(9333842)</b> .....	3
<i><b>Conversions</b></i> .....	4
<i><b>Details</b></i> .....	6
<i><b>Harmonies</b></i> .....	11
<i><b>Previews</b></i> .....	23
<i><b>Color Blindness Simulation</b></i> .....	26
<i><b>CSS Examples</b></i> .....	29

**Color**

**Decimal(9333842)**

# Conversions

## Conversions Part 1

<b>Format</b>	<b>Color</b>
Hex	8E6C52
RGB	142, 108, 82
RGB Percent	56%, 42%, 32%
CMY	0.4431, 0.5765, 0.6784
CMYK	0.00, 0.24, 0.42, 0.44
HSL	26°, 27%, 44%
HSV	26°, 42%, 56%
XYZ	18.0409, 17.0851, 10.3295
YIQ	115.2020, 28.6100, -0.8780

# Conversions

## Conversions Part 2

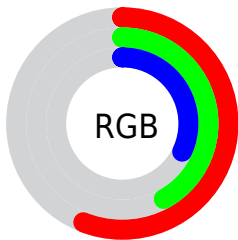
<b>Format</b>	<b>Color</b>
<b>R<sub>YB</sub></b>	142, 128, 82
Decimal	9333842
CIE Lab	48.37, 9.90, 19.76
CIE LCh	48, 22.105, 63.380
Yxy	17.0851, 0.3969, 0.3759
Android (android.graphics.Color)	4287523922 (0xFF8E6C52)
YUV	115.2020, -16.3686, 23.5018
Hunter-Lab	41.3341, 5.5742, 14.1171

# Details

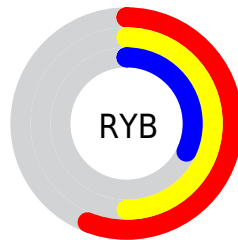
The Decimal color **9333842** is a dark color, and the websafe version is hex **996666**. A complement of this color would be **5403790**, and the grayscale version is **7566195**.

A 20% lighter version of the original color is **12951428**, and **5913893** is the 20% darker color. If you saturate the color by 10%, you get **9331780**, and if you desaturate by 10%, it is **9335904**.

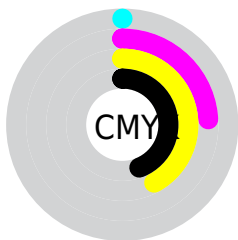
# Distribution



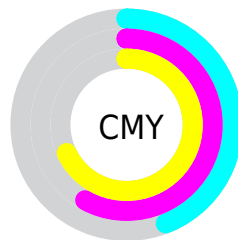
- Red (56%)
- Green (42%)
- Blue (32%)



- Red (56%)
- Yellow (50%)
- Blue (32%)



- Cyan (0%)
- Magenta (24%)
- Yellow (42%)
- Black (44%)



- Cyan (44%)
- Magenta (58%)
- Yellow (68%)

# Brightness & Saturation Gradients

These gradients show how the Decimal color 9333842 changes by changing the brightness by 10 percent. The first figure shows a shift by +10% for each color and the second figure -10%.

Similar to the brightness gradients but the following saturation gradients show a change of the Decimal color 9333842 by changing the saturation by 10% instead.





9333842



9333842

16777215



7623739



12951428



5913893



14793374



4269840



16766649



2757120



16774100



458752



16777201



0



9333842



9333842



9331780



9335904



9329718



9337966

■ 9327655

■ 9340029

■ 9325593

■ 9342091

■ 9323531

■ 9344153

■ 9321984

■ 9346215

■ 9348277

■ 9350340

■ 9352402

# Harmonies

## Analogous

The Analogous color harmony consists of three colors that are next to each other on the color wheel.



9922399



9333842



8286797

# Triad

The Triadic color harmony groups three colors that are evenly spaced from another and form a triangle on the color wheel.



9333842



4226420



7892370

# Complementary

The Complementary color scheme is a pair of colors which are on the opposite of each other on the color wheel.



9333842



5403790

# Split Complementary

Split-complementary colors differ from the complementary color scheme. The scheme consists of three colors, the original color and two neighbors of the complement color.



6190232



9333842



3636359

# Square

The Square scheme is like the rectangle color scheme, but the four colors are evenly spaced on the color wheel.



9333842



5536866



4487572



9267332

# Rectangle

The Rectangle color scheme consists of four colors that form a rectangle on the color wheel.



9333842



7435856



4487572



7368853



# Sweetspot

The Sweet Spot groups the original color and five complimentary colors.



9333842



12102304



9327220



6050637



14408667



6052956



# Same Dimension

The Same Dimension uses a secret algorithm to generate beautiful new colors.



9333842



12092250



9341266



4670272



8862464



525056



# Inverse Universe

The Inverse Universe completely reimagines the original color for something new.



5403790



5935032



5396110



4211783



19847

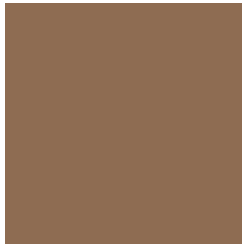


1032



# Previews

## White Background



This preview shows how the Decimal color 9333842 looks on a white background.

## Color Contrast Check

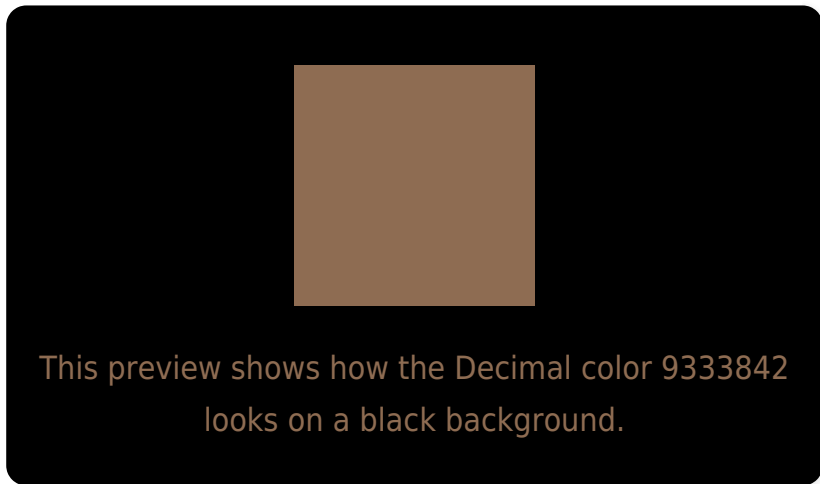
Large Text (above 18pt) WCAG AA ✓ Pass

Any Text WCAG AA ✓ Pass

Large Text (above 18pt) WCAG AAA ✓ Pass

Any Text WCAG AAA × Fail

# Black Background



## Color Contrast Check

Large Text (above 18pt) WCAG AA ✓ Pass

Any Text WCAG AA × Fail

Large Text (above 18pt) WCAG AAA × Fail

Any Text WCAG AAA × Fail

If you want to check with other color combinations, try the [Color Contrast Checker](#).



## Decimal 9333842 Background



This preview shows how black text looks on a background with the Decimal color 9333842.



This preview shows how white text looks on a background with the Decimal color 9333842.

# Color Blindness Simulation

Color vision deficiency is a very complex topic, and I could not describe the different causes any better than Wikipedia does, so if you want to learn more, you should check out their [article about color blindness](#).


## Dichromacy



**Original Color**  
9333842

**Protanopia**  
8090453

**Deuteranopia**  
9006674



**Tritanopia**  
9529456

# Trichromacy



**Original Color**  
9333842

**Protanomaly**  
8548436

**Deuteranomaly**  
9137490

**Tritanomaly**  
9464165

# Monochromacy



**Original Color**  
9333842

**Achromatopsia**  
7566195

**Achromatomaly**  
8220775

# CSS Examples

## Text

The CSS property to change the color of the text to Decimal 9333842 is called "color". The color property can be set on classes, ids or directly on the HTML element.

This example shows how text in the color #8E6C52 looks like.

```
.text, #text, p{  
  color:#8E6C52  
}
```

If you want to add a text shadow in that color use the text-shadow property, you can generate a text shadow directly with our [CSS Text Shadow Generator](#).

Here you see how black text with a 4 pixel #8E6C52 colored shadow looks like.

```
.shadow{ text-shadow: 4px 4px 2px #8E6C52
}
```

## Border

The CSS property to change the border of an element to Decimal 9333842 is called "border". The border property can be set on classes, ids or directly on the HTML element.

This example shows the color as border, it can be applied via the CSS property "border" or "border-color".

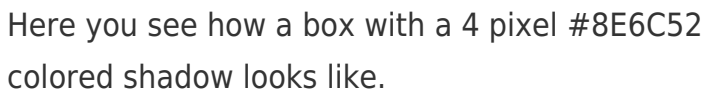
```
.border, #border, table{ border:4px solid
#8E6C52 }
```

If only the border color should be changed use the property `border-color`.

```
.border{ border-color:#8E6C52 }
```

If you want to add a box shadow in that color use:

Here you see how a box with a 4 pixel #8E6C52 colored shadow looks like.



```
.boxshadow{ -moz-box-shadow:4px 4px 4px  
4px #8E6C52; -webkit-box-shadow:4px 4px  
4px 4px #8E6C52; box-shadow:4px 4px 4px  
4px #8E6C52 }
```

# Background

The CSS property to change the background color of an element to Decimal 9333842 is called "background". The background property can be set on classes, ids or directly on the HTML element.

```
.background, #background, body{  
background:#8E6C52 }
```

If only the background color should be changed can be used:

```
.background{ background-color:#8E6C52 }
```

This example shows the color as background, it is applied via the CSS property "background".

To optimize and compress your CSS code, you can use our [online CSS compressor and optimizer](#) based on csstidy. If you want to create a linear or radial gradient as background or border, check our [CSS Gradient Generator](#).



Hey! You found this booklet interesting? Support Converting Colors with the new Membership Option!

The pro membership hides all ads, plus gives you double the colors in the color bucket, and more awesome pro features!

**[Learn more, Memberships starting at \\$2.50/m!](#)**

**Follow me  
on Twitter!**

@ConvertingColor