

# Converting Colors

Decimal(9401436)

Have a look what the booklet for  
Decimal(9401436) contains.

<b>Decimal(9401436)</b> .....	3
<b><i>Conversions</i></b> .....	4
<b><i>Details</i></b> .....	6
<b><i>Harmonies</i></b> .....	11
<b><i>Previews</i></b> .....	23
<b><i>Color Blindness Simulation</i></b> .....	26
<b><i>CSS Examples</i></b> .....	29

**Color**

**Decimal(9401436)**

# Conversions

## Conversions Part 1

<b>Format</b>	<b>Color</b>
Hex	8F745C
RGB	143, 116, 92
RGB Percent	56%, 45%, 36%
CMY	0.4392, 0.5451, 0.6392
CMYK	0.00, 0.19, 0.36, 0.44
HSL	28°, 22%, 46%
HSV	28°, 36%, 56%
XYZ	19.5049, 19.1031, 12.7845
YIQ	121.3370, 23.7960, -1.7400

# Conversions

## Conversions Part 2

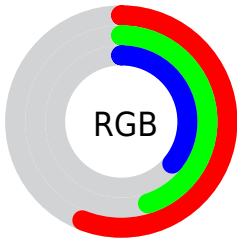
<b>Format</b>	<b>Color</b>
<b>R<sub>YB</sub></b>	143, 137, 92
Decimal	9401436
CIE <sub>Lab</sub>	50.81, 6.96, 17.25
CIE <sub>LCh</sub>	51, 18.600, 68.038
Yxy	19.1031, 0.3795, 0.3717
Android (android.graphics.Color)	4287591516 (0xFF8F745C)
YUV	121.3370, -14.4631, 18.9985
Hunter-Lab	43.7071, 3.1704, 13.2525

# Details

The Decimal color **9401436** is a dark color, and the websafe version is hex **996666**. A complement of this color would be **6059919**, and the grayscale version is **7960953**.

A 20% lighter version of the original color is **13019278**, and **5981230** is the 20% darker color. If you saturate the color by 10%, you get **9399374**, and if you desaturate by 10%, it is **9403498**.

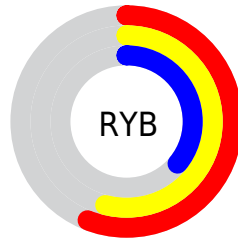
# Distribution



Red (56%)

Green (45%)

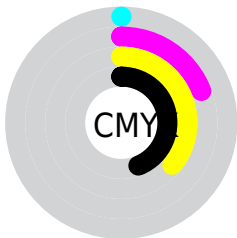
Blue (36%)



Red (56%)

Yellow (54%)

Blue (36%)

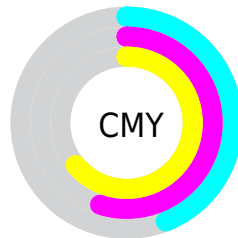


Cyan (0%)

Magenta (19%)

Yellow (36%)

Black (44%)



Cyan (44%)

Magenta (55%)

Yellow (64%)

# Brightness & Saturation Gradients

These gradients show how the Decimal color 9401436 changes by changing the brightness by 10 percent. The first figure shows a shift by +10% for each color and the second figure -10%.

Similar to the brightness gradients but the following saturation gradients show a change of the Decimal color 9401436 by changing the saturation by 10% instead.





9401436



9401436

16777215



7691076



13019278



5981230



14861225



4402713



16768964



2955520



16776416



1310720

16777213



0



9401436



9401436



9399374



9403498



9397567



9405305

■ 9395505

■ 9407367

■ 9393699

■ 9409173

■ 9391636

■ 9411235

■ 9389830

■ 9413042

■ 9388800

■ 9415104

■ 9417166

■ 9418973

# Harmonies

## Analogous

The Analogous color harmony consists of three colors that are next to each other on the color wheel.



9989990



9401436



8419674

# Triad

The Triadic color harmony groups three colors that are evenly spaced from another and form a triangle on the color wheel.



9401436



5210749



8483730

# Complementary

The Complementary color scheme is a pair of colors which are on the opposite of each other on the color wheel.



9401436



6059919

# Split Complementary

Split-complementary colors differ from the complementary color scheme. The scheme consists of three colors, the original color and two neighbors of the complement color.



7109016



9401436



5013900

# Square

The Square scheme is like the rectangle color scheme, but the four colors are evenly spaced on the color wheel.



9401436



6127981



5734038



9531269

# Rectangle

The Rectangle color scheme consists of four colors that form a rectangle on the color wheel.



9401436



7699805



5734038



8025493



# Sweetspot

The Sweet Spot groups the original color and five complimentary colors.



9401436



12234662



9395319



6182994



14606046



6184542



# Same Dimension

The Same Dimension uses a secret algorithm to generate beautiful new colors.



9401436



12226666



9407836



4670528



8863744



525312



# Inverse Universe

The Inverse Universe completely reimagines the original color for something new.



6059919



6984890



6053519



4211783



18567

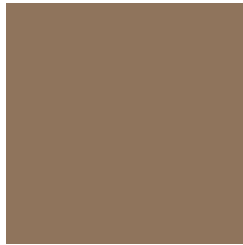


1032



# Previews

## White Background



This preview shows how the Decimal color 9401436 looks on a white background.

## Color Contrast Check

Large Text (above 18pt) WCAG AA ✓ Pass

Any Text WCAG AA × Fail

Large Text (above 18pt) WCAG AAA × Fail

Any Text WCAG AAA × Fail

# Black Background



This preview shows how the Decimal color 9401436 looks on a black background.

## Color Contrast Check

Large Text (above 18pt) WCAG AA ✓ Pass

Any Text WCAG AA ✓ Pass

Large Text (above 18pt) WCAG AAA ✓ Pass

Any Text WCAG AAA × Fail

If you want to check with other color combinations, try the [Color Contrast Checker](#).



## Decimal 9401436 Background



This preview shows how black text looks on a background with the Decimal color 9401436.



This preview shows how white text looks on a background with the Decimal color 9401436.

# Color Blindness Simulation

Color vision deficiency is a very complex topic, and I could not describe the different causes any better than Wikipedia does, so if you want to learn more, you should check out their [article about color blindness](#).

## Dichromacy



**Original Color**  
9401436

**Protanopia**  
8485214

**Deuteranopia**  
9401436



**Tritanopia**  
9597049

# Trichromacy



**Original Color**  
9401436

**Protanomaly**  
8812381

**Deuteranomaly**  
9401436

**Tritanomaly**  
9531758

# Monochromacy



**Original Color**  
9401436

**Achromatopsia**  
7960953

**Achromatomaly**  
8484718

# CSS Examples

## Text

The CSS property to change the color of the text to Decimal 9401436 is called "color". The color property can be set on classes, ids or directly on the HTML element.

This example shows how text in the color #8F745C looks like.

```
.text, #text, p{  
    color:#8F745C  
}
```

If you want to add a text shadow in that color use the text-shadow property, you can generate a text shadow directly with our [CSS Text Shadow Generator](#).

Here you see how black text with a 4 pixel #8F745C colored shadow looks like.

```
.shadow{ text-shadow: 4px 4px 2px #8F745C
}
```

## Border

The CSS property to change the border of an element to Decimal 9401436 is called "border". The border property can be set on classes, ids or directly on the HTML element.

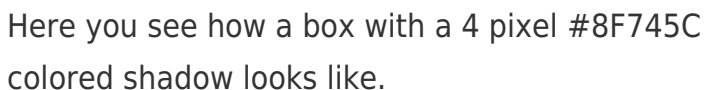
This example shows the color as border, it can be applied via the CSS property "border" or "border-color".

```
.border, #border, table{ border:4px solid
#8F745C }
```

If only the border color should be changed use the property `border-color`.

```
.border{ border-color:#8F745C }
```

If you want to add a box shadow in that color use:



Here you see how a box with a 4 pixel #8F745C colored shadow looks like.

```
.boxshadow{ -moz-box-shadow:4px 4px 4px  
4px #8F745C; -webkit-box-shadow:4px 4px  
4px 4px #8F745C; box-shadow:4px 4px 4px  
4px #8F745C }
```

# Background

The CSS property to change the background color of an element to Decimal 9401436 is called "background". The background property can be set on classes, ids or directly on the HTML element.

```
.background, #background, body{  
background:#8F745C }
```

If only the background color should be changed can be used:

```
.background{ background-color:#8F745C }
```

This example shows the color as background, it is applied via the CSS property "background".

To optimize and compress your CSS code, you can use our [online CSS compressor and optimizer](#) based on csstidy. If you want to create a linear or radial gradient as background or border, check our [CSS Gradient Generator](#).



Hey! You found this booklet interesting? Support Converting Colors with the new Membership Option!

The pro membership hides all ads, plus gives you double the colors in the color bucket, and more awesome pro features!

**[Learn more, Memberships starting at \\$2.50/m!](#)**

**Follow me  
on Twitter!**

@ConvertingColor