

Converting Colors

Decimal(9533539)

Have a look what the booklet for
Decimal(9533539) contains.

| | |
|--|----|
| Decimal(9533539) | 3 |
| <i>Conversions</i> | 4 |
| <i>Details</i> | 6 |
| <i>Harmonies</i> | 11 |
| <i>Previews</i> | 23 |
| <i>Color Blindness Simulation</i> | 26 |
| <i>CSS Examples</i> | 29 |

Color

Decimal(9533539)

Conversions

Conversions Part 1

| Format | Color |
|---------------|----------------------------|
| Hex | 917863 |
| RGB | 145, 120, 99 |
| RGB Percent | 57%, 47%, 39% |
| CMY | 0.4314, 0.5294, 0.6118 |
| CMYK | 0.00, 0.17, 0.32, 0.43 |
| HSL | 27°, 19%, 48% |
| HSV | 27°, 32%, 57% |
| XYZ | 20.6457, 20.3535, 14.6449 |
| YIQ | 125.0810, 21.6410, -1.2310 |

Conversions

Conversions Part 2

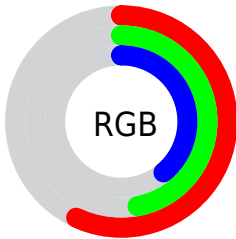
| Format | Color |
|-------------------------------------|--------------------------------|
| R_{YB} | 145, 138, 99 |
| Decimal | 9533539 |
| CIE _{Lab} | 52.23, 6.45, 15.17 |
| CIE _{LCh} | 52, 16.487, 66.981 |
| Yxy | 20.3535, 0.3710, 0.3658 |
| Android (android.graphics.Color) | 4287723619 (0xFF917863) |
| YUV | 125.0810, -12.8579, 17.4690 |
| Hunter-Lab | 45.1149, 2.7348, 12.3341 |

Details

The Decimal color **9533539** is a dark color, and the websafe version is hex **996666**. A complement of this color would be **6519953**, and the grayscale version is **8224125**.

A 20% lighter version of the original color is **13151382**, and **6178868** is the 20% darker color. If you saturate the color by 10%, you get **9531477**, and if you desaturate by 10%, it is **9535602**.

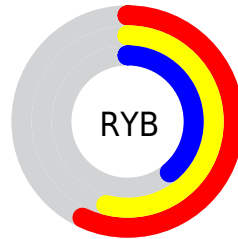
Distribution



Red (57%)

Green (47%)

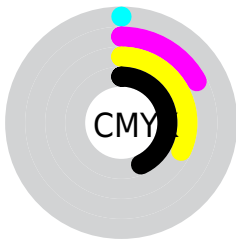
Blue (39%)



Red (57%)

Yellow (54%)

Blue (39%)

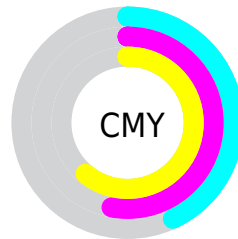


Cyan (0%)

Magenta (17%)

Yellow (32%)

Black (43%)



Cyan (43%)

Magenta (53%)

Yellow (61%)

Brightness & Saturation Gradients

These gradients show how the Decimal color 9533539 changes by changing the brightness by 10 percent. The first figure shows a shift by +10% for each color and the second figure -10%.

Similar to the brightness gradients but the following saturation gradients show a change of the Decimal color 9533539 by changing the saturation by 10% instead.

 9533539

 9533539

16777215

 7823179

 13151382

 6178868

 14993585

 4534559

 16770252

 3021832

 16777192

 1573632

 0

 9533539

 9533539

 9531477

 9535602

 9529414

 9537664

9527352

9539727

9525289

9541789

9523483

9543595

9521420

9545658

9519616

9547721

9549783

9551846

Harmonies

Analogous

The Analogous color harmony consists of three colors that are next to each other on the color wheel.



10056812



9533539



8682849

Triad

The Triadic color harmony groups three colors that are evenly spaced from another and form a triangle on the color wheel.



9533539



5866879



8616083

Complementary

The Complementary color scheme is a pair of colors which are on the opposite of each other on the color wheel.



9533539



6519953

Split Complementary

Split-complementary colors differ from the complementary color scheme. The scheme consists of three colors, the original color and two neighbors of the complement color.



7437720



9533539



5670029

Square

The Square scheme is like the rectangle color scheme, but the four colors are evenly spaced on the color wheel.



9533539



6587505



6259094



9598088

Rectangle

The Rectangle color scheme consists of four colors that form a rectangle on the color wheel.



9533539



8028259



6259094



8223126

Sweetspot

The Sweet Spot groups the original color and five complimentary colors.



9533539



12432042



9528188



6182995



14606046



6184542

Same Dimension

The Same Dimension uses a secret algorithm to generate beautiful new colors.



9533539



12424821



9539427



4670528



8863232



525056

Inverse Universe

The Inverse Universe completely reimagines the original color for something new.



6519953



7707837



6514065



4211783



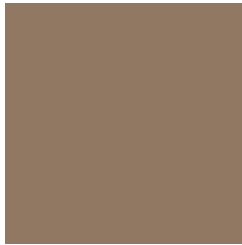
18823



1032

Previews

White Background



This preview shows how the Decimal color 9533539 looks on a white background.

Color Contrast Check

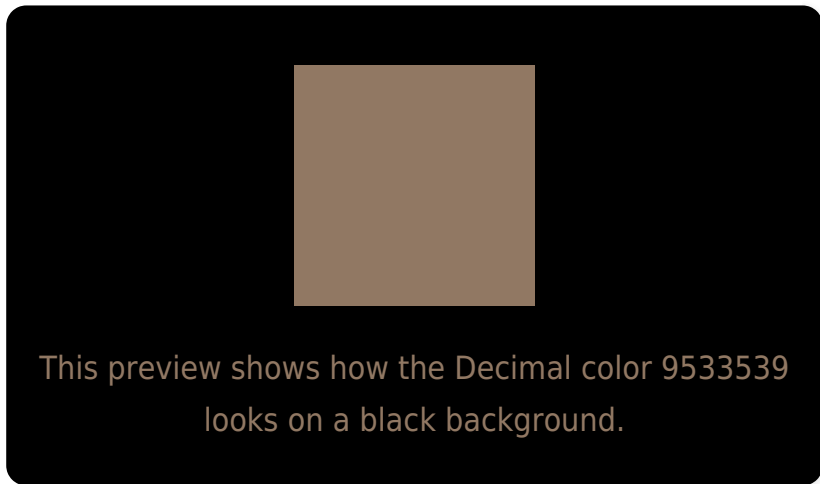
Large Text (above 18pt) WCAG AA ✓ Pass

Any Text WCAG AA × Fail

Large Text (above 18pt) WCAG AAA × Fail

Any Text WCAG AAA × Fail

Black Background



Color Contrast Check

Large Text (above 18pt) WCAG AA ✓ Pass

Any Text WCAG AA ✓ Pass

Large Text (above 18pt) WCAG AAA ✓ Pass

Any Text WCAG AAA × Fail

If you want to check with other color combinations, try the [Color Contrast Checker](#).

Decimal 9533539 Background



This preview shows how black text looks on a background with the Decimal color 9533539.



This preview shows how white text looks on a background with the Decimal color 9533539.

Color Blindness Simulation

Color vision deficiency is a very complex topic, and I could not describe the different causes any better than Wikipedia does, so if you want to learn more, you should check out their [article about color blindness](#).


Dichromacy



Original Color
9533539

Protanopia
8682597

Deuteranopia
9599075



Tritanopia
9729149

Trichromacy



Original Color
9533539

Protanomaly
9010020

Deuteranomaly
9599075

Tritanomaly
9663860

Monochromacy



Original Color
9533539

Achromatopsia
8224125

Achromatomaly
8682356

CSS Examples

Text

The CSS property to change the color of the text to Decimal 9533539 is called "color". The color property can be set on classes, ids or directly on the HTML element.

This example shows how text in the color #917863 looks like.

```
.text, #text, p{  
  color:#917863  
}
```

If you want to add a text shadow in that color use the text-shadow property, you can generate a text shadow directly with our [CSS Text Shadow Generator](#).

Here you see how black text with a 4 pixel #917863 colored shadow looks like.

```
.shadow{ text-shadow: 4px 4px 2px #917863
}
```

Border

The CSS property to change the border of an element to Decimal 9533539 is called "border". The border property can be set on classes, ids or directly on the HTML element.

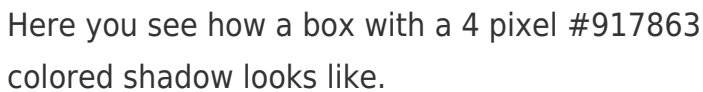
This example shows the color as border, it can be applied via the CSS property "border" or "border-color".

```
.border, #border, table{ border:4px solid
#917863 }
```

If only the border color should be changed use the property `border-color`.

```
.border{ border-color:#917863 }
```

If you want to add a box shadow in that color use:



Here you see how a box with a 4 pixel #917863 colored shadow looks like.

```
.boxshadow{ -moz-box-shadow:4px 4px 4px  
4px #917863; -webkit-box-shadow:4px 4px  
4px 4px #917863; box-shadow:4px 4px 4px  
4px #917863 }
```

Background

The CSS property to change the background color of an element to Decimal 9533539 is called "background". The background property can be set on classes, ids or directly on the HTML element.

```
.background, #background, body{  
background:#917863 }
```

If only the background color should be changed can be used:

```
.background{ background-color:#917863 }
```

This example shows the color as background, it is applied via the CSS property "background".

To optimize and compress your CSS code, you can use our [online CSS compressor and optimizer](#) based on csstidy. If you want to create a linear or radial gradient as background or border, check our [CSS Gradient Generator](#).

Hey! You found this booklet interesting? Support Converting Colors with the new Membership Option!

The pro membership hides all ads, plus gives you double the colors in the color bucket, and more awesome pro features!

[Learn more, Memberships starting at \\$2.50/m!](#)

**Follow me
on Twitter!**

@ConvertingColor