

Converting Colors

Decimal(9663843)

Have a look what the booklet for
Decimal(9663843) contains.

| | |
|--|----|
| Decimal(9663843) | 3 |
| <i>Conversions</i> | 4 |
| <i>Details</i> | 6 |
| <i>Harmonies</i> | 11 |
| <i>Previews</i> | 23 |
| <i>Color Blindness Simulation</i> | 26 |
| <i>CSS Examples</i> | 29 |

Color

Decimal(9663843)

Conversions

Conversions Part 1

| Format | Color |
|---------------|---------------------------|
| Hex | 937563 |
| RGB | 147, 117, 99 |
| RGB Percent | 58%, 46%, 39% |
| CMY | 0.4235, 0.5412, 0.6118 |
| CMYK | 0.00, 0.20, 0.33, 0.42 |
| HSL | 22°, 20%, 48% |
| HSV | 22°, 33%, 58% |
| XYZ | 20.6460, 19.8265, 14.5431 |
| YIQ | 123.9180, 23.6580, 0.7620 |

Conversions

Conversions Part 2

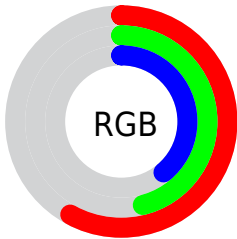
| Format | Color |
|-------------------------------------|--------------------------------|
| R_YB | 147, 128, 99 |
| Decimal | 9663843 |
| CIE Lab | 51.64, 9.01, 14.39 |
| CIE LCh | 52, 16.976, 57.944 |
| Yxy | 19.8265, 0.3753, 0.3604 |
| Android (android.graphics.Color) | 4287853923 (0xFF937563) |
| YUV | 123.9180, -12.2846, 20.2429 |
| Hunter-Lab | 44.5269, 4.8439, 11.8039 |

Details

The Decimal color **9663843** is a dark color, and the websafe version is hex **996666**. A complement of this color would be **6521235**, and the grayscale version is **8158332**.

A 20% lighter version of the original color is **13281686**, and **6243636** is the 20% darker color. If you saturate the color by 10%, you get **9661524**, and if you desaturate by 10%, it is **9666162**.

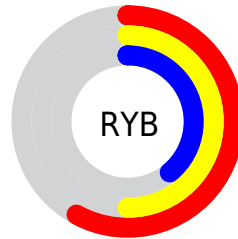
Distribution



Red (58%)

Green (46%)

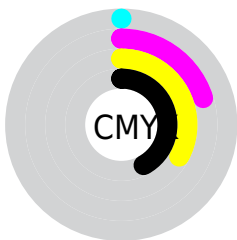
Blue (39%)



Red (58%)

Yellow (50%)

Blue (39%)

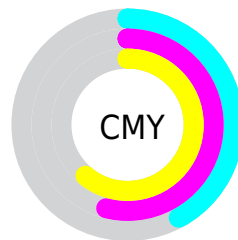


Cyan (0%)

Magenta (20%)

Yellow (33%)

Black (42%)



Cyan (42%)

Magenta (54%)

Yellow (61%)

Brightness & Saturation Gradients

These gradients show how the Decimal color 9663843 changes by changing the brightness by 10 percent. The first figure shows a shift by +10% for each color and the second figure -10%.

Similar to the brightness gradients but the following saturation gradients show a change of the Decimal color 9663843 by changing the saturation by 10% instead.

 9663843

 9663843

16777215

 7953483

 13281686

 6243636

 15123633

 4664863

 16769228

 3152392

 16776680

 1638400

 0

 9663843

 9663843

 9661524

 9666162

 9659206

 9668480

9656631

9671055

9654312

9673374

9651994

9675693

9649675

9678011

9647872

9680330

9682649

9685223

Harmonies

Analogous

The Analogous color harmony consists of three colors that are next to each other on the color wheel.



10056302



9663843



8878686

Triad

The Triadic color harmony groups three colors that are evenly spaced from another and form a triangle on the color wheel.



9663843



5866362



8157333

Complementary

The Complementary color scheme is a pair of colors which are on the opposite of each other on the color wheel.



9663843



6521235

Split Complementary

Split-complementary colors differ from the complementary color scheme. The scheme consists of three colors, the original color and two neighbors of the complement color.



6913432



9663843



5407624

Square

The Square scheme is like the rectangle color scheme, but the four colors are evenly spaced on the color wheel.



9663843



6783595



5800339



9270155

Rectangle

The Rectangle color scheme consists of four colors that form a rectangle on the color wheel.



9663843



8224095



5800339



7764375

Sweetspot

The Sweet Spot groups the original color and five complimentary colors.



9663843



12563372



9659265



6380117



14737632



6381921

Same Dimension

The Same Dimension uses a secret algorithm to generate beautiful new colors.



9663843



12554613



9669987



4867395



9057280



656384

Inverse Universe

The Inverse Universe completely reimagines the original color for something new.



6521235



7709631



6515091



4409162



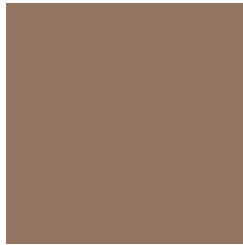
22154



1546

Previews

White Background



This preview shows how the Decimal color 9663843 looks on a white background.

Color Contrast Check

Large Text (above 18pt) WCAG AA ✓ Pass

Any Text WCAG AA × Fail

Large Text (above 18pt) WCAG AAA × Fail

Any Text WCAG AAA × Fail

Black Background



This preview shows how the Decimal color 9663843 looks on a black background.

Color Contrast Check

Large Text (above 18pt) WCAG AA ✓ Pass

Any Text WCAG AA ✓ Pass

Large Text (above 18pt) WCAG AAA ✓ Pass

Any Text WCAG AAA × Fail

If you want to check with other color combinations, try the [Color Contrast Checker](#).

Decimal 9663843 Background



This preview shows how black text looks on a background with the Decimal color 9663843.



This preview shows how white text looks on a background with the Decimal color 9663843.

Color Blindness Simulation

Color vision deficiency is a very complex topic, and I could not describe the different causes any better than Wikipedia does, so if you want to learn more, you should check out their [article about color blindness](#).

Dichromacy



Original Color
9663843

Protanopia
8551270

Deuteranopia
9467491



Tritanopia
9794170

Trichromacy



Original Color
9663843

Protanomaly
8943973

Deuteranomaly
9533027

Tritanomaly
9728882

Monochromacy



Original Color
9663843

Achromatopsia
8158332

Achromatomaly
8681843

CSS Examples

Text

The CSS property to change the color of the text to Decimal 9663843 is called "color". The color property can be set on classes, ids or directly on the HTML element.

This example shows how text in the color #937563 looks like.

```
.text, #text, p{  
    color:#937563  
}
```

If you want to add a text shadow in that color use the text-shadow property, you can generate a text shadow directly with our [CSS Text Shadow Generator](#).

Here you see how black text with a 4 pixel #937563 colored shadow looks like.

```
.shadow{ text-shadow: 4px 4px 2px #937563
}
```

Border

The CSS property to change the border of an element to Decimal 9663843 is called "border". The border property can be set on classes, ids or directly on the HTML element.

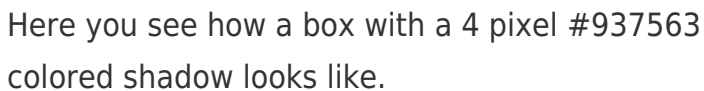
This example shows the color as border, it can be applied via the CSS property "border" or "border-color".

```
.border, #border, table{ border:4px solid
#937563 }
```

If only the border color should be changed use the property `border-color`.

```
.border{ border-color:#937563 }
```

If you want to add a box shadow in that color use:



Here you see how a box with a 4 pixel #937563 colored shadow looks like.

```
.boxshadow{ -moz-box-shadow:4px 4px 4px  
4px #937563; -webkit-box-shadow:4px 4px  
4px 4px #937563; box-shadow:4px 4px 4px  
4px #937563 }
```

Background

The CSS property to change the background color of an element to Decimal 9663843 is called "background". The background property can be set on classes, ids or directly on the HTML element.

```
.background, #background, body{  
background:#937563 }
```

If only the background color should be changed can be used:

```
.background{ background-color:#937563 }
```

This example shows the color as background, it is applied via the CSS property "background".

To optimize and compress your CSS code, you can use our [online CSS compressor and optimizer](#) based on csstidy. If you want to create a linear or radial gradient as background or border, check our [CSS Gradient Generator](#).

Hey! You found this booklet interesting? Support Converting Colors with the new Membership Option!

The pro membership hides all ads, plus gives you double the colors in the color bucket, and more awesome pro features!

[Learn more, Memberships starting at \\$2.50/m!](#)

**Follow me
on Twitter!**

@ConvertingColor