

# Converting Colors

Decimal(9731433)

Have a look what the booklet for  
Decimal(9731433) contains.

<b>Decimal(9731433)</b> .....	3
<b><i>Conversions</i></b> .....	4
<b><i>Details</i></b> .....	6
<b><i>Harmonies</i></b> .....	11
<b><i>Previews</i></b> .....	23
<b><i>Color Blindness Simulation</i></b> .....	26
<b><i>CSS Examples</i></b> .....	29

**Color**

**Decimal(9731433)**

# Conversions

## Conversions Part 1

<b>Format</b>	<b>Color</b>
Hex	947D69
RGB	148, 125, 105
RGB Percent	58%, 49%, 41%
CMY	0.4196, 0.5098, 0.5882
CMYK	0.00, 0.16, 0.29, 0.42
HSL	28°, 17%, 50%
HSV	28°, 29%, 58%
XYZ	22.0962, 21.9831, 16.4432
YIQ	129.5970, 20.1280, -1.3440

# Conversions

## Conversions Part 2

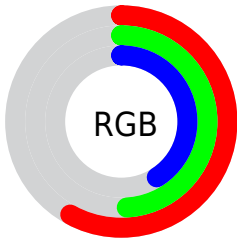
<b>Format</b>	<b>Color</b>
<b>R<sub>YB</sub></b>	148, 142, 105
Decimal	9731433
CIE <sub>Lab</sub>	54.01, 5.68, 14.20
CIE <sub>LCh</sub>	54, 15.293, 68.203
Yxy	21.9831, 0.3651, 0.3632
Android (android.graphics.Color)	4287921513 (0xFF947D69)
YUV	129.5970, -12.1263, 16.1394
Hunter-Lab	46.8861, 2.0716, 12.0270

# Details

The Decimal color **9731433** is a dark color, and the websafe version is hex **996666**. A complement of this color would be **6914196**, and the grayscale version is **8553090**.

A 20% lighter version of the original color is **13349532**, and **6376506** is the 20% darker color. If you saturate the color by 10%, you get **9729370**, and if you desaturate by 10%, it is **9733496**.

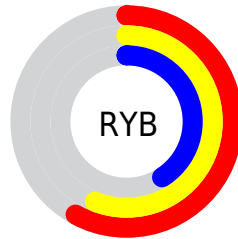
# Distribution



Red (58%)

Green (49%)

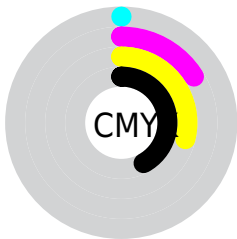
Blue (41%)



Red (58%)

Yellow (56%)

Blue (41%)

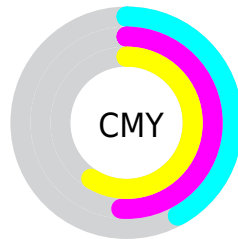


Cyan (0%)

Magenta (16%)

Yellow (29%)

Black (42%)



Cyan (42%)

Magenta (51%)

Yellow (59%)

# Brightness & Saturation Gradients

These gradients show how the Decimal color 9731433 changes by changing the brightness by 10 percent. The first figure shows a shift by +10% for each color and the second figure -10%.

Similar to the brightness gradients but the following saturation gradients show a change of the Decimal color 9731433 by changing the saturation by 10% instead.



■ 9731433

■ 9731433

16777215

■ 8021073

■ 13349532

■ 6376506

■ 15191479

■ 4732452

■ 16771539

■ 3219471

■ 16777199

■ 1837568

■ 0

■ 9731433

■ 9731433

■ 9729370

■ 9733496

■ 9727307

■ 9735559

■ 9725245

■ 9737621

■ 9723182

■ 9739684

■ 9721119

■ 9741747

■ 9719312

■ 9743554

■ 9717249

■ 9745617

■ 9716992

■ 9747679

■ 9749742

# Harmonies

## Analogous

The Analogous color harmony consists of three colors that are next to each other on the color wheel.



10189169



9731433



8946023

# Triad

The Triadic color harmony groups three colors that are evenly spaced from another and form a triangle on the color wheel.



9731433



6326660



8945046

# Complementary

The Complementary color scheme is a pair of colors which are on the opposite of each other on the color wheel.



9731433



6914196

# Split Complementary

Split-complementary colors differ from the complementary color scheme. The scheme consists of three colors, the original color and two neighbors of the complement color.



7831963



9731433



6195345

# Square

The Square scheme is like the rectangle color scheme, but the four colors are evenly spaced on the color wheel.



9731433



6981751



6784409



9795979

# Rectangle

The Rectangle color scheme consists of four colors that form a rectangle on the color wheel.



9731433



8291434



6784409



8552088



# Sweetspot

The Sweet Spot groups the original color and five complimentary colors.



9731433



12564142



9726337



6380374



14737632



6381921



# Same Dimension

The Same Dimension uses a secret algorithm to generate beautiful new colors.



9731433



12557180



9736809



4867651



9060352



656640



# Inverse Universe

The Inverse Universe completely reimagines the original color for something new.



6914196



8167615



6908820



4409162



19082

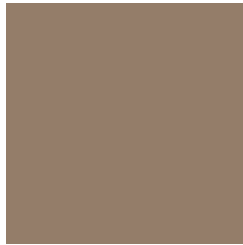


1290



# Previews

## White Background



This preview shows how the Decimal color 9731433 looks on a white background.

## Color Contrast Check

Large Text (above 18pt) WCAG AA ✓ Pass

Any Text WCAG AA × Fail

Large Text (above 18pt) WCAG AAA × Fail

Any Text WCAG AAA × Fail

# Black Background



This preview shows how the Decimal color 9731433 looks on a black background.

## Color Contrast Check

Large Text (above 18pt) WCAG AA ✓ Pass

Any Text WCAG AA ✓ Pass

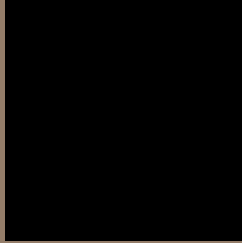
Large Text (above 18pt) WCAG AAA ✓ Pass

Any Text WCAG AAA × Fail

If you want to check with other color combinations, try the [Color Contrast Checker](#).



## Decimal 9731433 Background



This preview shows how black text looks on a background with the Decimal color 9731433.



This preview shows how white text looks on a background with the Decimal color 9731433.

# Color Blindness Simulation

Color vision deficiency is a very complex topic, and I could not describe the different causes any better than Wikipedia does, so if you want to learn more, you should check out their [article about color blindness](#).

## Dichromacy



**Original Color**  
9731433

**Protanopia**  
9011563

**Deuteranopia**  
9862249



**Tritanopia**  
9927043

# Trichromacy



**Original Color**

9731433

**Protanomaly**

9273450

**Deuteranomaly**

9796713

**Tritanomaly**

9861754

# Monochromacy



**Original Color**

9731433

**Achromatopsia**

8553090

**Achromatomaly**

9011321

# CSS Examples

## Text

The CSS property to change the color of the text to Decimal 9731433 is called "color". The color property can be set on classes, ids or directly on the HTML element.

This example shows how text in the color #947D69 looks like.

```
.text, #text, p{  
    color:#947D69  
}
```

If you want to add a text shadow in that color use the text-shadow property, you can generate a text shadow directly with our [CSS Text Shadow Generator](#).

Here you see how black text with a 4 pixel #947D69 colored shadow looks like.

```
.shadow{ text-shadow: 4px 4px 2px #947D69
}
```

## Border

The CSS property to change the border of an element to Decimal 9731433 is called "border". The border property can be set on classes, ids or directly on the HTML element.

This example shows the color as border, it can be applied via the CSS property "border" or "border-color".

```
.border, #border, table{ border:4px solid
#947D69 }
```

If only the border color should be changed use the property `border-color`.

```
.border{ border-color:#947D69 }
```

If you want to add a box shadow in that color use:

Here you see how a box with a 4 pixel #947D69 colored shadow looks like.

```
.boxshadow{ -moz-box-shadow:4px 4px 4px  
4px #947D69; -webkit-box-shadow:4px 4px  
4px 4px #947D69; box-shadow:4px 4px 4px  
4px #947D69 }
```

# Background

The CSS property to change the background color of an element to Decimal 9731433 is called "background". The background property can be set on classes, ids or directly on the HTML element.

```
.background, #background, body{  
background:#947D69 }
```

If only the background color should be changed can be used:

```
.background{ background-color:#947D69 }
```

This example shows the color as background, it is applied via the CSS property "background".

To optimize and compress your CSS code, you can use our [online CSS compressor and optimizer](#) based on csstidy. If you want to create a linear or radial gradient as background or border, check our [CSS Gradient Generator](#).



Hey! You found this booklet interesting? Support Converting Colors with the new Membership Option!

The pro membership hides all ads, plus gives you double the colors in the color bucket, and more awesome pro features!

**[Learn more, Memberships starting at \\$2.50/m!](#)**

**Follow me  
on Twitter!**

@ConvertingColor