

# Converting Colors

Decimal(9731951)

Have a look what the booklet for  
Decimal(9731951) contains.

<b>Decimal(9731951)</b> .....	3
<i><b>Conversions</b></i> .....	4
<i><b>Details</b></i> .....	6
<i><b>Harmonies</b></i> .....	11
<i><b>Previews</b></i> .....	23
<i><b>Color Blindness Simulation</b></i> .....	26
<i><b>CSS Examples</b></i> .....	29

**Color**

**Decimal(9731951)**

# Conversions

## Conversions Part 1

<b>Format</b>	<b>Color</b>
Hex	947F6F
RGB	148, 127, 111
RGB Percent	58%, 50%, 44%
CMY	0.4196, 0.5020, 0.5647
CMYK	0.00, 0.14, 0.25, 0.42
HSL	26°, 15%, 51%
HSV	26°, 25%, 58%
XYZ	22.6714, 22.6223, 18.2106
YIQ	131.4550, 17.6520, -0.5240

# Conversions

## Conversions Part 2

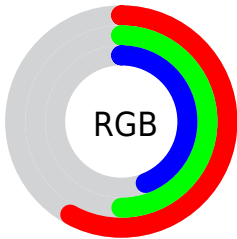
<b>Format</b>	<b>Color</b>
<b>R<sub>YB</sub></b>	148, 139, 111
Decimal	9731951
CIE Lab	54.68, 5.43, 11.67
CIE LCh	55, 12.872, 65.066
Yxy	22.6223, 0.3570, 0.3562
Android (android.graphics.Color)	4287922031 (0xFF947F6F)
YUV	131.4550, -10.0843, 14.5100
Hunter-Lab	47.5629, 1.8487, 10.5935

# Details

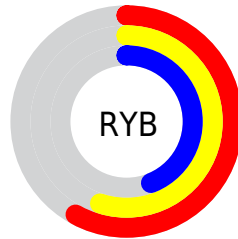
The Decimal color **9731951** is a dark color, and the websafe version is hex **999999**. A complement of this color would be **7308436**, and the grayscale version is **8684676**.

A 20% lighter version of the original color is **13284515**, and **6377023** is the 20% darker color. If you saturate the color by 10%, you get **9729888**, and if you desaturate by 10%, it is **9734014**.

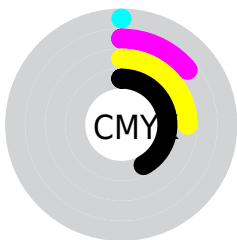
# Distribution



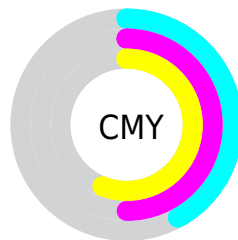
- Red (58%)
- Green (50%)
- Blue (44%)



- Red (58%)
- Yellow (55%)
- Blue (44%)



- Cyan (0%)
- Magenta (14%)
- Yellow (25%)
- Black (42%)



- Cyan (42%)
- Magenta (50%)
- Yellow (56%)

# Brightness & Saturation Gradients

These gradients show how the Decimal color 9731951 changes by changing the brightness by 10 percent. The first figure shows a shift by +10% for each color and the second figure -10%.

Similar to the brightness gradients but the following saturation gradients show a change of the Decimal color 9731951 by changing the saturation by 10% instead.





9731951



9731951

16777215



8021591



13284515



6377023



15191998



4732713



16772058



3219989



16777206



1903616



0



9731951



9731951



9729888



9734014



9727569



9736333

■ 9725507

■ 9738395

■ 9723188

■ 9740714

■ 9721125

■ 9742777

■ 9719062

■ 9744840

■ 9716743

■ 9747159

■ 9715712

■ 9749221

■ 9751540

# Harmonies

## Analogous

The Analogous color harmony consists of three colors that are next to each other on the color wheel.



10124407



9731951



9077613

# Triad

The Triadic color harmony groups three colors that are evenly spaced from another and form a triangle on the color wheel.



9731951



6850948



8880021

# Complementary

The Complementary color scheme is a pair of colors which are on the opposite of each other on the color wheel.



9731951



7308436

# Split Complementary

Split-complementary colors differ from the complementary color scheme. The scheme consists of three colors, the original color and two neighbors of the complement color.



7963545



9731951



6719887

# Square

The Square scheme is like the rectangle color scheme, but the four colors are evenly spaced on the color wheel.



9731951



7440505



7112599



9665676

# Rectangle

The Rectangle color scheme consists of four colors that form a rectangle on the color wheel.



9731951



8553839



7112599



8618391



# Sweetspot

The Sweet Spot groups the original color and five complimentary colors.



9731951



12564400



9727877



6380375



14737632



6381921



# Same Dimension

The Same Dimension uses a secret algorithm to generate beautiful new colors.



9731951



12558214



9736559



4867651



9059328



656384



# Inverse Universe

The Inverse Universe completely reimagines the original color for something new.



7308436



8824511



7303828



4409162



20106

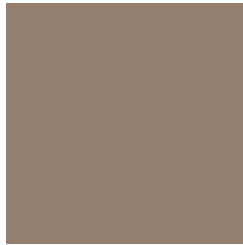


1546



# Previews

## White Background



This preview shows how the Decimal color 9731951 looks on a white background.

## Color Contrast Check

Large Text (above 18pt) WCAG AA ✓ Pass

Any Text WCAG AA × Fail

Large Text (above 18pt) WCAG AAA × Fail

Any Text WCAG AAA × Fail

# Black Background



This preview shows how the Decimal color 9731951 looks on a black background.

## Color Contrast Check

Large Text (above 18pt) WCAG AA ✓ Pass

Any Text WCAG AA ✓ Pass

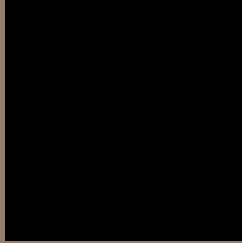
Large Text (above 18pt) WCAG AAA ✓ Pass

Any Text WCAG AAA × Fail

If you want to check with other color combinations, try the [Color Contrast Checker](#).



## Decimal 9731951 Background



This preview shows how black text looks on a background with the Decimal color 9731951.



This preview shows how white text looks on a background with the Decimal color 9731951.

# Color Blindness Simulation

Color vision deficiency is a very complex topic, and I could not describe the different causes any better than Wikipedia does, so if you want to learn more, you should check out their [article about color blindness](#).

## Dichromacy



**Original Color**  
9731951

**Protanopia**  
9012081

**Deuteranopia**  
9928303



**Tritanopia**  
9927813

# Trichromacy



**Original Color**  
9731951

**Protanomaly**  
9273968

**Deuteranomaly**  
9862767

**Tritanomaly**  
9862525

# Monochromacy



**Original Color**  
9731951

**Achromatopsia**  
8618883

**Achromatomaly**  
9011836

# CSS Examples

## Text

The CSS property to change the color of the text to Decimal 9731951 is called "color". The color property can be set on classes, ids or directly on the HTML element.

This example shows how text in the color #947F6F looks like.

```
.text, #text, p{  
    color:#947F6F  
}
```

If you want to add a text shadow in that color use the text-shadow property, you can generate a text shadow directly with our [CSS Text Shadow Generator](#).

Here you see how black text with a 4 pixel #947F6F colored shadow looks like.

```
.shadow{ text-shadow: 4px 4px 2px #947F6F
}
```

## Border

The CSS property to change the border of an element to Decimal 9731951 is called "border". The border property can be set on classes, ids or directly on the HTML element.

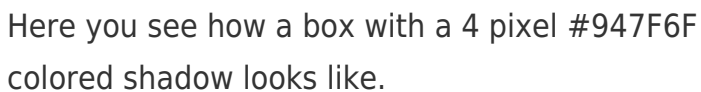
This example shows the color as border, it can be applied via the CSS property "border" or "border-color".

```
.border, #border, table{ border:4px solid
#947F6F }
```

If only the border color should be changed use the property `border-color`.

```
.border{ border-color:#947F6F }
```

If you want to add a box shadow in that color use:



Here you see how a box with a 4 pixel #947F6F colored shadow looks like.

```
.boxshadow{ -moz-box-shadow:4px 4px 4px  
4px #947F6F; -webkit-box-shadow:4px 4px  
4px 4px #947F6F; box-shadow:4px 4px 4px  
4px #947F6F }
```

# Background

The CSS property to change the background color of an element to Decimal 9731951 is called "background". The background property can be set on classes, ids or directly on the HTML element.

```
.background, #background, body{  
background:#947F6F }
```

If only the background color should be changed can be used:

```
.background{ background-color:#947F6F }
```

This example shows the color as background, it is applied via the CSS property "background".

To optimize and compress your CSS code, you can use our [online CSS compressor and optimizer](#) based on csstidy. If you want to create a linear or radial gradient as background or border, check our [CSS Gradient Generator](#).



Hey! You found this booklet interesting? Support Converting Colors with the new Membership Option!

The pro membership hides all ads, plus gives you double the colors in the color bucket, and more awesome pro features!

**[Learn more, Memberships starting at \\$2.50/m!](#)**

**Follow me  
on Twitter!**

@ConvertingColor