

# Converting Colors

Decimal(9794908)

Have a look what the booklet for  
Decimal(9794908) contains.

<b>Decimal(9794908)</b> .....	3
<b><i>Conversions</i></b> .....	4
<b><i>Details</i></b> .....	6
<b><i>Harmonies</i></b> .....	11
<b><i>Previews</i></b> .....	23
<b><i>Color Blindness Simulation</i></b> .....	26
<b><i>CSS Examples</i></b> .....	29

**Color**

**Decimal(9794908)**

# Conversions

## Conversions Part 1

<b>Format</b>	<b>Color</b>
Hex	95755C
RGB	149, 117, 92
RGB Percent	58%, 46%, 36%
CMY	0.4157, 0.5412, 0.6392
CMYK	0.00, 0.21, 0.38, 0.42
HSL	26°, 24%, 47%
HSV	26°, 38%, 58%
XYZ	20.6875, 19.8848, 12.8730
YIQ	123.7180, 27.0970, -0.9910

# Conversions

## Conversions Part 2

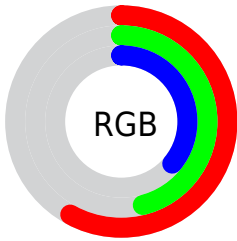
<b>Format</b>	<b>Color</b>
<b>RYB</b>	149, 137, 92
Decimal	9794908
CIELab	51.71, 8.92, 18.58
CIElCh	52, 20.608, 64.337
Yxy	19.8848, 0.3871, 0.3721
Android (android.graphics.Color)	4287984988 (0xFF95755C)
YUV	123.7180, -15.6370, 22.1723
Hunter-Lab	44.5924, 4.7736, 14.0988

# Details

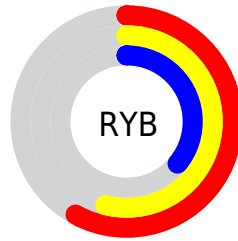
The Decimal color **9794908** is a dark color, and the websafe version is hex **996666**. A complement of this color would be **6061205**, and the grayscale version is **8158332**.

A 20% lighter version of the original color is **13412750**, and **6374702** is the 20% darker color. If you saturate the color by 10%, you get **9792845**, and if you desaturate by 10%, it is **9796971**.

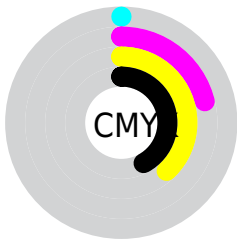
# Distribution



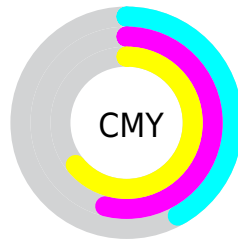
- Red (58%)
- Green (46%)
- Blue (36%)



- Red (58%)
- Yellow (54%)
- Blue (36%)



- Cyan (0%)
- Magenta (21%)
- Yellow (38%)
- Black (42%)



- Cyan (42%)
- Magenta (54%)
- Yellow (64%)

# Brightness & Saturation Gradients

These gradients show how the Decimal color 9794908 changes by changing the brightness by 10 percent. The first figure shows a shift by +10% for each color and the second figure -10%.

Similar to the brightness gradients but the following saturation gradients show a change of the Decimal color 9794908 by changing the saturation by 10% instead.



 9794908

 9794908

16777215

 8019012

 13412750

 6374702

 15320233

 4730393

 16769220

 3217920

 16776672

 1638400

16777213

 0

 9794908

 9794908

 9792845

 9796971

 9790526

 9799290

9788463

9801353

9786400

9803416

9784082

9805735

9782019

9807797

9781504

9810116

9812179

9814242

# Harmonies

## Analogous

The Analogous color harmony consists of three colors that are next to each other on the color wheel.



10383464



9794908



8813400

# Triad

The Triadic color harmony groups three colors that are evenly spaced from another and form a triangle on the color wheel.



9794908



5080445



8484504

# Complementary

The Complementary color scheme is a pair of colors which are on the opposite of each other on the color wheel.



9794908



6061205

# Split Complementary

Split-complementary colors differ from the complementary color scheme. The scheme consists of three colors, the original color and two neighbors of the complement color.



6913182



9794908



4686990

# Square

The Square scheme is like the rectangle color scheme, but the four colors are evenly spaced on the color wheel.



9794908



6194283



5407130



9728395

# Rectangle

The Rectangle color scheme consists of four colors that form a rectangle on the color wheel.



9794908



7962459



5407130



8026267



# Sweetspot

The Sweet Spot groups the original color and five complimentary colors.



9794908



12760748



9788540



6380116



14737632



6381921



# Same Dimension

The Same Dimension uses a secret algorithm to generate beautiful new colors.



9794908



12750953



9802076



4867651



9059328



656384



# Inverse Universe

The Inverse Universe completely reimagines the original color for something new.



6061205



6921154



6054037



4409162



19850

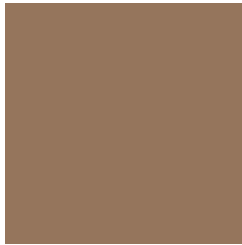


1546



# Previews

## White Background



This preview shows how the Decimal color 9794908 looks on a white background.

## Color Contrast Check

Large Text (above 18pt) WCAG AA ✓ Pass

Any Text WCAG AA × Fail

Large Text (above 18pt) WCAG AAA × Fail

Any Text WCAG AAA × Fail

# Black Background



This preview shows how the Decimal color 9794908 looks on a black background.

## Color Contrast Check

Large Text (above 18pt) WCAG AA ✓ Pass

Any Text WCAG AA ✓ Pass

Large Text (above 18pt) WCAG AAA ✓ Pass

Any Text WCAG AAA × Fail

If you want to check with other color combinations, try the [Color Contrast Checker](#).



## Decimal 9794908 Background



This preview shows how black text looks on a background with the Decimal color 9794908.



This preview shows how white text looks on a background with the Decimal color 9794908.

# Color Blindness Simulation

Color vision deficiency is a very complex topic, and I could not describe the different causes any better than Wikipedia does, so if you want to learn more, you should check out their [article about color blindness](#).

## Dichromacy



**Original Color**  
9794908

**Protanopia**  
8682335

**Deuteranopia**  
9598556



**Tritanopia**  
9990522

# Trichromacy



**Original Color**  
9794908

**Protanomaly**  
9075038

**Deuteranomaly**  
9664092

**Tritanomaly**  
9925231

# Monochromacy



**Original Color**  
9794908

**Achromatopsia**  
8158332

**Achromatomaly**  
8747376

# CSS Examples

## Text

The CSS property to change the color of the text to Decimal 9794908 is called "color". The color property can be set on classes, ids or directly on the HTML element.

This example shows how text in the color #95755C looks like.

```
.text, #text, p{  
    color:#95755C  
}
```

If you want to add a text shadow in that color use the text-shadow property, you can generate a text shadow directly with our [CSS Text Shadow Generator](#).

Here you see how black text with a 4 pixel #95755C colored shadow looks like.

```
.shadow{ text-shadow: 4px 4px 2px #95755C
}
```

## Border

The CSS property to change the border of an element to Decimal 9794908 is called "border". The border property can be set on classes, ids or directly on the HTML element.

This example shows the color as border, it can be applied via the CSS property "border" or "border-color".

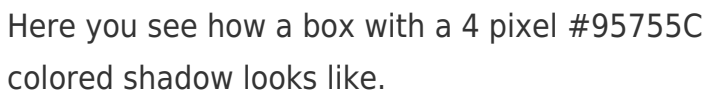
```
.border, #border, table{ border:4px solid
#95755C }
```

If only the border color should be changed use the property `border-color`.

```
.border{ border-color:#95755C }
```

If you want to add a box shadow in that color use:

Here you see how a box with a 4 pixel #95755C colored shadow looks like.



```
.boxshadow{ -moz-box-shadow:4px 4px 4px  
4px #95755C; -webkit-box-shadow:4px 4px  
4px 4px #95755C; box-shadow:4px 4px 4px  
4px #95755C }
```

# Background

The CSS property to change the background color of an element to Decimal 9794908 is called "background". The background property can be set on classes, ids or directly on the HTML element.

```
.background, #background, body{  
background:#95755C }
```

If only the background color should be changed can be used:

```
.background{ background-color:#95755C }
```

This example shows the color as background, it is applied via the CSS property "background".

To optimize and compress your CSS code, you can use our [online CSS compressor and optimizer](#) based on csstidy. If you want to create a linear or radial gradient as background or border, check our [CSS Gradient Generator](#).



Hey! You found this booklet interesting? Support Converting Colors with the new Membership Option!

The pro membership hides all ads, plus gives you double the colors in the color bucket, and more awesome pro features!

**[Learn more, Memberships starting at \\$2.50/m!](#)**

**Follow me  
on Twitter!**

@ConvertingColor