

# Converting Colors

Decimal(9795935)

Have a look what the booklet for  
Decimal(9795935) contains.

<b>Decimal(9795935)</b> .....	3
<b><i>Conversions</i></b> .....	4
<b><i>Details</i></b> .....	6
<b><i>Harmonies</i></b> .....	11
<b><i>Previews</i></b> .....	23
<b><i>Color Blindness Simulation</i></b> .....	26
<b><i>CSS Examples</i></b> .....	29

**Color**

**Decimal(9795935)**

# Conversions

## Conversions Part 1

<b>Format</b>	<b>Color</b>
Hex	95795F
RGB	149, 121, 95
RGB Percent	58%, 47%, 37%
CMY	0.4157, 0.5255, 0.6275
CMYK	0.00, 0.19, 0.36, 0.42
HSL	29°, 22%, 48%
HSV	29°, 36%, 58%
XYZ	21.2974, 20.8905, 13.7363
YIQ	126.4080, 25.0340, -2.1500

# Conversions

## Conversions Part 2

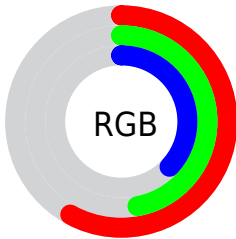
<b>Format</b>	<b>Color</b>
<b>R<sub>YB</sub></b>	149, 145, 95
Decimal	9795935
CIE Lab	52.83, 7.01, 18.36
CIE LCh	53, 19.658, 69.100
Yxy	20.8905, 0.3808, 0.3736
Android (android.graphics.Color)	4287986015 (0xFF95795F)
YUV	126.4080, -15.4841, 19.8132
Hunter-Lab	45.7062, 3.1885, 14.1756

# Details

The Decimal color **9795935** is a dark color, and the websafe version is hex **996666**. A complement of this color would be **6257557**, and the grayscale version is **8355711**.

A 20% lighter version of the original color is **13413778**, and **6375729** is the 20% darker color. If you saturate the color by 10%, you get **9793872**, and if you desaturate by 10%, it is **9797998**.

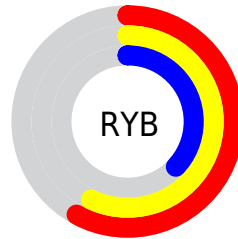
# Distribution



Red (58%)

Green (47%)

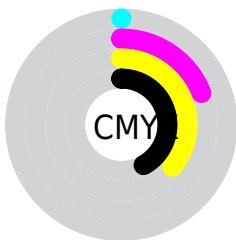
Blue (37%)



Red (58%)

Yellow (57%)

Blue (37%)

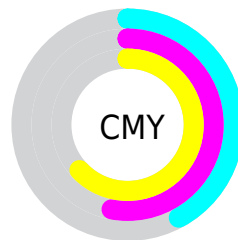


Cyan (0%)

Magenta (19%)

Yellow (36%)

Black (42%)



Cyan (42%)

Magenta (53%)

Yellow (63%)

# Brightness & Saturation Gradients

These gradients show how the Decimal color 9795935 changes by changing the brightness by 10 percent. The first figure shows a shift by +10% for each color and the second figure -10%.

Similar to the brightness gradients but the following saturation gradients show a change of the Decimal color 9795935 by changing the saturation by 10% instead.





9795935



9795935

16777215



8085575



13413778



6375729



15321516



4731419



16770504



3218690



16777188



1704960



0



9795935



9795935



9793872



9797998



9792065



9799805

■ 9790002

■ 9801868

■ 9787939

■ 9803931

■ 9785876

■ 9805994

■ 9784070

■ 9807800

■ 9783296

■ 9809863

■ 9811926

■ 9813989

# Harmonies

## Analogous

The Analogous color harmony consists of three colors that are next to each other on the color wheel.



10450026



9795935



8748893

# Triad

The Triadic color harmony groups three colors that are evenly spaced from another and form a triangle on the color wheel.



9795935



5343363



8878232

# Complementary

The Complementary color scheme is a pair of colors which are on the opposite of each other on the color wheel.



9795935



6257557

# Split Complementary

Split-complementary colors differ from the complementary color scheme. The scheme consists of three colors, the original color and two neighbors of the complement color.



7437983



9795935



5146515

# Square

The Square scheme is like the rectangle color scheme, but the four colors are evenly spaced on the color wheel.



9795935



6260594



5931933



9991051

# Rectangle

The Rectangle color scheme consists of four colors that form a rectangle on the color wheel.



9795935



7963232



5931933



8419996



# Sweetspot

The Sweet Spot groups the original color and five complimentary colors.



9795935



12761004



9789308



6380116



14737632



6381921



# Same Dimension

The Same Dimension uses a secret algorithm to generate beautiful new colors.



9795935



12752750



9802591



4867651



9060864



656640



# Inverse Universe

The Inverse Universe completely reimagines the original color for something new.



6257557



7248578



6250901



4408906



18314

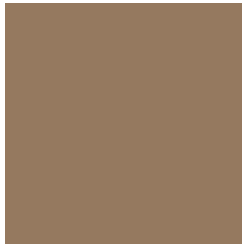


1290



# Previews

## White Background



This preview shows how the Decimal color 9795935 looks on a white background.

## Color Contrast Check

Large Text (above 18pt) WCAG AA ✓ Pass

Any Text WCAG AA × Fail

Large Text (above 18pt) WCAG AAA × Fail

Any Text WCAG AAA × Fail

# Black Background



This preview shows how the Decimal color 9795935 looks on a black background.

## Color Contrast Check

Large Text (above 18pt) WCAG AA ✓ Pass

Any Text WCAG AA ✓ Pass

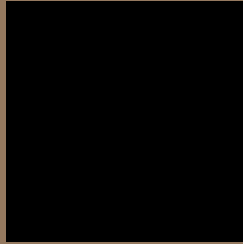
Large Text (above 18pt) WCAG AAA ✓ Pass

Any Text WCAG AAA × Fail

If you want to check with other color combinations, try the [Color Contrast Checker](#).



## Decimal 9795935 Background



This preview shows how black text looks on a background with the Decimal color 9795935.



This preview shows how white text looks on a background with the Decimal color 9795935.

# Color Blindness Simulation

Color vision deficiency is a very complex topic, and I could not describe the different causes any better than Wikipedia does, so if you want to learn more, you should check out their [article about color blindness](#).


## Dichromacy



**Original Color**  
9795935

**Protanopia**  
8879713

**Deuteranopia**  
9795935



**Tritanopia**  
9991550

# Trichromacy



**Original Color**  
9795935

**Protanomaly**  
9206880

**Deuteranomaly**  
9795935

**Tritanomaly**  
9926259

# Monochromacy



**Original Color**  
9795935

**Achromatopsia**  
8289918

**Achromatomaly**  
8813683

# CSS Examples

## Text

The CSS property to change the color of the text to Decimal 9795935 is called "color". The color property can be set on classes, ids or directly on the HTML element.

This example shows how text in the color #95795F looks like.

```
.text, #text, p{  
  color:#95795F  
}
```

If you want to add a text shadow in that color use the text-shadow property, you can generate a text shadow directly with our [CSS Text Shadow Generator](#).

Here you see how black text with a 4 pixel #95795F colored shadow looks like.

```
.shadow{ text-shadow: 4px 4px 2px #95795F  
}
```

## Border

The CSS property to change the border of an element to Decimal 9795935 is called "border". The border property can be set on classes, ids or directly on the HTML element.

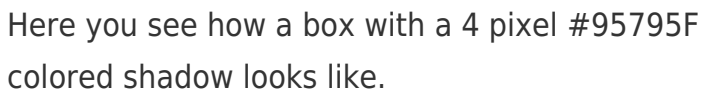
This example shows the color as border, it can be applied via the CSS property "border" or "border-color".

```
.border, #border, table{ border:4px solid  
#95795F }
```

If only the border color should be changed use the property `border-color`.

```
.border{ border-color:#95795F }
```

If you want to add a box shadow in that color use:



Here you see how a box with a 4 pixel #95795F colored shadow looks like.

```
.boxshadow{ -moz-box-shadow:4px 4px 4px  
4px #95795F; -webkit-box-shadow:4px 4px  
4px 4px #95795F; box-shadow:4px 4px 4px  
4px #95795F }
```

# Background

The CSS property to change the background color of an element to Decimal 9795935 is called "background". The background property can be set on classes, ids or directly on the HTML element.

```
.background, #background, body{  
background:#95795F }
```

If only the background color should be changed can be used:

```
.background{ background-color:#95795F }
```

This example shows the color as background, it is applied via the CSS property "background".

To optimize and compress your CSS code, you can use our [online CSS compressor and optimizer](#) based on csstidy. If you want to create a linear or radial gradient as background or border, check our [CSS Gradient Generator](#).



Hey! You found this booklet interesting? Support Converting Colors with the new Membership Option!

The pro membership hides all ads, plus gives you double the colors in the color bucket, and more awesome pro features!

**[Learn more, Memberships starting at \\$2.50/m!](#)**

**Follow me  
on Twitter!**

@ConvertingColor