

# Converting Colors

Decimal(9795939)

Have a look what the booklet for  
Decimal(9795939) contains.

<b>Decimal(9795939)</b> .....	3
<b><i>Conversions</i></b> .....	4
<b><i>Details</i></b> .....	6
<b><i>Harmonies</i></b> .....	11
<b><i>Previews</i></b> .....	23
<b><i>Color Blindness Simulation</i></b> .....	26
<b><i>CSS Examples</i></b> .....	29

**Color**

**Decimal(9795939)**

# Conversions

## Conversions Part 1

<b>Format</b>	<b>Color</b>
Hex	957963
RGB	149, 121, 99
RGB Percent	58%, 47%, 39%
CMY	0.4157, 0.5255, 0.6118
CMYK	0.00, 0.19, 0.34, 0.42
HSL	26°, 20%, 49%
HSV	26°, 34%, 58%
XYZ	21.4839, 20.9652, 14.7187
YIQ	126.8640, 23.7500, -0.9060

# Conversions

## Conversions Part 2

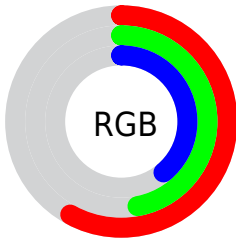
<b>Format</b>	<b>Color</b>
<b>RYB</b>	149, 138, 99
Decimal	9795939
CIELab	52.91, 7.54, 16.17
CIElCh	53, 17.842, 64.987
Yxy	20.9652, 0.3758, 0.3667
Android (android.graphics.Color)	4287986019 (0xFF957963)
YUV	126.8640, -13.7370, 19.4133
Hunter-Lab	45.7877, 3.6250, 12.9923

# Details

The Decimal color **9795939** is a dark color, and the websafe version is hex **996666**. A complement of this color would be **6520725**, and the grayscale version is **8355711**.

A 20% lighter version of the original color is **13413782**, and **6375476** is the 20% darker color. If you saturate the color by 10%, you get **9793876**, and if you desaturate by 10%, it is **9798002**.

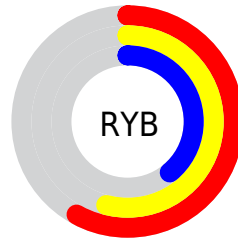
# Distribution



Red (58%)

Green (47%)

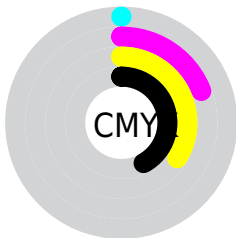
Blue (39%)



Red (58%)

Yellow (54%)

Blue (39%)

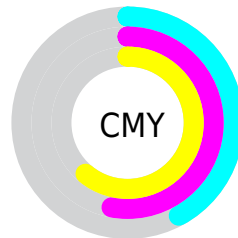


Cyan (0%)

Magenta (19%)

Yellow (34%)

Black (42%)



Cyan (42%)

Magenta (53%)

Yellow (61%)

# Brightness & Saturation Gradients

These gradients show how the Decimal color 9795939 changes by changing the brightness by 10 percent. The first figure shows a shift by +10% for each color and the second figure -10%.

Similar to the brightness gradients but the following saturation gradients show a change of the Decimal color 9795939 by changing the saturation by 10% instead.



■ 9795939

■ 9795939

16777215

■ 8085579

■ 13413782

■ 6375476

■ 15255985

■ 4731423

■ 16770508

■ 3218696

■ 16777192

■ 1770496

■ 0

■ 9795939

■ 9795939

■ 9793876

■ 9798002

■ 9791557

■ 9800321

■ 9789494

■ 9802384

■ 9787431

■ 9804447

■ 9785112

■ 9806766

■ 9783050

■ 9808828

■ 9781760

■ 9810891

■ 9813210

■ 9815273

# Harmonies

## Analogous

The Analogous color harmony consists of three colors that are next to each other on the color wheel.



10319213



9795939



8879712

# Triad

The Triadic color harmony groups three colors that are evenly spaced from another and form a triangle on the color wheel.



9795939



5736320



8682135

# Complementary

The Complementary color scheme is a pair of colors which are on the opposite of each other on the color wheel.



9795939



6520725

# Split Complementary

Split-complementary colors differ from the complementary color scheme. The scheme consists of three colors, the original color and two neighbors of the complement color.



7372701



9795939



5473935

# Square

The Square scheme is like the rectangle color scheme, but the four colors are evenly spaced on the color wheel.



9795939



6653553



6128538



9729420

# Rectangle

The Rectangle color scheme consists of four colors that form a rectangle on the color wheel.



9795939



8159586



6128538



8289178



# Sweetspot

The Sweet Spot groups the original color and five complimentary colors.



9795939



12761006



9790335



6380117



14737632



6381921



# Same Dimension

The Same Dimension uses a secret algorithm to generate beautiful new colors.



9795939



12752500



9802339



4867651



9059584



656384



# Inverse Universe

The Inverse Universe completely reimagines the original color for something new.



6520725



7643330



6514325



4409162



19850

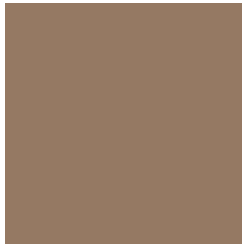


1546



# Previews

## White Background



This preview shows how the Decimal color 9795939 looks on a white background.

## Color Contrast Check

Large Text (above 18pt) WCAG AA ✓ Pass

Any Text WCAG AA × Fail

Large Text (above 18pt) WCAG AAA × Fail

Any Text WCAG AAA × Fail

# Black Background



This preview shows how the Decimal color 9795939 looks on a black background.

## Color Contrast Check

Large Text (above 18pt) WCAG AA ✓ Pass

Any Text WCAG AA ✓ Pass

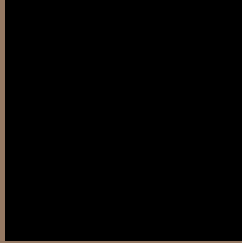
Large Text (above 18pt) WCAG AAA ✓ Pass

Any Text WCAG AAA × Fail

If you want to check with other color combinations, try the [Color Contrast Checker](#).



## Decimal 9795939 Background



This preview shows how black text looks on a background with the Decimal color 9795939.



This preview shows how white text looks on a background with the Decimal color 9795939.

# Color Blindness Simulation

Color vision deficiency is a very complex topic, and I could not describe the different causes any better than Wikipedia does, so if you want to learn more, you should check out their [article about color blindness](#).

## Dichromacy



**Original Color**  
9795939

**Protanopia**  
8814181

**Deuteranopia**  
9730403



**Tritanopia**  
9991550

# Trichromacy



**Original Color**  
9795939

**Protanomaly**  
9141348

**Deuteranomaly**  
9730403

**Tritanomaly**  
9926260

# Monochromacy



**Original Color**  
9795939

**Achromatopsia**  
8355711

**Achromatomaly**  
8879477

# CSS Examples

## Text

The CSS property to change the color of the text to Decimal 9795939 is called "color". The color property can be set on classes, ids or directly on the HTML element.

This example shows how text in the color #957963 looks like.

```
.text, #text, p{  
    color:#957963  
}
```

If you want to add a text shadow in that color use the text-shadow property, you can generate a text shadow directly with our [CSS Text Shadow Generator](#).

Here you see how black text with a 4 pixel #957963 colored shadow looks like.

```
.shadow{ text-shadow: 4px 4px 2px #957963
}
```

## Border

The CSS property to change the border of an element to Decimal 9795939 is called "border". The border property can be set on classes, ids or directly on the HTML element.

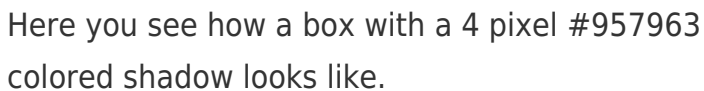
This example shows the color as border, it can be applied via the CSS property "border" or "border-color".

```
.border, #border, table{ border:4px solid
#957963 }
```

If only the border color should be changed use the property border-color.

```
.border{ border-color:#957963 }
```

If you want to add a box shadow in that color use:



Here you see how a box with a 4 pixel #957963 colored shadow looks like.

```
.boxshadow{ -moz-box-shadow:4px 4px 4px  
4px #957963; -webkit-box-shadow:4px 4px  
4px 4px #957963; box-shadow:4px 4px 4px  
4px #957963 }
```

# Background

The CSS property to change the background color of an element to Decimal 9795939 is called "background". The background property can be set on classes, ids or directly on the HTML element.

```
.background, #background, body{  
background:#957963 }
```

If only the background color should be changed can be used:

```
.background{ background-color:#957963 }
```

This example shows the color as background, it is applied via the CSS property "background".

To optimize and compress your CSS code, you can use our [online CSS compressor and optimizer](#) based on csstidy. If you want to create a linear or radial gradient as background or border, check our [CSS Gradient Generator](#).



Hey! You found this booklet interesting? Support Converting Colors with the new Membership Option!

The pro membership hides all ads, plus gives you double the colors in the color bucket, and more awesome pro features!

**[Learn more, Memberships starting at \\$2.50/m!](#)**

**Follow me  
on Twitter!**

@ConvertingColor