

# Converting Colors

Decimal(9858123)

Have a look what the booklet for  
Decimal(9858123) contains.

<b>Decimal(9858123)</b> .....	3
<i><b>Conversions</b></i> .....	4
<i><b>Details</b></i> .....	6
<i><b>Harmonies</b></i> .....	11
<i><b>Previews</b></i> .....	23
<i><b>Color Blindness Simulation</b></i> .....	26
<i><b>CSS Examples</b></i> .....	29

**Color**

**Decimal(9858123)**

# Conversions

## Conversions Part 1

<b>Format</b>	<b>Color</b>
Hex	966C4B
RGB	150, 108, 75
RGB Percent	59%, 42%, 29%
CMY	0.4118, 0.5765, 0.7059
CMYK	0.00, 0.28, 0.50, 0.41
HSL	26°, 33%, 44%
HSV	26°, 50%, 59%
XYZ	19.2102, 17.7172, 9.0639
YIQ	116.7960, 35.6250, -1.3590

# Conversions

## Conversions Part 2

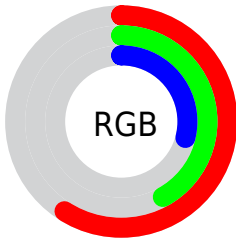
<b>Format</b>	<b>Color</b>
<b>RYB</b>	150, 134, 75
Decimal	9858123
CIELab	49.15, 12.60, 25.00
CIELCh	49, 28.000, 63.248
Yxy	17.7172, 0.4177, 0.3852
Android (android.graphics.Color)	4288048203 (0xFF966C4B)
YUV	116.7960, -20.6054, 29.1199
Hunter-Lab	42.0918, 7.8050, 16.6969

# Details

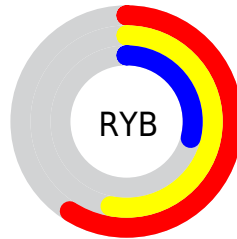
The Decimal color **9858123** is a dark color, and the websafe version is hex **996633**. A complement of this color would be **4945302**, and the grayscale version is **7697781**.

A 20% lighter version of the original color is **13541244**, and **6372382** is the 20% darker color. If you saturate the color by 10%, you get **9856060**, and if you desaturate by 10%, it is **9860186**.

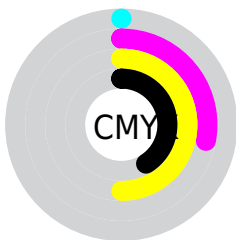
# Distribution



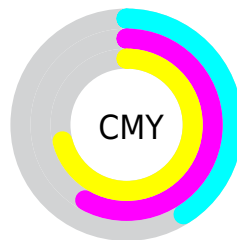
- Red (59%)
- Green (42%)
- Blue (29%)



- Red (59%)
- Yellow (53%)
- Blue (29%)



- Cyan (0%)
- Magenta (28%)
- Yellow (50%)
- Black (41%)



- Cyan (41%)
- Magenta (58%)
- Yellow (71%)

# Brightness & Saturation Gradients

These gradients show how the Decimal color 9858123 changes by changing the brightness by 10 percent. The first figure shows a shift by +10% for each color and the second figure -10%.

Similar to the brightness gradients but the following saturation gradients show a change of the Decimal color 9858123 by changing the saturation by 10% instead.





9858123



9858123

16777215



8082484



13541244



6372382



15448726



4663047



16766641



3084800



16774093



1310720



16777193



0



9858123



9858123



9856060



9860186



9853741



9862505

■ 9851678

■ 9864568

■ 9849359

■ 9866887

■ 9847296

■ 9868950

■ 9871013

■ 9873332

■ 9875395

■ 9877714

# Harmonies

## Analogous

The Analogous color harmony consists of three colors that are next to each other on the color wheel.



10642780



9858123



8549445

# Triad

The Triadic color harmony groups three colors that are evenly spaced from another and form a triangle on the color wheel.



9858123



2982519



8089244

# Complementary

The Complementary color scheme is a pair of colors which are on the opposite of each other on the color wheel.



9858123



4945302

# Split Complementary

Split-complementary colors differ from the complementary color scheme. The scheme consists of three colors, the original color and two neighbors of the complement color.



5732004



9858123



1278350

# Square

The Square scheme is like the rectangle color scheme, but the four colors are evenly spaced on the color wheel.



9858123



5013599



3046815



9791115

# Rectangle

The Rectangle color scheme consists of four colors that form a rectangle on the color wheel.



9858123



7502152



3046815



7369120



# Sweetspot

The Sweet Spot groups the original color and five complimentary colors.



9858123



12759717



9849718



6379343



14737632



6381921



# Same Dimension

The Same Dimension uses a secret algorithm to generate beautiful new colors.



9858123



12747086



9867595



4867651



9059584



656384



# Inverse Universe

The Inverse Universe completely reimagines the original color for something new.



4945302



5148610



4935830



4409162



19850

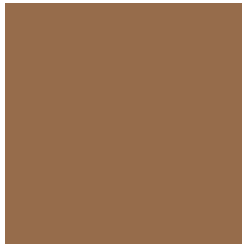


1546



# Previews

## White Background



This preview shows how the Decimal color 9858123 looks on a white background.

## Color Contrast Check

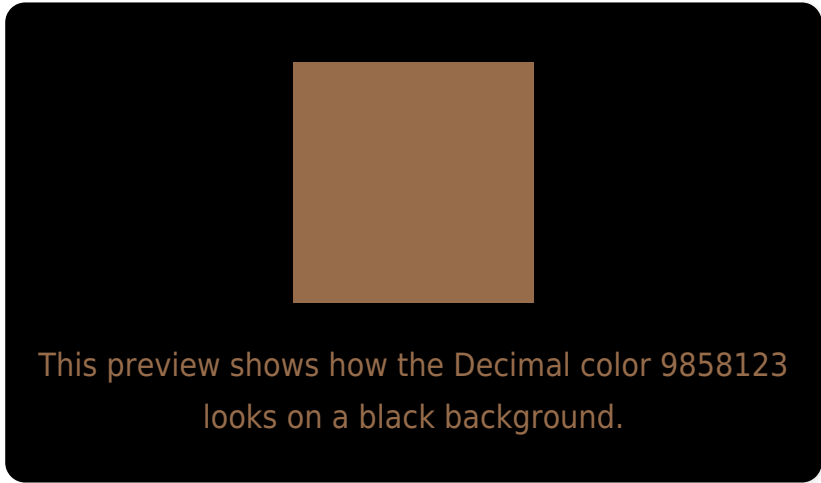
Large Text (above 18pt) WCAG AA ✓ Pass

Any Text WCAG AA ✓ Pass

Large Text (above 18pt) WCAG AAA ✓ Pass

Any Text WCAG AAA × Fail

# Black Background



## Color Contrast Check

Large Text (above 18pt) WCAG AA ✓ Pass

Any Text WCAG AA ✓ Pass

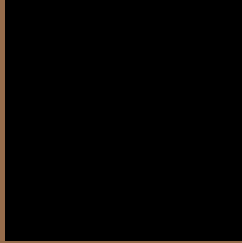
Large Text (above 18pt) WCAG AAA ✓ Pass

Any Text WCAG AAA × Fail

If you want to check with other color combinations, try the [Color Contrast Checker](#).



## Decimal 9858123 Background



This preview shows how black text looks on a background with the Decimal color 9858123.



This preview shows how white text looks on a background with the Decimal color 9858123.

# Color Blindness Simulation

Color vision deficiency is a very complex topic, and I could not describe the different causes any better than Wikipedia does, so if you want to learn more, you should check out their [article about color blindness](#).

## Dichromacy



**Original Color**  
9858123

**Protanopia**  
8353103

**Deuteranopia**  
9269322



**Tritanopia**  
10053487

# Trichromacy



**Original Color**

9858123

**Protanomaly**

8876622

**Deuteranomaly**

9465674

**Tritanomaly**

9988450

# Monochromacy



**Original Color**

9858123

**Achromatopsia**

7697781

**Achromatomaly**

8483430

# CSS Examples

## Text

The CSS property to change the color of the text to Decimal 9858123 is called "color". The color property can be set on classes, ids or directly on the HTML element.

This example shows how text in the color #966C4B looks like.

```
.text, #text, p{  
    color:#966C4B  
}
```

If you want to add a text shadow in that color use the text-shadow property, you can generate a text shadow directly with our [CSS Text Shadow Generator](#).

Here you see how black text with a 4 pixel #966C4B colored shadow looks like.

```
.shadow{ text-shadow: 4px 4px 2px #966C4B
}
```

## Border

The CSS property to change the border of an element to Decimal 9858123 is called "border". The border property can be set on classes, ids or directly on the HTML element.

This example shows the color as border, it can be applied via the CSS property "border" or "border-color".

```
.border, #border, table{ border:4px solid
#966C4B }
```

If only the border color should be changed use the property `border-color`.

```
.border{ border-color:#966C4B }
```

If you want to add a box shadow in that color use:

Here you see how a box with a 4 pixel #966C4B colored shadow looks like.

```
.boxshadow{ -moz-box-shadow:4px 4px 4px  
4px #966C4B; -webkit-box-shadow:4px 4px  
4px 4px #966C4B; box-shadow:4px 4px 4px  
4px #966C4B }
```

# Background

The CSS property to change the background color of an element to Decimal 9858123 is called "background". The background property can be set on classes, ids or directly on the HTML element.

```
.background, #background, body{  
background:#966C4B }
```

If only the background color should be changed can be used:

```
.background{ background-color:#966C4B }
```

This example shows the color as background, it is applied via the CSS property "background".

To optimize and compress your CSS code, you can use our [online CSS compressor and optimizer](#) based on csstidy. If you want to create a linear or radial gradient as background or border, check our [CSS Gradient Generator](#).



Hey! You found this booklet interesting? Support Converting Colors with the new Membership Option!

The pro membership hides all ads, plus gives you double the colors in the color bucket, and more awesome pro features!

**[Learn more, Memberships starting at \\$2.50/m!](#)**

**Follow me  
on Twitter!**

@ConvertingColor