

Converting Colors

Decimal(9924428)

Have a look what the booklet for
Decimal(9924428) contains.

Decimal(9924428)	3
<i>Conversions</i>	4
<i>Details</i>	6
<i>Harmonies</i>	11
<i>Previews</i>	23
<i>Color Blindness Simulation</i>	26
<i>CSS Examples</i>	29

Color

Decimal(9924428)

Conversions

Conversions Part 1

Format	Color
Hex	976F4C
RGB	151, 111, 76
RGB Percent	59%, 44%, 30%
CMY	0.4078, 0.5647, 0.7020
CMYK	0.00, 0.26, 0.50, 0.41
HSL	28°, 33%, 45%
HSV	28°, 50%, 59%
XYZ	19.7514, 18.4700, 9.3615
YIQ	118.9700, 35.0750, -2.4050

Conversions

Conversions Part 2

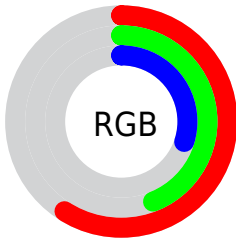
Format	Color
RYB	151, 142, 76
Decimal	9924428
CIELab	50.06, 11.41, 25.63
CIELCh	50, 28.052, 65.997
Yxy	18.4700, 0.4151, 0.3882
Android (android.graphics.Color)	4288114508 (0xFF976F4C)
YUV	118.9700, -21.1842, 28.0903
Hunter-Lab	42.9767, 6.8266, 17.1687

Details

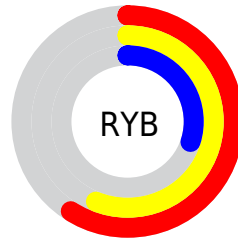
The Decimal color **9924428** is a dark color, and the websafe version is hex **996633**. A complement of this color would be **5010583**, and the grayscale version is **7829367**.

A 20% lighter version of the original color is **13607805**, and **6438687** is the 20% darker color. If you saturate the color by 10%, you get **9922365**, and if you desaturate by 10%, it is **9926491**.

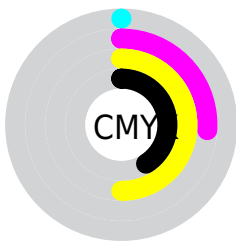
Distribution



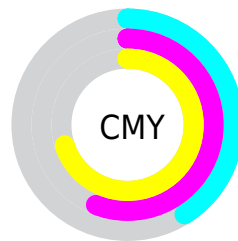
- Red (59%)
- Green (44%)
- Blue (30%)



- Red (59%)
- Yellow (56%)
- Blue (30%)



- Cyan (0%)
- Magenta (26%)
- Yellow (50%)
- Black (41%)



- Cyan (41%)
- Magenta (56%)
- Yellow (70%)

Brightness & Saturation Gradients

These gradients show how the Decimal color 9924428 changes by changing the brightness by 10 percent. The first figure shows a shift by +10% for each color and the second figure -10%.

Similar to the brightness gradients but the following saturation gradients show a change of the Decimal color 9924428 by changing the saturation by 10% instead.



9924428



9924428

16777215



8148789



13607805



6438687



15515287



4729096



16767666



3151104



16774862



1572864



16777194



0



9924428



9924428



9922365



9926491



9920302



9928554

■ 9918239

■ 9930617

■ 9916176

■ 9932680

■ 9914112

■ 9934744

■ 9913856

■ 9936807

■ 9938870

■ 9940933

■ 9942996

Harmonies

Analogous

The Analogous color harmony consists of three colors that are next to each other on the color wheel.



10774620



9924428



8550215

Triad

The Triadic color harmony groups three colors that are evenly spaced from another and form a triangle on the color wheel.



9924428



2917499



8417182

Complementary

The Complementary color scheme is a pair of colors which are on the opposite of each other on the color wheel.



9924428



5010583

Split Complementary

Split-complementary colors differ from the complementary color scheme. The scheme consists of three colors, the original color and two neighbors of the complement color.



6125734



9924428



1606546

Square

The Square scheme is like the rectangle color scheme, but the four colors are evenly spaced on the color wheel.



9924428



5014115



3440546



10053771

Rectangle

The Rectangle color scheme consists of four colors that form a rectangle on the color wheel.



9924428



7502923



3440546



7697058

Sweetspot

The Sweet Spot groups the original color and five complimentary colors.



9924428



12891559



9915508



6511186



14935011



6513507

Same Dimension

The Same Dimension uses a secret algorithm to generate beautiful new colors.



9924428



12879439



9934156



5064773



9191680



853504

Inverse Universe

The Inverse Universe completely reimagines the original color for something new.



5010583



5213636



5000855



4540749



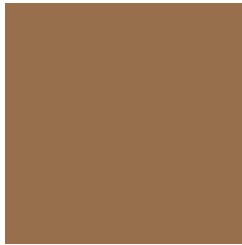
19340



1805

Previews

White Background



This preview shows how the Decimal color 9924428 looks on a white background.

Color Contrast Check

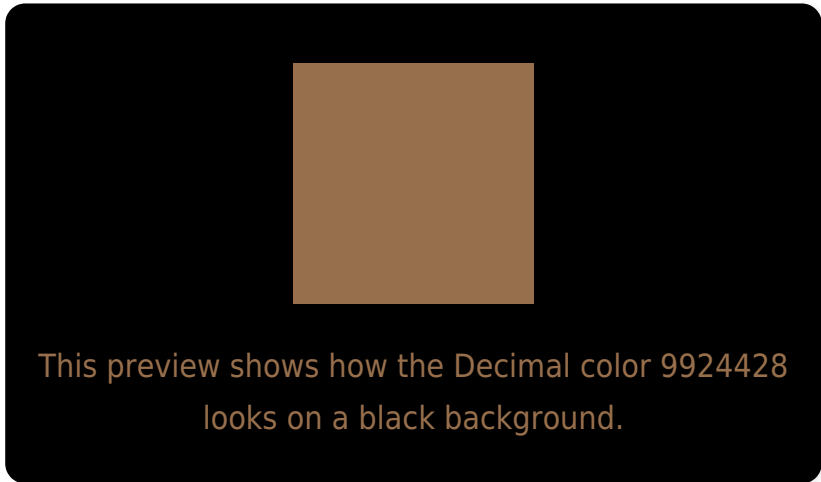
Large Text (above 18pt) WCAG AA ✓ Pass

Any Text WCAG AA × Fail

Large Text (above 18pt) WCAG AAA × Fail

Any Text WCAG AAA × Fail

Black Background



Color Contrast Check

Large Text (above 18pt) WCAG AA ✓ Pass

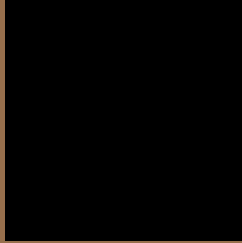
Any Text WCAG AA ✓ Pass

Large Text (above 18pt) WCAG AAA ✓ Pass

Any Text WCAG AAA × Fail

If you want to check with other color combinations, try the [Color Contrast Checker](#).

Decimal 9924428 Background



This preview shows how black text looks on a background with the Decimal color 9924428.



This preview shows how white text looks on a background with the Decimal color 9924428.

Color Blindness Simulation

Color vision deficiency is a very complex topic, and I could not describe the different causes any better than Wikipedia does, so if you want to learn more, you should check out their [article about color blindness](#).

Dichromacy



Original Color
9924428

Protanopia
8550223

Deuteranopia
9466443



Tritanopia
10119794

Trichromacy



Original Color
9924428

Protanomaly
9073742

Deuteranomaly
9662795

Tritanomaly
10054756

Monochromacy



Original Color
9924428

Achromatopsia
7829367

Achromatomaly
8615015

CSS Examples

Text

The CSS property to change the color of the text to Decimal 9924428 is called "color". The color property can be set on classes, ids or directly on the HTML element.

This example shows how text in the color #976F4C looks like.

```
.text, #text, p{  
    color:#976F4C  
}
```

If you want to add a text shadow in that color use the text-shadow property, you can generate a text shadow directly with our [CSS Text Shadow Generator](#).

Here you see how black text with a 4 pixel #976F4C colored shadow looks like.

```
.shadow{ text-shadow: 4px 4px 2px #976F4C
}
```

Border

The CSS property to change the border of an element to Decimal 9924428 is called "border". The border property can be set on classes, ids or directly on the HTML element.

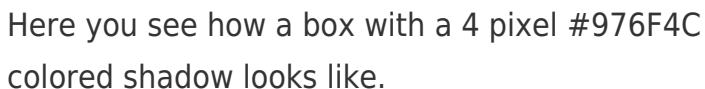
This example shows the color as border, it can be applied via the CSS property "border" or "border-color".

```
.border, #border, table{ border:4px solid
#976F4C }
```

If only the border color should be changed use the property `border-color`.

```
.border{ border-color:#976F4C }
```

If you want to add a box shadow in that color use:



Here you see how a box with a 4 pixel #976F4C colored shadow looks like.

```
.boxshadow{ -moz-box-shadow:4px 4px 4px  
4px #976F4C; -webkit-box-shadow:4px 4px  
4px 4px #976F4C; box-shadow:4px 4px 4px  
4px #976F4C }
```

Background

The CSS property to change the background color of an element to Decimal 9924428 is called "background". The background property can be set on classes, ids or directly on the HTML element.

```
.background, #background, body{  
background:#976F4C }
```

If only the background color should be changed can be used:

```
.background{ background-color:#976F4C }
```

This example shows the color as background, it is applied via the CSS property "background".

To optimize and compress your CSS code, you can use our [online CSS compressor and optimizer](#) based on csstidy. If you want to create a linear or radial gradient as background or border, check our [CSS Gradient Generator](#).

Hey! You found this booklet interesting? Support Converting Colors with the new Membership Option!

The pro membership hides all ads, plus gives you double the colors in the color bucket, and more awesome pro features!

[Learn more, Memberships starting at \\$2.50/m!](#)

**Follow me
on Twitter!**

@ConvertingColor