

Converting Colors

Hex(1F160A)

Have a look what the booklet for
Hex(1F160A) contains.

Hex(1F160A)	3
<i>Conversions</i>	4
<i>Details</i>	6
<i>Harmonies</i>	11
<i>Previews</i>	23
<i>Color Blindness Simulation</i>	26
<i>CSS Examples</i>	29

Color

Hex(1F160A)

Conversions

Conversions Part 1

Format	Color
Hex	1F160A
RGB	31, 22, 10
RGB Percent	12%, 9%, 4%
CMY	0.8784, 0.9137, 0.9608
CMYK	0.00, 0.29, 0.68, 0.88
HSL	34°, 51%, 8%
HSV	34°, 68%, 12%
XYZ	0.9068, 0.8870, 0.4106
YIQ	23.3230, 9.2160, -1.8240

Conversions

Conversions Part 2

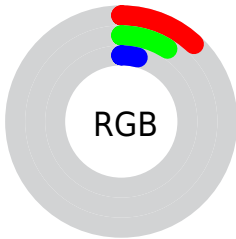
Format	Color
RYB	26, 31, 10
Decimal	2037258
CIELab	8.01, 2.54, 7.94
CIElCh	8, 8.339, 72.250
Yxy	0.8870, 0.4113, 0.4024
Android (android.graphics.Color)	4280227338 (0xFF1F160A)
YUV	23.3230, -6.5682, 6.7327
Hunter-Lab	9.4183, 0.7036, 4.0081

Details

The Hex color **1F160A** is a dark color, and the websafe version is hex **000000**. A complement of this color would be **0A131F**, and the grayscale version is **171717**.

A 20% lighter version of the original color is **4B4036**, and **000000** is the 20% darker color. If you saturate the color by 10%, you get **1F1507**, and if you desaturate by 10%, it is **1F170D**.

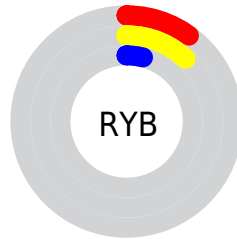
Distribution



Red (12%)

Green (9%)

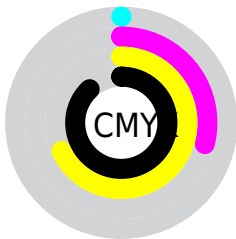
Blue (4%)



Red (10%)

Yellow (12%)

Blue (4%)

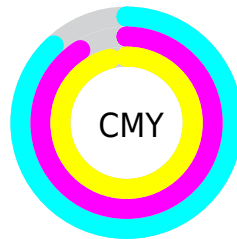


Cyan (0%)

Magenta (29%)

Yellow (68%)

Black (88%)



Cyan (88%)

Magenta (91%)

Yellow (96%)

Brightness & Saturation Gradients

These gradients show how the Hex color 1F160A changes by changing the brightness by 10 percent. The first figure shows a shift by +10% for each color and the second figure -10%.

Similar to the brightness gradients but the following saturation gradients show a change of the Hex color 1F160A by changing the saturation by 10% instead.

■ 1F160A

■ 1F160A

■ FFF7EA

■ 000000

■ 4B4036

■ 63584D

■ 7C7065

■ 96897E

■ B0A498

■ CCBFB2

■ E8DBCE

■ 1F160A

■ 1F160A

■ 1F1507

■ 1F170D

■ 1F1304

■ 1F1910

■ 1F1201

■ 1F1A13

■ 1F1200

■ 1F1B16

■ 1F1D1A

■ 1F1E1D

■ 1F1F20

■ 1F2123

■ 1F2226

Harmonies

Analogous

The Analogous color harmony consists of three colors that are next to each other on the color wheel.



22140F



1F160A



1A1809

Triad

The Triadic color harmony groups three colors that are evenly spaced from another and form a triangle on the color wheel.



1F160A



061B1A



1B1520

Complementary

The Complementary color scheme is a pair of colors which are on the opposite of each other on the color wheel.



1F160A



0A131F

Split Complementary

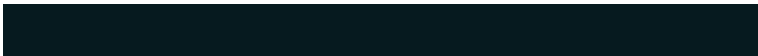
Split-complementary colors differ from the complementary color scheme. The scheme consists of three colors, the original color and two neighbors of the complement color.



141722



1F160A



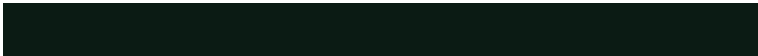
061A1F

Square

The Square scheme is like the rectangle color scheme, but the four colors are evenly spaced on the color wheel.



1F160A



0B1B14



0C1922



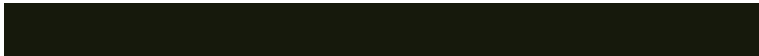
20141B

Rectangle

The Rectangle color scheme consists of four colors that form a rectangle on the color wheel.



1F160A



16190C



0C1922



191621

Sweetspot

The Sweet Spot groups the original color and five complimentary colors.



1F160A



292521



1F0A13



141210



949494



141414

Same Dimension

The Same Dimension uses a secret algorithm to generate beautiful new colors.



1F160A



291B08



1E1F0A



0F0F0E



4F2D00



CF7600

Inverse Universe

The Inverse Universe completely reimagines the original color for something new.



0A131F



081629



0B0A1F



0E0E0F



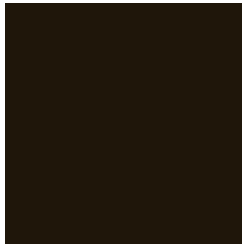
00224F



0059CF

Previews

White Background



This preview shows how the Hex color 1F160A looks on a white background.

Color Contrast Check

Large Text (above 18pt) WCAG AA ✓ Pass

Any Text WCAG AA ✓ Pass

Large Text (above 18pt) WCAG AAA ✓ Pass

Any Text WCAG AAA ✓ Pass

Black Background



Color Contrast Check

Large Text (above 18pt) WCAG AA × Fail

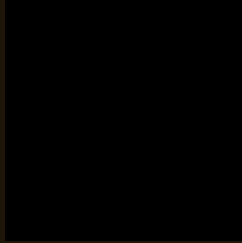
Any Text WCAG AA × Fail

Large Text (above 18pt) WCAG AAA × Fail

Any Text WCAG AAA × Fail

If you want to check with other color combinations, try the [Color Contrast Checker](#).

Hex 1F160A Background



This preview shows how black text looks on a background with the Hex color 1F160A.



This preview shows how white text looks on a background with the Hex color 1F160A.

Color Blindness Simulation

Color vision deficiency is a very complex topic, and I could not describe the different causes any better than Wikipedia does, so if you want to learn more, you should check out their [article about color blindness](#).

Dichromacy

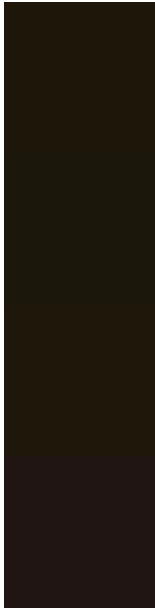


Original Color
1F160A

Protanopia
1A180B

Deuteranopia
1E170A

Trichromacy



Original Color

1F160A

Protanomaly

1C170B

Deuteranomaly

1E170A

Tritanomaly

201512

Monochromacy



Original Color

1F160A

Achromatopsia

171717

Achromatomaly

1A1712

CSS Examples

Text

The CSS property to change the color of the text to Hex 1F160A is called "color". The color property can be set on classes, ids or directly on the HTML element.

This example shows how text in the color #1F160A looks like.

```
.text, #text, p{  
    color:#1F160A  
}
```

If you want to add a text shadow in that color use the text-shadow property, you can generate a text shadow directly with our [CSS Text Shadow Generator](#).

Here you see how black text with a 4 pixel #1F160A colored shadow looks like.

```
.shadow{ text-shadow: 4px 4px 2px #1F160A
}
```

Border

The CSS property to change the border of an element to Hex 1F160A is called "border". The border property can be set on classes, ids or directly on the HTML element.

This example shows the color as border, it can be applied via the CSS property "border" or "border-color".

```
.border, #border, table{ border:4px solid
#1F160A }
```

If only the border color should be changed use the property `border-color`.

```
.border{ border-color:#1F160A }
```

If you want to add a box shadow in that color use:

Here you see how a box with a 4 pixel #1F160A colored shadow looks like.

```
.boxshadow{ -moz-box-shadow:4px 4px 4px  
4px #1F160A; -webkit-box-shadow:4px 4px  
4px 4px #1F160A; box-shadow:4px 4px 4px  
4px #1F160A }
```

Background

The CSS property to change the background color of an element to Hex 1F160A is called "background". The background property can be set on classes, ids or directly on the HTML element.

```
.background, #background, body{  
background:#1F160A }
```

If only the background color should be changed can be used:

```
.background{ background-color:#1F160A }
```

This example shows the color as background, it is applied via the CSS property "background".

To optimize and compress your CSS code, you can use our [online CSS compressor and optimizer](#) based on csstidy. If you want to create a linear or radial gradient as background or border, check our [CSS Gradient Generator](#).

Hey! You found this booklet interesting? Support Converting Colors with the new Membership Option!

The pro membership hides all ads, plus gives you double the colors in the color bucket, and more awesome pro features!

[Learn more, Memberships starting at \\$2.50/m!](#)

**Follow me
on Twitter!**

@ConvertingColor