

# Converting Colors

Hex(21150D)

Have a look what the booklet for  
Hex(21150D) contains.

<b>Hex(21150D)</b> .....	3
<i><b>Conversions</b></i> .....	4
<i><b>Details</b></i> .....	6
<i><b>Harmonies</b></i> .....	11
<i><b>Previews</b></i> .....	23
<i><b>Color Blindness Simulation</b></i> .....	26
<i><b>CSS Examples</b></i> .....	29

# Color

Hex(21150D)

# Conversions

## Conversions Part 1

Format	Color
Hex	21150D
RGB	33, 21, 13
RGB Percent	13%, 8%, 5%
CMY	0.8706, 0.9176, 0.9490
CMYK	0.00, 0.36, 0.61, 0.87
HSL	24°, 43%, 9%
HSV	24°, 61%, 13%
XYZ	0.9680, 0.8887, 0.5013
YIQ	23.6760, 9.7200, 0.0560

# Conversions

## Conversions Part 2

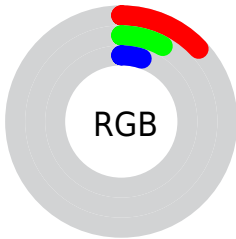
<b>Format</b>	<b>Color</b>
<b>RYB</b>	33, 26, 13
Decimal	2168077
CIELab	8.03, 4.81, 6.67
CIELCh	8, 8.226, 54.193
Yxy	0.8887, 0.4105, 0.3769
Android (android.graphics.Color)	4280358157 (0xFF21150D)
YUV	23.6760, -5.2633, 8.1771
Hunter-Lab	9.4272, 1.8312, 3.4463

# Details

The Hex color **21150D** is a dark color, and the websafe version is hex **000000**. A complement of this color would be **0D1921**, and the grayscale version is **181818**.

A 20% lighter version of the original color is **4D3F38**, and **000000** is the 20% darker color. If you saturate the color by 10%, you get **21130A**, and if you desaturate by 10%, it is **211710**.

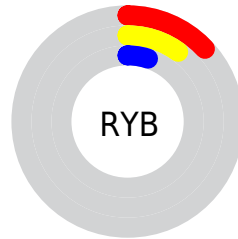
# Distribution



Red (13%)

Green (8%)

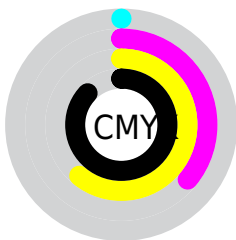
Blue (5%)



Red (13%)

Yellow (10%)

Blue (5%)

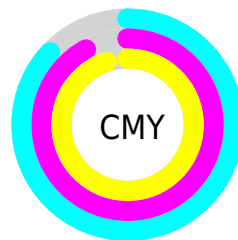


Cyan (0%)

Magenta (36%)

Yellow (61%)

Black (87%)



Cyan (87%)

Magenta (92%)

Yellow (95%)

# Brightness & Saturation Gradients

These gradients show how the Hex color 21150D changes by changing the brightness by 10 percent. The first figure shows a shift by +10% for each color and the second figure -10%.

Similar to the brightness gradients but the following saturation gradients show a change of the Hex color 21150D by changing the saturation by 10% instead.



■ 21150D

■ 21150D

■ FFF6ED

■ 000000

■ 4D3F38

■ 66574F

■ 7F6F67

■ 998880

■ B4A29A

■ CFBEB5

■ ECD9D0

■ 21150D

■ 21150D

■ 21130A

■ 211710

■ 211106

■ 211914

■ 210F03

■ 211B17

■ 210D00

■ 211D1A

■ 211F1E

■ 212121

■ 212324

■ 212527

■ 21272B

# Harmonies

## Analogous

The Analogous color harmony consists of three colors that are next to each other on the color wheel.



231413



21150D



1D1709

# Triad

The Triadic color harmony groups three colors that are evenly spaced from another and form a triangle on the color wheel.



21150D



091B16



171721

# Complementary

The Complementary color scheme is a pair of colors which are on the opposite of each other on the color wheel.



21150D



0D1921

# Split Complementary

Split-complementary colors differ from the complementary color scheme. The scheme consists of three colors, the original color and two neighbors of the complement color.



0F1822



21150D



061B1C

# Square

The Square scheme is like the rectangle color scheme, but the four colors are evenly spaced on the color wheel.



21150D



101A10



081A20



1E151E

# Rectangle

The Rectangle color scheme consists of four colors that form a rectangle on the color wheel.



21150D



1A180A



081A20



141722



# Sweetspot

The Sweet Spot groups the original color and five complimentary colors.



21150D



2B2724



210D19



171412



969696



171717



# Same Dimension

The Same Dimension uses a secret algorithm to generate beautiful new colors.



21150D



2B180C



211F0D



0F0E0E



4F2000



CF5300



# Inverse Universe

The Inverse Universe completely reimagines the original color for something new.



0D1921



0C1F2B



0D0F21



0E0F0F



002F4F

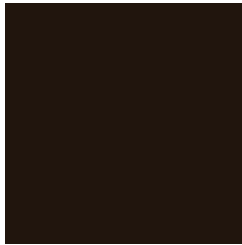


007CCF



# Previews

## White Background



This preview shows how the Hex color 21150D looks on a white background.

## Color Contrast Check

Large Text (above 18pt) WCAG AA ✓ Pass

Any Text WCAG AA ✓ Pass

Large Text (above 18pt) WCAG AAA ✓ Pass

Any Text WCAG AAA ✓ Pass

# Black Background



## Color Contrast Check

Large Text (above 18pt) WCAG AA × Fail

Any Text WCAG AA × Fail

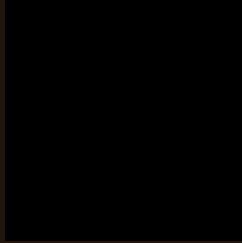
Large Text (above 18pt) WCAG AAA × Fail

Any Text WCAG AAA × Fail

If you want to check with other color combinations, try the [Color Contrast Checker](#).



## Hex 21150D Background



This preview shows how black text looks on a background with the Hex color 21150D.



This preview shows how white text looks on a background with the Hex color 21150D.

# Color Blindness Simulation

Color vision deficiency is a very complex topic, and I could not describe the different causes any better than Wikipedia does, so if you want to learn more, you should check out their [article about color blindness](#).

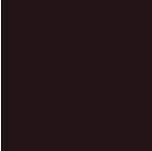
## Dichromacy



**Original Color**  
21150D

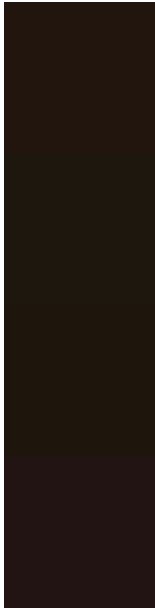
**Protanopia**  
1A180E

**Deuteranopia**  
1D170D



**Tritanopia**  
221415

# Trichromacy



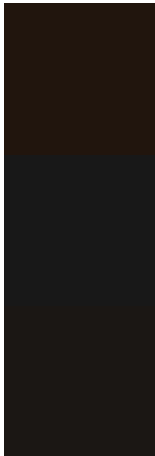
**Original Color**  
21150D

**Protanomaly**  
1D170E

**Deuteranomaly**  
1E160D

**Tritanomaly**  
221412

# Monochromacy



**Original Color**  
21150D

**Achromatopsia**  
181818

**Achromatomaly**  
1B1714

# CSS Examples

## Text

The CSS property to change the color of the text to Hex 21150D is called "color". The color property can be set on classes, ids or directly on the HTML element.

This example shows how text in the color #21150D looks like.

```
.text, #text, p{  
    color:#21150D  
}
```

If you want to add a text shadow in that color use the text-shadow property, you can generate a text shadow directly with our [CSS Text Shadow Generator](#).

Here you see how black text with a 4 pixel #21150D colored shadow looks like.

```
.shadow{ text-shadow: 4px 4px 2px #21150D
}
```

## Border

The CSS property to change the border of an element to Hex 21150D is called "border". The border property can be set on classes, ids or directly on the HTML element.

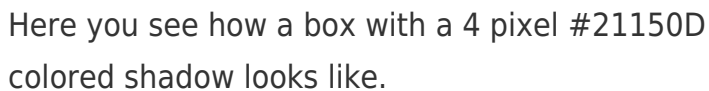
This example shows the color as border, it can be applied via the CSS property "border" or "border-color".

```
.border, #border, table{ border:4px solid
#21150D }
```

If only the border color should be changed use the property `border-color`.

```
.border{ border-color:#21150D }
```

If you want to add a box shadow in that color use:



Here you see how a box with a 4 pixel #21150D colored shadow looks like.

```
.boxshadow{ -moz-box-shadow:4px 4px 4px  
4px #21150D; -webkit-box-shadow:4px 4px  
4px 4px #21150D; box-shadow:4px 4px 4px  
4px #21150D }
```

# Background

The CSS property to change the background color of an element to Hex 21150D is called "background". The background property can be set on classes, ids or directly on the HTML element.

```
.background, #background, body{  
background:#21150D }
```

If only the background color should be changed can be used:

```
.background{ background-color:#21150D }
```

This example shows the color as background, it is applied via the CSS property "background".

To optimize and compress your CSS code, you can use our [online CSS compressor and optimizer](#) based on csstidy. If you want to create a linear or radial gradient as background or border, check our [CSS Gradient Generator](#).



# Hey! You found this booklet interesting? Support Converting Colors with the new Membership Option!

The pro membership hides all ads, plus gives you double the colors in the color bucket, and more awesome pro features!

**[Learn more, Memberships starting at \\$2.50/m!](#)**

**Follow me  
on Twitter!**

@ConvertingColor