

Converting Colors

Hex(21160D)

Have a look what the booklet for
Hex(21160D) contains.

| | |
|--|----|
| Hex(21160D) | 3 |
| <i>Conversions</i> | 4 |
| <i>Details</i> | 6 |
| <i>Harmonies</i> | 11 |
| <i>Previews</i> | 23 |
| <i>Color Blindness Simulation</i> | 26 |
| <i>CSS Examples</i> | 29 |

Color

Hex(21160D)

Conversions

Conversions Part 1

| Format | Color |
|-------------|--------------------------|
| Hex | 21160D |
| RGB | 33, 22, 13 |
| RGB Percent | 13%, 9%, 5% |
| CMY | 0.8706, 0.9137, 0.9490 |
| CMYK | 0.00, 0.33, 0.61, 0.87 |
| HSL | 27°, 43%, 9% |
| HSV | 27°, 61%, 13% |
| XYZ | 0.9868, 0.9262, 0.5075 |
| YIQ | 24.2630, 9.4450, -0.4670 |

Conversions

Conversions Part 2

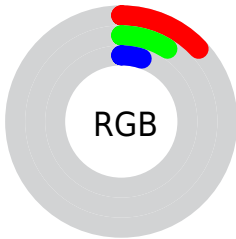
| Format | Color |
|-------------------------------------|--|
| RYB | 33, 29, 13 |
| Decimal | 2168333 |
| CIELab | 8.36, 4.07, 7.16 |
| CIELCh | 8, 8.233, 60.363 |
| Yxy | 0.9262, 0.4077, 0.3827 |
| Android (android.graphics.Color) | 4280358413 (0xFF21160D) |
| YUV | 24.2630, -5.5527, 7.6623 |
| Hunter-Lab | 9.6240, 1.4598, 3.6100 |

Details

The Hex color **21160D** is a dark color, and the websafe version is hex **000000**. A complement of this color would be **0D1821**, and the grayscale version is **181818**.

A 20% lighter version of the original color is **4D4038**, and **000000** is the 20% darker color. If you saturate the color by 10%, you get **21140A**, and if you desaturate by 10%, it is **211810**.

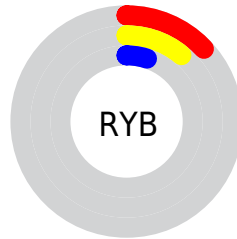
Distribution



Red (13%)

Green (9%)

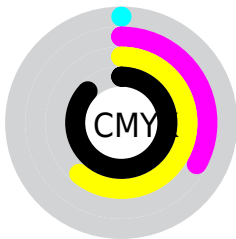
Blue (5%)



Red (13%)

Yellow (11%)

Blue (5%)

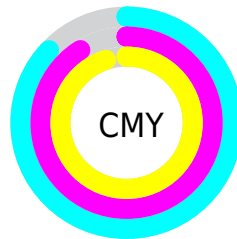


Cyan (0%)

Magenta (33%)

Yellow (61%)

Black (87%)



Cyan (87%)

Magenta (91%)

Yellow (95%)

Brightness & Saturation Gradients

These gradients show how the Hex color 21160D changes by changing the brightness by 10 percent. The first figure shows a shift by +10% for each color and the second figure -10%.

Similar to the brightness gradients but the following saturation gradients show a change of the Hex color 21160D by changing the saturation by 10% instead.

■ 21160D

■ 21160D

■ FFF7ED

■ 000000

■ 4D4038

■ 66584F

■ 7F7067

■ 998A80

■ B4A49A

■ CFBFB5

■ ECDBD0

■ 21160D

■ 21160D

■ 21140A

■ 211810

■ 211206

■ 211A14

■ 211103

■ 211B17

■ 210F00

■ 211D1A

■ 211F1E

■ 212121

■ 212324

■ 212527

■ 21262B

Harmonies

Analogous

The Analogous color harmony consists of three colors that are next to each other on the color wheel.



231513



21160D



1D180A

Triad

The Triadic color harmony groups three colors that are evenly spaced from another and form a triangle on the color wheel.



21160D



091B18



191722

Complementary

The Complementary color scheme is a pair of colors which are on the opposite of each other on the color wheel.



21160D



0D1821

Split Complementary

Split-complementary colors differ from the complementary color scheme. The scheme consists of three colors, the original color and two neighbors of the complement color.



111923



21160D



071B1E

Square

The Square scheme is like the rectangle color scheme, but the four colors are evenly spaced on the color wheel.



21160D



101B12



0A1A22



1F151E

Rectangle

The Rectangle color scheme consists of four colors that form a rectangle on the color wheel.



21160D



19190C



0A1A22



171722

Sweetspot

The Sweet Spot groups the original color and five complimentary colors.



21160D



2B2724



210D18



171412



969696



171717

Same Dimension

The Same Dimension uses a secret algorithm to generate beautiful new colors.



21160D



2B1A0C



21200D



0F0E0E



4F2400



CF5D00

Inverse Universe

The Inverse Universe completely reimagines the original color for something new.



0D1821



0C1D2B



0D0E21



0E0F0F



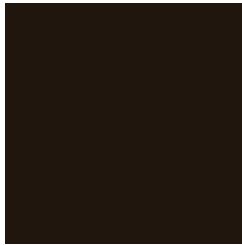
002B4F



0072CF

Previews

White Background



This preview shows how the Hex color 21160D looks on a white background.

Color Contrast Check

Large Text (above 18pt) WCAG AA ✓ Pass

Any Text WCAG AA ✓ Pass

Large Text (above 18pt) WCAG AAA ✓ Pass

Any Text WCAG AAA ✓ Pass

Black Background



Color Contrast Check

Large Text (above 18pt) WCAG AA × Fail

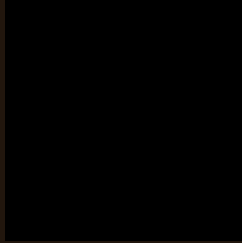
Any Text WCAG AA × Fail

Large Text (above 18pt) WCAG AAA × Fail

Any Text WCAG AAA × Fail

If you want to check with other color combinations, try the [Color Contrast Checker](#).

Hex 21160D Background



This preview shows how black text looks on a background with the Hex color 21160D.

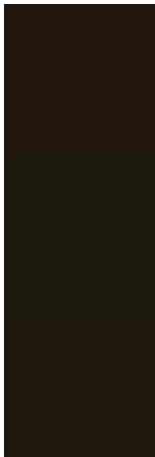


This preview shows how white text looks on a background with the Hex color 21160D.

Color Blindness Simulation

Color vision deficiency is a very complex topic, and I could not describe the different causes any better than Wikipedia does, so if you want to learn more, you should check out their [article about color blindness](#).

Dichromacy



Original Color
21160D

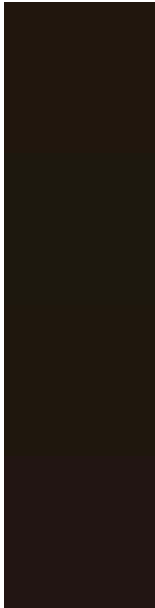
Protanopia
1B190E

Deuteranopia
1E170D



Tritanopia
221516

Trichromacy



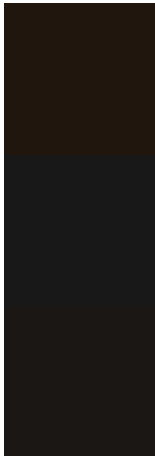
Original Color
21160D

Protanomaly
1D180E

Deuteranomaly
1F170D

Tritanomaly
221513

Monochromacy



Original Color
21160D

Achromatopsia
181818

Achromatomaly
1B1714

CSS Examples

Text

The CSS property to change the color of the text to Hex 21160D is called "color". The color property can be set on classes, ids or directly on the HTML element.

This example shows how text in the color #21160D looks like.

```
.text, #text, p{  
    color:#21160D  
}
```

If you want to add a text shadow in that color use the text-shadow property, you can generate a text shadow directly with our [CSS Text Shadow Generator](#).

Here you see how black text with a 4 pixel #21160D colored shadow looks like.

```
.shadow{ text-shadow: 4px 4px 2px #21160D
}
```

Border

The CSS property to change the border of an element to Hex 21160D is called "border". The border property can be set on classes, ids or directly on the HTML element.

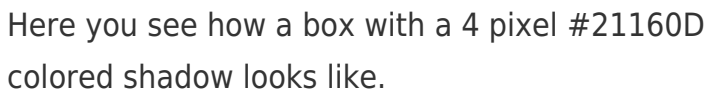
This example shows the color as border, it can be applied via the CSS property "border" or "border-color".

```
.border, #border, table{ border:4px solid
#21160D }
```

If only the border color should be changed use the property `border-color`.

```
.border{ border-color:#21160D }
```

If you want to add a box shadow in that color use:



Here you see how a box with a 4 pixel #21160D colored shadow looks like.

```
.boxshadow{ -moz-box-shadow:4px 4px 4px  
4px #21160D; -webkit-box-shadow:4px 4px  
4px 4px #21160D; box-shadow:4px 4px 4px  
4px #21160D }
```

Background

The CSS property to change the background color of an element to Hex 21160D is called "background". The background property can be set on classes, ids or directly on the HTML element.

```
.background, #background, body{  
background:#21160D }
```

If only the background color should be changed can be used:

```
.background{ background-color:#21160D }
```

This example shows the color as background, it is applied via the CSS property "background".

To optimize and compress your CSS code, you can use our [online CSS compressor and optimizer](#) based on csstidy. If you want to create a linear or radial gradient as background or border, check our [CSS Gradient Generator](#).

Hey! You found this booklet interesting? Support Converting Colors with the new Membership Option!

The pro membership hides all ads, plus gives you double the colors in the color bucket, and more awesome pro features!

[Learn more, Memberships starting at \\$2.50/m!](#)

**Follow me
on Twitter!**

@ConvertingColor