

Converting Colors

Hex(22170C)

Have a look what the booklet for
Hex(22170C) contains.

Hex(22170C)	3
<i>Conversions</i>	4
<i>Details</i>	6
<i>Harmonies</i>	11
<i>Previews</i>	23
<i>Color Blindness Simulation</i>	26
<i>CSS Examples</i>	29

Color

Hex(22170C)

Conversions

Conversions Part 1

Format	Color
Hex	22170C
RGB	34, 23, 12
RGB Percent	13%, 9%, 5%
CMY	0.8667, 0.9098, 0.9529
CMYK	0.00, 0.32, 0.65, 0.87
HSL	30°, 48%, 9%
HSV	30°, 65%, 13%
XYZ	1.0324, 0.9794, 0.4825
YIQ	25.0350, 10.0870, -1.0890

Conversions

Conversions Part 2

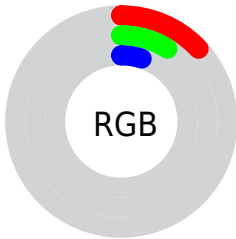
Format	Color
RYB	34, 34, 12
Decimal	2234124
CIELab	8.82, 3.76, 8.30
CIELCh	9, 9.114, 65.662
Yxy	0.9794, 0.4139, 0.3927
Android (android.graphics.Color)	4280424204 (0xFF22170C)
YUV	25.0350, -6.4263, 7.8623
Hunter-Lab	9.8966, 1.3028, 4.0372

Details

The Hex color **22170C** is a dark color, and the websafe version is hex **000000**. A complement of this color would be **0C1722**, and the grayscale version is **191919**.

A 20% lighter version of the original color is **4F4237**, and **000000** is the 20% darker color. If you saturate the color by 10%, you get **221509**, and if you desaturate by 10%, it is **22190F**.

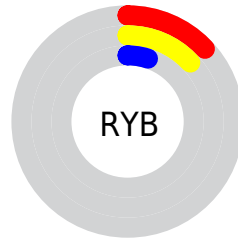
Distribution



Red (13%)

Green (9%)

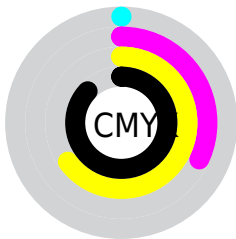
Blue (5%)



Red (13%)

Yellow (13%)

Blue (5%)

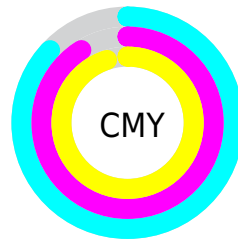


Cyan (0%)

Magenta (32%)

Yellow (65%)

Black (87%)



Cyan (87%)

Magenta (91%)

Yellow (95%)

Brightness & Saturation Gradients

These gradients show how the Hex color 22170C changes by changing the brightness by 10 percent. The first figure shows a shift by +10% for each color and the second figure -10%.

Similar to the brightness gradients but the following saturation gradients show a change of the Hex color 22170C by changing the saturation by 10% instead.

■ 22170C

■ 22170C

■ FFF9EC

■ 000000

■ 4F4237

■ 67594E

■ 807166

■ 9A8B7F

■ B5A599

■ D1C0B4

■ EDDCCF

■ 22170C

■ 22170C

■ 221509

■ 22190F

■ 221405

■ 221A13

■ 221202

■ 221C16

■ 221100

■ 221E1A

■ 22201D

■ 222120

■ 222324

■ 222527

■ 22262B

Harmonies

Analogous

The Analogous color harmony consists of three colors that are next to each other on the color wheel.



251512



22170C



1D190A

Triad

The Triadic color harmony groups three colors that are evenly spaced from another and form a triangle on the color wheel.



22170C



071D1A



1B1723

Complementary

The Complementary color scheme is a pair of colors which are on the opposite of each other on the color wheel.



22170C



0C1722

Split Complementary

Split-complementary colors differ from the complementary color scheme. The scheme consists of three colors, the original color and two neighbors of the complement color.



131925



22170C



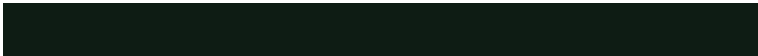
051C20

Square

The Square scheme is like the rectangle color scheme, but the four colors are evenly spaced on the color wheel.



22170C



0E1C14



0A1B24



22151E

Rectangle

The Rectangle color scheme consists of four colors that form a rectangle on the color wheel.



22170C



191A0C



0A1B24



191824

Sweetspot

The Sweet Spot groups the original color and five complimentary colors.



22170C



2B2723



220C17



171412



969696



171717

Same Dimension

The Same Dimension uses a secret algorithm to generate beautiful new colors.



22170C



2B1A0A



22220C



121110



522900



D16900

Inverse Universe

The Inverse Universe completely reimagines the original color for something new.



0C1722



0A1A2B



0C0C22



101112



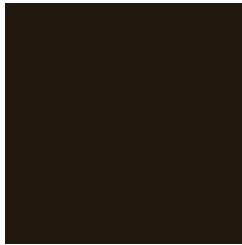
002952



0069D1

Previews

White Background



This preview shows how the Hex color 22170C looks on a white background.

Color Contrast Check

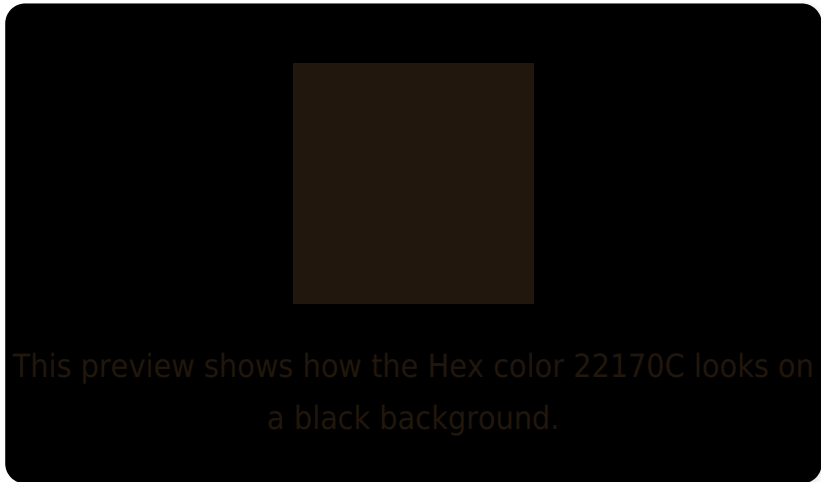
Large Text (above 18pt) WCAG AA ✓ Pass

Any Text WCAG AA ✓ Pass

Large Text (above 18pt) WCAG AAA ✓ Pass

Any Text WCAG AAA ✓ Pass

Black Background



Color Contrast Check

Large Text (above 18pt) WCAG AA × Fail

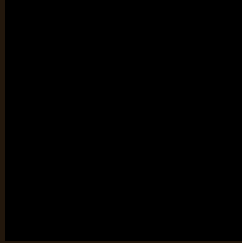
Any Text WCAG AA × Fail

Large Text (above 18pt) WCAG AAA × Fail

Any Text WCAG AAA × Fail

If you want to check with other color combinations, try the [Color Contrast Checker](#).

Hex 22170C Background



This preview shows how black text looks on a background with the Hex color 22170C.



This preview shows how white text looks on a background with the Hex color 22170C.

Color Blindness Simulation

Color vision deficiency is a very complex topic, and I could not describe the different causes any better than Wikipedia does, so if you want to learn more, you should check out their [article about color blindness](#).

Dichromacy



Original Color
22170C

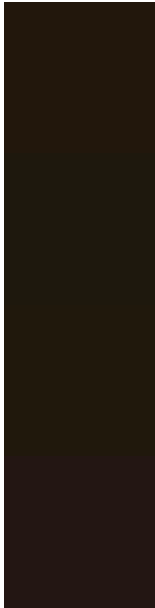
Protanopia
1C190D

Deuteranopia
1F180C



Tritanopia
231617

Trichromacy



Original Color
22170C

Protanomaly
1E180D

Deuteranomaly
20180C

Tritanomaly
231613

Monochromacy



Original Color
22170C

Achromatopsia
191919

Achromatomaly
1C1814

CSS Examples

Text

The CSS property to change the color of the text to Hex 22170C is called "color". The color property can be set on classes, ids or directly on the HTML element.

This example shows how text in the color #22170C looks like.

```
.text, #text, p{  
    color:#22170C  
}
```

If you want to add a text shadow in that color use the text-shadow property, you can generate a text shadow directly with our [CSS Text Shadow Generator](#).

Here you see how black text with a 4 pixel #22170C colored shadow looks like.

```
.shadow{ text-shadow: 4px 4px 2px #22170C  
}
```

Border

The CSS property to change the border of an element to Hex 22170C is called "border". The border property can be set on classes, ids or directly on the HTML element.

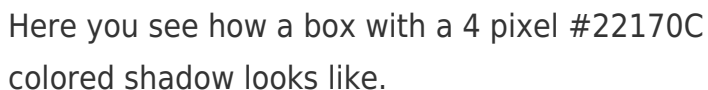
This example shows the color as border, it can be applied via the CSS property "border" or "border-color".

```
.border, #border, table{ border:4px solid  
#22170C }
```

If only the border color should be changed use the property `border-color`.

```
.border{ border-color:#22170C }
```

If you want to add a box shadow in that color use:



Here you see how a box with a 4 pixel #22170C colored shadow looks like.

```
.boxshadow{ -moz-box-shadow:4px 4px 4px  
4px #22170C; -webkit-box-shadow:4px 4px  
4px 4px #22170C; box-shadow:4px 4px 4px  
4px #22170C }
```

Background

The CSS property to change the background color of an element to Hex 22170C is called "background". The background property can be set on classes, ids or directly on the HTML element.

```
.background, #background, body{  
background:#22170C }
```

If only the background color should be changed can be used:

```
.background{ background-color:#22170C }
```

This example shows the color as background, it is applied via the CSS property "background".

To optimize and compress your CSS code, you can use our [online CSS compressor and optimizer](#) based on csstidy. If you want to create a linear or radial gradient as background or border, check our [CSS Gradient Generator](#).

Hey! You found this booklet interesting? Support Converting Colors with the new Membership Option!

The pro membership hides all ads, plus gives you double the colors in the color bucket, and more awesome pro features!

[Learn more, Memberships starting at \\$2.50/m!](#)

**Follow me
on Twitter!**

@ConvertingColor