

Converting Colors

Hex(270B10)

Have a look what the booklet for
Hex(270B10) contains.

Hex(270B10)	3
<i>Conversions</i>	4
<i>Details</i>	6
<i>Harmonies</i>	11
<i>Previews</i>	23
<i>Color Blindness Simulation</i>	26
<i>CSS Examples</i>	29

Color

Hex(270B10)

Conversions

Conversions Part 1

Format	Color
Hex	270B10
RGB	39, 11, 16
RGB Percent	15%, 4%, 6%
CMY	0.8471, 0.9569, 0.9373
CMYK	0.00, 0.72, 0.59, 0.85
HSL	349°, 56%, 10%
HSV	349°, 72%, 15%
XYZ	1.0499, 0.7081, 0.5716
YIQ	19.9420, 15.0830, 7.4910

Conversions

Conversions Part 2

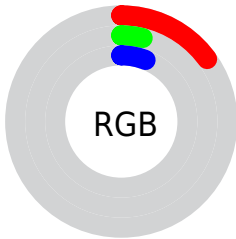
Format	Color
RYB	39, 11, 16
Decimal	2558736
CIELab	6.40, 14.82, 2.85
CIELCh	6, 15.091, 10.896
Yxy	0.7081, 0.4507, 0.3040
Android (android.graphics.Color)	4280748816 (0xFF270B10)
YUV	19.9420, -1.9434, 16.7139
Hunter-Lab	8.4148, 7.5452, 1.8633

Details

The Hex color **270B10** is a dark color, and the websafe version is hex **330000**. A complement of this color would be **0B2722**, and the grayscale version is **141414**.

A 20% lighter version of the original color is **55363B**, and **000000** is the 20% darker color. If you saturate the color by 10%, you get **27070D**, and if you desaturate by 10%, it is **270F13**.

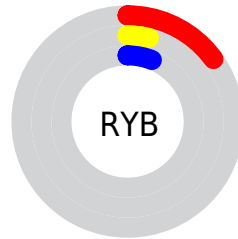
Distribution



Red (15%)

Green (4%)

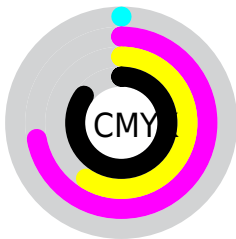
Blue (6%)



Red (15%)

Yellow (4%)

Blue (6%)

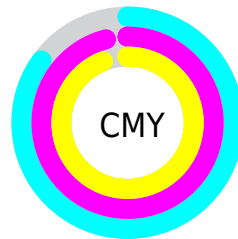


Cyan (0%)

Magenta (72%)

Yellow (59%)

Black (85%)



Cyan (85%)

Magenta (96%)

Yellow (94%)

Brightness & Saturation Gradients

These gradients show how the Hex color 270B10 changes by changing the brightness by 10 percent. The first figure shows a shift by +10% for each color and the second figure -10%.

Similar to the brightness gradients but the following saturation gradients show a change of the Hex color 270B10 by changing the saturation by 10% instead.

 270B10

 270B10

 FFEBF0

 000000

 55363B

 6E4D52

 88656A

 A27E83

 BE989D

 DAB3B8

 F7CED3

 270B10

 270B10

■ 27070D

■ 270F13

■ 27030A

■ 271316

■ 270007

■ 27171A

■ 271B1D

■ 271F20

■ 272223

■ 272626

■ 272A2A

■ 272E2D

Harmonies

Analogous

The Analogous color harmony consists of three colors that are next to each other on the color wheel.



230C1B



270B10



260D00

Triad

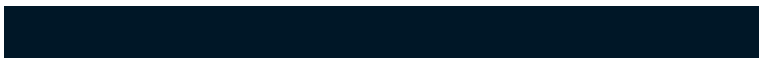
The Triadic color harmony groups three colors that are evenly spaced from another and form a triangle on the color wheel.



270B10



0A1800



001727

Complementary

The Complementary color scheme is a pair of colors which are on the opposite of each other on the color wheel.



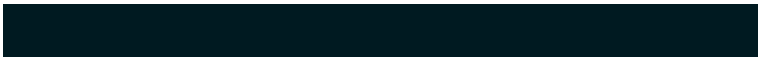
270B10



0B2722

Split Complementary

Split-complementary colors differ from the complementary color scheme. The scheme consists of three colors, the original color and two neighbors of the complement color.



001A21



270B10



001A0B

Square

The Square scheme is like the rectangle color scheme, but the four colors are evenly spaced on the color wheel.



270B10



171500



001B18



091428

Rectangle

The Rectangle color scheme consists of four colors that form a rectangle on the color wheel.



270B10



231000



001B18



001825

Sweetspot

The Sweet Spot groups the original color and five complimentary colors.



270B10



33282A



220B27



1A1314



999999



1A1A1A

Same Dimension

The Same Dimension uses a secret algorithm to generate beautiful new colors.



270B10



33070F



27140B



141213



54000F



D40026

Inverse Universe

The Inverse Universe completely reimagines the original color for something new.



270B10



33070F



0B1E27



141213



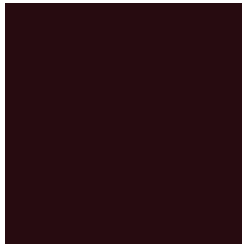
54000F



D40026

Previews

White Background



This preview shows how the Hex color 270B10 looks on a white background.

Color Contrast Check

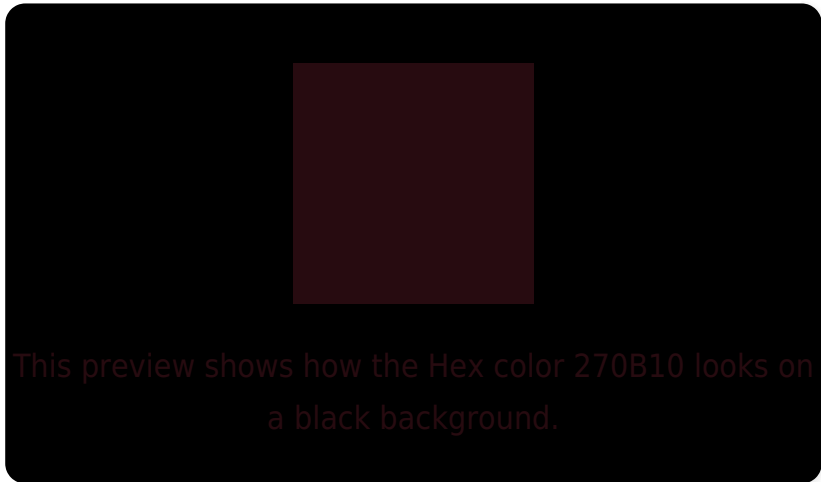
Large Text (above 18pt) WCAG AA ✓ Pass

Any Text WCAG AA ✓ Pass

Large Text (above 18pt) WCAG AAA ✓ Pass

Any Text WCAG AAA ✓ Pass

Black Background



Color Contrast Check

Large Text (above 18pt) WCAG AA × Fail

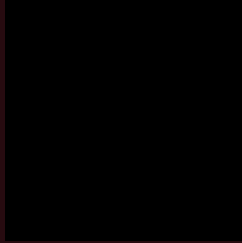
Any Text WCAG AA × Fail

Large Text (above 18pt) WCAG AAA × Fail

Any Text WCAG AAA × Fail

If you want to check with other color combinations, try the [Color Contrast Checker](#).

Hex 270B10 Background



This preview shows how black text looks on a background with the Hex color 270B10.

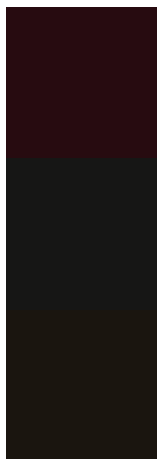


This preview shows how white text looks on a background with the Hex color 270B10.

Color Blindness Simulation

Color vision deficiency is a very complex topic, and I could not describe the different causes any better than Wikipedia does, so if you want to learn more, you should check out their [article about color blindness](#).

Dichromacy



Original Color
270B10

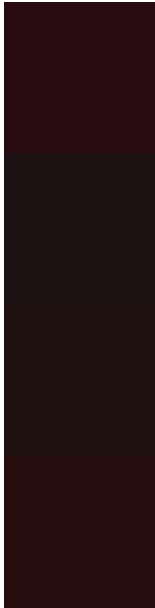
Protanopia
161615

Deuteranopia
1A150F



Tritanopia
270C0C

Trichromacy



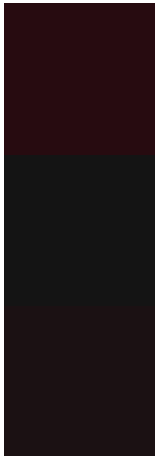
Original Color
270B10

Protanomaly
1C1213

Deuteranomaly
1F110F

Tritanomaly
270C0D

Monochromacy



Original Color
270B10

Achromatopsia
141414

Achromatomaly
1B1113

CSS Examples

Text

The CSS property to change the color of the text to Hex 270B10 is called "color". The color property can be set on classes, ids or directly on the HTML element.

This example shows how text in the color #270B10 looks like.

```
.text, #text, p{  
    color:#270B10  
}
```

If you want to add a text shadow in that color use the text-shadow property, you can generate a text shadow directly with our [CSS Text Shadow Generator](#).

Here you see how black text with a 4 pixel #270B10 colored shadow looks like.

```
.shadow{ text-shadow: 4px 4px 2px #270B10
}
```

Border

The CSS property to change the border of an element to Hex 270B10 is called "border". The border property can be set on classes, ids or directly on the HTML element.

This example shows the color as border, it can be applied via the CSS property "border" or "border-color".

```
.border, #border, table{ border:4px solid
#270B10 }
```

If only the border color should be changed use the property `border-color`.

```
.border{ border-color:#270B10 }
```

If you want to add a box shadow in that color use:

Here you see how a box with a 4 pixel #270B10 colored shadow looks like.

```
.boxshadow{ -moz-box-shadow:4px 4px 4px  
4px #270B10; -webkit-box-shadow:4px 4px  
4px 4px #270B10; box-shadow:4px 4px 4px  
4px #270B10 }
```

Background

The CSS property to change the background color of an element to Hex 270B10 is called "background". The background property can be set on classes, ids or directly on the HTML element.

```
.background, #background, body{  
background:#270B10 }
```

If only the background color should be changed can be used:

```
.background{ background-color:#270B10 }
```

This example shows the color as background, it is applied via the CSS property "background".

To optimize and compress your CSS code, you can use our [online CSS compressor and optimizer](#) based on csstidy. If you want to create a linear or radial gradient as background or border, check our [CSS Gradient Generator](#).

Hey! You found this booklet interesting? Support Converting Colors with the new Membership Option!

The pro membership hides all ads, plus gives you double the colors in the color bucket, and more awesome pro features!

[Learn more, Memberships starting at \\$2.50/m!](#)

**Follow me
on Twitter!**

@ConvertingColor