

Converting Colors

Hex(270C13)

Have a look what the booklet for
Hex(270C13) contains.

Hex(270C13)	3
<i>Conversions</i>	4
<i>Details</i>	6
<i>Harmonies</i>	11
<i>Previews</i>	23
<i>Color Blindness Simulation</i>	26
<i>CSS Examples</i>	29

Color

Hex(270C13)

Conversions

Conversions Part 1

Format	Color
Hex	270C13
RGB	39, 12, 19
RGB Percent	15%, 5%, 7%
CMY	0.8471, 0.9529, 0.9255
CMYK	0.00, 0.69, 0.51, 0.85
HSL	344°, 53%, 10%
HSV	344°, 69%, 15%
XYZ	1.0857, 0.7413, 0.7020
YIQ	20.8710, 13.8450, 7.9010

Conversions

Conversions Part 2

Format	Color
R_{YB}	39, 12, 19
Decimal	2558995
CIE Lab	6.70, 14.78, 1.50
CIE LCh	7, 14.855, 5.813
Yxy	0.7413, 0.4293, 0.2931
Android (android.graphics.Color)	4280749075 (0xFF270C13)
YUV	20.8710, -0.9224, 15.8991
Hunter-Lab	8.6099, 7.4419, 1.1930

Details

The Hex color **270C13** is a dark color, and the websafe version is hex **330000**. A complement of this color would be **0C2720**, and the grayscale version is **151515**.

A 20% lighter version of the original color is **55373D**, and **000000** is the 20% darker color. If you saturate the color by 10%, you get **270810**, and if you desaturate by 10%, it is **271016**.

Distribution



Red (15%)

Green (5%)

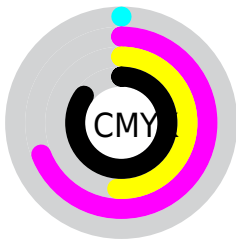
Blue (7%)



Red (15%)

Yellow (5%)

Blue (7%)



Cyan (0%)

Magenta (69%)

Yellow (51%)

Black (85%)



Cyan (85%)

Magenta (95%)

Yellow (93%)

Brightness & Saturation Gradients

These gradients show how the Hex color 270C13 changes by changing the brightness by 10 percent. The first figure shows a shift by +10% for each color and the second figure -10%.

Similar to the brightness gradients but the following saturation gradients show a change of the Hex color 270C13 by changing the saturation by 10% instead.

 270C13

 270C13

 FFECF3

 010000

 55373D

 000000

 6E4E54

 88666D

 A27F86

 BE99A0

 DAB4BB

 F6CFD7

 270C13

 270C13

■ 270810

■ 271016

■ 27040D

■ 271419

■ 27000A

■ 27181C

■ 271C1F

■ 272021

■ 272324

■ 272727

■ 272B2A

■ 272F2D

Harmonies

Analogous

The Analogous color harmony consists of three colors that are next to each other on the color wheel.



220E1D



270C13



270E04

Triad

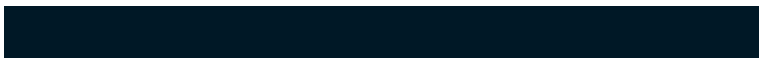
The Triadic color harmony groups three colors that are evenly spaced from another and form a triangle on the color wheel.



270C13



0E1800



001826

Complementary

The Complementary color scheme is a pair of colors which are on the opposite of each other on the color wheel.



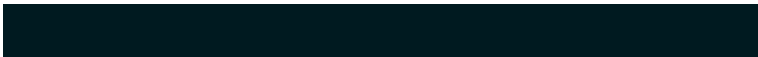
270C13



0C2720

Split Complementary

Split-complementary colors differ from the complementary color scheme. The scheme consists of three colors, the original color and two neighbors of the complement color.



001A20



270C13



001A09

Square

The Square scheme is like the rectangle color scheme, but the four colors are evenly spaced on the color wheel.



270C13



1A1500



001B17



071528

Rectangle

The Rectangle color scheme consists of four colors that form a rectangle on the color wheel.



270C13



251000



001B17



001925

Sweetspot

The Sweet Spot groups the original color and five complimentary colors.



270C13



33282B



200C27



1A1315



999999



1A1A1A

Same Dimension

The Same Dimension uses a secret algorithm to generate beautiful new colors.



270C13



330914



27120C



141213



540016



D40037

Inverse Universe

The Inverse Universe completely reimagines the original color for something new.



270C13



330914



0C2127



141213



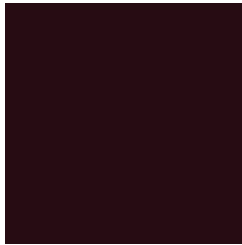
540016



D40037

Previews

White Background



This preview shows how the Hex color 270C13 looks on a white background.

Color Contrast Check

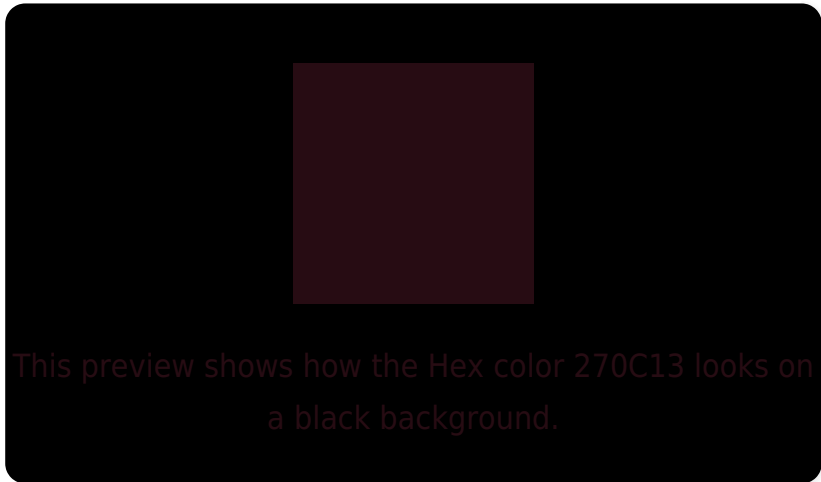
Large Text (above 18pt) WCAG AA ✓ Pass

Any Text WCAG AA ✓ Pass

Large Text (above 18pt) WCAG AAA ✓ Pass

Any Text WCAG AAA ✓ Pass

Black Background



Color Contrast Check

Large Text (above 18pt) WCAG AA × Fail

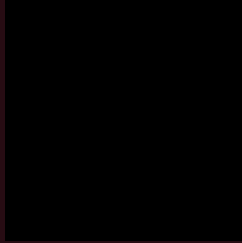
Any Text WCAG AA × Fail

Large Text (above 18pt) WCAG AAA × Fail

Any Text WCAG AAA × Fail

If you want to check with other color combinations, try the [Color Contrast Checker](#).

Hex 270C13 Background



This preview shows how black text looks on a background with the Hex color 270C13.



This preview shows how white text looks on a background with the Hex color 270C13.

Color Blindness Simulation

Color vision deficiency is a very complex topic, and I could not describe the different causes any better than Wikipedia does, so if you want to learn more, you should check out their [article about color blindness](#).

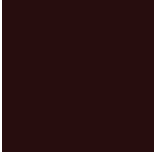
Dichromacy



Original Color
270C13

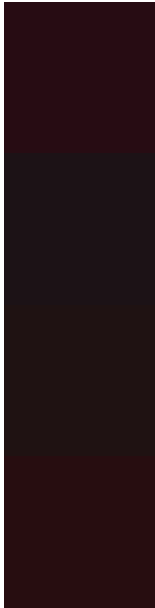
Protanopia
161618

Deuteranopia
1A1512



Tritanopia
270D0E

Trichromacy



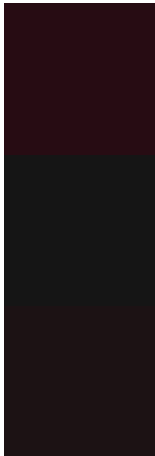
Original Color
270C13

Protanomaly
1C1216

Deuteranomaly
1F1212

Tritanomaly
270D10

Monochromacy



Original Color
270C13

Achromatopsia
151515

Achromatomaly
1C1214

CSS Examples

Text

The CSS property to change the color of the text to Hex 270C13 is called "color". The color property can be set on classes, ids or directly on the HTML element.

This example shows how text in the color #270C13 looks like.

```
.text, #text, p{  
    color:#270C13  
}
```

If you want to add a text shadow in that color use the text-shadow property, you can generate a text shadow directly with our [CSS Text Shadow Generator](#).

Here you see how black text with a 4 pixel #270C13 colored shadow looks like.

```
.shadow{ text-shadow: 4px 4px 2px #270C13
}
```

Border

The CSS property to change the border of an element to Hex 270C13 is called "border". The border property can be set on classes, ids or directly on the HTML element.

This example shows the color as border, it can be applied via the CSS property "border" or "border-color".

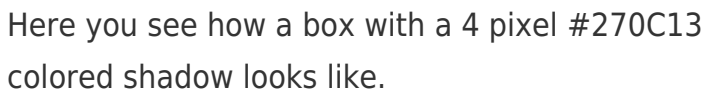
```
.border, #border, table{ border:4px solid
#270C13 }
```

If only the border color should be changed use the property `border-color`.

```
.border{ border-color:#270C13 }
```

If you want to add a box shadow in that color use:

Here you see how a box with a 4 pixel #270C13 colored shadow looks like.

A rectangular box with a dark blue border and a dark blue shadow. The box is white with a thin dark blue border on the top and left sides, and a thicker dark blue shadow on the bottom and right sides.

```
.boxshadow{ -moz-box-shadow:4px 4px 4px  
4px #270C13; -webkit-box-shadow:4px 4px  
4px 4px #270C13; box-shadow:4px 4px 4px  
4px #270C13 }
```

Background

The CSS property to change the background color of an element to Hex 270C13 is called "background". The background property can be set on classes, ids or directly on the HTML element.

```
.background, #background, body{  
background:#270C13 }
```

If only the background color should be changed can be used:

```
.background{ background-color:#270C13 }
```

This example shows the color as background, it is applied via the CSS property "background".

To optimize and compress your CSS code, you can use our [online CSS compressor and optimizer](#) based on csstidy. If you want to create a linear or radial gradient as background or border, check our [CSS Gradient Generator](#).

Hey! You found this booklet interesting? Support Converting Colors with the new Membership Option!

The pro membership hides all ads, plus gives you double the colors in the color bucket, and more awesome pro features!

[Learn more, Memberships starting at \\$2.50/m!](#)

**Follow me
on Twitter!**

@ConvertingColor