

Converting Colors

Hex(271103)

Have a look what the booklet for
Hex(271103) contains.

Hex(271103)	3
<i>Conversions</i>	4
<i>Details</i>	6
<i>Harmonies</i>	11
<i>Previews</i>	23
<i>Color Blindness Simulation</i>	26
<i>CSS Examples</i>	29

Color

Hex(271103)

Conversions

Conversions Part 1

Format	Color
Hex	271103
RGB	39, 17, 3
RGB Percent	15%, 7%, 1%
CMY	0.8471, 0.9333, 0.9882
CMYK	0.00, 0.56, 0.92, 0.85
HSL	23°, 86%, 8%
HSV	23°, 92%, 15%
XYZ	1.0536, 0.8388, 0.1925
YIQ	21.9820, 17.6060, 0.3100

Conversions

Conversions Part 2

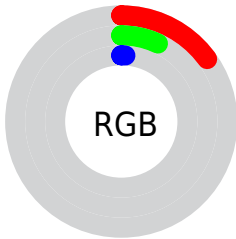
Format	Color
R_{YB}	39, 26, 3
Decimal	2560259
CIE Lab	7.58, 9.86, 10.31
CIE LCh	8, 14.266, 46.278
Yxy	0.8388, 0.5053, 0.4023
Android (android.graphics.Color)	4280750339 (0xFF271103)
YUV	21.9820, -9.3581, 14.9248
Hunter-Lab	9.1586, 4.5065, 5.1647

Details

The Hex color **271103** is a dark color, and the websafe version is hex **330000**. A complement of this color would be **031927**, and the grayscale version is **161616**.

A 20% lighter version of the original color is **553B32**, and **000000** is the 20% darker color. If you saturate the color by 10%, you get **270F00**, and if you desaturate by 10%, it is **271307**.

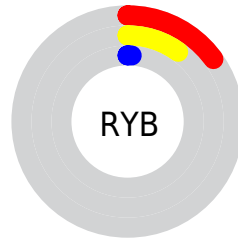
Distribution



Red (15%)

Green (7%)

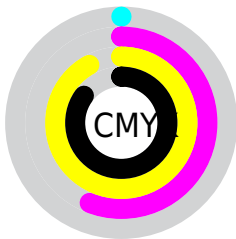
Blue (1%)



Red (15%)

Yellow (10%)

Blue (1%)

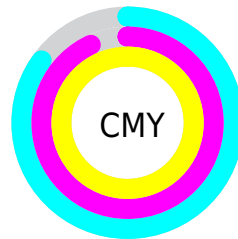


Cyan (0%)

Magenta (56%)

Yellow (92%)

Black (85%)



Cyan (85%)

Magenta (93%)

Yellow (99%)

Brightness & Saturation Gradients

These gradients show how the Hex color 271103 changes by changing the brightness by 10 percent. The first figure shows a shift by +10% for each color and the second figure -10%.

Similar to the brightness gradients but the following saturation gradients show a change of the Hex color 271103 by changing the saturation by 10% instead.

 271103

 271103

 FFF1E5

 000000

 553B32

 6E5248

 886B60

 A28479

 BD9E93

 DAB9AD

 F6D5C8

 271103

 271103

■ 270F00

■ 271307

■ 27160B

■ 27180F

■ 271B13

■ 271D17

■ 271F1A

■ 27221E

■ 272422

■ 272626

Harmonies

Analogous

The Analogous color harmony consists of three colors that are next to each other on the color wheel.



290F11



271103



221400

Triad

The Triadic color harmony groups three colors that are evenly spaced from another and form a triangle on the color wheel.



271103



001C11



101629

Complementary

The Complementary color scheme is a pair of colors which are on the opposite of each other on the color wheel.



271103



031927

Split Complementary

Split-complementary colors differ from the complementary color scheme. The scheme consists of three colors, the original color and two neighbors of the complement color.



001929



271103



001C1C

Square

The Square scheme is like the rectangle color scheme, but the four colors are evenly spaced on the color wheel.



271103



0C1A03



001B24



1E1224

Rectangle

The Rectangle color scheme consists of four colors that form a rectangle on the color wheel.



271103



1C1700



001B24



0A1729

Sweetspot

The Sweet Spot groups the original color and five complimentary colors.



271103



332A25



270319



1A1411



999999



1A1A1A

Same Dimension

The Same Dimension uses a secret algorithm to generate beautiful new colors.



271103



331400



272303



141312



542100



D45200

Inverse Universe

The Inverse Universe completely reimagines the original color for something new.



031927



001F33



030727



121414



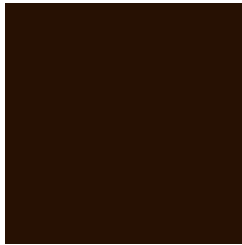
003354



0081D4

Previews

White Background



This preview shows how the Hex color 271103 looks on a white background.

Color Contrast Check

Large Text (above 18pt) WCAG AA ✓ Pass

Any Text WCAG AA ✓ Pass

Large Text (above 18pt) WCAG AAA ✓ Pass

Any Text WCAG AAA ✓ Pass

Black Background



Color Contrast Check

Large Text (above 18pt) WCAG AA × Fail

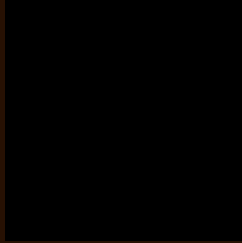
Any Text WCAG AA × Fail

Large Text (above 18pt) WCAG AAA × Fail

Any Text WCAG AAA × Fail

If you want to check with other color combinations, try the [Color Contrast Checker](#).

Hex 271103 Background



This preview shows how black text looks on a background with the Hex color 271103.



This preview shows how white text looks on a background with the Hex color 271103.

Color Blindness Simulation

Color vision deficiency is a very complex topic, and I could not describe the different causes any better than Wikipedia does, so if you want to learn more, you should check out their [article about color blindness](#).

Dichromacy



Original Color
271103

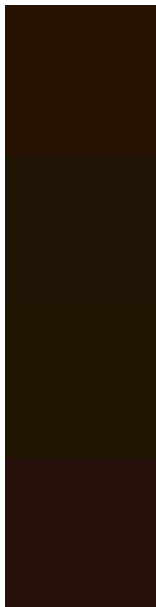
Protanopia
1B1805

Deuteranopia
1E1700



Tritanopia
271011

Trichromacy



Original Color

271103

Protanomaly

1F1504

Deuteranomaly

211501

Tritanomaly

27100C

Monochromacy



Original Color

271103

Achromatopsia

161616

Achromatomaly

1C140F

CSS Examples

Text

The CSS property to change the color of the text to Hex 271103 is called "color". The color property can be set on classes, ids or directly on the HTML element.

This example shows how text in the color #271103 looks like.

```
.text, #text, p{  
    color:#271103  
}
```

If you want to add a text shadow in that color use the text-shadow property, you can generate a text shadow directly with our [CSS Text Shadow Generator](#).

Here you see how black text with a 4 pixel #271103 colored shadow looks like.

```
.shadow{ text-shadow: 4px 4px 2px #271103
}
```

Border

The CSS property to change the border of an element to Hex 271103 is called "border". The border property can be set on classes, ids or directly on the HTML element.

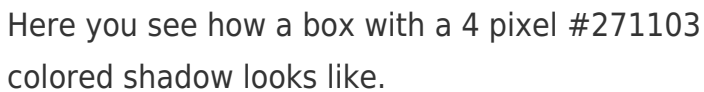
This example shows the color as border, it can be applied via the CSS property "border" or "border-color".

```
.border, #border, table{ border:4px solid
#271103 }
```

If only the border color should be changed use the property `border-color`.

```
.border{ border-color:#271103 }
```

If you want to add a box shadow in that color use:



Here you see how a box with a 4 pixel #271103 colored shadow looks like.

```
.boxshadow{ -moz-box-shadow:4px 4px 4px  
4px #271103; -webkit-box-shadow:4px 4px  
4px 4px #271103; box-shadow:4px 4px 4px  
4px #271103 }
```

Background

The CSS property to change the background color of an element to Hex 271103 is called "background". The background property can be set on classes, ids or directly on the HTML element.

```
.background, #background, body{  
background:#271103 }
```

If only the background color should be changed can be used:

```
.background{ background-color:#271103 }
```

This example shows the color as background, it is applied via the CSS property "background".

To optimize and compress your CSS code, you can use our [online CSS compressor and optimizer](#) based on csstidy. If you want to create a linear or radial gradient as background or border, check our [CSS Gradient Generator](#).

Hey! You found this booklet interesting? Support Converting Colors with the new Membership Option!

The pro membership hides all ads, plus gives you double the colors in the color bucket, and more awesome pro features!

[Learn more, Memberships starting at \\$2.50/m!](#)

**Follow me
on Twitter!**

@ConvertingColor