

# Converting Colors

Hex(271A0D)

Have a look what the booklet for  
Hex(271A0D) contains.

<b>Hex(271A0D)</b> .....	3
<i><b>Conversions</b></i> .....	4
<i><b>Details</b></i> .....	6
<i><b>Harmonies</b></i> .....	11
<i><b>Previews</b></i> .....	23
<i><b>Color Blindness Simulation</b></i> .....	26
<i><b>CSS Examples</b></i> .....	29

# Color

**Hex(271A0D)**

# Conversions

## Conversions Part 1

Format	Color
Hex	271A0D
RGB	39, 26, 13
RGB Percent	15%, 10%, 5%
CMY	0.8471, 0.8980, 0.9490
CMYK	0.00, 0.33, 0.67, 0.85
HSL	30°, 50%, 10%
HSV	30°, 67%, 15%
XYZ	1.2787, 1.1992, 0.5448
YIQ	28.4050, 11.9210, -1.2870

# Conversions

## Conversions Part 2

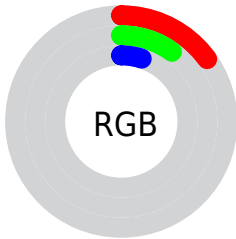
<b>Format</b>	<b>Color</b>
<b>RYB</b>	39, 39, 13
Decimal	2562573
CIELab	10.55, 4.47, 10.40
CIELCh	11, 11.320, 66.723
Yxy	1.1992, 0.4230, 0.3967
Android (android.graphics.Color)	4280752653 (0xFF271A0D)
YUV	28.4050, -7.5947, 9.2918
Hunter-Lab	10.9507, 1.6801, 4.7156

# Details

The Hex color **271A0D** is a dark color, and the websafe version is hex **000000**. A complement of this color would be **0D1A27**, and the grayscale version is **1C1C1C**.

A 20% lighter version of the original color is **554538**, and **000000** is the 20% darker color. If you saturate the color by 10%, you get **271809**, and if you desaturate by 10%, it is **271C11**.

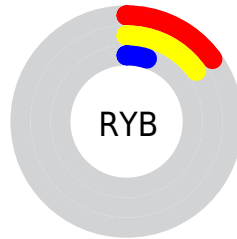
# Distribution



Red (15%)

Green (10%)

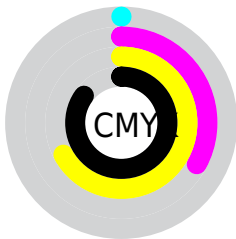
Blue (5%)



Red (15%)

Yellow (15%)

Blue (5%)

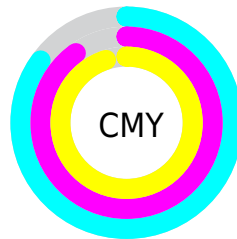


Cyan (0%)

Magenta (33%)

Yellow (67%)

Black (85%)



Cyan (85%)

Magenta (90%)

Yellow (95%)

# Brightness & Saturation Gradients

These gradients show how the Hex color 271A0D changes by changing the brightness by 10 percent. The first figure shows a shift by +10% for each color and the second figure -10%.

Similar to the brightness gradients but the following saturation gradients show a change of the Hex color 271A0D by changing the saturation by 10% instead.



 271A0D

 271A0D

 FFFDED

 0E0000

 554538

 000000

 6D5D4F

 877567

 A18F80

 BDA99A

 D8C4B5

 F5E0D0

 271A0D

 271A0D

■ 271809

■ 271C11

■ 271605

■ 271E15

■ 271401

■ 272019

■ 271400

■ 27221D

■ 272421

■ 272624

■ 272828

■ 272A2C

■ 272C30

# Harmonies

## Analogous

The Analogous color harmony consists of three colors that are next to each other on the color wheel.



2B1814



271A0D



201D0B

# Triad

The Triadic color harmony groups three colors that are evenly spaced from another and form a triangle on the color wheel.



271A0D



05211E



201A29

# Complementary

The Complementary color scheme is a pair of colors which are on the opposite of each other on the color wheel.



271A0D



0D1A27

# Split Complementary

Split-complementary colors differ from the complementary color scheme. The scheme consists of three colors, the original color and two neighbors of the complement color.



141D2C



271A0D



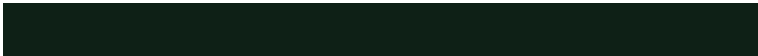
022025

# Square

The Square scheme is like the rectangle color scheme, but the four colors are evenly spaced on the color wheel.



271A0D



0E2016



081F2A



281823

# Rectangle

The Rectangle color scheme consists of four colors that form a rectangle on the color wheel.



271A0D



1B1E0D



081F2A



1C1B2A



# Sweetspot

The Sweet Spot groups the original color and five complimentary colors.



271A0D



332E29



270D1A



1A1613



999999



1A1A1A



# Same Dimension

The Same Dimension uses a secret algorithm to generate beautiful new colors.



271A0D



331F0A



27270D



141312



542A00



D46A00



# Inverse Universe

The Inverse Universe completely reimagines the original color for something new.



0D1A27



0A1F33



0D0D27



121314



002A54

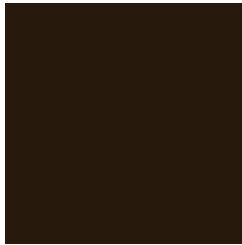


006AD4



# Previews

## White Background



This preview shows how the Hex color 271A0D looks on a white background.

## Color Contrast Check

Large Text (above 18pt) WCAG AA ✓ Pass

Any Text WCAG AA ✓ Pass

Large Text (above 18pt) WCAG AAA ✓ Pass

Any Text WCAG AAA ✓ Pass

# Black Background



## Color Contrast Check

Large Text (above 18pt) WCAG AA × Fail

Any Text WCAG AA × Fail

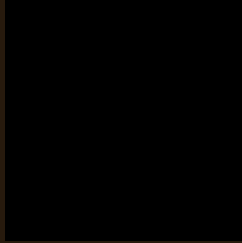
Large Text (above 18pt) WCAG AAA × Fail

Any Text WCAG AAA × Fail

If you want to check with other color combinations, try the [Color Contrast Checker](#).



## Hex 271A0D Background



This preview shows how black text looks on a background with the Hex color 271A0D.

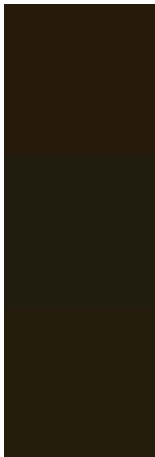


This preview shows how white text looks on a background with the Hex color 271A0D.

# Color Blindness Simulation

Color vision deficiency is a very complex topic, and I could not describe the different causes any better than Wikipedia does, so if you want to learn more, you should check out their [article about color blindness](#).

## Dichromacy



**Original Color**  
271A0D

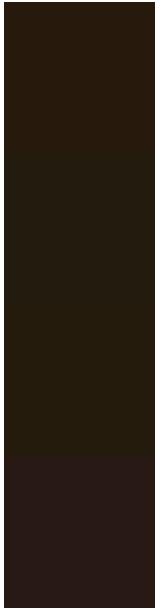
**Protanopia**  
201D0E

**Deuteranopia**  
241C0D



**Tritanopia**  
28191A

# Trichromacy



**Original Color**  
271A0D

**Protanomaly**  
231C0E

**Deuteranomaly**  
251B0D

**Tritanomaly**  
281915

# Monochromacy



**Original Color**  
271A0D

**Achromatopsia**  
1C1C1C

**Achromatomaly**  
201B17

# CSS Examples

## Text

The CSS property to change the color of the text to Hex 271A0D is called "color". The color property can be set on classes, ids or directly on the HTML element.

This example shows how text in the color #271A0D looks like.

```
.text, #text, p{  
    color:#271A0D  
}
```

If you want to add a text shadow in that color use the text-shadow property, you can generate a text shadow directly with our [CSS Text Shadow Generator](#).

Here you see how black text with a 4 pixel #271A0D colored shadow looks like.

```
.shadow{ text-shadow: 4px 4px 2px #271A0D  
}
```

## Border

The CSS property to change the border of an element to Hex 271A0D is called "border". The border property can be set on classes, ids or directly on the HTML element.

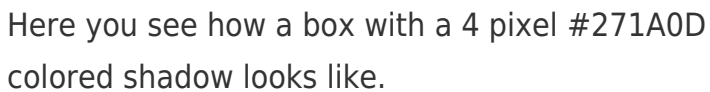
This example shows the color as border, it can be applied via the CSS property "border" or "border-color".

```
.border, #border, table{ border:4px solid  
#271A0D }
```

If only the border color should be changed use the property `border-color`.

```
.border{ border-color:#271A0D }
```

If you want to add a box shadow in that color use:



Here you see how a box with a 4 pixel #271A0D colored shadow looks like.

```
.boxshadow{ -moz-box-shadow:4px 4px 4px  
4px #271A0D; -webkit-box-shadow:4px 4px  
4px 4px #271A0D; box-shadow:4px 4px 4px  
4px #271A0D }
```

# Background

The CSS property to change the background color of an element to Hex 271A0D is called "background". The background property can be set on classes, ids or directly on the HTML element.

```
.background, #background, body{  
background:#271A0D }
```

If only the background color should be changed can be used:

```
.background{ background-color:#271A0D }
```

This example shows the color as background, it is applied via the CSS property "background".

To optimize and compress your CSS code, you can use our [online CSS compressor and optimizer](#) based on csstidy. If you want to create a linear or radial gradient as background or border, check our [CSS Gradient Generator](#).



# Hey! You found this booklet interesting? Support Converting Colors with the new Membership Option!

The pro membership hides all ads, plus gives you double the colors in the color bucket, and more awesome pro features!

**[Learn more, Memberships starting at \\$2.50/m!](#)**

**Follow me  
on Twitter!**

@ConvertingColor