

Converting Colors

Hex(28110B)

Have a look what the booklet for
Hex(28110B) contains.

Hex(28110B)	3
<i>Conversions</i>	4
<i>Details</i>	6
<i>Harmonies</i>	11
<i>Previews</i>	23
<i>Color Blindness Simulation</i>	26
<i>CSS Examples</i>	29

Color

Hex(28110B)

Conversions

Conversions Part 1

Format	Color
Hex	28110B
RGB	40, 17, 11
RGB Percent	16%, 7%, 4%
CMY	0.8431, 0.9333, 0.9569
CMYK	0.00, 0.58, 0.73, 0.84
HSL	12°, 57%, 10%
HSV	12°, 72%, 16%
XYZ	1.1359, 0.8762, 0.4259
YIQ	23.1930, 15.6340, 3.0100

Conversions

Conversions Part 2

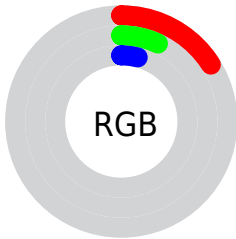
Format	Color
R_YB	40, 19, 11
Decimal	2625803
CIE _{Lab}	7.91, 11.24, 7.55
CIE _{LCh}	8, 13.540, 33.913
Yxy	0.8762, 0.4659, 0.3594
Android (android.graphics.Color)	4280815883 (0xFF28110B)
YUV	23.1930, -6.0111, 14.7397
Hunter-Lab	9.3604, 5.2810, 3.8549

Details

The Hex color **28110B** is a dark color, and the websafe version is hex **330000**. A complement of this color would be **0B2228**, and the grayscale version is **171717**.

A 20% lighter version of the original color is **563B37**, and **000000** is the 20% darker color. If you saturate the color by 10%, you get **280E07**, and if you desaturate by 10%, it is **28140F**.

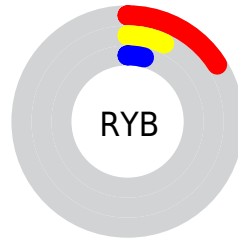
Distribution



Red (16%)

Green (7%)

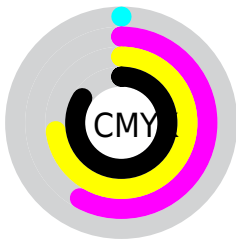
Blue (4%)



Red (16%)

Yellow (7%)

Blue (4%)

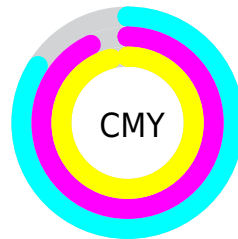


Cyan (0%)

Magenta (58%)

Yellow (73%)

Black (84%)



Cyan (84%)

Magenta (93%)

Yellow (96%)

Brightness & Saturation Gradients

These gradients show how the Hex color 28110B changes by changing the brightness by 10 percent. The first figure shows a shift by +10% for each color and the second figure -10%.

Similar to the brightness gradients but the following saturation gradients show a change of the Hex color 28110B by changing the saturation by 10% instead.

 28110B

 28110B

 FFF1EB

 060000

 563B37

 000000

 6F524E

 896B65

 A4847E

 BF9E98

 DBB9B3

 F8D5CF

 28110B

 28110B

■ 280E07

■ 28140F

■ 280B03

■ 281713

■ 280800

■ 281B17

■ 281E1B

■ 28211F

■ 282423

■ 282727

■ 282A2B

■ 282E2F

Harmonies

Analogous

The Analogous color harmony consists of three colors that are next to each other on the color wheel.



281016



28110B



241400

Triad

The Triadic color harmony groups three colors that are evenly spaced from another and form a triangle on the color wheel.



28110B



041C0D



0A1829

Complementary

The Complementary color scheme is a pair of colors which are on the opposite of each other on the color wheel.



28110B



0B2228

Split Complementary

Split-complementary colors differ from the complementary color scheme. The scheme consists of three colors, the original color and two neighbors of the complement color.



001A27



28110B



001D18

Square

The Square scheme is like the rectangle color scheme, but the four colors are evenly spaced on the color wheel.



28110B



131A01



001C21



1A1526

Rectangle

The Rectangle color scheme consists of four colors that form a rectangle on the color wheel.



28110B



201600



001C21



041929

Sweetspot

The Sweet Spot groups the original color and five complimentary colors.



28110B



332A28



280B22



1A1413



999999



1A1A1A

Same Dimension

The Same Dimension uses a secret algorithm to generate beautiful new colors.



28110B



331007



281F0B



141312



541100



D42C00

Inverse Universe

The Inverse Universe completely reimagines the original color for something new.



0B2228



072A33



0B1428



121414



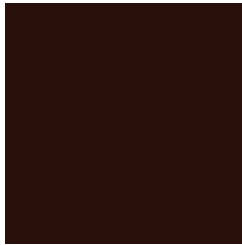
004354



00A8D4

Previews

White Background



This preview shows how the Hex color 28110B looks on a white background.

Color Contrast Check

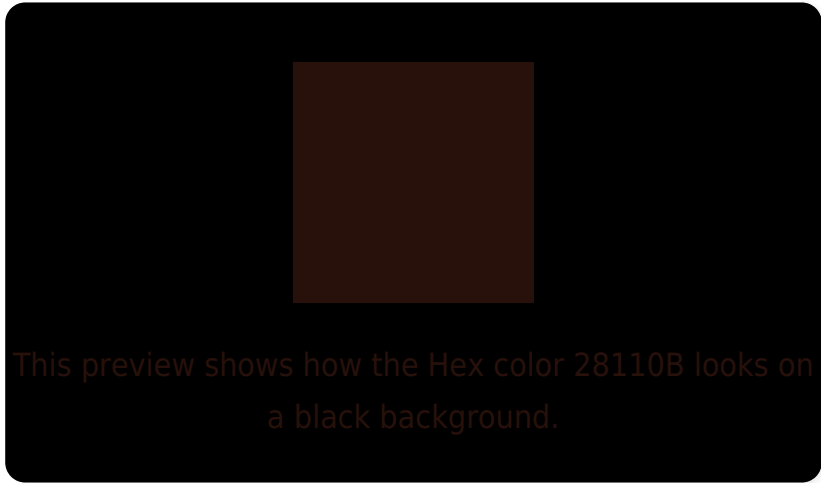
Large Text (above 18pt) WCAG AA ✓ Pass

Any Text WCAG AA ✓ Pass

Large Text (above 18pt) WCAG AAA ✓ Pass

Any Text WCAG AAA ✓ Pass

Black Background



Color Contrast Check

Large Text (above 18pt) WCAG AA × Fail

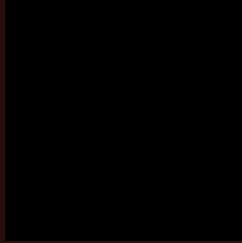
Any Text WCAG AA × Fail

Large Text (above 18pt) WCAG AAA × Fail

Any Text WCAG AAA × Fail

If you want to check with other color combinations, try the [Color Contrast Checker](#).

Hex 28110B Background



This preview shows how black text looks on a background with the Hex color 28110B.



This preview shows how white text looks on a background with the Hex color 28110B.

Color Blindness Simulation

Color vision deficiency is a very complex topic, and I could not describe the different causes any better than Wikipedia does, so if you want to learn more, you should check out their [article about color blindness](#).

Dichromacy



Original Color
28110B

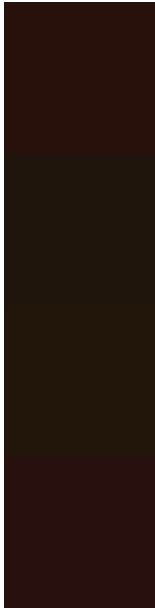
Protanopia
1B180D

Deuteranopia
1E170A



Tritanopia
281011

Trichromacy



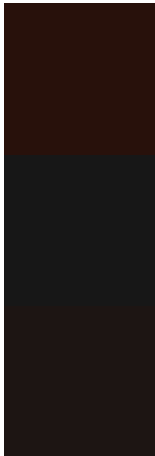
Original Color
28110B

Protanomaly
20150C

Deuteranomaly
22150A

Tritanomaly
28100F

Monochromacy



Original Color
28110B

Achromatopsia
171717

Achromatomaly
1D1513

CSS Examples

Text

The CSS property to change the color of the text to Hex 28110B is called "color". The color property can be set on classes, ids or directly on the HTML element.

This example shows how text in the color #28110B looks like.

```
.text, #text, p{  
    color:#28110B  
}
```

If you want to add a text shadow in that color use the text-shadow property, you can generate a text shadow directly with our [CSS Text Shadow Generator](#).

Here you see how black text with a 4 pixel #28110B colored shadow looks like.

```
.shadow{ text-shadow: 4px 4px 2px #28110B
}
```

Border

The CSS property to change the border of an element to Hex 28110B is called "border". The border property can be set on classes, ids or directly on the HTML element.

This example shows the color as border, it can be applied via the CSS property "border" or "border-color".

```
.border, #border, table{ border:4px solid
#28110B }
```

If only the border color should be changed use the property `border-color`.

```
.border{ border-color:#28110B }
```

If you want to add a box shadow in that color use:

Here you see how a box with a 4 pixel #28110B colored shadow looks like.

```
.boxshadow{ -moz-box-shadow:4px 4px 4px  
4px #28110B; -webkit-box-shadow:4px 4px  
4px 4px #28110B; box-shadow:4px 4px 4px  
4px #28110B }
```

Background

The CSS property to change the background color of an element to Hex 28110B is called "background". The background property can be set on classes, ids or directly on the HTML element.

```
.background, #background, body{  
background:#28110B }
```

If only the background color should be changed can be used:

```
.background{ background-color:#28110B }
```

This example shows the color as background, it is applied via the CSS property "background".

To optimize and compress your CSS code, you can use our [online CSS compressor and optimizer](#) based on csstidy. If you want to create a linear or radial gradient as background or border, check our [CSS Gradient Generator](#).

Hey! You found this booklet interesting? Support Converting Colors with the new Membership Option!

The pro membership hides all ads, plus gives you double the colors in the color bucket, and more awesome pro features!

[Learn more, Memberships starting at \\$2.50/m!](#)

**Follow me
on Twitter!**

@ConvertingColor