

# Converting Colors

Hex(290D14)

Have a look what the booklet for  
Hex(290D14) contains.

<b>Hex(290D14)</b> .....	3
<i><b>Conversions</b></i> .....	4
<i><b>Details</b></i> .....	6
<i><b>Harmonies</b></i> .....	11
<i><b>Previews</b></i> .....	23
<i><b>Color Blindness Simulation</b></i> .....	26
<i><b>CSS Examples</b></i> .....	29

**Color**

**Hex(290D14)**

# Conversions

## Conversions Part 1

Format	Color
Hex	290D14
RGB	41, 13, 20
RGB Percent	16%, 5%, 8%
CMY	0.8392, 0.9490, 0.9216
CMYK	0.00, 0.68, 0.51, 0.84
HSL	345°, 52%, 11%
HSV	345°, 68%, 16%
XYZ	1.1846, 0.8098, 0.7557
YIQ	22.1700, 14.4410, 8.1130

# Conversions

## Conversions Part 2

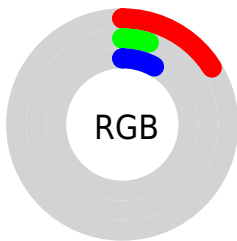
<b>Format</b>	<b>Color</b>
<a href="#">RYB</a>	<a href="#">41, 13, 20</a>
Decimal	<a href="#">2690324</a>
CIELab	<a href="#">7.31, 15.43, 1.80</a>
CIELCh	<a href="#">7, 15.538, 6.662</a>
Yxy	<a href="#">0.8098, 0.4308, 0.2945</a>
Android (android.graphics.Color)	<a href="#">4280880404 (0xFF290D14)</a>
YUV	<a href="#">22.1700, -1.0698, 16.5139</a>
Hunter-Lab	<a href="#">8.9987, 7.7509, 1.3201</a>

# Details

The Hex color **290D14** is a dark color, and the websafe version is hex **330000**. A complement of this color would be **0D2922**, and the grayscale version is **161616**.

A 20% lighter version of the original color is **58383E**, and **000000** is the 20% darker color. If you saturate the color by 10%, you get **290911**, and if you desaturate by 10%, it is **291117**.

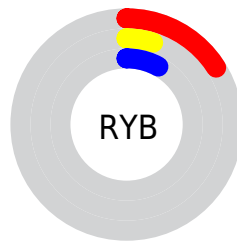
# Distribution



Red (16%)

Green (5%)

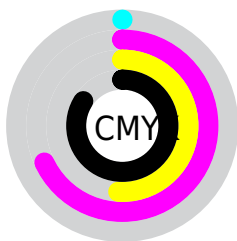
Blue (8%)



Red (16%)

Yellow (5%)

Blue (8%)

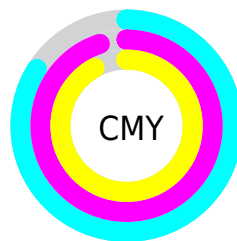


Cyan (0%)

Magenta (68%)

Yellow (51%)

Black (84%)



Cyan (84%)

Magenta (95%)

Yellow (92%)

# Brightness & Saturation Gradients

These gradients show how the Hex color 290D14 changes by changing the brightness by 10 percent. The first figure shows a shift by +10% for each color and the second figure -10%.

Similar to the brightness gradients but the following saturation gradients show a change of the Hex color 290D14 by changing the saturation by 10% instead.



 290D14

 290D14

 FFEDF4

 0A0000

 58383E

 000000

 714F55

 8B676E

 A58087

 C19AA1

 DDB5BC

 FAD1D8

 290D14

 290D14

■ 290911

■ 291117

■ 29050E

■ 29151A

■ 29010B

■ 29191D

■ 29000A

■ 291D20

■ 292123

■ 292626

■ 292A2A

■ 292E2D

■ 293230

# Harmonies

## Analogous

The Analogous color harmony consists of three colors that are next to each other on the color wheel.



240F1E



290D14



290F05

# Triad

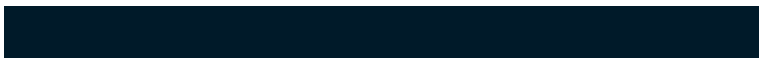
The Triadic color harmony groups three colors that are evenly spaced from another and form a triangle on the color wheel.



290D14



101900



001A29

# Complementary

The Complementary color scheme is a pair of colors which are on the opposite of each other on the color wheel.



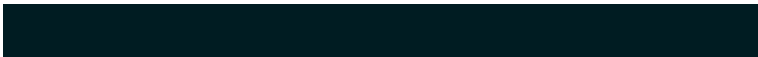
290D14



0D2922

# Split Complementary

Split-complementary colors differ from the complementary color scheme. The scheme consists of three colors, the original color and two neighbors of the complement color.



001C22



290D14



001C0B

# Square

The Square scheme is like the rectangle color scheme, but the four colors are evenly spaced on the color wheel.



290D14



1B1600



001C18



07162A

# Rectangle

The Rectangle color scheme consists of four colors that form a rectangle on the color wheel.



290D14



261100



001C18



001A27



# Sweetspot

The Sweet Spot groups the original color and five complimentary colors.



290D14



362B2E



220D29



1C1517



9C9C9C



1C1C1C



# Same Dimension

The Same Dimension uses a secret algorithm to generate beautiful new colors.



290D14



360A15



29140D



141213



540015



D40035



# Inverse Universe

The Inverse Universe completely reimagines the original color for something new.



290D14



360A15



0D2229



141213



540015

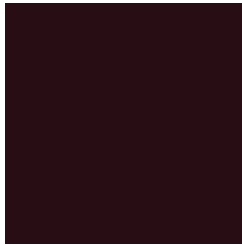


D40035



# Previews

## White Background



This preview shows how the Hex color 290D14 looks on a white background.

## Color Contrast Check

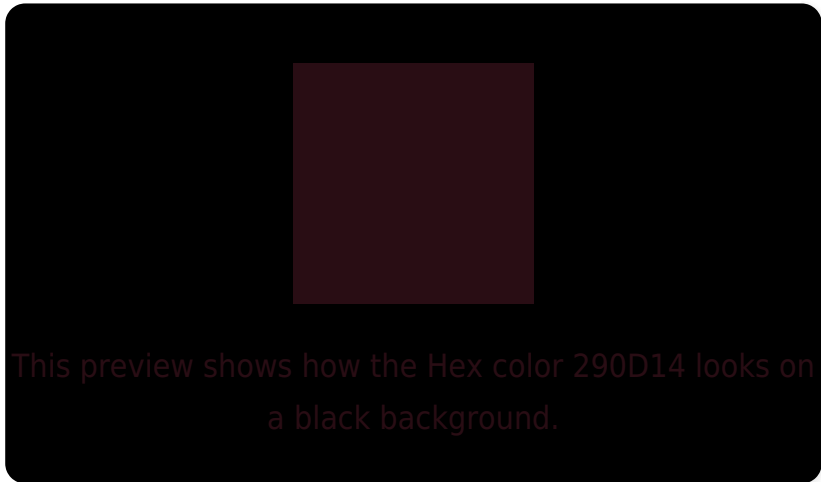
Large Text (above 18pt) WCAG AA ✓ Pass

Any Text WCAG AA ✓ Pass

Large Text (above 18pt) WCAG AAA ✓ Pass

Any Text WCAG AAA ✓ Pass

# Black Background



## Color Contrast Check

Large Text (above 18pt) WCAG AA × Fail

Any Text WCAG AA × Fail

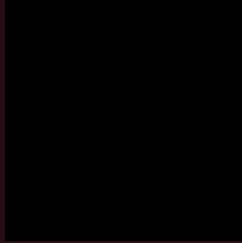
Large Text (above 18pt) WCAG AAA × Fail

Any Text WCAG AAA × Fail

If you want to check with other color combinations, try the [Color Contrast Checker](#).



## Hex 290D14 Background



This preview shows how black text looks on a background with the Hex color 290D14.

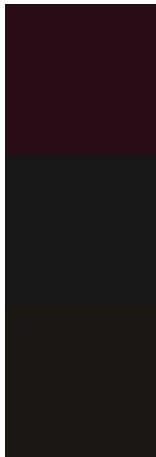


This preview shows how white text looks on a background with the Hex color 290D14.

# Color Blindness Simulation

Color vision deficiency is a very complex topic, and I could not describe the different causes any better than Wikipedia does, so if you want to learn more, you should check out their [article about color blindness](#).

## Dichromacy



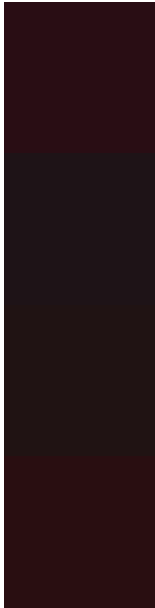
**Original Color**  
290D14

**Protanopia**  
171719

**Deuteranopia**  
1B1713



# Trichromacy



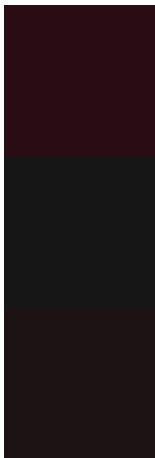
**Original Color**  
290D14

**Protanomaly**  
1E1317

**Deuteranomaly**  
201313

**Tritanomaly**  
290E11

# Monochromacy



**Original Color**  
290D14

**Achromatopsia**  
161616

**Achromatomaly**  
1D1315

# CSS Examples

## Text

The CSS property to change the color of the text to Hex 290D14 is called "color". The color property can be set on classes, ids or directly on the HTML element.

This example shows how text in the color #290D14 looks like.

```
.text, #text, p{  
    color:#290D14  
}
```

If you want to add a text shadow in that color use the text-shadow property, you can generate a text shadow directly with our [CSS Text Shadow Generator](#).

Here you see how black text with a 4 pixel #290D14 colored shadow looks like.

```
.shadow{ text-shadow: 4px 4px 2px #290D14
}
```

## Border

The CSS property to change the border of an element to Hex 290D14 is called "border". The border property can be set on classes, ids or directly on the HTML element.

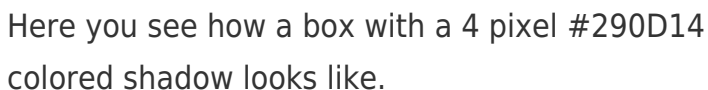
This example shows the color as border, it can be applied via the CSS property "border" or "border-color".

```
.border, #border, table{ border:4px solid
#290D14 }
```

If only the border color should be changed use the property `border-color`.

```
.border{ border-color:#290D14 }
```

If you want to add a box shadow in that color use:



Here you see how a box with a 4 pixel #290D14 colored shadow looks like.

```
.boxshadow{ -moz-box-shadow:4px 4px 4px  
4px #290D14; -webkit-box-shadow:4px 4px  
4px 4px #290D14; box-shadow:4px 4px 4px  
4px #290D14 }
```

# Background

The CSS property to change the background color of an element to Hex 290D14 is called "background". The background property can be set on classes, ids or directly on the HTML element.

```
.background, #background, body{  
background:#290D14 }
```

If only the background color should be changed can be used:

```
.background{ background-color:#290D14 }
```

This example shows the color as background, it is applied via the CSS property "background".

To optimize and compress your CSS code, you can use our [online CSS compressor and optimizer](#) based on csstidy. If you want to create a linear or radial gradient as background or border, check our [CSS Gradient Generator](#).



# Hey! You found this booklet interesting? Support Converting Colors with the new Membership Option!

The pro membership hides all ads, plus gives you double the colors in the color bucket, and more awesome pro features!

**[Learn more, Memberships starting at \\$2.50/m!](#)**

**Follow me  
on Twitter!**

@ConvertingColor