

Converting Colors

Hex(291405)

Have a look what the booklet for
Hex(291405) contains.

Hex(291405)	3
<i>Conversions</i>	4
<i>Details</i>	6
<i>Harmonies</i>	11
<i>Previews</i>	23
<i>Color Blindness Simulation</i>	26
<i>CSS Examples</i>	29

Color

Hex(291405)

Conversions

Conversions Part 1

Format	Color
Hex	291405
RGB	41, 20, 5
RGB Percent	16%, 8%, 2%
CMY	0.8392, 0.9216, 0.9804
CMYK	0.00, 0.51, 0.88, 0.84
HSL	25°, 78%, 9%
HSV	25°, 88%, 16%
XYZ	1.1920, 0.9827, 0.2704
YIQ	24.5690, 17.3310, -0.2130

Conversions

Conversions Part 2

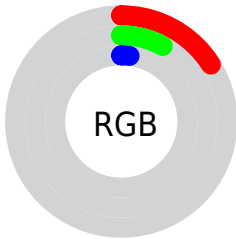
Format	Color
RYB	41, 31, 5
Decimal	2692101
CIELab	8.85, 9.07, 11.38
CIElCh	9, 14.556, 51.453
Yxy	0.9827, 0.4875, 0.4019
Android (android.graphics.Color)	4280882181 (0xFF291405)
YUV	24.5690, -9.6475, 14.4100
Hunter-Lab	9.9131, 4.1160, 5.3217

Details

The Hex color **291405** is a dark color, and the websafe version is hex **330000**. A complement of this color would be **051A29**, and the grayscale version is **191919**.

A 20% lighter version of the original color is **573F33**, and **000000** is the 20% darker color. If you saturate the color by 10%, you get **291201**, and if you desaturate by 10%, it is **291609**.

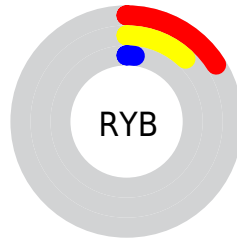
Distribution



Red (16%)

Green (8%)

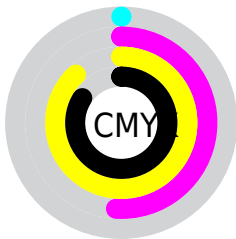
Blue (2%)



Red (16%)

Yellow (12%)

Blue (2%)

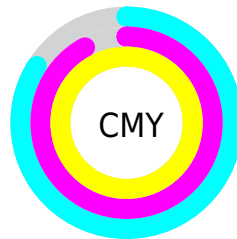


Cyan (0%)

Magenta (51%)

Yellow (88%)

Black (84%)



Cyan (84%)

Magenta (92%)

Yellow (98%)

Brightness & Saturation Gradients

These gradients show how the Hex color 291405 changes by changing the brightness by 10 percent. The first figure shows a shift by +10% for each color and the second figure -10%.

Similar to the brightness gradients but the following saturation gradients show a change of the Hex color 291405 by changing the saturation by 10% instead.

 291405

 291405

 FFF5E6

 0B0000

 573F33

 000000

 705649

 8A6E61

 A5887A

 C0A294

 DCBDAF

 F9D9CA

 291405

 291405

■ 291201

■ 291609

■ 291100

■ 29190D

■ 291B11

■ 291E15

■ 29201A

■ 29221E

■ 292522

■ 292726

■ 292A2A

Harmonies

Analogous

The Analogous color harmony consists of three colors that are next to each other on the color wheel.



2C1112



291405



231800

Triad

The Triadic color harmony groups three colors that are evenly spaced from another and form a triangle on the color wheel.



291405



001E16



15182B

Complementary

The Complementary color scheme is a pair of colors which are on the opposite of each other on the color wheel.



291405



051A29

Split Complementary

Split-complementary colors differ from the complementary color scheme. The scheme consists of three colors, the original color and two neighbors of the complement color.



021B2C



291405



001E20

Square

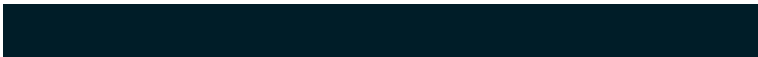
The Square scheme is like the rectangle color scheme, but the four colors are evenly spaced on the color wheel.



291405



0D1D0A



001D28



221425

Rectangle

The Rectangle color scheme consists of four colors that form a rectangle on the color wheel.



291405



1D1A00



001D28



10192C

Sweetspot

The Sweet Spot groups the original color and five complimentary colors.



291405



362D28



29051A



1C1713



9C9C9C



1C1C1C

Same Dimension

The Same Dimension uses a secret algorithm to generate beautiful new colors.



291405



361600



292605



141312



542300



D45800

Inverse Universe

The Inverse Universe completely reimagines the original color for something new.



051A29



001F36



050829



121414



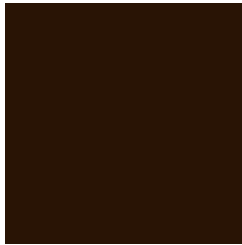
003154



007BD4

Previews

White Background



This preview shows how the Hex color 291405 looks on a white background.

Color Contrast Check

Large Text (above 18pt) WCAG AA ✓ Pass

Any Text WCAG AA ✓ Pass

Large Text (above 18pt) WCAG AAA ✓ Pass

Any Text WCAG AAA ✓ Pass

Black Background



Color Contrast Check

Large Text (above 18pt) WCAG AA × Fail

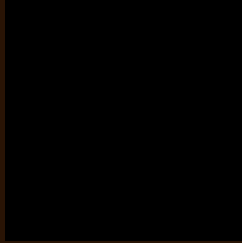
Any Text WCAG AA × Fail

Large Text (above 18pt) WCAG AAA × Fail

Any Text WCAG AAA × Fail

If you want to check with other color combinations, try the [Color Contrast Checker](#).

Hex 291405 Background



This preview shows how black text looks on a background with the Hex color 291405.

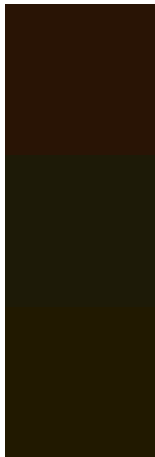


This preview shows how white text looks on a background with the Hex color 291405.

Color Blindness Simulation

Color vision deficiency is a very complex topic, and I could not describe the different causes any better than Wikipedia does, so if you want to learn more, you should check out their [article about color blindness](#).

Dichromacy



Original Color
291405

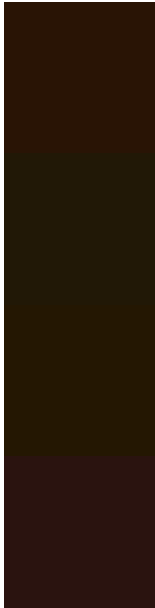
Protanopia
1D1A07

Deuteranopia
211900



Tritanopia
2A1314

Trichromacy



Original Color
291405

Protanomaly
211806

Deuteranomaly
241702

Tritanomaly
2A130F

Monochromacy



Original Color
291405

Achromatopsia
191919

Achromatomaly
1F1712

CSS Examples

Text

The CSS property to change the color of the text to Hex 291405 is called "color". The color property can be set on classes, ids or directly on the HTML element.

This example shows how text in the color #291405 looks like.

```
.text, #text, p{  
    color:#291405  
}
```

If you want to add a text shadow in that color use the text-shadow property, you can generate a text shadow directly with our [CSS Text Shadow Generator](#).

Here you see how black text with a 4 pixel #291405 colored shadow looks like.

```
.shadow{ text-shadow: 4px 4px 2px #291405
}
```

Border

The CSS property to change the border of an element to Hex 291405 is called "border". The border property can be set on classes, ids or directly on the HTML element.

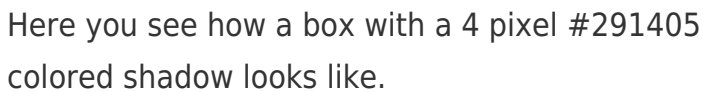
This example shows the color as border, it can be applied via the CSS property "border" or "border-color".

```
.border, #border, table{ border:4px solid
#291405 }
```

If only the border color should be changed use the property `border-color`.

```
.border{ border-color:#291405 }
```

If you want to add a box shadow in that color use:



Here you see how a box with a 4 pixel #291405 colored shadow looks like.

```
.boxshadow{ -moz-box-shadow:4px 4px 4px  
4px #291405; -webkit-box-shadow:4px 4px  
4px 4px #291405; box-shadow:4px 4px 4px  
4px #291405 }
```

Background

The CSS property to change the background color of an element to Hex 291405 is called "background". The background property can be set on classes, ids or directly on the HTML element.

```
.background, #background, body{  
background:#291405 }
```

If only the background color should be changed can be used:

```
.background{ background-color:#291405 }
```

This example shows the color as background, it is applied via the CSS property "background".

To optimize and compress your CSS code, you can use our [online CSS compressor and optimizer](#) based on csstidy. If you want to create a linear or radial gradient as background or border, check our [CSS Gradient Generator](#).

Hey! You found this booklet interesting? Support Converting Colors with the new Membership Option!

The pro membership hides all ads, plus gives you double the colors in the color bucket, and more awesome pro features!

[Learn more, Memberships starting at \\$2.50/m!](#)

**Follow me
on Twitter!**

@ConvertingColor