

Converting Colors

Hex(29180A)

Have a look what the booklet for
Hex(29180A) contains.

Hex(29180A)	3
<i>Conversions</i>	4
<i>Details</i>	6
<i>Harmonies</i>	11
<i>Previews</i>	23
<i>Color Blindness Simulation</i>	26
<i>CSS Examples</i>	29

Color

Hex(29180A)

Conversions

Conversions Part 1

Format	Color
Hex	29180A
RGB	41, 24, 10
RGB Percent	16%, 9%, 4%
CMY	0.8392, 0.9059, 0.9608
CMYK	0.00, 0.41, 0.76, 0.84
HSL	27°, 61%, 10%
HSV	27°, 76%, 16%
XYZ	1.2959, 1.1466, 0.4402
YIQ	27.4870, 14.6260, -0.7500

Conversions

Conversions Part 2

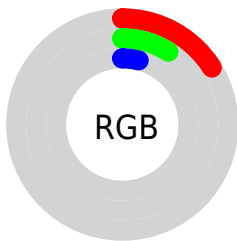
Format	Color
RYB	41, 36, 10
Decimal	2693130
CIELab	10.16, 6.70, 11.22
CIElCh	10, 13.066, 59.149
Yxy	1.1466, 0.4495, 0.3978
Android (android.graphics.Color)	4280883210 (0xFF29180A)
YUV	27.4870, -8.6211, 11.8509
Hunter-Lab	10.7079, 2.8631, 5.0583

Details

The Hex color **29180A** is a dark color, and the websafe version is hex **000000**. A complement of this color would be **0A1B29**, and the grayscale version is **1C1C1C**.

A 20% lighter version of the original color is **574336**, and **000000** is the 20% darker color. If you saturate the color by 10%, you get **291606**, and if you desaturate by 10%, it is **291A0E**.

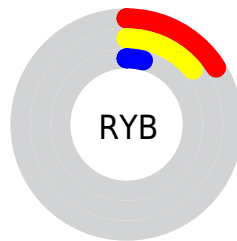
Distribution



Red (16%)

Green (9%)

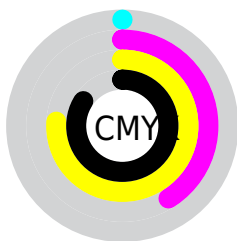
Blue (4%)



Red (16%)

Yellow (14%)

Blue (4%)

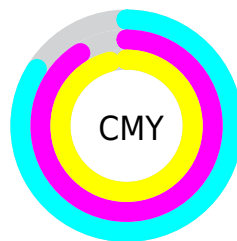


Cyan (0%)

Magenta (41%)

Yellow (76%)

Black (84%)



Cyan (84%)

Magenta (91%)

Yellow (96%)

Brightness & Saturation Gradients

These gradients show how the Hex color 29180A changes by changing the brightness by 10 percent. The first figure shows a shift by +10% for each color and the second figure -10%.

Similar to the brightness gradients but the following saturation gradients show a change of the Hex color 29180A by changing the saturation by 10% instead.

■ 29180A

■ 29180A

■ FFFAEA

■ 110000

■ 574336

■ 000000

■ 705A4D

■ 8A7365

■ A48C7E

■ C0A798

■ DCC2B2

■ F9DECE

■ 29180A

■ 29180A

■ 291606

■ 291A0E

■ 291402

■ 291C12

■ 291300

■ 291F16

■ 29211A

■ 29231E

■ 292523

■ 292827

■ 292A2B

■ 292C2F

Harmonies

Analogous

The Analogous color harmony consists of three colors that are next to each other on the color wheel.



2C1513



29180A



221B05

Triad

The Triadic color harmony groups three colors that are evenly spaced from another and form a triangle on the color wheel.



29180A



02201B



1C1A2B

Complementary

The Complementary color scheme is a pair of colors which are on the opposite of each other on the color wheel.



29180A



0A1B29

Split Complementary

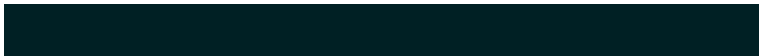
Split-complementary colors differ from the complementary color scheme. The scheme consists of three colors, the original color and two neighbors of the complement color.



0D1D2D



29180A



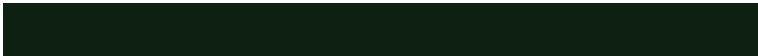
002024

Square

The Square scheme is like the rectangle color scheme, but the four colors are evenly spaced on the color wheel.



29180A



0E2012



001F2B



271625

Rectangle

The Rectangle color scheme consists of four colors that form a rectangle on the color wheel.



29180A



1D1D07



001F2B



181B2C

Sweetspot

The Sweet Spot groups the original color and five complimentary colors.



29180A



362F29



290A1B



1C1814



9C9C9C



1C1C1C

Same Dimension

The Same Dimension uses a secret algorithm to generate beautiful new colors.



29180A



361B05



29270A



141312



542600



D46000

Inverse Universe

The Inverse Universe completely reimagines the original color for something new.



0A1B29



052036



0A0C29



121314



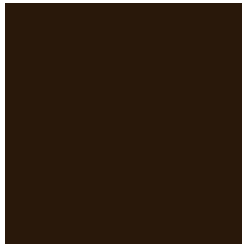
002E54



0074D4

Previews

White Background



This preview shows how the Hex color 29180A looks on a white background.

Color Contrast Check

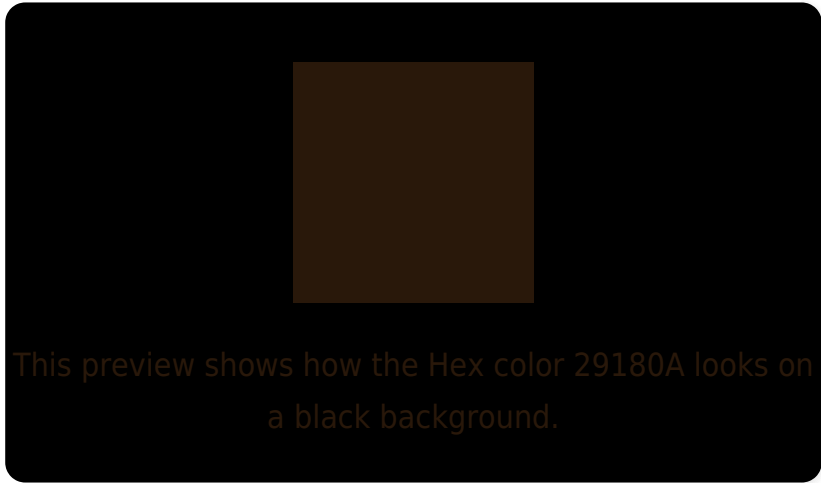
Large Text (above 18pt) WCAG AA ✓ Pass

Any Text WCAG AA ✓ Pass

Large Text (above 18pt) WCAG AAA ✓ Pass

Any Text WCAG AAA ✓ Pass

Black Background



Color Contrast Check

Large Text (above 18pt) WCAG AA × Fail

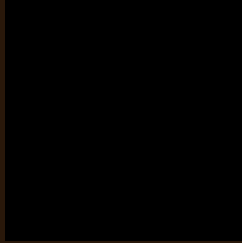
Any Text WCAG AA × Fail

Large Text (above 18pt) WCAG AAA × Fail

Any Text WCAG AAA × Fail

If you want to check with other color combinations, try the [Color Contrast Checker](#).

Hex 29180A Background



This preview shows how black text looks on a background with the Hex color 29180A.

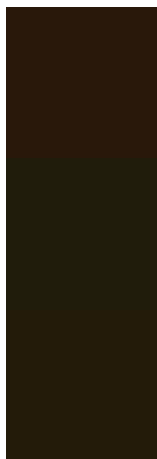


This preview shows how white text looks on a background with the Hex color 29180A.

Color Blindness Simulation

Color vision deficiency is a very complex topic, and I could not describe the different causes any better than Wikipedia does, so if you want to learn more, you should check out their [article about color blindness](#).

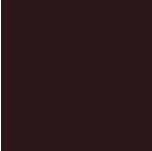
Dichromacy



Original Color
29180A

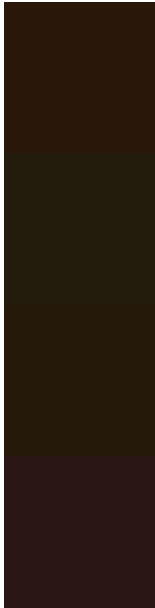
Protanopia
201C0B

Deuteranopia
231B09



Tritanopia
2A1718

Trichromacy



Original Color
29180A

Protanomaly
231B0B

Deuteranomaly
251A09

Tritanomaly
2A1713

Monochromacy



Original Color
29180A

Achromatopsia
1B1B1B

Achromatomaly
201A15

CSS Examples

Text

The CSS property to change the color of the text to Hex 29180A is called "color". The color property can be set on classes, ids or directly on the HTML element.

This example shows how text in the color #29180A looks like.

```
.text, #text, p{  
    color:#29180A  
}
```

If you want to add a text shadow in that color use the text-shadow property, you can generate a text shadow directly with our [CSS Text Shadow Generator](#).

Here you see how black text with a 4 pixel #29180A colored shadow looks like.

```
.shadow{ text-shadow: 4px 4px 2px #29180A
}
```

Border

The CSS property to change the border of an element to Hex 29180A is called "border". The border property can be set on classes, ids or directly on the HTML element.

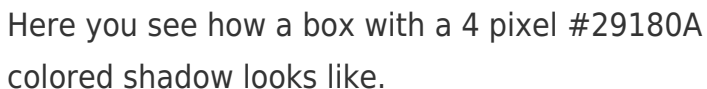
This example shows the color as border, it can be applied via the CSS property "border" or "border-color".

```
.border, #border, table{ border:4px solid
#29180A }
```

If only the border color should be changed use the property `border-color`.

```
.border{ border-color:#29180A }
```

If you want to add a box shadow in that color use:



Here you see how a box with a 4 pixel #29180A colored shadow looks like.

```
.boxshadow{ -moz-box-shadow:4px 4px 4px  
4px #29180A; -webkit-box-shadow:4px 4px  
4px 4px #29180A; box-shadow:4px 4px 4px  
4px #29180A }
```

Background

The CSS property to change the background color of an element to Hex 29180A is called "background". The background property can be set on classes, ids or directly on the HTML element.

```
.background, #background, body{  
background:#29180A }
```

If only the background color should be changed can be used:

```
.background{ background-color:#29180A }
```

This example shows the color as background, it is applied via the CSS property "background".

To optimize and compress your CSS code, you can use our [online CSS compressor and optimizer](#) based on csstidy. If you want to create a linear or radial gradient as background or border, check our [CSS Gradient Generator](#).

Hey! You found this booklet interesting? Support Converting Colors with the new Membership Option!

The pro membership hides all ads, plus gives you double the colors in the color bucket, and more awesome pro features!

[Learn more, Memberships starting at \\$2.50/m!](#)

**Follow me
on Twitter!**

@ConvertingColor