

Converting Colors

Hex(2A120F)

Have a look what the booklet for
Hex(2A120F) contains.

Hex(2A120F)	3
<i>Conversions</i>	4
<i>Details</i>	6
<i>Harmonies</i>	11
<i>Previews</i>	23
<i>Color Blindness Simulation</i>	26
<i>CSS Examples</i>	29

Color

Hex(2A120F)

Conversions

Conversions Part 1

Format	Color
Hex	2A120F
RGB	42, 18, 15
RGB Percent	16%, 7%, 6%
CMY	0.8353, 0.9294, 0.9412
CMYK	0.00, 0.57, 0.64, 0.84
HSL	7°, 47%, 11%
HSV	7°, 64%, 16%
XYZ	1.2574, 0.9593, 0.5708
YIQ	24.8340, 15.2670, 4.1550

Conversions

Conversions Part 2

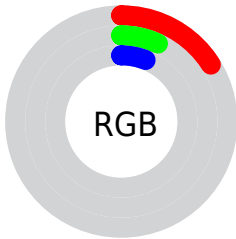
Format	Color
R_{YB}	42, 18, 15
Decimal	2757135
CIE Lab	8.65, 12.01, 6.75
CIE LCh	9, 13.776, 29.318
Yxy	0.9593, 0.4511, 0.3442
Android (android.graphics.Color)	4280947215 (0xFF2A120F)
YUV	24.8340, -4.8482, 15.0546
Hunter-Lab	9.7946, 5.7742, 3.4008

Details

The Hex color **2A120F** is a dark color, and the websafe version is hex **330000**. A complement of this color would be **0F272A**, and the grayscale version is **191919**.

A 20% lighter version of the original color is **593D3A**, and **000000** is the 20% darker color. If you saturate the color by 10%, you get **2A0E0B**, and if you desaturate by 10%, it is **2A1613**.

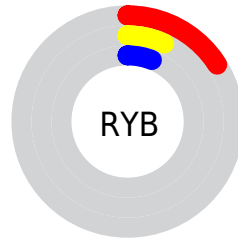
Distribution



Red (16%)

Green (7%)

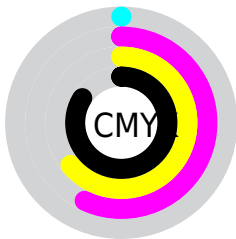
Blue (6%)



Red (16%)

Yellow (7%)

Blue (6%)

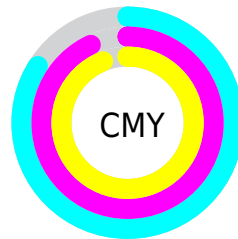


Cyan (0%)

Magenta (57%)

Yellow (64%)

Black (84%)



Cyan (84%)

Magenta (93%)

Yellow (94%)

Brightness & Saturation Gradients

These gradients show how the Hex color 2A120F changes by changing the brightness by 10 percent. The first figure shows a shift by +10% for each color and the second figure -10%.

Similar to the brightness gradients but the following saturation gradients show a change of the Hex color 2A120F by changing the saturation by 10% instead.

 2A120F

 2A120F

 FFF3EF

 0F0000

 593D3A

 000000

 725451

 8C6C69

 A68582

 C2A09C

 DEBBB7

 FBD6D2

 2A120F

 2A120F

■ 2A0E0B

■ 2A1613

■ 2A0B07

■ 2A1917

■ 2A0702

■ 2A1D1C

■ 2A0500

■ 2A2120

■ 2A2524

■ 2A2828

■ 2A2C2C

■ 2A3031

■ 2A3435

Harmonies

Analogous

The Analogous color harmony consists of three colors that are next to each other on the color wheel.



291119



2A120F



271503

Triad

The Triadic color harmony groups three colors that are evenly spaced from another and form a triangle on the color wheel.



2A120F



091D0E



081A2B

Complementary

The Complementary color scheme is a pair of colors which are on the opposite of each other on the color wheel.



2A120F



0F272A

Split Complementary

Split-complementary colors differ from the complementary color scheme. The scheme consists of three colors, the original color and two neighbors of the complement color.



001C28



2A120F



001E18

Square

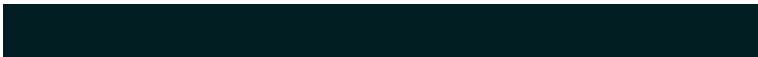
The Square scheme is like the rectangle color scheme, but the four colors are evenly spaced on the color wheel.



2A120F



171B02



001E21



191629

Rectangle

The Rectangle color scheme consists of four colors that form a rectangle on the color wheel.



2A120F



231700



001E21



031B2B

Sweetspot

The Sweet Spot groups the original color and five complimentary colors.



2A120F



362D2B



2A0F27



1C1616



9C9C9C



1C1C1C

Same Dimension

The Same Dimension uses a secret algorithm to generate beautiful new colors.



2A120F



36110C



2A1F0F



141312



540900



D41800

Inverse Universe

The Inverse Universe completely reimagines the original color for something new.



0F272A



0C3136



0F1A2A



121414



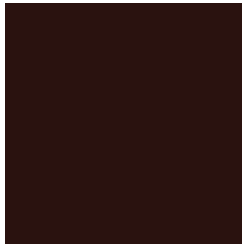
004B54



00BCD4

Previews

White Background



This preview shows how the Hex color 2A120F looks on a white background.

Color Contrast Check

Large Text (above 18pt) WCAG AA ✓ Pass

Any Text WCAG AA ✓ Pass

Large Text (above 18pt) WCAG AAA ✓ Pass

Any Text WCAG AAA ✓ Pass

Black Background



Color Contrast Check

Large Text (above 18pt) WCAG AA × Fail

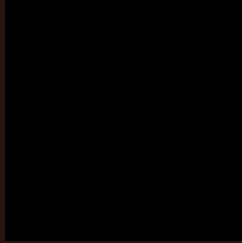
Any Text WCAG AA × Fail

Large Text (above 18pt) WCAG AAA × Fail

Any Text WCAG AAA × Fail

If you want to check with other color combinations, try the [Color Contrast Checker](#).

Hex 2A120F Background



This preview shows how black text looks on a background with the Hex color 2A120F.



This preview shows how white text looks on a background with the Hex color 2A120F.

Color Blindness Simulation

Color vision deficiency is a very complex topic, and I could not describe the different causes any better than Wikipedia does, so if you want to learn more, you should check out their [article about color blindness](#).

Dichromacy



Original Color

2A120F

Protanopia

1C1A12

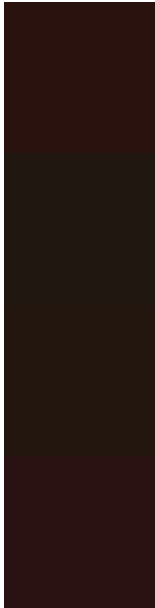
Deuteranopia

1F180E



Tritanopia
2A1113

Trichromacy



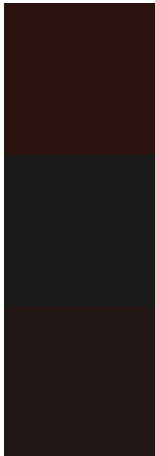
Original Color
2A120F

Protanomaly
211711

Deuteranomaly
23160E

Tritanomaly
2A1112

Monochromacy



Original Color
2A120F

Achromatopsia
191919

Achromatomaly
1F1615

CSS Examples

Text

The CSS property to change the color of the text to Hex 2A120F is called "color". The color property can be set on classes, ids or directly on the HTML element.

This example shows how text in the color #2A120F looks like.

```
.text, #text, p{  
    color:#2A120F  
}
```

If you want to add a text shadow in that color use the text-shadow property, you can generate a text shadow directly with our [CSS Text Shadow Generator](#).

Here you see how black text with a 4 pixel #2A120F colored shadow looks like.

```
.shadow{ text-shadow: 4px 4px 2px #2A120F
}
```

Border

The CSS property to change the border of an element to Hex 2A120F is called "border". The border property can be set on classes, ids or directly on the HTML element.

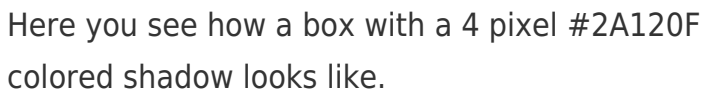
This example shows the color as border, it can be applied via the CSS property "border" or "border-color".

```
.border, #border, table{ border:4px solid
#2A120F }
```

If only the border color should be changed use the property `border-color`.

```
.border{ border-color:#2A120F }
```

If you want to add a box shadow in that color use:



Here you see how a box with a 4 pixel #2A120F colored shadow looks like.

```
.boxshadow{ -moz-box-shadow:4px 4px 4px  
4px #2A120F; -webkit-box-shadow:4px 4px  
4px 4px #2A120F; box-shadow:4px 4px 4px  
4px #2A120F }
```

Background

The CSS property to change the background color of an element to Hex 2A120F is called "background". The background property can be set on classes, ids or directly on the HTML element.

```
.background, #background, body{  
background:#2A120F }
```

If only the background color should be changed can be used:

```
.background{ background-color:#2A120F }
```

This example shows the color as background, it is applied via the CSS property "background".

To optimize and compress your CSS code, you can use our [online CSS compressor and optimizer](#) based on csstidy. If you want to create a linear or radial gradient as background or border, check our [CSS Gradient Generator](#).

Hey! You found this booklet interesting? Support Converting Colors with the new Membership Option!

The pro membership hides all ads, plus gives you double the colors in the color bucket, and more awesome pro features!

[Learn more, Memberships starting at \\$2.50/m!](#)

**Follow me
on Twitter!**

@ConvertingColor