

Converting Colors

Hex(2A180C)

Have a look what the booklet for
Hex(2A180C) contains.

Hex(2A180C)	3
<i>Conversions</i>	4
<i>Details</i>	6
<i>Harmonies</i>	11
<i>Previews</i>	23
<i>Color Blindness Simulation</i>	26
<i>CSS Examples</i>	29

Color

Hex(2A180C)

Conversions

Conversions Part 1

Format	Color
Hex	2A180C
RGB	42, 24, 12
RGB Percent	16%, 9%, 5%
CMY	0.8353, 0.9059, 0.9529
CMYK	0.00, 0.43, 0.71, 0.84
HSL	24°, 56%, 11%
HSV	24°, 71%, 16%
XYZ	1.3478, 1.1721, 0.5030
YIQ	28.0140, 14.5800, 0.0840

Conversions

Conversions Part 2

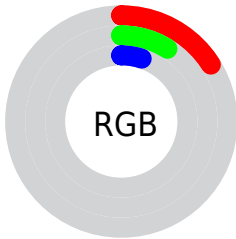
Format	Color
R_{YB}	42, 32, 12
Decimal	2758668
CIE Lab	10.35, 7.45, 10.65
CIE LCh	10, 12.995, 55.032
Yxy	1.1721, 0.4459, 0.3877
Android (android.graphics.Color)	4280948748 (0xFF2A180C)
YUV	28.0140, -7.8949, 12.2657
Hunter-Lab	10.8261, 3.2773, 4.8235

Details

The Hex color **2A180C** is a dark color, and the websafe version is hex **000000**. A complement of this color would be **0C1E2A**, and the grayscale version is **1C1C1C**.

A 20% lighter version of the original color is **584337**, and **000000** is the 20% darker color. If you saturate the color by 10%, you get **2A1508**, and if you desaturate by 10%, it is **2A1B10**.

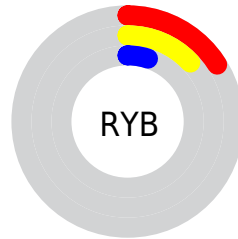
Distribution



Red (16%)

Green (9%)

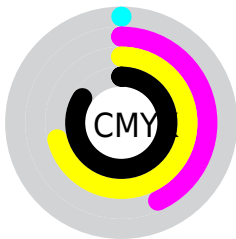
Blue (5%)



Red (16%)

Yellow (13%)

Blue (5%)

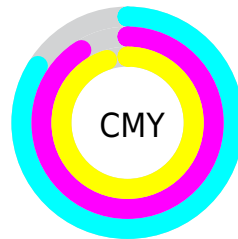


Cyan (0%)

Magenta (43%)

Yellow (71%)

Black (84%)



Cyan (84%)

Magenta (91%)

Yellow (95%)

Brightness & Saturation Gradients

These gradients show how the Hex color 2A180C changes by changing the brightness by 10 percent. The first figure shows a shift by +10% for each color and the second figure -10%.

Similar to the brightness gradients but the following saturation gradients show a change of the Hex color 2A180C by changing the saturation by 10% instead.

 2A180C


 2A180C

 FFFAEC

 130000

 584337

 000000

 715A4E

 8B7366

 A68C7F

 C1A799

 DDC2B4

 FADECF

 2A180C

 2A180C

■ 2A1508

■ 2A1B10

■ 2A1304

■ 2A1D14

■ 2A1100

■ 2A2019

■ 2A221D

■ 2A2521

■ 2A2725

■ 2A2A29

■ 2A2C2E

■ 2A2F32

Harmonies

Analogous

The Analogous color harmony consists of three colors that are next to each other on the color wheel.



2D1615



2A180C



241B06

Triad

The Triadic color harmony groups three colors that are evenly spaced from another and form a triangle on the color wheel.



2A180C



04211A



1B1A2C

Complementary

The Complementary color scheme is a pair of colors which are on the opposite of each other on the color wheel.



2A180C



0C1E2A

Split Complementary

Split-complementary colors differ from the complementary color scheme. The scheme consists of three colors, the original color and two neighbors of the complement color.



0C1E2E



2A180C



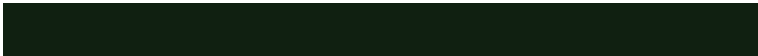
002123

Square

The Square scheme is like the rectangle color scheme, but the four colors are evenly spaced on the color wheel.



2A180C



102011



00202A



261726

Rectangle

The Rectangle color scheme consists of four colors that form a rectangle on the color wheel.



2A180C



1E1D07



00202A



161C2D

Sweetspot

The Sweet Spot groups the original color and five complimentary colors.



2A180C



362F2A



2A0C1E



1C1815



9C9C9C



1C1C1C

Same Dimension

The Same Dimension uses a secret algorithm to generate beautiful new colors.



2A180C



361A07



2A270C



141312



542200



D45500

Inverse Universe

The Inverse Universe completely reimagines the original color for something new.



0C1E2A



072336



0C0F2A



121414



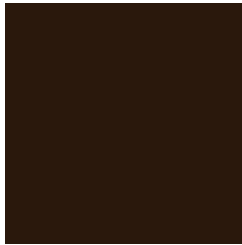
003254



007FD4

Previews

White Background



This preview shows how the Hex color 2A180C looks on a white background.

Color Contrast Check

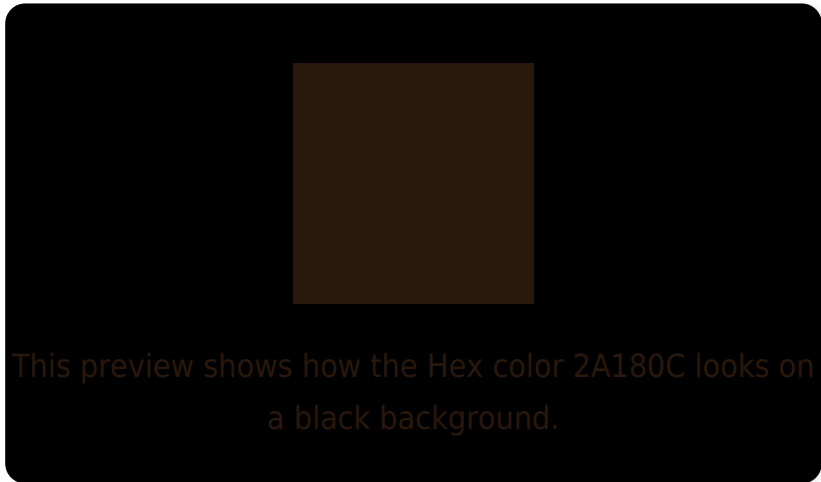
Large Text (above 18pt) WCAG AA ✓ Pass

Any Text WCAG AA ✓ Pass

Large Text (above 18pt) WCAG AAA ✓ Pass

Any Text WCAG AAA ✓ Pass

Black Background



Color Contrast Check

Large Text (above 18pt) WCAG AA × Fail

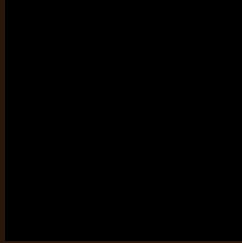
Any Text WCAG AA × Fail

Large Text (above 18pt) WCAG AAA × Fail

Any Text WCAG AAA × Fail

If you want to check with other color combinations, try the [Color Contrast Checker](#).

Hex 2A180C Background



This preview shows how black text looks on a background with the Hex color 2A180C.

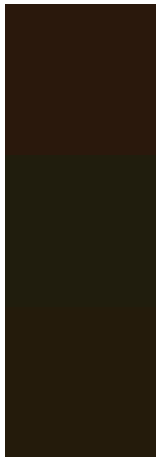


This preview shows how white text looks on a background with the Hex color 2A180C.

Color Blindness Simulation

Color vision deficiency is a very complex topic, and I could not describe the different causes any better than Wikipedia does, so if you want to learn more, you should check out their [article about color blindness](#).

Dichromacy



Original Color
2A180C

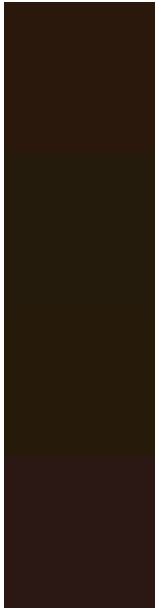
Protanopia
201D0D

Deuteranopia
241B0B



Tritanopia
2B1718

Trichromacy



Original Color
2A180C

Protanomaly
241B0D

Deuteranomaly
261A0B

Tritanomaly
2B1714

Monochromacy



Original Color
2A180C

Achromatopsia
1C1C1C

Achromatomaly
211B16

CSS Examples

Text

The CSS property to change the color of the text to Hex 2A180C is called "color". The color property can be set on classes, ids or directly on the HTML element.

This example shows how text in the color #2A180C looks like.

```
.text, #text, p{  
    color:#2A180C  
}
```

If you want to add a text shadow in that color use the text-shadow property, you can generate a text shadow directly with our [CSS Text Shadow Generator](#).

Here you see how black text with a 4 pixel #2A180C colored shadow looks like.

```
.shadow{ text-shadow: 4px 4px 2px #2A180C  
}
```

Border

The CSS property to change the border of an element to Hex 2A180C is called "border". The border property can be set on classes, ids or directly on the HTML element.

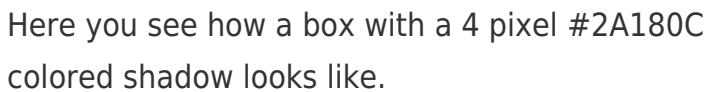
This example shows the color as border, it can be applied via the CSS property "border" or "border-color".

```
.border, #border, table{ border:4px solid  
#2A180C }
```

If only the border color should be changed use the property `border-color`.

```
.border{ border-color:#2A180C }
```

If you want to add a box shadow in that color use:



Here you see how a box with a 4 pixel #2A180C colored shadow looks like.

```
.boxshadow{ -moz-box-shadow:4px 4px 4px  
4px #2A180C; -webkit-box-shadow:4px 4px  
4px 4px #2A180C; box-shadow:4px 4px 4px  
4px #2A180C }
```

Background

The CSS property to change the background color of an element to Hex 2A180C is called "background". The background property can be set on classes, ids or directly on the HTML element.

```
.background, #background, body{  
background:#2A180C }
```

If only the background color should be changed can be used:

```
.background{ background-color:#2A180C }
```

This example shows the color as background, it is applied via the CSS property "background".

To optimize and compress your CSS code, you can use our [online CSS compressor and optimizer](#) based on csstidy. If you want to create a linear or radial gradient as background or border, check our [CSS Gradient Generator](#).

Hey! You found this booklet interesting? Support Converting Colors with the new Membership Option!

The pro membership hides all ads, plus gives you double the colors in the color bucket, and more awesome pro features!

[Learn more, Memberships starting at \\$2.50/m!](#)

**Follow me
on Twitter!**

@ConvertingColor