

Converting Colors

Hex(2A190D)

Have a look what the booklet for
Hex(2A190D) contains.

Hex(2A190D)	3
<i>Conversions</i>	4
<i>Details</i>	6
<i>Harmonies</i>	11
<i>Previews</i>	23
<i>Color Blindness Simulation</i>	26
<i>CSS Examples</i>	29

Color

Hex(2A190D)

Conversions

Conversions Part 1

Format	Color
Hex	2A190D
RGB	42, 25, 13
RGB Percent	16%, 10%, 5%
CMY	0.8353, 0.9020, 0.9490
CMYK	0.00, 0.40, 0.69, 0.84
HSL	25°, 53%, 11%
HSV	25°, 69%, 16%
XYZ	1.3751, 1.2166, 0.5431
YIQ	28.7150, 13.9840, -0.1280

Conversions

Conversions Part 2

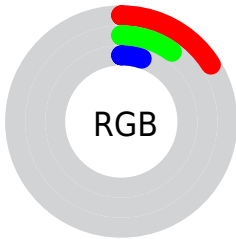
Format	Color
RYB	42, 33, 13
Decimal	2758925
CIELab	10.68, 6.84, 10.64
CIELCh	11, 12.652, 57.277
Yxy	1.2166, 0.4387, 0.3881
Android (android.graphics.Color)	4280949005 (0xFF2A190D)
YUV	28.7150, -7.7475, 11.6509
Hunter-Lab	11.0298, 2.9521, 4.8014

Details

The Hex color **2A190D** is a dark color, and the websafe version is hex **333333**. A complement of this color would be **0D1E2A**, and the grayscale version is **1D1D1D**.

A 20% lighter version of the original color is **584438**, and **000000** is the 20% darker color. If you saturate the color by 10%, you get **2A1709**, and if you desaturate by 10%, it is **2A1B11**.

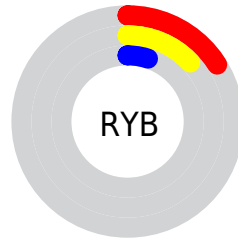
Distribution



Red (16%)

Green (10%)

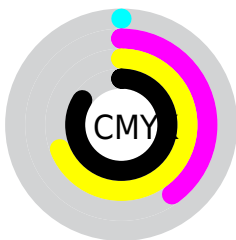
Blue (5%)



Red (16%)

Yellow (13%)

Blue (5%)

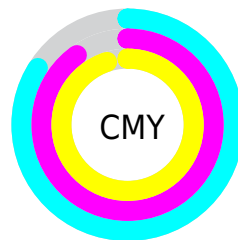


Cyan (0%)

Magenta (40%)

Yellow (69%)

Black (84%)



Cyan (84%)

Magenta (90%)

Yellow (95%)

Brightness & Saturation Gradients

These gradients show how the Hex color 2A190D changes by changing the brightness by 10 percent. The first figure shows a shift by +10% for each color and the second figure -10%.

Similar to the brightness gradients but the following saturation gradients show a change of the Hex color 2A190D by changing the saturation by 10% instead.

■ 2A190D

■ 2A190D

■ FFFCED

■ 130000

■ 584438

■ 000000

■ 715C4F

■ 8B7467

■ A68E80

■ C1A89A

■ DDC3B5

■ FADFD0

■ 2A190D

■ 2A190D

■ 2A1709

■ 2A1B11

■ 2A1405

■ 2A1E15

■ 2A1200

■ 2A201A

■ 2A1100

■ 2A231E

■ 2A2522

■ 2A2826

■ 2A2A2A

■ 2A2D2F

■ 2A2F33

Harmonies

Analogous

The Analogous color harmony consists of three colors that are next to each other on the color wheel.



2D1715



2A190D



241C08

Triad

The Triadic color harmony groups three colors that are evenly spaced from another and form a triangle on the color wheel.



2A190D



05211C



1D1B2C

Complementary

The Complementary color scheme is a pair of colors which are on the opposite of each other on the color wheel.



2A190D



0D1E2A

Split Complementary

Split-complementary colors differ from the complementary color scheme. The scheme consists of three colors, the original color and two neighbors of the complement color.



0E1E2E



2A190D



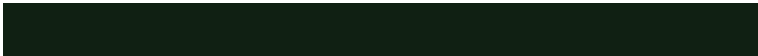
002124

Square

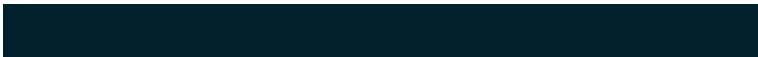
The Square scheme is like the rectangle color scheme, but the four colors are evenly spaced on the color wheel.



2A190D



102013



00202B



271826

Rectangle

The Rectangle color scheme consists of four colors that form a rectangle on the color wheel.



2A190D



1E1E09



00202B



181C2D

Sweetspot

The Sweet Spot groups the original color and five complimentary colors.



2A190D



362F2A



2A0D1E



1C1815



9C9C9C



1C1C1C

Same Dimension

The Same Dimension uses a secret algorithm to generate beautiful new colors.



2A190D



361B09



2A270D



141312



542300



D45800

Inverse Universe

The Inverse Universe completely reimagines the original color for something new.



0D1E2A



092336



0D102A



121414



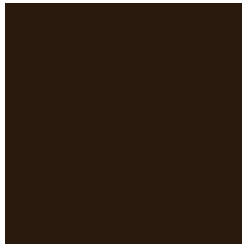
003154



007CD4

Previews

White Background



This preview shows how the Hex color 2A190D looks on a white background.

Color Contrast Check

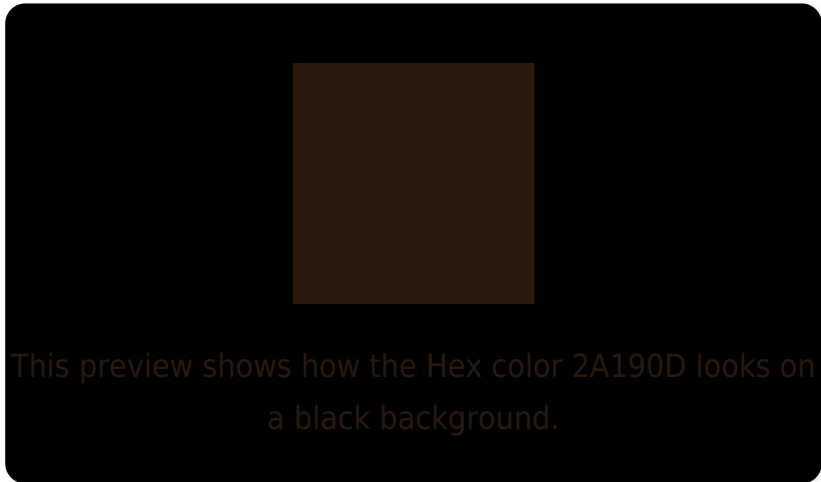
Large Text (above 18pt) WCAG AA ✓ Pass

Any Text WCAG AA ✓ Pass

Large Text (above 18pt) WCAG AAA ✓ Pass

Any Text WCAG AAA ✓ Pass

Black Background



Color Contrast Check

Large Text (above 18pt) WCAG AA × Fail

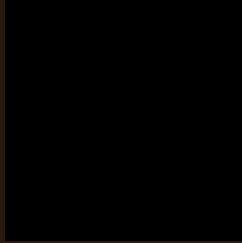
Any Text WCAG AA × Fail

Large Text (above 18pt) WCAG AAA × Fail

Any Text WCAG AAA × Fail

If you want to check with other color combinations, try the [Color Contrast Checker](#).

Hex 2A190D Background



This preview shows how black text looks on a background with the Hex color 2A190D.

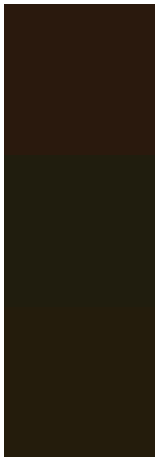


This preview shows how white text looks on a background with the Hex color 2A190D.

Color Blindness Simulation

Color vision deficiency is a very complex topic, and I could not describe the different causes any better than Wikipedia does, so if you want to learn more, you should check out their [article about color blindness](#).

Dichromacy



Original Color
2A190D

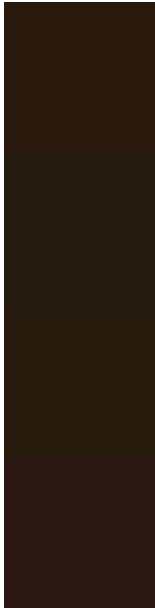
Protanopia
201D0E

Deuteranopia
241C0C



Tritanopia
2B1819

Trichromacy



Original Color
2A190D

Protanomaly
241C0E

Deuteranomaly
261B0C

Tritanomaly
2B1815

Monochromacy



Original Color
2A190D

Achromatopsia
1D1D1D

Achromatomaly
221C17

CSS Examples

Text

The CSS property to change the color of the text to Hex 2A190D is called "color". The color property can be set on classes, ids or directly on the HTML element.

This example shows how text in the color #2A190D looks like.

```
.text, #text, p{  
    color:#2A190D  
}
```

If you want to add a text shadow in that color use the text-shadow property, you can generate a text shadow directly with our [CSS Text Shadow Generator](#).

Here you see how black text with a 4 pixel #2A190D colored shadow looks like.

```
.shadow{ text-shadow: 4px 4px 2px #2A190D
}
```

Border

The CSS property to change the border of an element to Hex 2A190D is called "border". The border property can be set on classes, ids or directly on the HTML element.

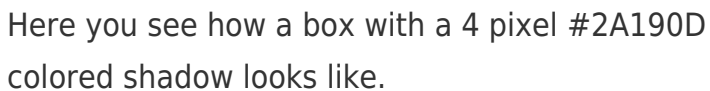
This example shows the color as border, it can be applied via the CSS property "border" or "border-color".

```
.border, #border, table{ border:4px solid
#2A190D }
```

If only the border color should be changed use the property `border-color`.

```
.border{ border-color:#2A190D }
```

If you want to add a box shadow in that color use:



Here you see how a box with a 4 pixel #2A190D colored shadow looks like.

```
.boxshadow{ -moz-box-shadow:4px 4px 4px  
4px #2A190D; -webkit-box-shadow:4px 4px  
4px 4px #2A190D; box-shadow:4px 4px 4px  
4px #2A190D }
```

Background

The CSS property to change the background color of an element to Hex 2A190D is called "background". The background property can be set on classes, ids or directly on the HTML element.

```
.background, #background, body{  
background:#2A190D }
```

If only the background color should be changed can be used:

```
.background{ background-color:#2A190D }
```

This example shows the color as background, it is applied via the CSS property "background".

To optimize and compress your CSS code, you can use our [online CSS compressor and optimizer](#) based on csstidy. If you want to create a linear or radial gradient as background or border, check our [CSS Gradient Generator](#).

Hey! You found this booklet interesting? Support Converting Colors with the new Membership Option!

The pro membership hides all ads, plus gives you double the colors in the color bucket, and more awesome pro features!

[Learn more, Memberships starting at \\$2.50/m!](#)

**Follow me
on Twitter!**

@ConvertingColor