

Converting Colors

Hex(2A1E13)

Have a look what the booklet for
Hex(2A1E13) contains.

Hex(2A1E13)	3
<i>Conversions</i>	4
<i>Details</i>	6
<i>Harmonies</i>	11
<i>Previews</i>	23
<i>Color Blindness Simulation</i>	26
<i>CSS Examples</i>	29

Color

Hex(2A1E13)

Conversions

Conversions Part 1

Format	Color
Hex	2A1E13
RGB	42, 30, 19
RGB Percent	16%, 12%, 7%
CMY	0.8353, 0.8824, 0.9255
CMYK	0.00, 0.29, 0.55, 0.84
HSL	29°, 38%, 12%
HSV	29°, 55%, 16%
XYZ	1.5367, 1.4678, 0.8184
YIQ	32.3340, 10.6830, -0.8770

Conversions

Conversions Part 2

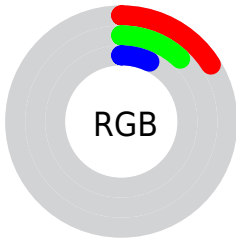
Format	Color
RYB	42, 40, 19
Decimal	2760211
CIELab	12.40, 4.01, 9.68
CIELCh	12, 10.474, 67.501
Yxy	1.4678, 0.4020, 0.3840
Android (android.graphics.Color)	4280950291 (0xFF2A1E13)
YUV	32.3340, -6.5737, 8.4771
Hunter-Lab	12.1153, 1.4385, 4.4755

Details

The Hex color **2A1E13** is a dark color, and the websafe version is hex **333333**. A complement of this color would be **131F2A**, and the grayscale version is **202020**.

A 20% lighter version of the original color is **584A3D**, and **000000** is the 20% darker color. If you saturate the color by 10%, you get **2A1C0F**, and if you desaturate by 10%, it is **2A2017**.

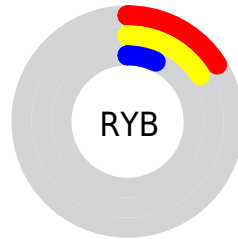
Distribution



Red (16%)

Green (12%)

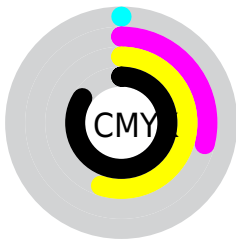
Blue (7%)



Red (16%)

Yellow (16%)

Blue (7%)

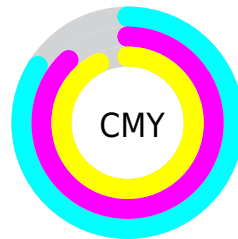


Cyan (0%)

Magenta (29%)

Yellow (55%)

Black (84%)



Cyan (84%)

Magenta (88%)

Yellow (93%)

Brightness & Saturation Gradients

These gradients show how the Hex color 2A1E13 changes by changing the brightness by 10 percent. The first figure shows a shift by +10% for each color and the second figure -10%.

Similar to the brightness gradients but the following saturation gradients show a change of the Hex color 2A1E13 by changing the saturation by 10% instead.

■ 2A1E13

■ 2A1E13

■ FFFFF3

■ 150500

■ 584A3D

■ 000000

■ 716154

■ 8B7A6D

■ A59486

■ C0AFA0

■ DCCABB

■ F9E6D7

■ 2A1E13

■ 2A1E13

■ 2A1C0F

■ 2A2017

■ 2A1A0B

■ 2A221B

■ 2A1706

■ 2A2520

■ 2A1502

■ 2A2724

■ 2A1400

■ 2A2928

■ 2A2B2C

■ 2A2D30

■ 2A3035

■ 2A3239

Harmonies

Analogous

The Analogous color harmony consists of three colors that are next to each other on the color wheel.



2E1C18



2A1E13



242012

Triad

The Triadic color harmony groups three colors that are evenly spaced from another and form a triangle on the color wheel.



2A1E13



0B2422



241E2C

Complementary

The Complementary color scheme is a pair of colors which are on the opposite of each other on the color wheel.



2A1E13



131F2A

Split Complementary

Split-complementary colors differ from the complementary color scheme. The scheme consists of three colors, the original color and two neighbors of the complement color.



19202F



2A1E13



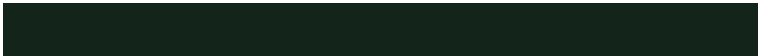
082429

Square

The Square scheme is like the rectangle color scheme, but the four colors are evenly spaced on the color wheel.



2A1E13



13241B



0F232D



2B1C26

Rectangle

The Rectangle color scheme consists of four colors that form a rectangle on the color wheel.



2A1E13



1E2213



0F232D



201F2D

Sweetspot

The Sweet Spot groups the original color and five complimentary colors.



2A1E13



36312D



2A131F



1C1917



9C9C9C



1C1C1C

Same Dimension

The Same Dimension uses a secret algorithm to generate beautiful new colors.



2A1E13



362312



2A2913



141312



542800



D46500

Inverse Universe

The Inverse Universe completely reimagines the original color for something new.



131F2A



122536



13142A



121314



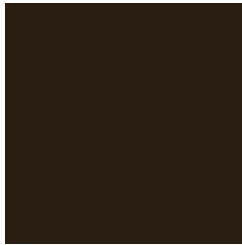
002C54



006ED4

Previews

White Background



This preview shows how the Hex color 2A1E13 looks on a white background.

Color Contrast Check

Large Text (above 18pt) WCAG AA ✓ Pass

Any Text WCAG AA ✓ Pass

Large Text (above 18pt) WCAG AAA ✓ Pass

Any Text WCAG AAA ✓ Pass

Black Background



Color Contrast Check

Large Text (above 18pt) WCAG AA × Fail

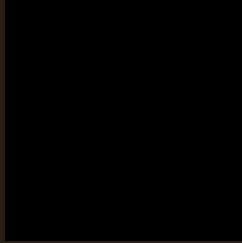
Any Text WCAG AA × Fail

Large Text (above 18pt) WCAG AAA × Fail

Any Text WCAG AAA × Fail

If you want to check with other color combinations, try the [Color Contrast Checker](#).

Hex 2A1E13 Background



This preview shows how black text looks on a background with the Hex color 2A1E13.

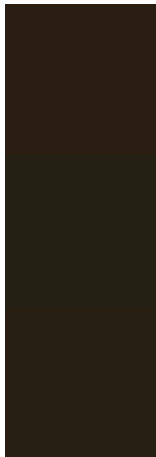


This preview shows how white text looks on a background with the Hex color 2A1E13.

Color Blindness Simulation

Color vision deficiency is a very complex topic, and I could not describe the different causes any better than Wikipedia does, so if you want to learn more, you should check out their [article about color blindness](#).

Dichromacy



Original Color
2A1E13

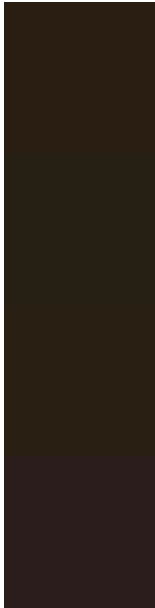
Protanopia
242114

Deuteranopia
281F13



Tritanopia
2B1D1F

Trichromacy



Original Color
2A1E13

Protanomaly
262014

Deuteranomaly
291F13

Tritanomaly
2B1D1B

Monochromacy



Original Color
2A1E13

Achromatopsia
202020

Achromatomaly
241F1B

CSS Examples

Text

The CSS property to change the color of the text to Hex 2A1E13 is called "color". The color property can be set on classes, ids or directly on the HTML element.

This example shows how text in the color #2A1E13 looks like.

```
.text, #text, p{  
    color:#2A1E13  
}
```

If you want to add a text shadow in that color use the text-shadow property, you can generate a text shadow directly with our [CSS Text Shadow Generator](#).

Here you see how black text with a 4 pixel #2A1E13 colored shadow looks like.

```
.shadow{ text-shadow: 4px 4px 2px #2A1E13
}
```

Border

The CSS property to change the border of an element to Hex 2A1E13 is called "border". The border property can be set on classes, ids or directly on the HTML element.

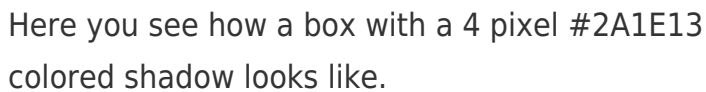
This example shows the color as border, it can be applied via the CSS property "border" or "border-color".

```
.border, #border, table{ border:4px solid
#2A1E13 }
```

If only the border color should be changed use the property `border-color`.

```
.border{ border-color:#2A1E13 }
```

If you want to add a box shadow in that color use:



Here you see how a box with a 4 pixel #2A1E13 colored shadow looks like.

```
.boxshadow{ -moz-box-shadow:4px 4px 4px  
4px #2A1E13; -webkit-box-shadow:4px 4px  
4px 4px #2A1E13; box-shadow:4px 4px 4px  
4px #2A1E13 }
```

Background

The CSS property to change the background color of an element to Hex 2A1E13 is called "background". The background property can be set on classes, ids or directly on the HTML element.

```
.background, #background, body{  
background:#2A1E13 }
```

If only the background color should be changed can be used:

```
.background{ background-color:#2A1E13 }
```

This example shows the color as background, it is applied via the CSS property "background".

To optimize and compress your CSS code, you can use our [online CSS compressor and optimizer](#) based on csstidy. If you want to create a linear or radial gradient as background or border, check our [CSS Gradient Generator](#).

Hey! You found this booklet interesting? Support Converting Colors with the new Membership Option!

The pro membership hides all ads, plus gives you double the colors in the color bucket, and more awesome pro features!

[Learn more, Memberships starting at \\$2.50/m!](#)

**Follow me
on Twitter!**

@ConvertingColor