

Converting Colors

Hex(2B1908)

Have a look what the booklet for
Hex(2B1908) contains.

Hex(2B1908)	3
<i>Conversions</i>	4
<i>Details</i>	6
<i>Harmonies</i>	11
<i>Previews</i>	23
<i>Color Blindness Simulation</i>	26
<i>CSS Examples</i>	29

Color

Hex(2B1908)

Conversions

Conversions Part 1

Format	Color
Hex	2B1908
RGB	43, 25, 8
RGB Percent	17%, 10%, 3%
CMY	0.8314, 0.9020, 0.9686
CMYK	0.00, 0.42, 0.81, 0.83
HSL	29°, 69%, 10%
HSV	29°, 81%, 17%
XYZ	1.3877, 1.2264, 0.3933
YIQ	28.4440, 16.1850, -1.4710

Conversions

Conversions Part 2

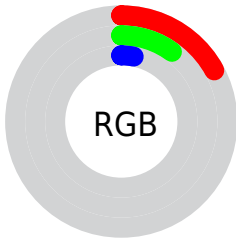
Format	Color
RYB	43, 41, 8
Decimal	2824456
CIELab	10.75, 6.90, 12.91
CIELCh	11, 14.639, 61.872
Yxy	1.2264, 0.4614, 0.4078
Android (android.graphics.Color)	4281014536 (0xFF2B1908)
YUV	28.4440, -10.0789, 12.7656
Hunter-Lab	11.0742, 2.9881, 5.6463

Details

The Hex color **2B1908** is a dark color, and the websafe version is hex **333333**. A complement of this color would be **081A2B**, and the grayscale version is **1D1D1D**.

A 20% lighter version of the original color is **5A4435**, and **000000** is the 20% darker color. If you saturate the color by 10%, you get **2B1704**, and if you desaturate by 10%, it is **2B1B0C**.

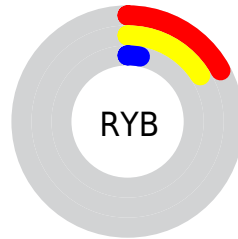
Distribution



Red (17%)

Green (10%)

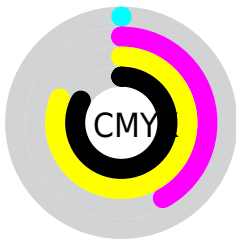
Blue (3%)



Red (17%)

Yellow (16%)

Blue (3%)

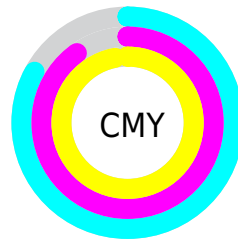


Cyan (0%)

Magenta (42%)

Yellow (81%)

Black (83%)



Cyan (83%)

Magenta (90%)

Yellow (97%)

Brightness & Saturation Gradients

These gradients show how the Hex color 2B1908 changes by changing the brightness by 10 percent. The first figure shows a shift by +10% for each color and the second figure -10%.

Similar to the brightness gradients but the following saturation gradients show a change of the Hex color 2B1908 by changing the saturation by 10% instead.

 2B1908

 2B1908

 FFFCE8

 130000

 5A4435

 000000

 735C4B

 8D7463

 A78E7C

 C3A896

 DFC3B1

 FCDFCC

 2B1908

 2B1908

■ 2B1704

■ 2B1B0C

■ 2B1500

■ 2B1D11

■ 2B2015

■ 2B2219

■ 2B241E

■ 2B2622

■ 2B2826

■ 2B2B2A

■ 2B2D2F

Harmonies

Analogous

The Analogous color harmony consists of three colors that are next to each other on the color wheel.



2F1613



2B1908



231D03

Triad

The Triadic color harmony groups three colors that are evenly spaced from another and form a triangle on the color wheel.



2B1908



00221D



1F1A2E

Complementary

The Complementary color scheme is a pair of colors which are on the opposite of each other on the color wheel.



2B1908



081A2B

Split Complementary

Split-complementary colors differ from the complementary color scheme. The scheme consists of three colors, the original color and two neighbors of the complement color.



0D1E31



2B1908



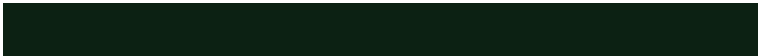
002227

Square

The Square scheme is like the rectangle color scheme, but the four colors are evenly spaced on the color wheel.



2B1908



0C2113



00202E



2A1727

Rectangle

The Rectangle color scheme consists of four colors that form a rectangle on the color wheel.



2B1908



1D1F06



00202E



1A1B2F

Sweetspot

The Sweet Spot groups the original color and five complimentary colors.



2B1908



38312B



2B081A



1C1814



9C9C9C



1C1C1C

Same Dimension

The Same Dimension uses a secret algorithm to generate beautiful new colors.



2B1908



381C01



2B2A08



141312



542900



D46700

Inverse Universe

The Inverse Universe completely reimagines the original color for something new.



081A2B



011D38



08092B



121314



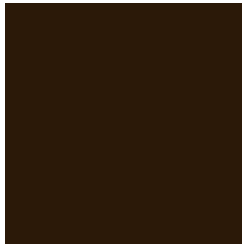
002B54



006DD4

Previews

White Background



This preview shows how the Hex color 2B1908 looks on a white background.

Color Contrast Check

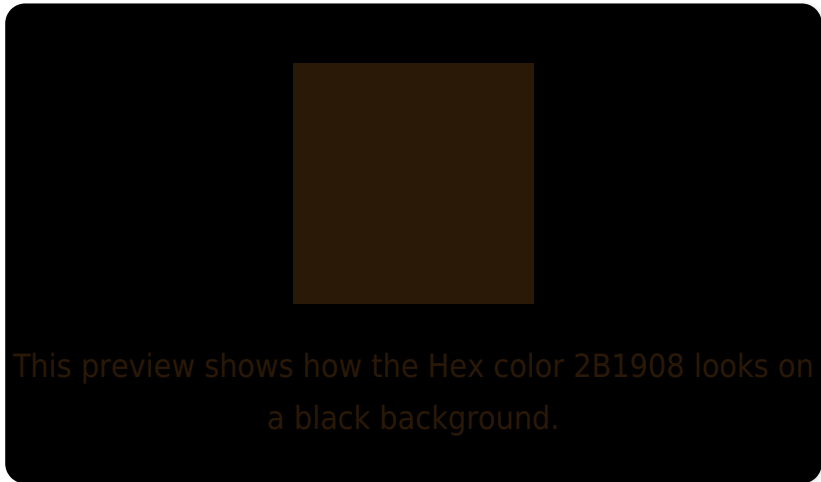
Large Text (above 18pt) WCAG AA ✓ Pass

Any Text WCAG AA ✓ Pass

Large Text (above 18pt) WCAG AAA ✓ Pass

Any Text WCAG AAA ✓ Pass

Black Background



Color Contrast Check

Large Text (above 18pt) WCAG AA × Fail

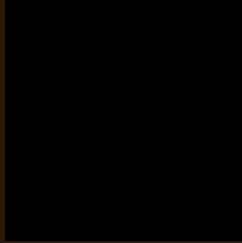
Any Text WCAG AA × Fail

Large Text (above 18pt) WCAG AAA × Fail

Any Text WCAG AAA × Fail

If you want to check with other color combinations, try the [Color Contrast Checker](#).

Hex 2B1908 Background



This preview shows how black text looks on a background with the Hex color 2B1908.

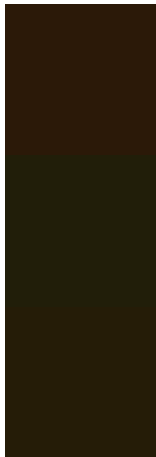


This preview shows how white text looks on a background with the Hex color 2B1908.

Color Blindness Simulation

Color vision deficiency is a very complex topic, and I could not describe the different causes any better than Wikipedia does, so if you want to learn more, you should check out their [article about color blindness](#).

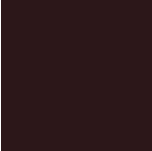
Dichromacy



Original Color
2B1908

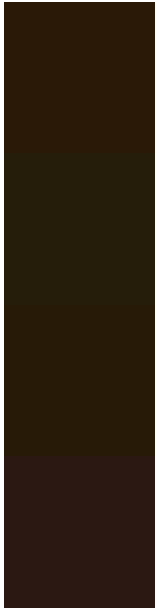
Protanopia
211E09

Deuteranopia
251C07



Tritanopia
2C1719

Trichromacy



Original Color
2B1908

Protanomaly
251C09

Deuteranomaly
271B07

Tritanomaly
2C1813

Monochromacy



Original Color
2B1908

Achromatopsia
1C1C1C

Achromatomaly
211B15

CSS Examples

Text

The CSS property to change the color of the text to Hex 2B1908 is called "color". The color property can be set on classes, ids or directly on the HTML element.

This example shows how text in the color #2B1908 looks like.

```
.text, #text, p{  
    color:#2B1908  
}
```

If you want to add a text shadow in that color use the text-shadow property, you can generate a text shadow directly with our [CSS Text Shadow Generator](#).

Here you see how black text with a 4 pixel #2B1908 colored shadow looks like.

```
.shadow{ text-shadow: 4px 4px 2px #2B1908
}
```

Border

The CSS property to change the border of an element to Hex 2B1908 is called "border". The border property can be set on classes, ids or directly on the HTML element.

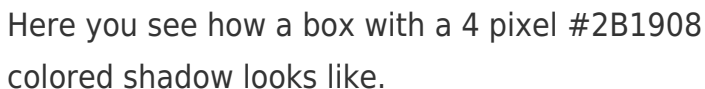
This example shows the color as border, it can be applied via the CSS property "border" or "border-color".

```
.border, #border, table{ border:4px solid
#2B1908 }
```

If only the border color should be changed use the property `border-color`.

```
.border{ border-color:#2B1908 }
```

If you want to add a box shadow in that color use:



Here you see how a box with a 4 pixel #2B1908 colored shadow looks like.

```
.boxshadow{ -moz-box-shadow:4px 4px 4px  
4px #2B1908; -webkit-box-shadow:4px 4px  
4px 4px #2B1908; box-shadow:4px 4px 4px  
4px #2B1908 }
```

Background

The CSS property to change the background color of an element to Hex 2B1908 is called "background". The background property can be set on classes, ids or directly on the HTML element.

```
.background, #background, body{  
background:#2B1908 }
```

If only the background color should be changed can be used:

```
.background{ background-color:#2B1908 }
```

This example shows the color as background, it is applied via the CSS property "background".

To optimize and compress your CSS code, you can use our [online CSS compressor and optimizer](#) based on csstidy. If you want to create a linear or radial gradient as background or border, check our [CSS Gradient Generator](#).

Hey! You found this booklet interesting? Support Converting Colors with the new Membership Option!

The pro membership hides all ads, plus gives you double the colors in the color bucket, and more awesome pro features!

[Learn more, Memberships starting at \\$2.50/m!](#)

**Follow me
on Twitter!**

@ConvertingColor