

Converting Colors

Hex(2B1C10)

Have a look what the booklet for
Hex(2B1C10) contains.

Hex(2B1C10)	3
<i>Conversions</i>	4
<i>Details</i>	6
<i>Harmonies</i>	11
<i>Previews</i>	23
<i>Color Blindness Simulation</i>	26
<i>CSS Examples</i>	29

Color

Hex(2B1C10)

Conversions

Conversions Part 1

Format	Color
Hex	2B1C10
RGB	43, 28, 16
RGB Percent	17%, 11%, 6%
CMY	0.8314, 0.8902, 0.9373
CMYK	0.00, 0.35, 0.63, 0.83
HSL	27°, 46%, 12%
HSV	27°, 63%, 17%
XYZ	1.5050, 1.3815, 0.6775
YIQ	31.1170, 12.7920, -0.5520

Conversions

Conversions Part 2

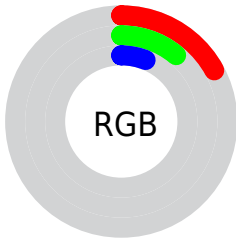
Format	Color
RYB	43, 38, 16
Decimal	2825232
CIELab	11.83, 5.58, 10.71
CIELCh	12, 12.080, 62.475
Yxy	1.3815, 0.4223, 0.3876
Android (android.graphics.Color)	4281015312 (0xFF2B1C10)
YUV	31.1170, -7.4527, 10.4214
Hunter-Lab	11.7538, 2.2874, 4.8099

Details

The Hex color **2B1C10** is a dark color, and the websafe version is hex **333333**. A complement of this color would be **101F2B**, and the grayscale version is **1F1F1F**.

A 20% lighter version of the original color is **5A473A**, and **000000** is the 20% darker color. If you saturate the color by 10%, you get **2B1A0C**, and if you desaturate by 10%, it is **2B1E14**.

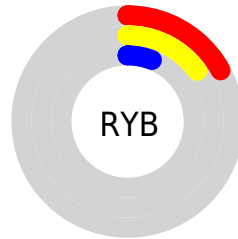
Distribution



Red (17%)

Green (11%)

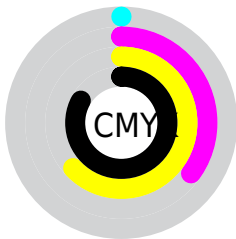
Blue (6%)



Red (17%)

Yellow (15%)

Blue (6%)

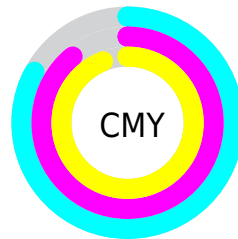


Cyan (0%)

Magenta (35%)

Yellow (63%)

Black (83%)



Cyan (83%)

Magenta (89%)

Yellow (94%)

Brightness & Saturation Gradients

These gradients show how the Hex color 2B1C10 changes by changing the brightness by 10 percent. The first figure shows a shift by +10% for each color and the second figure -10%.

Similar to the brightness gradients but the following saturation gradients show a change of the Hex color 2B1C10 by changing the saturation by 10% instead.

■ 2B1C10

■ 2B1C10

■ FFFFF0

■ 150200

■ 5A473A

■ 000000

■ 725F51

■ 8C786A

■ A79183

■ C2AC9D

■ DEC7B8

■ FBE3D3

■ 2B1C10

■ 2B1C10

■ 2B1A0C

■ 2B1E14

■ 2B1707

■ 2B2119

■ 2B1503

■ 2B231D

■ 2B1300

■ 2B2621

■ 2B2826

■ 2B2A2A

■ 2B2D2E

■ 2B2F32

■ 2B3237

Harmonies

Analogous

The Analogous color harmony consists of three colors that are next to each other on the color wheel.



2F1A17



2B1C10



241F0D

Triad

The Triadic color harmony groups three colors that are evenly spaced from another and form a triangle on the color wheel.



2B1C10



072420



211D2D

Complementary

The Complementary color scheme is a pair of colors which are on the opposite of each other on the color wheel.



2B1C10



101F2B

Split Complementary

Split-complementary colors differ from the complementary color scheme. The scheme consists of three colors, the original color and two neighbors of the complement color.



142030



2B1C10



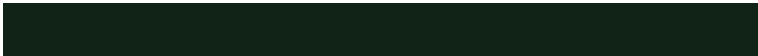
012328

Square

The Square scheme is like the rectangle color scheme, but the four colors are evenly spaced on the color wheel.



2B1C10



112317



06222E



2A1A27

Rectangle

The Rectangle color scheme consists of four colors that form a rectangle on the color wheel.



2B1C10



1F210F



06222E



1D1E2E

Sweetspot

The Sweet Spot groups the original color and five complimentary colors.



2B1C10



38322D



2B101F



1C1816



9C9C9C



1C1C1C

Same Dimension

The Same Dimension uses a secret algorithm to generate beautiful new colors.



2B1C10



38210E



2B2910



141312



542500



D45E00

Inverse Universe

The Inverse Universe completely reimagines the original color for something new.



101F2B



0E2538



10122B



121314



002F54



0076D4

Previews

White Background



This preview shows how the Hex color 2B1C10 looks on a white background.

Color Contrast Check

Large Text (above 18pt) WCAG AA ✓ Pass

Any Text WCAG AA ✓ Pass

Large Text (above 18pt) WCAG AAA ✓ Pass

Any Text WCAG AAA ✓ Pass

Black Background



Color Contrast Check

Large Text (above 18pt) WCAG AA × Fail

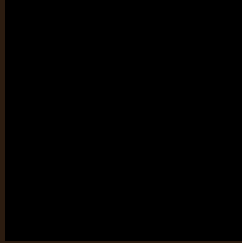
Any Text WCAG AA × Fail

Large Text (above 18pt) WCAG AAA × Fail

Any Text WCAG AAA × Fail

If you want to check with other color combinations, try the [Color Contrast Checker](#).

Hex 2B1C10 Background



This preview shows how black text looks on a background with the Hex color 2B1C10.

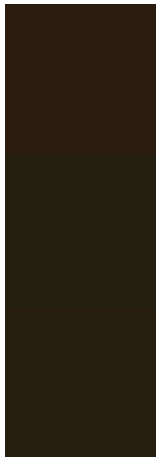


This preview shows how white text looks on a background with the Hex color 2B1C10.

Color Blindness Simulation

Color vision deficiency is a very complex topic, and I could not describe the different causes any better than Wikipedia does, so if you want to learn more, you should check out their [article about color blindness](#).

Dichromacy



Original Color
2B1C10

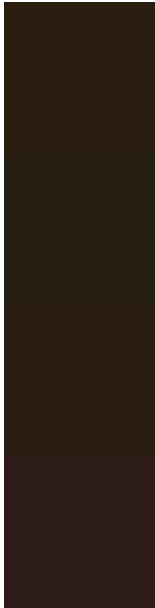
Protanopia
232011

Deuteranopia
271E10



Tritanopia
2C1B1D

Trichromacy



Original Color
2B1C10

Protanomaly
261F11

Deuteranomaly
281D10

Tritanomaly
2C1B18

Monochromacy



Original Color
2B1C10

Achromatopsia
1F1F1F

Achromatomaly
231E1A

CSS Examples

Text

The CSS property to change the color of the text to Hex 2B1C10 is called "color". The color property can be set on classes, ids or directly on the HTML element.

This example shows how text in the color #2B1C10 looks like.

```
.text, #text, p{  
    color:#2B1C10  
}
```

If you want to add a text shadow in that color use the text-shadow property, you can generate a text shadow directly with our [CSS Text Shadow Generator](#).

Here you see how black text with a 4 pixel #2B1C10 colored shadow looks like.

```
.shadow{ text-shadow: 4px 4px 2px #2B1C10
}
```

Border

The CSS property to change the border of an element to Hex 2B1C10 is called "border". The border property can be set on classes, ids or directly on the HTML element.

This example shows the color as border, it can be applied via the CSS property "border" or "border-color".

```
.border, #border, table{ border:4px solid
#2B1C10 }
```

If only the border color should be changed use the property `border-color`.

```
.border{ border-color:#2B1C10 }
```

If you want to add a box shadow in that color use:

Here you see how a box with a 4 pixel #2B1C10 colored shadow looks like.

```
.boxshadow{ -moz-box-shadow:4px 4px 4px  
4px #2B1C10; -webkit-box-shadow:4px 4px  
4px 4px #2B1C10; box-shadow:4px 4px 4px  
4px #2B1C10 }
```

Background

The CSS property to change the background color of an element to Hex 2B1C10 is called "background". The background property can be set on classes, ids or directly on the HTML element.

```
.background, #background, body{  
background:#2B1C10 }
```

If only the background color should be changed can be used:

```
.background{ background-color:#2B1C10 }
```

This example shows the color as background, it is applied via the CSS property "background".

To optimize and compress your CSS code, you can use our [online CSS compressor and optimizer](#) based on csstidy. If you want to create a linear or radial gradient as background or border, check our [CSS Gradient Generator](#).

Hey! You found this booklet interesting? Support Converting Colors with the new Membership Option!

The pro membership hides all ads, plus gives you double the colors in the color bucket, and more awesome pro features!

[Learn more, Memberships starting at \\$2.50/m!](#)

**Follow me
on Twitter!**

@ConvertingColor