

Converting Colors

Hex(2C120D)

Have a look what the booklet for
Hex(2C120D) contains.

Hex(2C120D)	3
<i>Conversions</i>	4
<i>Details</i>	6
<i>Harmonies</i>	11
<i>Previews</i>	23
<i>Color Blindness Simulation</i>	26
<i>CSS Examples</i>	29

Color

Hex(2C120D)

Conversions

Conversions Part 1

Format	Color
Hex	2C120D
RGB	44, 18, 13
RGB Percent	17%, 7%, 5%
CMY	0.8275, 0.9294, 0.9490
CMYK	0.00, 0.59, 0.70, 0.83
HSL	10°, 54%, 11%
HSV	10°, 70%, 17%
XYZ	1.3277, 0.9971, 0.5033
YIQ	25.2040, 17.1010, 3.9570

Conversions

Conversions Part 2

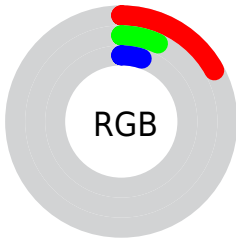
Format	Color
RYB	44, 19, 13
Decimal	2888205
CIELab	8.97, 12.80, 8.26
CIELCh	9, 15.233, 32.850
Yxy	0.9971, 0.4695, 0.3526
Android (android.graphics.Color)	4281078285 (0xFF2C120D)
YUV	25.2040, -6.0166, 16.4841
Hunter-Lab	9.9857, 6.2576, 4.0019

Details

The Hex color **2C120D** is a dark color, and the websafe version is hex **330000**. A complement of this color would be **0D272C**, and the grayscale version is **191919**.

A 20% lighter version of the original color is **5B3D38**, and **000000** is the 20% darker color. If you saturate the color by 10%, you get **2C0E09**, and if you desaturate by 10%, it is **2C1611**.

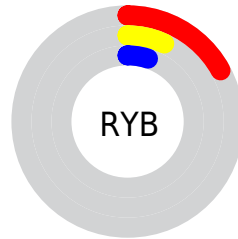
Distribution



Red (17%)

Green (7%)

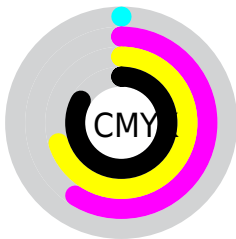
Blue (5%)



Red (17%)

Yellow (7%)

Blue (5%)

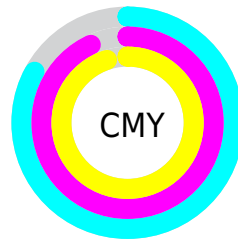


Cyan (0%)

Magenta (59%)

Yellow (70%)

Black (83%)



Cyan (83%)

Magenta (93%)

Yellow (95%)

Brightness & Saturation Gradients

These gradients show how the Hex color 2C120D changes by changing the brightness by 10 percent. The first figure shows a shift by +10% for each color and the second figure -10%.

Similar to the brightness gradients but the following saturation gradients show a change of the Hex color 2C120D by changing the saturation by 10% instead.

 2C120D

 2C120D

 FFF3ED

 130000

 5B3D38

 000000

 74544F

 8F6C67

 A98680

 C5A09A

 E1BBB5

 FED7D0

 2C120D

 2C120D

■ 2C0E09

■ 2C1611

■ 2C0B04

■ 2C1916

■ 2C0700

■ 2C1D1A

■ 2C211F

■ 2C2423

■ 2C2827

■ 2C2C2C

■ 2C3030

■ 2C3335

Harmonies

Analogous

The Analogous color harmony consists of three colors that are next to each other on the color wheel.



2C1119



2C120D



281500

Triad

The Triadic color harmony groups three colors that are evenly spaced from another and form a triangle on the color wheel.



2C120D



051E0F



091A2E

Complementary

The Complementary color scheme is a pair of colors which are on the opposite of each other on the color wheel.



2C120D



0D272C

Split Complementary

Split-complementary colors differ from the complementary color scheme. The scheme consists of three colors, the original color and two neighbors of the complement color.



001D2B



2C120D



001F1A

Square

The Square scheme is like the rectangle color scheme, but the four colors are evenly spaced on the color wheel.



2C120D



161C01



001F24



1B162B

Rectangle

The Rectangle color scheme consists of four colors that form a rectangle on the color wheel.



2C120D



231800



001F24



011B2D

Sweetspot

The Sweet Spot groups the original color and five complimentary colors.



2C120D



382E2C



2C0D27



1C1615



9C9C9C



1C1C1C

Same Dimension

The Same Dimension uses a secret algorithm to generate beautiful new colors.



2C120D



381008



2C210D



171515



570E00



D62300

Inverse Universe

The Inverse Universe completely reimagines the original color for something new.



0D272C



083038



0D182C



151717



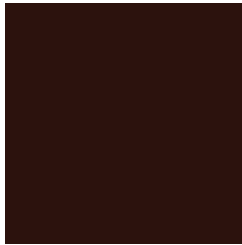
004957



00B4D6

Previews

White Background



This preview shows how the Hex color 2C120D looks on a white background.

Color Contrast Check

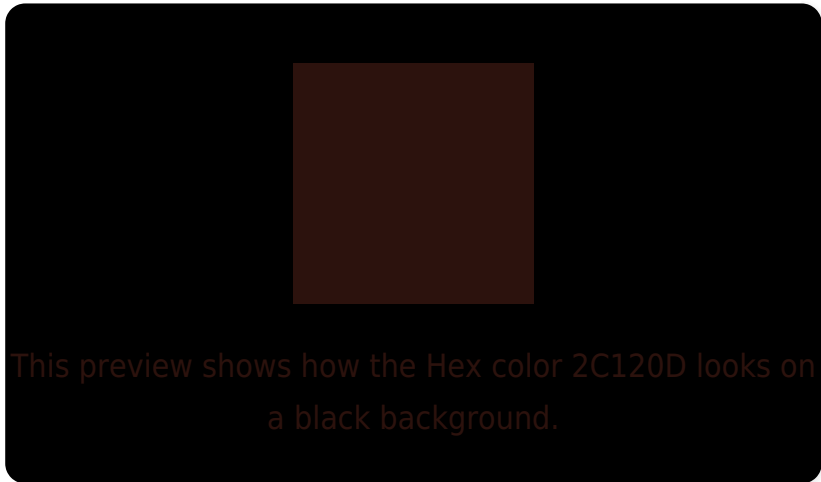
Large Text (above 18pt) WCAG AA ✓ Pass

Any Text WCAG AA ✓ Pass

Large Text (above 18pt) WCAG AAA ✓ Pass

Any Text WCAG AAA ✓ Pass

Black Background



Color Contrast Check

Large Text (above 18pt) WCAG AA × Fail

Any Text WCAG AA × Fail

Large Text (above 18pt) WCAG AAA × Fail

Any Text WCAG AAA × Fail

If you want to check with other color combinations, try the [Color Contrast Checker](#).

Hex 2C120D Background



This preview shows how black text looks on a background with the Hex color 2C120D.



This preview shows how white text looks on a background with the Hex color 2C120D.

Color Blindness Simulation

Color vision deficiency is a very complex topic, and I could not describe the different causes any better than Wikipedia does, so if you want to learn more, you should check out their [article about color blindness](#).

Dichromacy

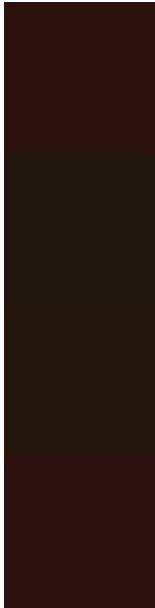


Original Color
2C120D

Protanopia
1D1A10

Deuteranopia
21190C

Trichromacy



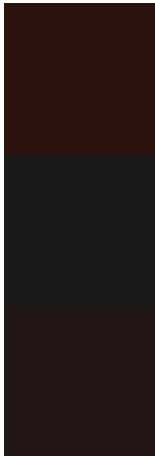
Original Color
2C120D

Protanomaly
22170F

Deuteranomaly
25160C

Tritanomaly
2C1110

Monochromacy



Original Color
2C120D

Achromatopsia
191919

Achromatomaly
201615

CSS Examples

Text

The CSS property to change the color of the text to Hex 2C120D is called "color". The color property can be set on classes, ids or directly on the HTML element.

This example shows how text in the color #2C120D looks like.

```
.text, #text, p{  
    color:#2C120D  
}
```

If you want to add a text shadow in that color use the text-shadow property, you can generate a text shadow directly with our [CSS Text Shadow Generator](#).

Here you see how black text with a 4 pixel #2C120D colored shadow looks like.

```
.shadow{ text-shadow: 4px 4px 2px #2C120D
}
```

Border

The CSS property to change the border of an element to Hex 2C120D is called "border". The border property can be set on classes, ids or directly on the HTML element.

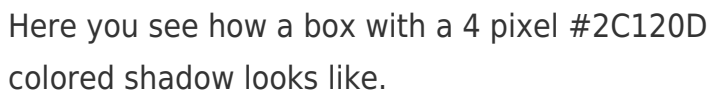
This example shows the color as border, it can be applied via the CSS property "border" or "border-color".

```
.border, #border, table{ border:4px solid
#2C120D }
```

If only the border color should be changed use the property `border-color`.

```
.border{ border-color:#2C120D }
```

If you want to add a box shadow in that color use:



Here you see how a box with a 4 pixel #2C120D colored shadow looks like.

```
.boxshadow{ -moz-box-shadow:4px 4px 4px  
4px #2C120D; -webkit-box-shadow:4px 4px  
4px 4px #2C120D; box-shadow:4px 4px 4px  
4px #2C120D }
```

Background

The CSS property to change the background color of an element to Hex 2C120D is called "background". The background property can be set on classes, ids or directly on the HTML element.

```
.background, #background, body{  
background:#2C120D }
```

If only the background color should be changed can be used:

```
.background{ background-color:#2C120D }
```

This example shows the color as background, it is applied via the CSS property "background".

To optimize and compress your CSS code, you can use our [online CSS compressor and optimizer](#) based on csstidy. If you want to create a linear or radial gradient as background or border, check our [CSS Gradient Generator](#).

Hey! You found this booklet interesting? Support Converting Colors with the new Membership Option!

The pro membership hides all ads, plus gives you double the colors in the color bucket, and more awesome pro features!

[Learn more, Memberships starting at \\$2.50/m!](#)

**Follow me
on Twitter!**

@ConvertingColor